
AS THE WOOD TURNS

February 2013 - Issue number 185 - Minutes of the January 22, 2013

Next Hands On : Saturday, February 16th 10am until noon. *We invite beginning turners to a learning opportunity at the next Hands On. This instruction will be one on one. Spindle or bowl turning techniques will be covered. Please reserve your lathe with David Rice at dergas5@aol.com.*

Visitors : Michael & Eileen Walker from Scituate, and Cliff Colley from Pembroke, all joined MSSW.

Treasury report - Wayne said that the club made a profit of \$400 in 2012. The club currently has \$1853 in the bank. Dues are due. Any dues not paid by April will cause the individual to be removed from the member list.

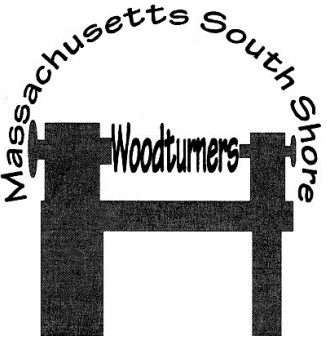
Library report - Charlie Rosen was absent so I read a report he had emailed to me. There were four DVDs out with no cards left in the box by whomever took them out. They include- Vol. 3 Jimmy Clewes, Bowl Basics Lyle Jamison (set of 2 discs), Starting out woodturning by Robert Sorby and Finishing for Woodturners by Chris Stott.

The following books are out with no cards in the box- Fabulous Turned Wood Projects, Turning Boxes by Richard Raffan, Woodturning Techniques and Practical Tips for Woodturners.

In the future when borrowing a book or DVD, please fill out the card in the sleeve and place it and \$2 in the black box. When returning items, find the card in the black box and place it back in the sleeve of the DVD or book you borrowed.

Election of officers - The club entertained nominations for officers for 2013. The existing slate was carried over for another year by vote of the members.

Other business - David Ellsworth tickets are on sale now for April 6th and 7th. It is \$40 for Saturday the 6th and \$80 for Sunday the 7th for the hands on instruction.

2012 MSSW Officers President- Nigel Howe (508) 537-3394 nbhturnings@yahoo.com Vice president Bob Allen (781) 934-9583 trn3345@gmail.com Treasurer Wayne Miller (781)784-7820 wayne33@planetzaide.com Secretary Jeff Keller (781) 878-7310 jkeller@nerej.com Librarian Charles Rosen (781) 848-6589 charlesrosen@comcast.net Web site: http://www.msswt.org/		Next Meeting Tuesday, February 26, 2013 at 7 PM at Hank's dust bowl at 409 Washington St., Abington, MA Refreshmentsby Jim Leatherwood Member Challenge – turn some pens Demonstration – Angelo Iafrate turning Magic balls
---	---	--

Nigel reported that with regard to Hank's bandsaw, we have \$350 donated by a member anonymously toward the purchase of a new one. He proposed that profits from Demo Day January 26th to be added to this fund. Also that Wayne is looking around for a new one for around \$1,000. with a 14 inch throat and a 12 inch depth of cut with a mobile base to facilitate moving it around. This was voted on and carried by members in favor of a purchase and for Wayne to go ahead and buy it.

Nigel announced that Beth Ireland is again planning to tour North and South America to teach woodturning to students and is looking for donations to offset the cost of her travel. Last year the club gave her a \$50 donation. A motion was put forward to increase this to \$100 and carried by vote.

Ken Whiting (who was sick and thus did not attend the meeting) is making a cupboard for under the Powermatic lathe to be used for storage.

Demo Day this Saturday (January 26th) will begin at 8:30 am. Order of demonstrators include- Nigel turning a desk organizer, Bob Scott turning pens, Michael Veno turning a sphere within a box, lunch break, Bob Allen on holding the work on the lathe, Jim Silva making a pillbox and Andy Osborne doing multi axis turning. The last demo ends at 4:00 pm.

Bob Allen said that the club needs new video operators and is looking for any parties interested to contact him.

Wally reminded us that Friday February 1st. from 6-8:00 will be the James Library reception and the beginning of our show there entitled "Tops Tops Tops". Drop off your turned items by the day before, Thursday, January 31st. to the James Library or to Wally. You will need a list of your items with prices (keep a copy for yourself). Each item should have the turners name and sale price on it as well. We also need tops for the show to be available to attendees to try out as a display on Michael Veno's table. It was proposed that they be available for sale for \$5.00 each with proceeds to be donated to the James Library.

Demonstration

Nigel presented a demo on turning a basic bowl. He used a "freshly harvested (wet wood)" Maple blank about 11 inches wide by 3 inches deep.



Nigel displays his preferred facemask with air supply at the start of his demo on turning a basic bowl



Nigel uses an old bowl gouge with a severe fingernail grind to form the tenon on the base of the blank in preparation for mounting on the chuck

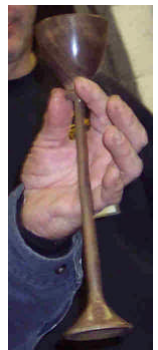
Show & Tell



Michael Veno's "TOP" table for display at the James Library and Maple insert to use on the table to spin tops on by exhibit attendees.



Bob Sutter's English oak sided mirror. He got the idea from an 18th century dressing mirror that he owns.



Bill Dooley showed a natural edge Maple bowl, a Maple bowl w/feather, and a long stemmed Black Walnut cup



Jim Leatherwood showed off a very attractive Box Elder bowl finished with Tung oil



Bob Scott had a smaller bowl turned from the same Box Elder



Ken Lindgren had a piece of Tasmanian Eucalyptus obtained from Angelo and then bleached. This was a remnant from a bowl that happened to be shaped like an elephant's trunk which he made for his fiancée who likes elephants.



Steve Wiseman shows an impressive box he turned and inlaid for his wife for Christmas made of Madrone burl with inlay of a humming bird and flower



Steve Blampied has an impressive wallhanging. The rim is Mahogany which he glued up and turned. The center is Oak burl. In between is cane weaving woven while watching TV.

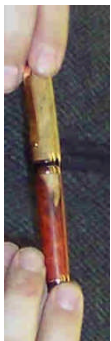


Ian is holding two multi axis turned candlesticks, an assortment of multi-axis turnings . He also showed a box made of Maple & Mahogany scrap, cut to 1/2 x 1/2 square & glued in a checkerboard pattern, with a friction finish – the finial is Wenge

Ian uses 2 methods to turn multi-axis goblets.

(1)- cut 3 small 1/8" tenons on one end of the blank and then mount the blank in a standard chuck skewing the mounting "between" different tenons.

(2) - remove two opposite jaws from chuck and mount a block of wood in the chuck. The block of wood has a hole for the blank's tenon. Move the blank in the block and then shift the block in the chuck as needed to move the turning axis.



John Voloudakis - a pen he turned with a generous portion of sapwood contrasting the darker heartwood (Amboyna burl?), a yarn bowl {the cut out allows the yarn to be removed as the item is knitted}, and an Ash bowl with a narrow base.



Pablo Gazmuri showed two vessels turned from apple in a class with David Ellsworth, a cherry wing bowl turned from a square blank, an uneven winged dish with alternate up and down edges, and a cedar box he turned with texturing on the lid.



Bill George's - Ambrosia Maple bowl finished with Tung oil.



Wally's collection of assorted tops for the James Library show



Dick Smith - a Mahogany bowl



A snowman balanced on a base turned by Jeff, and a Maple burl ikebana (planter) with carved feet made for his wife for Christmas



Weed pot with flowers turned by Bob Courchesne



Ben Natale's Holly vase with stand of ebonized Walnut

Demo day Saturday Jan. 26, 2013

Nigel Howe demonstrated how to turn a Desk Tidy





Wayne Miller had a raffle table set up



Bob Scott reviewed the steps in turning pens



Bob Allen reviewed different methods of holding work on a lathe based on experience and surveying different internet woodturning forums



Mike Veno showed special jaws he made for his chuck to hold the cube while each side is turned, the cube with three sides turned, and the final sphere in a cube



Jim Silva showed how to disassemble a pill box, mount its components inside wood and make an airtight holder for pills, spices, etc.



Andy Osborne used multiple axis to turn a 3 lobe bowl

Coming events and shows

<http://www.totallyturning.com/information.htm> - March 23rd - 24th, 2013 concurrently with the NWA's 22nd Annual Woodworkers Showcase in Saratoga Springs NY.

David Ellsworth's demo at MSSW will be April 6th and 7th 2013.

Items for sale

Club store : We have CA glue 2 oz \$4, 8 oz \$12, 16oz \$21. Accelerator 2 oz spray \$3, 8 oz refill \$5. Debonder 2 oz \$3. Anchor seal \$15/gallon. Hats \$15. Sanding discs, Steve Worcester 2" \$2.50, 3" \$4/10 PAC, Klingspor 2" \$2.25, 3" \$3.25.

stevwsmn@aol.com Steve Wiseman

Most, if not all, of the items listed in the previous newsletters for sale are still available.