

---

# AS THE WOOD TURNS

---

**April 2013 - Issue number 187 - Minutes of the March 26, 2013**

Next Hands On : Saturday, April 20th 10am until noon. *We invite beginning turners to a learning opportunity at the next Hands On. This instruction will be one on one. Spindle or bowl turning techniques will be covered. Please reserve your lathe with David Rice at [dergas5@aol.com](mailto:dergas5@aol.com).*

A big collective GET WELL SOON to librarian Charlie Rosen from all of your friends here at MSSWT !!!

Visitor (and new member) Bill Dodge from Abington. Welcome Bill.

John Murphy's General lathe and woodturning tools are being sold to Bill Leary.

Nigel reported that Craft Supplies has sent the club gift certificates worth \$10 each. They will be added to the wood swap at the close of the meeting.

Wayne gave the treasurer's report. He began by stating that the \$90 insurance check for the club had been sent to AAW. We have \$4620 in the bank, \$2400 of which is earmarked for David Ellsworth April 6<sup>th</sup> and 7<sup>th</sup>. We have 56 paid members leaving about 15 not paid. The club paid \$814 for the new bandsaw. The fee for the South Shore Arts festival in Cohasset Father's day weekend is \$325.

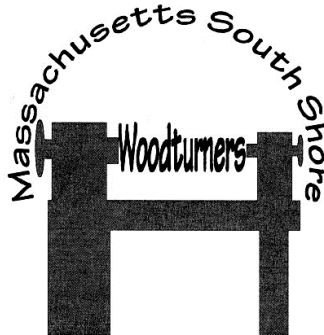
Nigel asked for anyone interested in taking over the job of handing out and collecting name tags for future meetings (now being done by David Rice) to contact him.

The "Across the Grain: Turned and Carved Wood" exhibit begins April 7<sup>th</sup> at the Fuller Craft Museum in Brockton. Bob Sutter has a piece that will be part of the exhibit.

Michael Veno brought up the Rockler Supply demo that he, Nigel and Jim Leatherwood participated in at Rockler's store in Cambridge two weeks ago with regard to his need for a portable work station and tool carrier. Anyone with plans or ideas on how to make one should get in touch with him at [mykv@verizon.net](mailto:mykv@verizon.net) by email or call him at 508-583-5004.

## 2012 MSSW Officers

**President-** Nigel Howe  
(508) 537-3394 [nbhturnings@yahoo.com](mailto:nbhturnings@yahoo.com)  
**Vice president** Bob Allen  
(781) 934-9583 [trn3345@gmail.com](mailto:trn3345@gmail.com)  
**Treasurer** Wayne Miller  
(781)784-7820 [wayne33@planetzaide.com](mailto:wayne33@planetzaide.com)  
**Secretary** Jeff Keller  
(781) 878-7310 [jkeller@nerej.com](mailto:jkeller@nerej.com)  
**Librarian** Charles Rosen  
(781) 848-6589 [charlesrosen@comcast.net](mailto:charlesrosen@comcast.net)  
**Web site:** <http://www.msswt.org/>



## Next Meeting

**Tuesday, April 23, 2013 at 7 PM** at  
Hank's dust bowl at  
409 Washington St., Abington, MA

**Refreshments ....** John Voloudakis

**Member Challenge** – natural edge  
turning (can be small)

**Demonstration** – Bob Sutter  
Photographing your projects

Expanding on the Rockler demonstration, Nigel said that they had two lathes set up in the store windows overlooking the sidewalk and Massachusetts Avenue. They were turning on them with their backs to the outside. People came right in and they asked a lot of questions. The store manager said the event was a huge success.

Wally mentioned that with regard to the James Library exhibit this past February, the exhibit curator, Lisa Flynn has been invited to the April 23<sup>rd</sup>. meeting to address our group for next year's event at the James and her plans for us and also to discuss the craft show they have in December.

Michael Veno brought up the need for a elongated rectangular club sign to use at future shows like the South Shore Arts Festival. The club currently has a square sign made by Mal Partridge that is used but a thinner version could be displayed at the front of the tent entrance along the top for better visibility. Nigel said we will look into it.

Wally mentioned that some years ago there was a manual of sorts photocopied for members explaining the different ways to cut a log to obtain different grain patterns. I will make some copies for distribution at the next Hands On April 20<sup>th</sup>.

**Other business** - David Ellsworth demonstration and "hands-on" is sold out for April 6<sup>th</sup> and 7<sup>th</sup>.

## Demonstration

The evening's demonstration was on tool sharpening.



Nigel began using a slow speed grinder. He used an Ellsworth jig on a Wolverine slide to sharpen a bowl gouge. He stated that it is best to change grinding wheels when you have used an inch of the wheel diameter. The wheels he uses are 80 and 120 grit respectively. Nigel then demonstrated using the "V" shaped adapter for sharpening the skew on the Wolverine.

Included was a comparison of sharpening high speed steel and carbon steel tools. Carbon steel gives off sparks with stars at the end that are less brilliant than those from high speed steel (which also does not give off the stars). Also mentioned was the fact that there are diamond grinding wheels available but these should not be used for tools of carbon steel. Lastly, Nigel demonstrated sharpening a spindle gouge by rotating the cutting end on the wheel while holding it in place at the proper angle.

Bob Allen was next. He had a Sorby belt system that he purchased through Klingspor. He uses it more for his chisels and his planes because they can be sharpened at the same angle. The Sorby can have the belt sander portion raised up or lowered down to achieve whatever angle you need and the platform is adjustable. Bob used a 400 grit belt but 60, 80, 120, 220, 320 and 400 grit are available in packs for \$15 from Klingspor.

Bob also recommended using a face mask with this system. Also do not mix wood and metal using the same belt as the metal particles will mark up your wood projects and become imbedded beneath the surface.





Ian demonstrated sharpening using various jigs with the grinder that he had made from plywood at a fraction of the cost of a Wolverine system. He purchased square steel lengths from Home Depot which he cut to size for use to hold the jigs while sharpening on the grinding wheels. He also showed us how to make a jig for measuring the angle for setting the distance of the bracket from the wheel by holding the front of the tool and the jig.

Part two of his demonstration featured Ian using a belt sander purchased for about \$60 from Harbor Freight with some modifications. Modifications included removing the belt and twisting it into a figure 8 then putting it back to make the belt run backwards away from the tool you are sharpening. The tool to be sharpened was secured by a v-block of wood held by a set of screws.

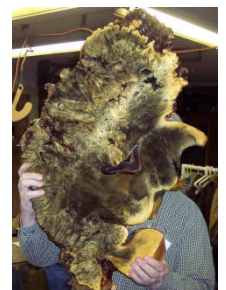


Last but not least, David Rice showed us sharpening by using a Tormek system from Sweden. It comes with a book of instructions on angles and setups for getting the tool set to the proper angle for sharpening. It features a huge grinding wheel which is water cooled for sharpening and runs at a slow speed. An interesting feature is that the wheel's grit can be changed. On the opposite side is a leather wheel for honing. You use a diamond point to dress the wheel.

## Show and Tell



Paul O'Neil started Show & Tell w/a Walnut bowl finished w/Mahoney's Oil Finish



Steve Wiseman has two small bowls turned from Buckeye and a large (3 foot x 2 foot) slab of Buckeye for a coffee table which sits on an Ambrosia Maple base.





Skip Brown showed us a cedar box he colored with rouge polishing compound.



Bob Sutter showed us an outstanding Silver Bell bowl he finished with three coats of oil & one of wax. He recommends letting each application of oil set for a half hour before wiping off.



Wally had a natural edge pear turning in this photo and a two year old natural edge bowl shown here which has darkened.



Bill Dooley turned a Spalted Maple box and a box from Cedar or Juniper



Ben Natale has a weed pot from Spalted Maple and a Maple bowl



Ben has a small oak bowl and a Catalpa Tea Light holder



Ben shows us another weed pot of Spalted Maple and a Spalted Maple bowl.



Joe Feeny showed a Black Walnut crotch bowl with wings.



Nigel showed off an Ash bowl which he had dyed blue using Trans Tint with alcohol then finished with Tung oil and wax.



Jeff Keller – a returned Spalted Maple box w/a chip on the upper rim and some marks that needed to be removed. It is finished with wipe on poly.



Bob Allen had these magnetic pens (featuring magnetic caps). Pictured is a rollerball turned from Ebony, one from Zebrawood and a stylus from Zebrawood.

### Coming events and shows

May 4<sup>th</sup> & 5<sup>th</sup>- Earth Day at the South Shore Natural Science Center on Jacobs Lane, Norwell. See Jeff for more information.

June 14-16- South Shore Arts Festival, Cohasset on the common. We will sell and demonstrate. Friday afternoon, all day Saturday and Sunday (Father's Day). See Nigel or Bob Allen with questions.

August 17<sup>th</sup>- Brockton Arts & Craft Show we will turn tops and sell. See Michael Veno for more information.

### Items for sale

**Club store :** We have CA glue 2 oz \$4, 8 oz \$12, 16oz \$21. Accelerator 2 oz spray \$3, 8 oz refill \$5. Debonder 2 oz \$3. Anchor seal \$15/gallon. Hats \$15. Sanding discs, Steve Worchester 2" \$2.50, 3" \$4/10 PAC, Klingspor 2" \$2.25, 3" \$3.25.

**stevwsmn@aol.com** Steve Wiseman

Most, if not all, of the items listed in the previous newsletters for sale are still available.