

AS THE WOOD TURNS

June 2014 - Issue number 199 -

Next Hands On was on Saturday, June 7, 10am until noon at Hank's Dust Bowl. We invite beginning turners to a learning opportunity at the next Hands On. This instruction will be one on one. Spindle or bowl turning techniques will be covered. Please reserve your lathe with David Rice at dergas5@aol.com.

News: Our club took second prize at the AAW Expo for website design thanks to Eileen's hard work!

The Cohasset "South Shore Arts Festival" took place, June 13, 14, 15 on Father's day weekend. While it rained sometimes heavily all day Friday, we still had three sales. Saturday was cloudy and sunny and we had 37 sales as a result. Things almost flew off the shelves from the 10 o'clock start until around 5 when they slowed for dinner time until 7 when the exhibit closed for the day. Sunday, Father's day was a beautiful day and the crowds returned in full force. We didn't match Saturday (not much could) but it was busy and steady nonetheless. A special Congrats to Steve Wiseman! Steve was on a mission the whole show and as Eileen was ill from her trip, it was good that he could be. If there was a sale to be made, Steve was there. If someone had a question or needed help with an item, Steve was front and center. This was a long demanding show and it was worth it.



L-R : Exhibitors: Bob Monaghan, Ian Manley, Ken Whiting, Jon Shooshanian, Steve Wiseman,, Bill Dooley & Jeff Keller.
Not pictured Nigel Howe, Jim Flannery, Lenny Mandeville, Charlie Rosen, Wally Kemp, Ken Lindgren, Andy Osborne. Bob Allen, Ben Natale, and Brooks Holmes

2013 MSSW Officers

President- Nigel Howe
(508) 837-3394 nbhturnings@yahoo.com
Vice president Bob Allen
(781) 934-9583 trn3345@gmail.com
Treasurer Steve Wiseman
(508)-285-9394 stevwsmn@aol.com
Secretary Jeff Keller
(781) 878-7310 jkeller@nerej.com
Librarian Charles Rosen
(781) 848-6589 charlesrosen1@comcast.net
Web site: <http://www.msswt.org/>
Webmaster : Eileen Walker



Next Meeting

Tuesday, June 24, 2014 - at Hank's dust bowl at 409 Washington St., Abington, MA

Refreshments – Charlie Rosen

Member Challenge – make a natural edge bowl, preferably with the bark on.

Demonstration -- Tips & Tricks – members will participate in a discussion on shortcuts and techniques used that help in turning various projects.

More pictures from the South Shore Festival:



Minutes of the May 27, 2014 meeting

Guest: Joe Manning (who joined the club) Welcome Joe!

We currently have 65 members who are paid up for 2014

Steve said that the club has \$2538 on account. New items in the store include extended glue tips, replacement tops for CA glue bottles, rubberized CA glue as well as new T and collared shirts in navy, white and grey colors. See Steve if you would like to buy one.

Nigel announced that Dave Rice went on scholarship to the John C. Campbell School and that he would be addressing the club after the break.

The summer party will be held at Nigel's house on Saturday, July 12th. At 9 Wallace Street, Berkeley, Massachusetts beginning at 10 am and will go on until the last person leaves. This will be in place of the club "Hands On" session. There will however be a regular July meeting on July 22nd. (the fourth Tuesday of the month) at Hank's Dust Bowl.

Andy Osborne still has a couple of Barbara Dill books. If you paid for one and didn't receive it, see him.

Wally announced that June 21st, is Hanover Day. He will be demonstrating on the lathe. A motion was made and approved by the members as a club event.

Bernie announced that both the Cape Cod and Gateway clubs have organized a trip to Bad Dog Burl on May 31st. Members from MSSWT are invited to meet there and as a group we would receive a discount on items purchased.

Mike Veno announced that Brockton will be holding it's Summerfest event again on Saturday, August 16th from 10-4:00 pm at the Brockton High School. We will demonstrate turning and have a table to display and sell items there. We will need at least four participants. See Mike for details

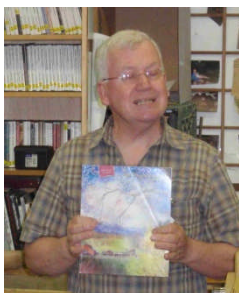
The Hull Arts Association has put two stores together for artists to exhibit and sell on Thursday, Friday, Saturday and Sunday. Cost is \$35 per month. You keep everything you sell.

The club is signed up for, and needs to vote at the next meeting, to participate in the Oktoberfest show September 27-28 Saturday and Sunday at the House of Prayer Lutheran church located at 916 Main Street in Hingham on Rte 228. We will have a display table for their craft show (no demo).

The discussion of proposed changes to our by-laws has been postponed to a future meeting.

Demonstration

David Rice trip to John C. Campbell School- for a course on Natural Edge Bowls given by Tom Boley



“There were ten of us and I was the only Yankee. They’re still fighting the War Between the States down there. The school began in the 1920s by a minister whose philosophy was “Learning to Turn Without Criticism”. Any time of the week there were 15-20 classes going on. A typical day began with a walk in the morning. You lined up outside, grabbed a drink, stood behind a chair and then sat down for breakfast. Most everyone comingled except for the blacksmith guys who kept to themselves. There was no TV or radio and cell phone reception was limited.

They had 11 lathes with a cabinet behind each one and all the tools you needed. The gentleman who ran the course was a former NCIS agent from Washington D.C. He was so organized that he kept everyone covered. “Barking Bowls” was my course.

He had made large size gouges and skewers for use in demonstrating the various cuts.

We turned four different bowls- a standard, square, cut on the bias, and a log.



It was interesting to note that even though there were three people in the class who had never turned before, they didn’t slow the class down.”

From the class notes by Tom Boley” : “Bark”ing Bowls

{Red Oak hollow Lathe Works, Purcellville, VA www.redoakhollow.com 540-338-1718 tboly@erols.com}

Making natural edge bowls is a delight which many woodturners have discovered. Here are four designs you may wish to try, from the simple to the complex. Basically, use a piece of fresh-cut wood with the bark on.

Wood cut in winter will hold its bark much better than wood cut in the spring and summer.

Mount the wood, turn the outside first and put a tenon on the bottom.

Soak the outside edge of the bark with thin super glue.

Chuck up the tenon and turn the inside, leaving ~ as thick as 1/10 of the diameter of the bowl.

Superglue the inside edge of the bark.

Mark it as to type of wood and date of roughing ~ out, then wax-seal with Anchorseal, or other similar product,

Don't wax the face of the bark-just the exposed sides.

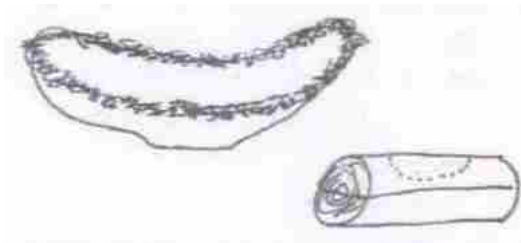
Set it in a place where it can dry for several months, then re-turn it to round off the tenon and outside.

Sand thoroughly.

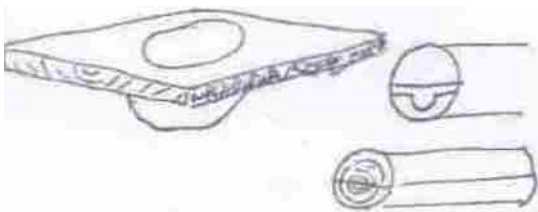
Chuck it in the tenon, re-turn the inside to final thickness and sand.

Remember that the bark may look more interesting if it is thicker than you might normally make a bowl of that size.

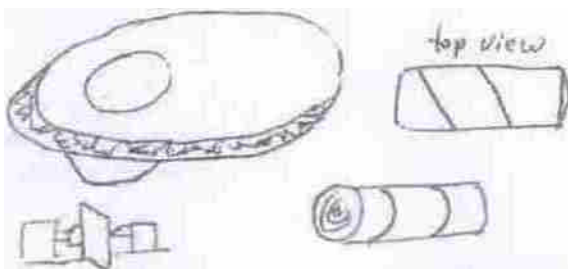
Here are four different shapes of natural edge bowls for you to try.



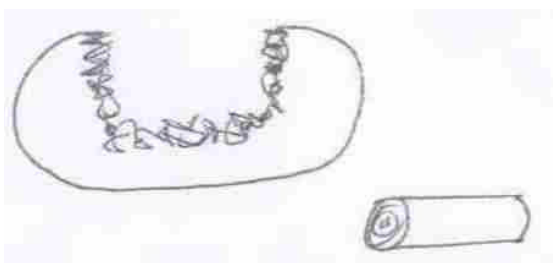
Standard – this is the basic natural edge bowl turned from a half log with the bottom toward the center of the log and the bark making a “roller coaster” around the edge.



Square – this bowl is just the opposite, having the bottom of the bowl toward the outside of the log & the top of the bowl being the section just outside the center of the log. The bark only appears on two edges.



Bias – I heard this called “turning on the bias” some years ago & can’t recall who said it. Crosscut the log at about a 45 degree angle, or so, & then mount it so the two cuts are perpendicular to the line of the lathe. The point is to offset the head and tailstocks so the bowl will be offset within the top flare.



Log – cut a small log, no more than 6” in diam., about a 1/3 longer than wide. Mount it on the center of the two sides so it spins end for end. Round the ends & treat the tail stock side as the bottom, working a tenon into that side. Chuck it & treat it as a hollowform, hollowing out the inside so the inside becomes wider than the outside on the sides only.



Note – David was one of 25 people chosen last year by the AAW from a list submitted by AAW chapters. There were 12 people who won scholarships to the John C. Campbell Folk School and 13 people who won scholarships to the Arrowmont School of Arts and Crafts. The AAW will be doing a similar drawing later this year for a future scholarship. You must be an AAW member to be considered. Check out <https://www.folkschool.org/JCCFS2014/flipviewerexpress.html> for a listing of 2014 classes http://www.arrowmont.org/images/arrowmont/pdfs/arrowmont_2014_web.pdf for a listing of 2014 workshops One can expect similar classes in 2015.

Show and Tell



Wally is holding a large sphere he turned from Pear root. *



Larry McInnis has a pen mounted on a snake stand. Pen has a bullet front end resembling a 30 30 shell and a "lock & load" lever to shift the nib into place to write with. Currently a hot item at shows. He also showed three Dymondwood pens in cases



** It checked & went out of round causing an inconsistent thickness in subsequent turning. Wally filled the checks with black colored epoxy and secured to the lathe by a sandwich chuck after it had been turned between centers*



Andy's natural edge cherry crotch. It had grey sapwood enhanced by green and blue dye separated by burn lines to keep the dye from running. He indexed it for equal spacing and finished the piece with Minwax Urethane Oil.



Ian has a lidded box turned from Padauk and Walnut. He finished it with two coats of Woodturners Finish & buffed it with wax



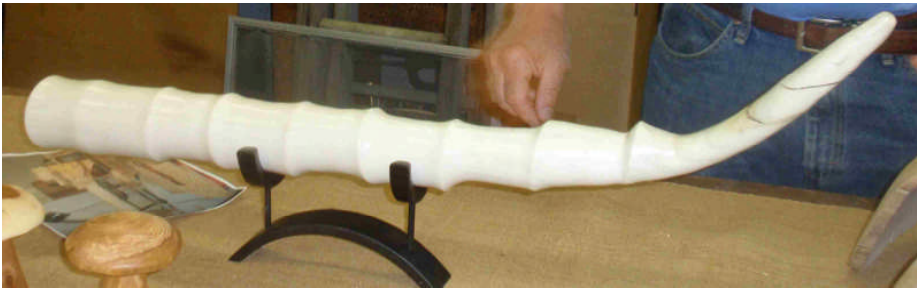
Pablo showed us 2 Apple wood mushrooms turned off center with their bottoms sanded on an angle to make them sit lopsided, two boxes turned from a cube at Jim Leatherwood's shop, and a burl turned and mounted on an Ebony base with a finial. It is a hollowform and finished with boiled linseed oil with shellac and oil.



Steve showed a Dymondwood pen, and a nest of bowls turned from Sassafras that he finished with Tung oil. He used the McNaughton Coring System for this project.



Bob Courchesne has a maple bowl that he turned on his one hundred year old wooden lathe. Nice job Bob!



Ken showed us a tusk turned multi axis style on the lathe. He hand carved the curved end. It is bleached Maple. He finished it with Armor Seal from Woodcraft. It's stand was constructed from a bracelet cut in half with the diameter matching the tusk diameter. The bottom ring is from an old bowl with a couple of dowels for support. The other photo shows how it was balanced during turning



Glen made this hollow form he turned from Oak. He finished it with Mylands sealer and finish.



Nigel is holding a bowl turned by Warren Carpenter showing two separate centers, and a second bowl from Warren Carpenter.



Crotch design. Here Nigel had a three foot long piece with a part that broke off. He found that he had turned it to different thicknesses due to the flexing of the wood. The centrifugal force in turning caused the "ears" to move in and twist at an angle. Nigel then took a small piece, turned a donut base, mounted a winged piece to it with hot melt glue and was able to turn the piece

evenly. The donut was the answer.

The large piece is 33" end to end with a 17" dia bowl in the middle - the thickness of the wings varies about 3/16". The middle photo is the small ring which he hot glued onto the back of a smaller crotch bowl (about 12" end to end) so as to stiffen the sides during turning.

The photo on the right is the smaller crotch bowl he coated with Libron oil and then Libron wax after the oil hazes.

Wood raffle was held with lots of Oak from Sidney



Safety Suggestions – the club is still looking for your safety suggestions. Winner for this year will be chosen at our year end potluck and receive a gift certificate for \$30.00 .

May 17 hands on session



Dave Rice watches as Ava Rothwell hollows a small box.



Bill Dooley and Tom Boland



Jeff Keller and Sidney Katz



Steve Wiseman and Gil Blais



Jeff Keller and Peter Soltz



Bob Courchesne with Ian

Items For sale at the Club store : – contact stevwsmn@aol.com Steve Wiseman

CA glue 2 oz \$4, 8 oz \$12, 16oz \$21. Accelerator 2 oz spray \$3, 8 oz refill \$5. Debonder 2 oz \$3. Anchor seal \$15/gallon, \$4/quart, Hats \$15, and Sanding discs, Steve Worcester 2" \$2.50, 3" \$4/10 PAC, Klingspor 2" \$2.25, 3" \$3.25. We have Club hats, logo on the front "hanks friend" on the back, Blue or Khaki;. also : Tee shirts and Polo shirts. Blue, Grey and White, club logo on left chest, "Hanks friend" on sleeve cuff.



Assorted Maple? tool handle blanks



Pen blanks



Free ? sandpaper

Price reduced to \$300, or best offer : The “Blue Mule” (lathe) in Abington, MA built for large heavy turnings (Hank Cahill used a Model T axle for a turning tool with this one). The lathe has two Ford truck transmissions (16 speeds) mated to a 3 HP, 3 phase 230/460 volt motor. – The Mule is connected to power and runs when turned on. *A single phase to 3 phase power converters is available from Surplus Center and Ebay stores if you do not have 3 phase power but is not supplied with lathe.*



Back of lathe showing disk to attach balancing weights



Front of lathe showing tool rest support beam and headstock threaded faceplate mount



Looking down at the 2 transmissions

Dimensions 24" wide by 41" high x 41" long - metal construction with components fastened within a steel angle frame. The shaft center is about 42" off the floor – can turn a six foot object using an external floor mounted tool rest (*not supplied*). Space between the spindle shaft center and the tool rest can be as much as 32". Spindle shaft is 2" steel with threaded fitting that seems to be 1"+ with a fine thread for a 6" steel face plate (supplied). At the opposite end of the spindle shaft is a large plate with provision for mounting compensating weights for unbalanced turnings (*not supplied*).

Hung below the plate that holds the motor and truck transmissions is a 10-12 " steel box containing beach sand. Motor is 3 HP 230/460 volts 3 phase. The motor is coupled by 2 belts to the first transmission. 2 Belts connect the 2 transmissions & 1 belt is missing, 2 belts connect the 2nd truck transmission to the spindle. Belts are loose and need tensioning/replacement

Tool rest is a 6"x6" Pine beam suspended by two steel clamps. An Oak beam would be stiffer than Pine. In use, Hank backed up the steel tool rest with a floor support.

If you have any items sitting around that you no longer want, why not draw up a list and prepare some pictures that could be used in a forthcoming newsletter and on the club website? - items listed for sale in the newsletter or website will be reviewed after three months, or so, to determine if they should be removed on continued.