

# AS THE WOOD TURNS

**February 2015 - Issue number 206** Minutes of the February 24<sup>th</sup> meeting.

Next "hands-on" is Saturday March 21<sup>st</sup>, from 10-12 noon at Hank's Dust Bowl. *We invite beginning turners to a learning opportunity at the Hands On for one on one instruction. Spindle or bowl turning techniques will be covered. Please reserve your lathe with David Rice at [dergas5@aol.com](mailto:dergas5@aol.com)*

Bob Scott and I attended the opening day of "Audacious: The Fine Art of Wood" at the Peabody Essex Museum this past Saturday, February 21st. In addition to the exhibit were demonstrations in the main hallway of the museum from 1-2:30 in the afternoon followed by a discussion in the adjacent auditorium.



Pictured (l-r) are Bien Pho, Stuart Mortimer, Ron Gerton and discussion leader Dean Lahikainen of the Peabody Essex Museum.



Some examples of Stuart Mortimer's turnings

Visitors- Ron & Carl Albro of Bridgewater who joined.

**2015 Dues are Due now** and can be paid by going online and using PayPal, or just bringing the \$40 fee payment to the next meeting and seeing Steve. Steve reported \$1937. on account. He noted that the club store has been restocked and now has a wide assortment of supplies available to members.

Nigel introduced Tim Rix as our new secretary and Dave Rice as our new vice president. Bob Monaghan is the new librarian. He is interested in hearing from members regarding suggestions or other input on our library.

Eileen Walker has resumed her duties as webmaster for the club website as well.

## MSSW Officers

**President-** Nigel Howe  
(508) 828-8463 [nbhturnings@yahoo.com](mailto:nbhturnings@yahoo.com)  
**Vice president** Dave Rice  
(508)-668-3064 [dergas5@aol.com](mailto:dergas5@aol.com)  
**Treasurer** Steve Wiseman  
(508)-285-9394 [stevwsmn@aol.com](mailto:stevwsmn@aol.com)  
**Secretary** Tim Rix  
(617)-259-5618 [rix.tim@gmail.com](mailto:rix.tim@gmail.com)  
**Librarian** Bob Monaghan  
(781)-910-2191 [lathefriend08@yahoo.com](mailto:lathefriend08@yahoo.com)  
**Webmaster** Eileen Walker  
(781)-545-1978 [eileenturnswood@gmail.com](mailto:eileenturnswood@gmail.com)



**Next Meeting - Thursday, March 24, 2015** - at Hank's dust bowl at 409 Washington St., Abington, MA at 7 pm

**Refreshments** – by Ed Kurkoski

**Member Challenge** – make a segmented ring or bowl and/or turn a "twist" ala Stuart Mortimer

**Demo** - will be presented by Jim Leatherwood on dyeing wood

Lenny Mandeville reported that the club is missing the video by Alan Lacer on "Making Tools". Dave Rice said that the club is also missing Malcolm Tibbets "Volume 1 #68". If you have either of these, please let Bob know.

Nigel reported that he and Dave Rice attended a meeting at the Fuller Craft Museum in Brockton. Nigel said the museum would like to feature our work in an exhibit of member pieces beginning next February of 2016. It will be a juried exhibit which means you will have your work looked at in advance by a representative first. They will hold a reception March 13th after the exhibit is up and in place. We will have almost a third of their space available. The exhibit will run 2-3 months. Members can submit a photo and bio of themselves to be included in a book with the exhibit. It is not mandatory however. Items do not have to be for sale but can be sold. If sold we should donate a portion of the sale price to the museum.

Ken Lindgren announced that items placed in their gift shop are sold at a 50% commission.

Nigel suggested that members can make videos of their work for the exhibit to have on display. The club is looking for someone to help in the filming of same. There is no limit to the number of items we can submit. Dave mentioned that they have pedestals available for display pieces and that the museum wants to be accommodating. He said they would also like themes.

Nigel added that we could also set up and do live demos as part of the exhibit at certain times such as on weekends, "-so sharpen your tools"

We as a club have been accepted for the South Shore Craft Festival Father's Day weekend in Cohasset June 19th through the 21st. We need to find out if we will have the same location as last year for our booths.

**Demo Day is Saturday April 11th** at Hank's Dust Bowl. There will be three demonstrators in the morning, three in the afternoon. It is \$30 per person with lunch included. Nigel is looking for two more turners for this so contact him if you are interested. The purpose is to raise money to purchase new lathes to replace some of our tired ones. There will also be a raffle at the event.

Speaking of a raffle, there are still tickets available for the AAW Symposium priced at \$10 each. The lucky winner will receive \$325 for admission to the event whether he (or she) decides to attend or not.



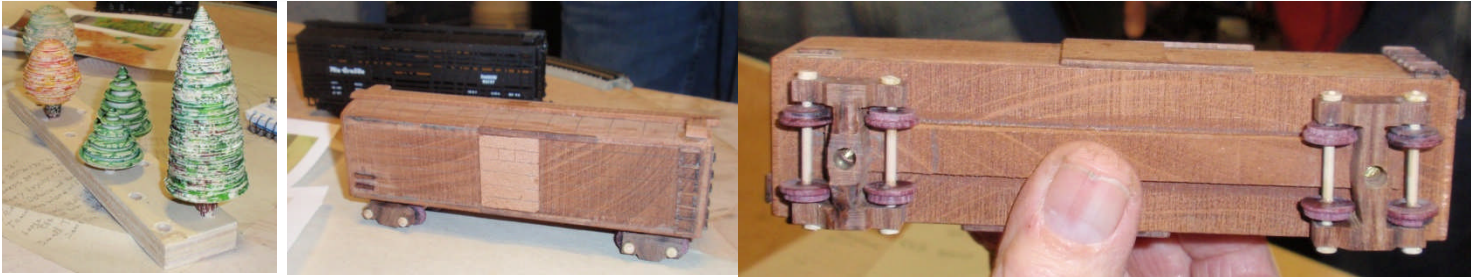
The winning raffle ticket will be drawn at the April meeting. Raffle tickets are available for \$10 each and you can buy as many as you want. 13 have been sold as of the meeting. The winner will get a check for \$325 which will equal the registration for the symposium in Pittsburgh, Pennsylvania. The winner of the raffle is not obliged to go to the Symposium. See Dave Rice for tickets.

Lenny Mandeville mentioned that the club needs a new (and bigger) coffeepot. The motion was voted on and carried by members so it should be in place for the next meeting.

Sid Katz mentioned that the Eighth New Hampshire Woodturning Symposium at the Pinkerton Academy in Derry, NH is on May 9th. You need to make reservations in advance to attend. Cost is \$65 per person which includes lunch. Go to their website at [www.gnhw.org](http://www.gnhw.org) to register and find out more.

**Club challenge project** for the AAW Symposium in Pittsburgh June 25th through the 28<sup>th</sup>. There was a project meeting Sunday, March 1<sup>st</sup>, at Bob Monaghan's shop in Rockland with about ten guys attending: Wayne Miller, Steve Wiseman, Bob Allen, Ken Whiting, Carl Albro (new member), Jim Flannery, Pablo Gazmuri, Andy Osborne, and of course Bob Monaghan and yours truly. It was decided that the HO scale would work for the train. Steve said he will make the engine for the train and also the mechanism for it to be cranked by viewers. The track will be part of the base and will be turned by Nigel. It will all be stationary since the handle will provide the movement. Andy had a sign-up sheet for attendees to write down items they would make. He said we need a lot of supplies to be on the train or close by. We also need landscaping.

You can still contact Andy to participate (by email at [abeadeddragon@yahoo.com](mailto:abeadeddragon@yahoo.com))



Jim Flannery made a few trees and an HO scale boxcar

**Safety Suggestions** – the club is still looking for your safety suggestions. Winner for this year will be chosen at our year end potluck and receive a gift certificate for \$30.00

## Demonstration

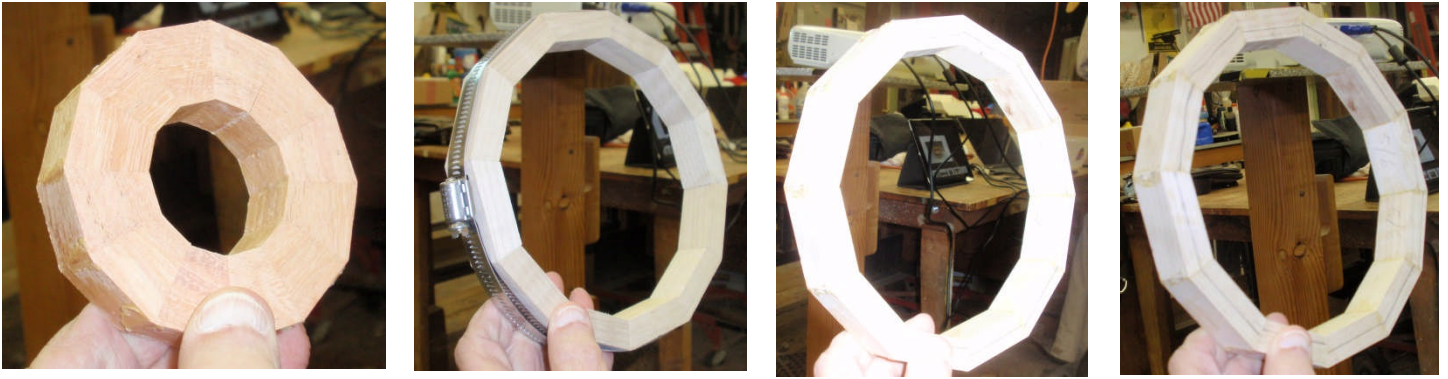
Wayne Miller on Segmenting



Wayne began by saying that segmented turning is a bit like pottery in that you have a design in mind at the beginning. He mentioned that in setting your pieces up that the grain needs to be oriented all in the same direction or it will not stay together.

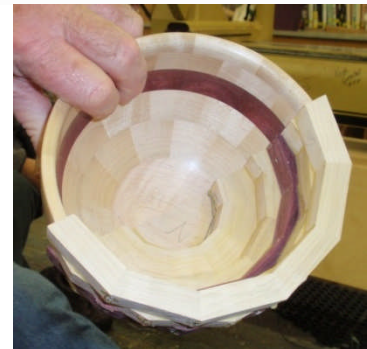
You can begin by taking some graph paper and sketching a design of your piece on it. When it comes to cutting segments, you need to ask yourself how many do you need to cut and why. Since segments are laid out as rings, decide how many segments for each ring and determine their dimensions by looking at the circumference of a circle. Wayne uses the formula  $7 \text{ times } 3.14 (\pi) \text{ equals } 21.98 \text{ inches}$ . Since 12 segments is a good number, Wayne then takes 21.98 and divides it by 12 which equals 1.8 inches each.





When you cut them, begin by cutting the widest board first to minimize waste. Segments should be dry fitted together first and no daylight should be visible in the ring (which should be round). Glue the segments together using a liberal amount of glue.(Wayne likes Titebond #1) The joints need to be slippery. After a short time the ring can be stabilized by making it flat as well as parallel. This is achieved by turning it on the lathe and then sanding them. Wayne recommends using hot melt glue to hold a ring to a glue block mounted on the lathe for this procedure. He discussed using a floating (non glued) base for his bowls.

Wayne concluded by showing us finished rings glued and partially turned in a half finished half unfinished sample



He stated that if anyone would like to learn more in a one on one situation that to just call him and make arrangements to get together. Ian and Nigel also are available for anyone interested in one on one segmenting

**Challenge for this meeting was to make a segmented ring or bowl.**



Charlie McCarthy, holds a segmented Poplar bowl made by gluing segmented pieces together & turning it on his lathe,



Ed Kurkoski showed two segmented bowls. The first segmented bowl (of Poplar) was turned from segments that Ian had extra in his shop. His second bowl (the one with the smaller base) was assembled from segments he cut after making a "wedgie" sled that Ian had shown us. Nice job Ed!



**2 Challenges for next month –  
make a segmented ring or bowl and/or turn a twist ala Stuart Mortimer**

<http://carolinamountainwoodturners.org/articles/472> Stuart Mortimer demonstrated making twist at the North Carolina Woodturners meeting in Sept. 2013

[http://turnedtreasuresllc.com/wstl2/wp-content/uploads/Newsletters/Newsletter\\_2015-02-01.pdf](http://turnedtreasuresllc.com/wstl2/wp-content/uploads/Newsletters/Newsletter_2015-02-01.pdf) Walt Ahlgrim demonstrated twist turning at the St. Louis Woodturners February 2015 meeting

and <http://www.finewoodworking.com/how-to/video/learn-to-turn-barley-twist-candlesticks.aspx> by Ernie Conover



## Show and Tell



Maple burl handle on a Swiss Army knife installed by Charlie McCarthy & the same Swiss Army knife & a matching ballpoint pen made as a set.



Ed Kurkoski turned this Ash bowl.



Ed Kurkoski also showed two bowls turned from Apple and a Maple bowl

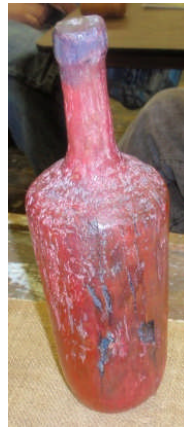


Bracelets with stainless steel inner rings by Wayne Miller. Wayne used segmentation on the acrylic outer parts. Nice job!





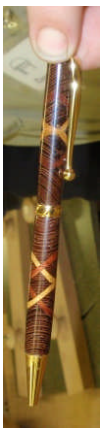
Andy has a Birch hollowform with six Indian figures giving the illusion of movement which he first drew onto the surface and then burned the outline of each image before applying aniline dye. The burning helps to keep the dye from running.



Here we see Ken Lindgren's wine bottle and stand which he turned from a Yew root and then dyed.



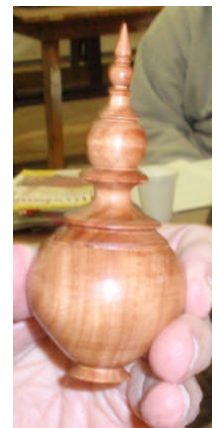
Steve Wiseman holds a bowl turned from some Dedham Maple which he then dyed blue. He also showed a "Glenwood" Hickory bowl, and finally, in the center of the Glenwood bowl is a small dollhouse size bowl turned from a leftover scrap of the same wood.



Dan Manley holds a pen turned from left over pieces of scrap glued up Wenge, Yellowheart, and Monkey wood from Ian's shop.

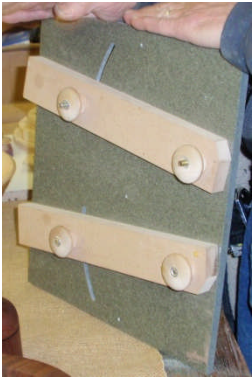


Paul has a Black Walnut box and bowl he recently turned from what must be a large stash of Black Walnut.

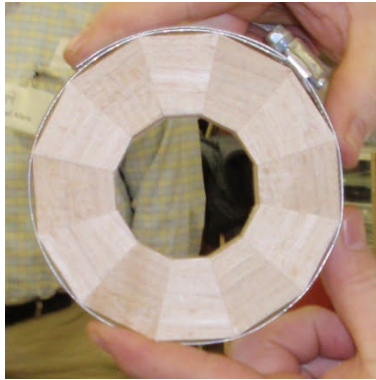


Sid is holding a small finial box he turned from Cebil(?) wood with a spindle gouge (aka Patagonian Rosewood), finished with Mahoney's Oil.





Ian showed us two different sleds he made to cut segments with. The one on the left has two arms so that you don't need a designated jig for every segment. With the jig on the right you can use the first slide for 2 inch rings and you can cut up to 10 inches between the two arms.



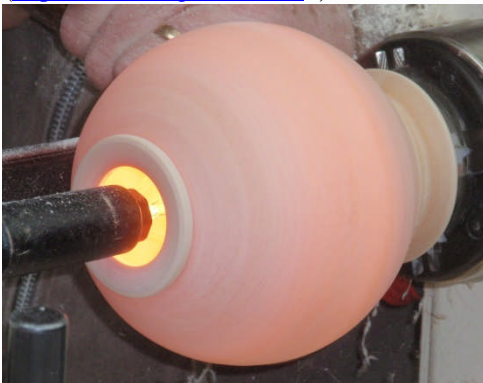
Tim holds a segmented ring held together with a set of radiator hose clamps cut on his table saw and then assembled. He also showed us a cake plate he turned from Spanish Cedar.



Nigel has an end grain hollow form from Ambrosia Maple which he kept for two years in a black plastic bag to promote spaling. He finished it with lacquer, didn't like it and in removing the lacquer got water on the wood which then cracked. But when it dried, the crack closed back up. He also showed a similar piece turned from the same wood showing the crotch

### Here are some photos from the Stuart Mortimer demonstration.

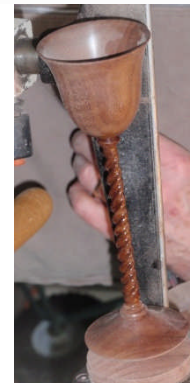
As mentioned in the beginning of the newsletter, there were demonstrations by Binh Pho (<http://www.binhpho.com/gallery.html> ), Stuart Mortimer (<http://stuartmortimer.s411.sureserver.com/> ), and Ron Gerton (<http://www.rongerton.com/> ) at the Peabody Essex Museum. Each of their websites is well worth exploring.



Pictured is a hollow form in progress from Stuart Mortimer's demo Saturday, February 21st. at the Peabody Essex Museum. Here we see that he has inserted a light which he has mounted on the tailstock into the opening of the hollow form to see how evenly the material has been removed



The finished product.



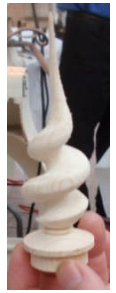
Here we see the finished long stem goblet that Stuart turned from a Walnut cylinder and then carved a twist pattern before finishing it with lacquer



Stuart showed us a triple twist turning. Here is the beginning part marked out while mounted on the lathe.



Work in progress as Stuart removes material from the twist.



The finished twist

### Upcoming Events -

**Peabody Essex Museum** – On view February 21, 2015 to June 21, 2015 “**Audacious: The Fine Art of Wood from the Montalto Bohlen Collection**

The "**Totally Turning 2015**" craft show will again take place Saturday & Sunday March 28th and 29th in Saratoga Springs, New York at the Saratoga Hilton Hotel. It will be held concurrently with the Annual Woodworkers Showcase. Included are several demonstrators, an instant gallery where you can display your items and have them critiqued and a trade show with items for sale. You can visit their website and download registration forms at [www.totallyturning.com](http://www.totallyturning.com).

**Demo Day** is scheduled for April 11<sup>th</sup>. It will be the same format as the last two with three members demonstrating in the morning and three more demonstrating in the afternoon. The event is a club fundraiser to replace our ageing mini-lathes. It is \$30. for the day with lunch included. Nigel still is looking for a couple of volunteer turners. Contact him if interested please.

**Earth Day** - Sunday, May 3rd. 11 – 4 pm at the South Shore Natural Science Center, Norwell. We will turn tops and have items for sale. Questions? Call Jeff at 781-878-4540 or 781-878-7310.

**Guild of New Hampshire Woodworkers** is holding its 8<sup>th</sup> Woodturning Symposium on May 9<sup>th</sup>, 2015 at the Pinkerton Academy in Derry, New Hampshire. <http://www.gnhw.org/> has some initial information about the upcoming Symposium.

**South Shore Craft Festival Father's Day** weekend in Cohasset June 19th through the 21st.

**AAW 2015 Symposium** is scheduled for June 25-28 in Pittsburgh, PA

**James Library, Norwell Center** - the show was rescheduled to September with the reception planned for Friday September 4, 2015. The show will run throughout the month of September 2015. Questions? Call Jeff at 781-878-4540 or 781-878-7310 or the James Library at 781-659-7100.

**Farm Day at the Daniel Webster estate** is Saturday, October 17, 2015 (with a rain date of Saturday, October 24th)

**AAW National Segmented symposium** for 2016 will be held in Quincy. Date unknown at this time



**Items For sale at the Club store : – contact [stevwsmn@aol.com](mailto:stevwsmn@aol.com) Steve Wiseman**

**CA GLUE; THIN, MEDIUM and THICK All are the SAME PRICE**

2 Ounce \$4.00, 2 Ounce rubberized \$5.00, 8 Ounce \$12.00, 16 Ounce \$21.00

2 Ounce Accelerator Spray Bottle \$3.00, 8 Ounce Accelerator Refill \$5.00, 2 Ounce Debonder \$3.00

\$.50, Long nozzles –package \$.75, 2 Ounce empty bottles \$.75, 2 Ounce replacement caps

**Epoxy** 4 Ounce \$5.00 **ANCHORSEAL** - 2 Liter \$15.00, 1 Liter \$8.00, ½ Liter \$4.00 **HATS** - \$15.00

**SANDING DISCS; 80 THROUGH 320 GRIT** - 2" \$2.50, 3" \$3.50

1" Disc Holder \$7.50, 2" Disc Holder \$8.50, 3" Disc Holder \$10.00

2" Blue Disc Holder \$12.00, 3" Blue Disc Holder \$14.00

½" Soft Pad Extension \$2.50, Hand Held Disc Holder \$11.00

Bottle Stoppers \$3.00, Bottle Stopper Chuck \$5.00

Tee Shirts \$16.00 \$2.00 More for 2X and larger Polo Shirts \$27.00 \$2.00 More for 2X and larger



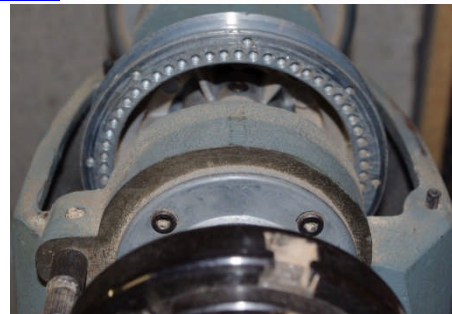
Assorted Maple? tool handle blanks



Pen blanks

**Delta lathe model No. 46-541P** for sale purchased new in 1994. It is a variable speed gap bed lathe with an indexing head. Comes with Nova chuck, drill chuck and other tooling. Capable of outboard turning and with a stand for a steady rest for outboard turning that can go with it.

Price: \$1200. Phone [508-669-5245](tel:508-669-5245). e-mail: [glenn@woodjoytools.com](mailto:glenn@woodjoytools.com)



*If you have any items sitting around that you no longer want, why not draw up a list and prepare some pictures that could be used in a forthcoming newsletter and on the club website? - items listed for sale in the newsletter or website will be reviewed after three months, or so, to determine if they should be removed on continued.*

# Audacious: The Fine Art of Wood from the Montalto Bohlen Collection

*On view February 21, 2015 through June 21, 2015*

Images available for download: <http://goo.gl/Zg4Sr6>



1.



2.



3.



4.



5.



6.





7.



8.



9.



10.



11.



12.



13.



14.

## **IMAGE USE GUIDELINES**

- 1)** Caption and credit information, including the appropriate copyright notice, must appear next to all reproductions.
- 2)** Images appearing online must have a resolution no greater than 72 dots per inch, with neither the length nor the height being greater than 7 inches.
- 3)** Images may not be reproduced in any single color other than black nor may they be printed on colored stock; no color variations are permitted.

## **IMAGE CAPTIONS**

- Fig. 1** David Ellsworth, *Intersphere* from *Solstice Series*, 1991, burned ash and pigment, 14 x 16 x 9 1/2 in (35.6 x 40.6 x 24.2 cm). Peabody Essex Museum, Gift of Lillian Montalto Bohlen. Photo by Terry Martin.
- Fig. 2** Stuart Mortimer, *Squid Series #2*, 2002, pink ivory, ebony, 22 1/2 x 7 x 7 1/4 in (57.2 x 17.8 x 18.4 cm). The Montalto Bohlen Collection. Photo by Dirk Bakker.
- Fig. 3** Alain Mailland, *Grace* (detail), 2000, locust burl, 7 1/4 x 10 1/2 in (18.4 x 26.7 cm). Peabody Essex Museum, Gift of Lillian Montalto Bohlen. © 2014. Photo by Walter Silver/PEM.
- Fig. 4** Robert Howard, *A Search for Order* (detail), 2007, Australian red cedar, 10 1/2 x 12 x 13 in (26.7 x 30.5 x 33 cm). The Montalto Bohlen Collection. Photo by Terry Martin.
- Fig. 5** Brad Sells, *Whirl*, 2003, cherry, 19 x 30 x 18 in (48.2 x 76.2 x 45.7 cm). Peabody Essex Museum, Gift of Lillian Montalto Bohlen. © 2014. Photo by Walter Silver/PEM.
- Fig. 6** Binh Pho, *Seven Poppies*, 2009, box elder, acrylic paints, 10 x 6 x 6 in (25.4 x 15.2 x 15.2 cm). The Montalto Bohlen Collection. Photo by Terry Martin.
- Fig. 7** Dick Coddling, *Untitled*, 2009, mahogany, oxidized copper tacks, 34 x 10 in (86.4 x 25.4 cm). The Montalto Bohlen Collection. © 2014 Peabody Essex Museum. Photo by Walter Silver/PEM.
- Fig. 8** Hal Metlitzky, *Double Helix*, 2012, black walnut, yellowheart, pernambuco, satine, holly, imbuia, old growth East Indian rosewood, East Indian ebony (6,500 pieces of wood), 10 x 19 in (25.4 x 48.3 cm). The Montalto Bohlen Collection. © 2014 Peabody Essex Museum. Photo by Walter Silver/PEM.
- Fig. 9** Frank Sudol and Cam Merkle, *Hawks & Owls*, 2000, birch, acrylic paint, 12 1/2 x 5 3/4 in (31.8 x 14.6 cm). The Montalto Bohlen Collection. Photo by Terry Martin.
- Fig. 10** Arthur Jones, *Exhibitionist*, 2001, walnut, 11x 25 x 11 in (28 x 63.5 x 28 cm). The Montalto Bohlen Collection. Photo by Dirk Bakker.
- Fig. 11** Ron Gerton, *A Tree Runs Through It*, 1998, spalted maple burl, bronze, 28 x 40 x 30 in (71.1 x 101.6 x 76.2 cm). The Montalto Bohlen Collection. © 2014 Peabody Essex Museum. Photo by Walter Silver/PEM.
- Fig. 12** Greg S. Smith, *Full Moon II*, 2010, figured maple, metal-complex dyes, high-gloss lacquer, 10 3/4 x 2 in (27.3 x 5.1 cm). Peabody Essex Museum, Gift of Lillian Montalto Bohlen. © 2014. Photo by Walter Silver/PEM.
- Fig. 13** Mark Bressler, *Superman Mini*, 2009, comic books, 4 1/2 x 5 1/2 in (11.4 x 13.7 cm). Peabody Essex Museum, Gift of Lillian Montalto Bohlen. © 2014. Photo by Walter Silver/PEM.
- Fig. 14** Derek Weidman, *Sage Grouse*, 2014, holly, ebony, redwood, pigments, 13 x 10 x 12 in (33 x 25.4 x 30.5 cm). The Montalto Bohlen Collection. Photo by Terry Martin.

The East India Marine Associates of the Peabody Essex Museum provided support for this exhibition.

**Warning:** All rights reserved. Unauthorized public performance, broadcasting, transmission, or copying, mechanical or electronic, is a violation of applicable laws. This product and the individual images contained within are protected under the laws of the United States and other countries. Unauthorized duplication, distribution, transmission, or exhibition of the whole or of any part therein may result in civil liability and criminal prosecution.

All other rights with respect to the work, whether now existing or which may hereafter come into existence, including but not limited to print publication, electronic publication in all media and formats which are not expressly granted to licensee herein are reserved to Owner.