

AS THE WOOD TURNS

June 2015 - Issue number 210 Minutes of the June 23th meeting.

Next Hands On- Saturday, July 25th summer party at Nigel's house (9 Wallace St., Berkley) This year we will have a coring demo using the McNaughton System. *We invite beginning turners to a learning opportunity at the Hands On for one on one instruction. Spindle or bowl turning techniques will be covered. Please reserve your lathe with Pablo Gazmuri @ pgazmuri@comcast.net*

Congratulations to Eileen for all of her work on our website ! It was announced at the AAW Symposium that we won second place in the website category. Nice going Eileen.



Five woodturners at the Stetson House demonstrating for Hanover Days June 20th.



Club booth at South Shore Arts Festival Cohasset



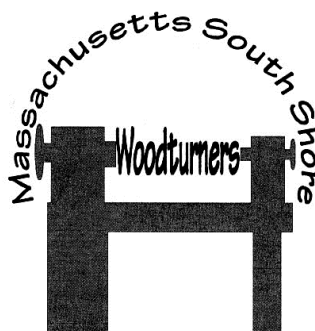
John Shooshan and guests

Visitors- Chuck Petitbon of Lincoln, RI, Michael Blutte of Milton, Martha Roach of Quincy, and Roger Hill of Cohasset.

Nigel began with a report on our show in Cohasset at the South Shore Arts festival. He said it was a great show for the club and things ran smoothly with Steve in charge of finances and Bob Allen and Ian helping out. John Shooshan turned tops for the kids...Steve reported \$5290 in net sales which was 6% over last year. What made it even better was that Sunday had rain much of the day and we still had sales. Nigel said the club got an extra corner a space 10 feet by 30 feet which was open at both ends (triple booth space). We also had a 10 foot by 10 foot tent set up next to it for turning. Although fewer members took part, we still had more sales. We took in \$4200 on Saturday, \$365 on Sunday. The low price was \$10, the high was \$1200. There were 70 transactions. People said we had the best booth there. The club made the front page of the Patriot ledger.

MSSW Officers

President- Nigel Howe
(508) 828-8463 nbhturnings@yahoo.com
Vice president David Rice
(508)-668-3064 dergas5@aol.com
Treasurer Steve Wiseman
(508)-285-9394 stevwsmn@aol.com
Secretary Tim Rix
(617)-259-5618 rix.tim@gmail.com
Librarian Bob Monaghan
(781)-910-2191 lathefriend08@yahoo.com
Webmaster Eileen Walker
(781)-545-1978 eileenturnswood@gmail.com



Next Meeting - Tuesday, July 28, 2015 - at Hank's dust bowl at 409 Washington St., Abington, MA at 7 pm

Refreshments – by Bill Dodge

Member Challenge – make a wine glass with a wooden stem

Demo – to be announced

The summer party will be held July 25th at Nigel's house at 9 Wallace Street in Berkley, Mass. It begins at 10:00 and goes until the last person goes home. It is potluck so bring a salad or a dessert or an appetizer. This year we will have a coring demo using the McNaughton System.

There will be a tool swap and sale. Bring your tools with a price tag on them for a table display under the tent out front.

There will be a regular monthly meeting July 28th (the fourth Tuesday)

AAW Project- Andy reported that while the project started slowly, it continued to build momentum as the deadline approached. We had 22 people in the club take part. Their names are listed on the parking spaces on the project. Steve will deliver it to the Symposium. "Do we want to sell it?" was a question we discussed. And do we want to have a low bid on it so that we at least recoup our expenses (\$250 was invested in cash outlay)? Andy proposed selling it no matter what. The motion was seconded and passed by members in a voice vote.



Michael Veno reported that the Brockton Summerfest will be held on August 15th from 10:00 until 4:00 at the Brockton High School. We will have a table and will turn tops for the kids. It was suggested we turn some tops in advance as demand may be high. Participating members are urged to bring wood to turn tops from to the booth.

Ken Lindgren announced that he had been contacted by the Massachusetts Department of transportation. They will be taking eight four foot in diameter trees down along the road in Jamaica Plain to make room for road work. The city wants to bring in a sawmill to cut the trees according to requests for wood. There are 24 to 36 inch diameter pieces of oak (don't know yet if it's red or white). So if you have a big lathe, here is an opportunity. Ken will find out if the loggers will cut crotches for us. Interested? –send Ken an email. Address to kenlindgren@norwoodlight.com.

Nigel asked members “-do we want fleece jackets with the club logo? I will look into it.”

Mike Veno said that the club needs fliers to hand out about us at shows.

Demonstration Ian Manley – turning wooden stems for wine glasses

Goblet - start with any inexpensive wine glass of your choice. Ian cuts the stem with Dremel with a diamond burr bit. Mark the glass where you want to cut it, approx. 1" below where the wood and glass will meet
 { <http://www.dollartree.com/household/kitchen-dining/Barware/500c526c1111/index.cat>. Lists glasses at \$1/ea in min. quantity of 4 }



sample turned stem wine glass



With the Dremel secured, bring the glass to the burr and create a light score line around the glass



Continue to apply pressure, on a second pass the glass should break cleanly, with no sharp edges.

Wood portion of wine glass – it is cheaper and easier to use two pieces of the same wood for the wine stem than one. Ian uses mineral oil and then applies bees wax with paper towel which he buffed on the lathe as a finish.

Stem - Using a piece of wood 1-1/4 x 1-1/4 x 5 drill a 1/2" hole about 1" deep.



Enlarge the hole into a tapered funnel that matches the base of your glass using a modified spade bit.

You can use the tool rest as a support for the spade bit to minimize chatter in drilling (treat it like a scraper).

Drill at a slow speed to avoid burning the wood.

Turn the top 3 to 4 inches of the piece into a stem design of your choice. Create a 3/8" tenon just below the stem which should be about 5/16" long. Finish sand, and if using a friction finish apply now. Part off the stem.

Base - Using a piece of wood about 3" x 3" x 5/8" mount to a disc or faceplate with double sided tape.



Turn the piece round to diameter that compliments your glassware. About 2-3/4" works in most cases.

Turn a recess in the base 2" in diameter 1/8" deep. Sand and finish the base.

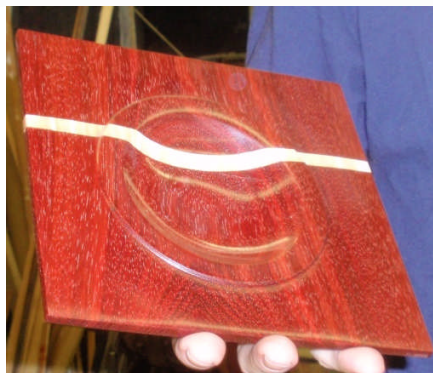
Remount the piece in the chuck using the recess. Drill a 3/8" hole 3/8" deep and turn the top side of the Base to a profile of your choice. Sand and finish the top side.

Assembly - Glue the stem and base together. Glue in the glass to the top of the stem. Ian uses a Urethane product called "Liquid Fusion" for this. Fill glass with wine sit back and enjoy.

Show and Tell



Pictured are a knife fork and spoon made by Mike Veno from Bamboo



Andy holds a square bowl turned from Padauk with a Maple strip glued between the two sections. He turned it on a screw chuck for the back, then turned it around on the lathe and placed it on a vacuum chuck. He used tape on the corners to better see where they were positioned as it turned



Andy again with a solid block which he cut in half, cleaned out the inside. The key is to get it tight enough and to also match the grain on both halves. It's turned from Marble wood.



Pictured is a distressed wood goblet turned by Ken Lindgren. He first shaped the outside, sanded it and added a couple of coats of two part epoxy. He used a dentist drill to pick out the bug scat. Next he used a hollowing tool on the bottom. The hard part was carving the stem. For the base Ken used a Dremel tool and a blow torch. The wood is Dedham maple.



Ian holds a segmented bowl which he said he took about 6 hours altogether to glue up and turn. The woods include Jatoba (*South American Cherry*) for the dark pattern with Maple. The bottom is a stepped plug glued on just two sides to allow for expansion.



Bill Roach holds a drum stick tipper for an Irish drum turned from Walnut.

And two members tried their hands at the challenge of making Saucer boxes :



Peter Soltz has a flying saucer box (pictured on the left) turned from Ambrosia Maple in which he recessed the lid into the shoulder of the box. He used the excess wood for the knob. He is also holding a small bowl from Maple.



Charlie McCarthy has a flying saucer box also which is turned from Ambrosia Spalted Maple.

Bob Glynn sent in a link to some large wooden bowls so here are two more



<http://www.wideas.com/other/the-biggest-wooden-bowl/>



Stuart Mortimer and friend



From Lumberjocks.com

Upcoming Events

Summerfest - August 15th at the Brockton High School from 10:00 to 4:00

James Library, Norwell Center -opening reception Friday, September 4th from 6:00 to 8:00 pm. The show will open with a reception on the 4th and will run through the month of September. Drop off times are Saturday, August 29th from 10:00 am until to 1:00 pm or Wednesday, September 2nd. from 1:00 to 5:00 pm. Items can be taken downstairs to the basement where the show will take place, or to the front desk. Pick up will be Tuesday, September 29th or Wednesday, September 30th. All items must have the price and name of the turner on them and be accompanied by a sheet for the library staff to help with keeping track of items sold. Questions? call Jeff (781) 878-7310 or (781) 878-4540 or Lisa Flynn (781) 588-4281.

Octoberfest held at the House of Prayer Lutheran church on Rte. 228 in Hingham on September 26th and 27th (Saturday & Sunday).

Farm Day at the Daniel Webster estate is Saturday, October 17, 2015 (with a rain date of Saturday, October 24th)

Arnold Arboretum in Jamaica Plain has an exhibition October 23 and 24, 2015. Our club could demonstrate on the lathe if we want. Also involved would be the Central New England Woodturners and the Revolutionary Woodturners

Friends of Abington Seniors Craft Show Saturday, October 31st. - the Senior Center located at 441 Summer Street, Abington where we will sell items and turn tops for kids.

Fuller Show news- juried club exhibit at the Fuller Craft Center, March 12 through June 5, 2016

AAW National Segmented symposium for 2016 will be held in Quincy. Date unknown at this time

Some pictures from the AAW symposium instant gallery



David Rice, Bob Allen, Kevin Coughlin, Steve Wiseman, Jeff Keller and Andy Osborne



Jeff Keller, Ian Manley, Bob Allen, Andy and Jamie Osborne



Bill Dooley in the instant gallery



Here we have a small bowl turned & dyed by Cindy Drozda who addressed getting the maximum out of your burls.



Pictured is a necklace made from African blackwood by Ashley Harwood at the symposium.



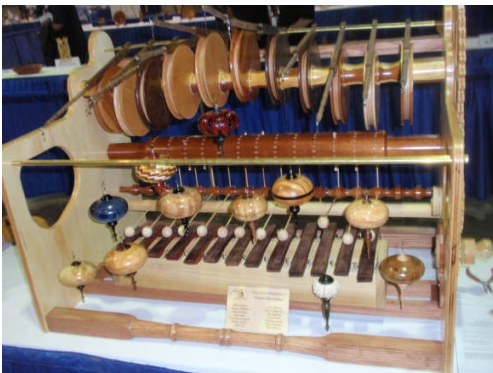
Miniatures by Joy Moss



Some of Nigel's entries



A few of the "AAW empty bowls" contributions



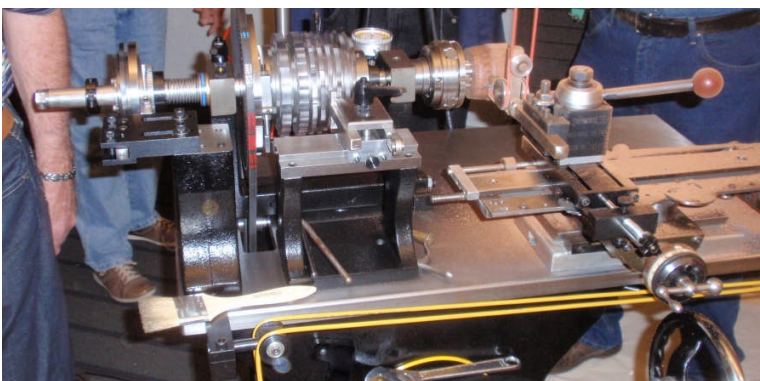
First prize in the Technical category and best of Show as voted by the attendees



Effective display of spheres by Dick Gerard.



Is it Halloween already?



Ornamental Rose engine lathe by Lindow & White



Sample ornamental turnings



Finials by Avelino Samuel



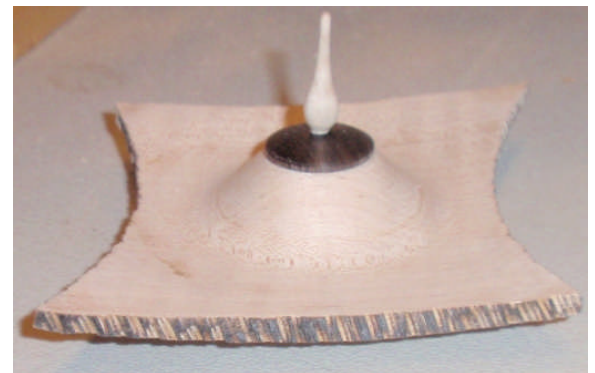
Hollowforms by Avelino Samuel



Pyrography by Janice Levi



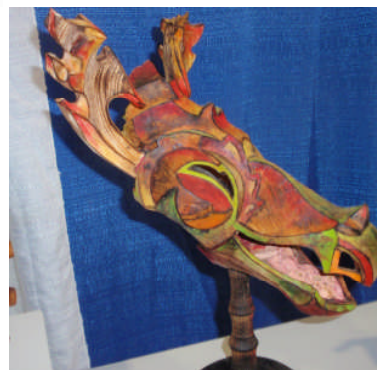
Our view straight away from behind home plate in the mezzanine section of PNC Park where the Pittsburgh Pirates were playing the Atlanta Braves. The Bucs won in a come from behind in 10 innings



You're looking at a square sided box that was the demo by Mark St. Leger



Impressive wall hanging of maple burl (yes it's all one piece). Light areas are gold leaf.



Nice example of pierces and dyed work.



Example of burning and piercing by Janice Levi

Items For sale at the Club store : – contact stevwsmn@aol.com Steve Wiseman

CA GLUE; THIN, MEDIUM and THICK All are the SAME PRICE

2 Ounce \$4.00, 2 Ounce rubberized \$5.00, 8 Ounce \$12.00, 16 Ounce \$21.00

2 Ounce Accelerator Spray Bottle \$3.00, 8 Ounce Accelerator Refill \$5.00, 2 Ounce Debonder \$3.00
\$.50, Long nozzles –package \$.75, 2 Ounce empty bottles \$.75, 2 Ounce replacement caps

Epoxy 4 Ounce \$5.00 **ANCHORSEAL** - 2 Liter \$15.00, 1 Liter \$8.00, ½ Liter \$4.00 **HATS** - \$15.00

SANDING DISCS; 80 THROUGH 320 GRIT - 2" \$2.50, 3" \$3.50

1" Disc Holder \$7.50, 2" Disc Holder \$8.50, 3" Disc Holder \$10.00

2" Blue Disc Holder \$12.00, 3" Blue Disc Holder \$14.00

½" Soft Pad Extension \$2.50, Hand Held Disc Holder \$11.00

Bottle Stoppers \$3.00, Bottle Stopper Chuck \$5.00

Tee Shirts \$16.00 \$2.00 More for 2X and larger Polo Shirts \$27.00 \$2.00 More for 2X and larger



Assorted tool handle

and pen blanks



Lathe's and Bandsaw for sale

Linda Early –has several items for sale in Brimfield, Ma. She can be reached at

naturesgallery@charter.net cell 508 736-1656

-Delta 1440 wood lathe, 8 years old, maybe 30 hours use. - asking \$600.00, includes several gouges

-Rockwell Model 14 bandsaw - asking \$200.00

-several Cherry burls.

Steve announced that he also has a Jet with a Reeves drive for sale. It has a 14 inch swing. The headstock turns 360 degrees. - contact stevwsmn@aol.com Steve Wiseman

Free Wood from Bob Sutter

"I seem to have more wood then I can ever use. Any one who wants to raid my pile can do so by calling me to set up a time at 781-294-4131. My address is 65 Caledonian Ave., Hanson, Ma"

Available are logs about 18 inches long and 12 inches d. Oak, Birch, Cherry and undefined. Some crotch, most selected for possible fine figure All have been waxed and been drying for up to 2 years or more.