



AS THE WOOD TURNS

February, 2021

ISSUE 275

MSSW OFFICERS

President

Joe Centorino
(617) 529-4997
jcentorino@verizon.net

Vice president

Sonny Tice
(617) 835-0810
gmt1113@yahoo.com

Treasurer

Charlie McCarthy
(781) 953-4368
chasmcca@msn.com

Secretary

Kevin Mulligan
(508) 954-9346
Kevin.mulligan55@yahoo.com

Librarian

Lenny Mandeville
(508) 586-7679
manleo@comcast.net

Webmaster

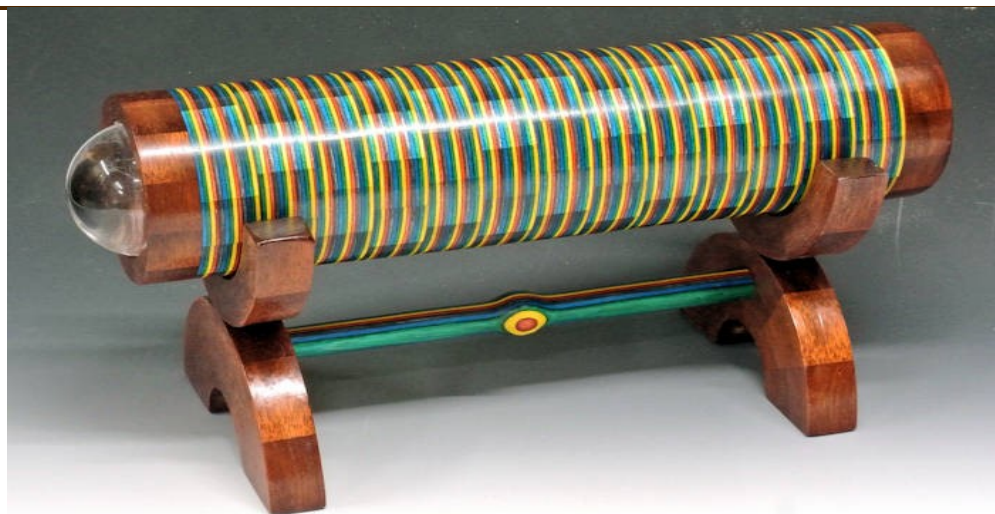
Tim Rix
(617)-259-5618
rix.tim@gmail.com

Store Supplies

Ron Reynolds
(508) 697-3927
reynoldsrn@comcast.net

Newsletter Design & Publication:

Jeff Keller / jkeller@nerej.com
David Linskey / dlinskey@aol.com



Pictured, is a kaleidoscope, created by Wayne Miller. The body of which along with the lower stem support is turned from "confetti spectroscopy" It is 13-14" long with its glass lens. Wayne said he used a big Forstner bit to drill the center out. The base is bloodwood.

Minutes

These are the minutes of the November club meeting held online via ZOOM, January 26th, 2021

- ◆ Joe began reminding members that the Hands On sessions are suspended through March except for online sessions coordinated through Pablo.
- ◆ Joe also reminded members that those needing supplies from the club store or to pick up wood from out back of the club house should contact himself or Charlie McCarthy first. Joe added that Sonny has added another double tiered pallet rack out back for large pieces such as the maple, oak and wood from the Arboretum.
- ◆ Joe said the link for the Phil Rose video went out and is available for viewing after the fact as well.
- ◆ Kevin told us that he has mailed 50 new membership cards for 2021 to paid up members for use in getting a 10% discount at Woodcraft in Walpole. There are some restrictions on this discount

(i.e. power tools, board lumber for example). Joe said he will post a list on the club website. Also to let Woodcraft

Next Meeting

Tuesday, February 23rd 2021
Virtual Meeting Hosted by
ZOOM @ 7PM

Demo

A Virtual Shop Tour of Lenny Langevin's shop

Joe will present a mystery video

Hands-On

Postponed until March

New Members/Guests

New Member

Jeff Donnelly of Pembroke, MA

Guests

Former long term member,
Ron Robertson of Scituate

New members,
Frank Randazzo
Scott Matterna of Plymouth
Rob Gilmore of Plymouth

UPCOMING EVENTS

CLUB MEETINGS

Virtual Monthly Meeting Hosted
by ZOOM @ 7PM
February 23, 2021

Hands-On

Due to the current pandemic restrictions we have suspended our in-person Hands-On events but many of the members are offering 1-on-1 instruction either in their shops or in your shop or even on-line using Zoom or Skype.

Pro Marine Epoxy Demo

Wednesday, March 24 @ 6:30PM
Via ZOOM

WHAT TO WEAR

More from the Store

MSSW GEAR

Caps	\$15.00
Tee Shirts	\$16.00
2X Tee Shirts	\$18.00
Polo Shirt	\$27.00
2X Polo Shirt	\$29.00

know you are a member before they ring you up in purchasing something.

- ◆ Charlie said the club now has \$3659 on account. Dues are now due if you haven't paid up. Also he told us the new AAW magazine (February 2021) has an article by Joe in it on the Plymouth celebration entitled "Trans-Atlantic Collaboration Highlights 400th Anniversary of Plymouth Landing". Also featured are photos of Joe's bowl now carved with a picture of the Mayflower ship (by Brian Marks). Nice piece.
- ◆ Joe added that he hasn't been able to be in contact with the Plymouth club for a month now. "So I don't know how they are surviving the pandemic".
- ◆ Lenny Mandeville told members he has nothing new to report but if they are looking for a publication, he will look for it.
- ◆ Pablo reminded us that "we can still be in touch during the pandemic. I encourage this".
- ◆ Joe said, "Mentors, if you can gather links from YOUTUBE and send them to me and to Tim Rix we can post them on the club website. AAW has some links as well".
- ◆ Steve spoke up and said "The AAW has a list of vetted videos, the best of the best for members".
- ◆ Bob Allen told us "February 2nd. at 6:00 pm Rudy Lopez will open up to begin his demo at 6:30 and there is no charge. He will be turning a winged bowl (possibly with a natural edge). Joe answered that he has an invite for ZOOM and will send it out to members. Bob continued by remarking that the Cape Cod club has Rudy scheduled for turning a natural edge end grained vase. There is a \$10. charge for this one. You also need to preregister. He said that Rudy is "very deliberate on fundamentals".
- ◆ Ron Reynolds said that the club store was in good shape and was well supplied to meet members requests.
- ◆ Ed O'Riordan who has been coordinating the chainsaw parties told us there is some honey locust in Milton. It measures 20" across, is 14' long and the homeowner is dealing with an arborist. There may also possibly be some

Mentor List

Ron Beland	beels134@gmail.com 617-651-6186
Joe Centorino	jcentorino@verizon.net
Pablo Gazmuri	pgazmuri@comcast.net 781-690-7600
Jeff Keller	jkeller@nerej.com 781-878-7310
Lenny Langevin	lennyminiatures@gmail.com
Ken Lindgren	kenlindgren@norwoodlight.com
Ian Manley	ihmserv@comcast.net 508-272-5763
Charles McCarthy	chasmcca@msn.com
Wayne Miller	wayne33@pztturn.com
Kevin Mulligan	kevin.mulligan55@yahoo.com
Andy Osborne	simpnat@msn.com
Ron Reynolds	reynoldsrn@comcast.net
Albert Vandam	arvandam42@gmail.com
John Voloudakis	ohn.voloudakis@gmail.com
Steven Weisman	stevwsmn@aol.com 774-265-5243

walnut. Joe reminded us that you can tell if it is honey locust if the wood turns green under a blacklight.

- ◆ Mike Veno told us, "I've roughed the cherry pieces for small bowls but the maple is too dark so I'm working on box elder". This for members to finish turning and finish the wood however they choose so that members can compare different finishes and discuss their merits.
- ◆ Bob Courchesne asked about buying bowl blanks for turning. Peter remarked that Cook Woods online (located in Oregon) has them for sale. Wayne added that he has bought some from them and that "they are good stuff".
- ◆ Next Joe shared the Wheel of Fortune on our screens that was used to determine winners in the Christmas party swap. He said it shows the names of

members who have paid their dues up to this point. The winner gets a gift certificate to Craft Supply. The winner was Jeyna Deame.

- ◆ Joe said that Thursday evening would be good again this week for online sessions and that it would also be good next week then he is switching to Wednesday evenings.
- ◆ Ron Robertson spoke up and told us "I have sold all of my wood blanks, my lathe, drum sander, dust collector, and there is not much else left". He said he has three bottomless bowls cut apart from Malcolm Tibbetts.
- ◆ Next up is a shop tour by Charlie McCarthy of his shop. He remarked, "I've been in this house since 1992. I'll be here until they drag me out..." He added that when turning, he always sets aside a half hour for cleanup before quitting.

In the Beginning...

Former Massachusetts South Shore Woodturner member Roger Hill recalled that the Massachusetts South Shore Audubon Society on Rte 3A in Marshfield was the host of a pre Christmas holiday sale of turned items in November of 1966. This came about because their director Ellyn Einhorn knew Wally Kemp through seeing his turned items for sale at the Silver Ribbon store on Rte 53 in Pembroke. She asked him if he would be interested in displaying items for sale at Audubon prior to the Christmas holiday. Wally replied, "Sure if I can include some of my woodturning friends also." Others in the show were Hank Cahill, Al Vandam, Jack Nash and Roger Hill. John Shooshan (*our only original and continuous club member*) also stopped by. Prior to this, Wally, Hank, Ernie Grimes and others were driving out to Worcester each month to attend meetings at the Central New England Woodturners. It was suggested by someone that they should get together and start their own woodturning club. Hank said that since he had a large barn attached to his home in Abington with several

lathes that they could meet there. The first club newsletter was published in May of 1997. At the previous meeting, Wally had suggested future meetings be held at different shops in addition to Hank's Dust Bowl on a rotating monthly basis. The newsletter name, "As The Wood Turns" was selected by members from a list of several suggestions by Mal Partridge who also produced and designed the club logo.



MEMBER STORE

GLUES

Description	Price
2 oz. CA	\$4.50
2 OZ. Rubberized	\$6.00
8 oz. CA	\$13.00
16 oz. CA	\$23.00
2 oz. Accelerator (spray bottle)	\$3.50
8 oz. Accelerator Refill	\$5.75
2 oz. De-Bonder	\$3.25
4 oz. Epoxy	\$6.00
2 oz. Replacement Caps	\$0.50
Long nozzles	\$0.75
2 oz. Empty Bottles	\$0.75
Yorkshire Grit	\$10.00

ANCHORSEAL

Description	Price
Large (approx. 1 gallon)	\$16.00
Medium (approx., 1/2 gallon)	\$9.00
Small (approx. 1 quart)	\$5.00

SANDING DISKS

Description	Price
2"	\$3.50
3"	\$4.50
2-2/14" Scollap	\$10.00
2" or 3" Replacement H&L	\$0.50
2" Holder	\$10.50
3" Holder	\$12.50
2" Blue Holder	\$14.50
3" Blue Holder	\$16.50
1/2" Soft Interface Pad Extension	\$5.50
3" Hany Sander	\$8.50
Sanding Taco	\$4.50
2" or 3" Hand Help Holder (Kidney Shape)	\$12.50
3" Lambswool Buff	\$9.00



Pictured, is a box turned by Peter Soltz from a limb from his neighbor's yard which upon completion, he gave back to them.



Pictured, are glass jars with turned lids which were in turn epoxied to their metal counterparts.



Pictured, was a natural edge bowl that flew off the lathe and broke into three pieces. Oh well sometimes bad things just happen.



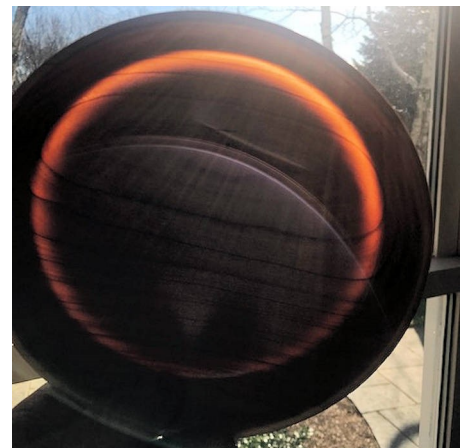
Pictured, is a natural edge bowl turned from ambrosia maple by Peter Soltz



Pictured, are three bowls turned by Peter Soltz



Pictured, is another ambrosia maple bowl by Peter Soltz. It is shallow with a smooth rim.



Pictured, is one of Peter's 3 bowls which when held up to the light shows the light through the thinness of the base.



Pictured, is the natural edge bowl assembled from its pieces that flew off the. No injuries at least.



Pictured, are two natural edge bowls turned by Ed O'Riordan. On the left we see a bowl turned from white oak with a feather pattern in the bottom. The bowl on the right was turned from cherry. Both were wet sanded and finished with Danish Oil. Ian remarked that the placement of the ruler in front is a great reference for size.



1 of 3 pictures showing us 2 bowls turned from Mahogany by Bob Courchesne



A side view of the Bob's bowls turned from Mahogany



A view from the bottom. These bowls were finished with wax, using the BEAL system.



Lenny Langevin turned these three little goblets with feet using maple and ebony as the wood. The ruler is a good idea to judge their scale. Interesting shapes.



Pictured, are five objects turned from black walnut by Ellen Williams, from a 20" log. You can see three bowls, a vase with a finial, and a hollow form.



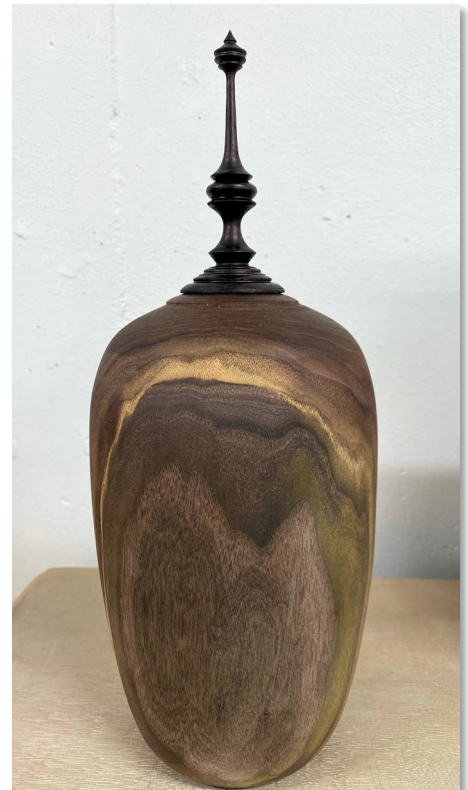
Pictured is another bowl from Ellen's Black Walnut Log



1 of 2 pictures of a highly figured maple burl bowl with bark occlusions turned by David Rice. The diameter is 13" and it is 6" tall.



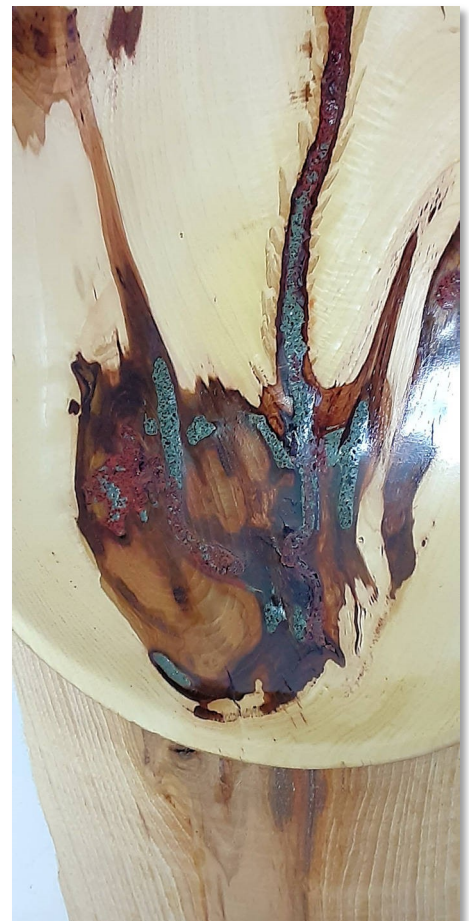
Dave finished the bowl with TUNG oil. He said the wood was 5 years old but kept moving when he was working on it



Ellen's Vase with Finial. She dyed the finial on the base to be ebony in appearance. She told us she used RITT liquid black dye and considers it excellent.



Ken Lindgren showed us his use of the club off-lathe tool rest, positioned to turn a good sized blank. Ken said the tool rest weighs in at about 200 lbs.



Pictured, is a hickory crotch from Walpole with its heartwood turned by Ken Lindgren. Ken filled the bark inclusion with coffee grounds and glue. He inserted red and green dye into the coffee grounds for added effect.



Pictured, is a box turned from an Australian burl (possibly Red Mali) turned by Steve Wiseman. Its' stem is turned from Maple, it has a Maple lid and the finial is ebony. It measures 9-10" tall by 8" wide.



1 of 4 photos taken by Charlie McCarthy of his burl goblet showing different mounting procedures. Here, you can see the tenon formed halfway up the flute.



Pictured, is the mounting of the goblet by the tenon formed halfway up the flute with extra long jaws.



Pictured, Charlie's burl goblet remounted for the removal of the tenon from the flute.



Pictured, is the finished flute of the goblet.



Pictured, is a vase wet turned by Andy Osborne from Walpole Hickory. It is 3/8ths of an inch thick. Andy used milk paint to fill the grooves. It is 13 1/2" high by 5 1/2" wide. He used a trim router to form the grooves with a jig.



Pictured, is a deep cherry bowl with a pierced rim 6" by 6" turned by Andy Osborne. Andy used WATERLOX for its finish.



Pictured, is the finished goblet by Charlie McCarthy, shown with with an ebony stem. This exercise was inspired by a demo by Cindy Drozda.



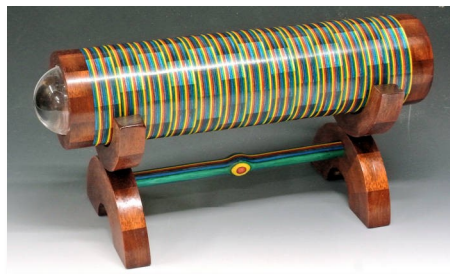
Pictured, is a lidded segmented box turned by Wayne Miller, his first box ever. The segmented wood is spalted apple. The lid and base while also from apple is not spalted. It measures 3" in diameter.



Pictured, are 4 segmented Christmas bells consisting of glued up yellow heart and honey locust veneers. There were five but Wayne said the fifth one shattered.



Pictured, is a chalice turned from apple by Horace Lukens. He said it was designed to accompany the platter it is sitting on.



Pictured, is a kaleidoscope, the body of which along with the lower stem support is turned from "confetti spectroscopy". It is 13-14" long with its glass lens. Wayne said he used a big Forstner bit to drill the center out. The base is bloodwood.



Pictured, is a quilted Maple platter turned by Harace Lukens



Pictured, is a box with a large finial turned by Horace Lukens from dark cherry that is 5-6" in height.



Pictured, is a bowl segmented and turned from the aforementioned confetti spectroscopy. It is 5-6" in diameter. The segmented ring on top is Yellowheart. Wayne finished it with brush on lacquer and Renaissance wax.



Pictured, by Harace Lukens, is a small bowl also turned from apple side grain showing the center pith at each side.



Pictured, is a goblet turned by Horace Lukens



Pictured, is a segmented curly maple and bloodwood native American wedding vessel. It shows a leather braid hoop connecting the two openings. Also, finished in lacquer. Unfortunately it got lost in the mail to its recipients in Canada



1 of 2 goblets from the lathe of Pablo Gazmuri. Pictured here is his Black one.



1 of 2 goblets from the lathe of Pablo Gazmuri. Pictured here is his Red one.



Pictured, is a small bowl in maple displayed by Michael Veno.



Micheal's mom got it in the 1960s and used it as a salad bowl. It's held up well.



Another view of the 50+ year old bowl.