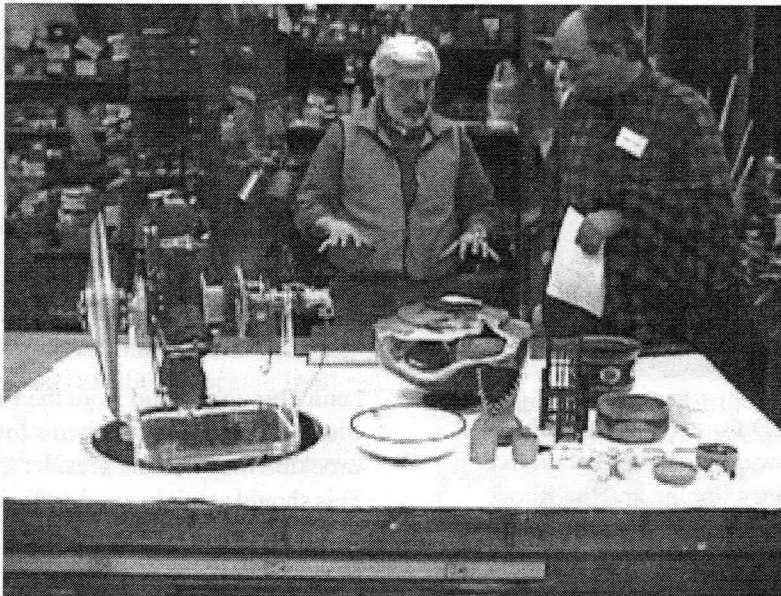

AS THE WOOD TURNS

April 2005

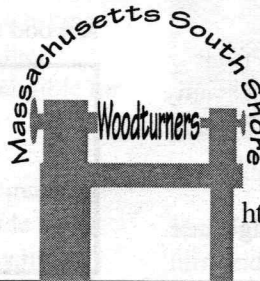
Woodturners Have Many Talents



Lenny Langevin demonstrates playing the piano to Jeff Keller, but forgot the piano!

2005 MSSW Officers

President - Hank Cahill (781) 878-0234
Vice President - Richard Friberg (508) 378-2436
Treasurer - Wally Kemp (781) 871-1390
Secretary - Mal Partridge (781) 843-3883
Librarian - Leonard Mandeville (508-586-7679)
Newsletter - Mal Partridge (781) 843-3883
Web site: <http://www.mssw.sitelinker.org/>



Next Meeting

Tuesday, April 26, 2005, 7:00 P.M.

At Hank Cahill's *Dust Bowl*

Refreshments by: David Hutchins

Member Challenge: Carver's mallet - see:

<http://www.newwoodworker.com/trnmalet.html>

Demonstration: TBD

Meeting Minutes

The meeting was called to order at 7:00 pm at Hank Cahill's Dust Bowl

President's Report and General Business

The meeting was called to order by V.P. Richard Friberg in Hank's absence. Guests introduced: Ed Morey and Ed Flynn.

Treasurer Wally Kemp reminded members that dues are due for 2005 and accepted an invoice from Mal for 4 months newsletter expenses for \$110.48. He received a newsletter from CERF and a thank you from AAW for \$75 insurance contribution.

Lenny the Librarian reported on a new video for the library - Son of Skew by Alan Lacer. He also asked members to let him know what new books or videos they would like added to library.

It was agreed that a Hand's On session would be held on Saturday April 16 at Hank's shop.

Ernie donated the book Turning Boxes with Richard Raffan to be raffled off to a member during wood raffle.

Mal made available a CD for each member that had slide shows showing how our AAW Collaborative projects the Gnome Rotary Engine and the Rhode Island Capitol Dome were fabricated. The two files were in Acrobat format and required Adobe Reader version 6 or 7 to display properly. The Gnome file included engine sound and animation. Click to change pages, esc to exit full screen.

A binder with information from Max Krimmel's web site with details on turning Alabaster was made available to members. Jeff Keller received Alabaster from his wife as a present and informed Mal of this site which he felt would be of interest to other members.

Mal mentioned a great program available **free** from Google. The program is Picasa 2. It helps you instantly find, edit, and share all the pictures on your PC. As requested this is the site to download the program: <http://picasa.com/>
Click on "support" for user guide and knowledge base. Try it - you'll like it!

Wally reported that Audubon Farm Day is October 1 and they have requested photos of woodturning at member shops for publicity.

He also mentioned that Norm Abrams would be woodturning on Channel 2, Saturday March 26th at 4:30pm.

Angelo reminded members that the AAW Symposium 2005 will feature "reTURN to the Land of Oz" the theme of the AAW's next invitational and juried exhibit. He has given information to Ken.

Bob Sutter made available brochures for a low cost source of band saw blades: Woodcraft Bands, Inc.

Harold Dyke mentioned the EASTEC show May 24-26 at Eastern States Exposition Grounds, West Springfield. See sophisticated machine tools in operation. Web site: www.sme.org/eastec

Ken reported that we will have an exhibit at the 50th Annual South Shore Art Center Arts Festival, June 17-19 on the Cohasset common. We were accepted as an exhibitor, one of 85 out of 170 applications! Ken will be the coordinator. We will have 2 tents for demonstrating and sales.

Lenny brought wood from the Liberty tree for members who volunteered to turn items for distribution to the Brockton mayor, bank president, Historical society, etc. This should result in good publicity for our group. Local newsletters will be notified when we present our turnings.

Wally suggested we sell the General Mini lathe, as it is heavy to transport, and standardize on the Jet Mini lathe. It was agreed that we would purchase additional Jet Mini Lathes. Note: Since the meeting some members feel we should keep the General as it is a well made lathe. This can be discussed at upcoming meeting.

A wood and book raffle was held.

Welcome New Member
Edward Morey
From East Bridgewater

Fuller Craft Museum

Ken Lindgren, assisted by Mike Veno taught the first Fuller woodturning class in March. It ran fully enrolled with students coming from as far as Manchester, NH!

We had 6 mini lathes at Fuller, four MSSW, and one each from Ernie and Rory.

Another turning workshop will be held Saturday, May 14th. 10am-5pm. Ken and Wally will be the instructors.

Fuller has accepted our proposal for an exhibition of woodturnings by MSSW. They anticipate our show to be on view January 14 - March 12, 2006.

Mal has received Community Exhibition Guidelines, which outlines what has to be done prior to our exhibit.

A committee should be set up at the next meeting to assign responsibilities to make this a display of our craft that will show to the public that woodturning is indeed a craft to be enjoyed for it's beauty as Art Forms in Wood.

We have been working for years to establish a relationship with Fuller. Thanks to the efforts of John Murphy, Wally Kemp, Ken Lindgren and other members we now have a chance to show what woodturning is all about..

Meeting Presentations

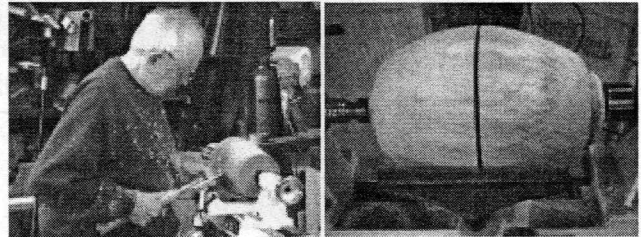
Angelo Iafrate,
Vice President, AAW Board of Directors

Angelo gave an interesting talk about the inner workings of the American Association of Woodturners. He is chair of the Conference and Educational Opp. Grant Committees and on the Finance Committee. There are now 11,400 members and 230 chapters.

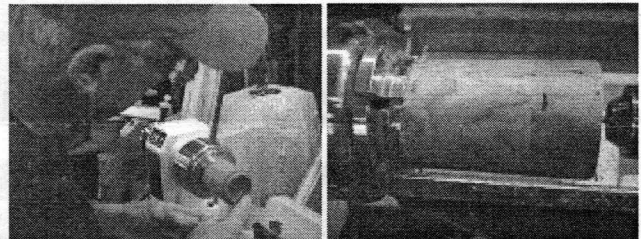
Educational grants were discussed and the possibility of a grant to Fuller for lathes for their new woodworking studio or lathes for our classes at Fuller and other locations. Individual AAW members are also eligible for grants.

Mal brought in the Gnome Rotary Engine, as many new members have not seen it, and gave a slide show that detailed how it was fabricated by team members.

Hand's On Turn & Learn Saturday, April 16, 2005



Bernie's not turning a large egg - two bowls at once!



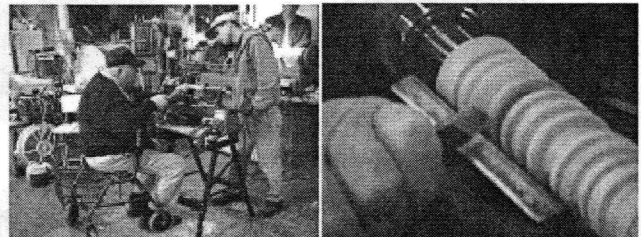
Jim touches up the inside of his box



Ken demonstrates and critiques detailed techniques for turning a natural edge bowl for Bob



Wally shows new member Ed Morey the basics of spindle turning and tool use

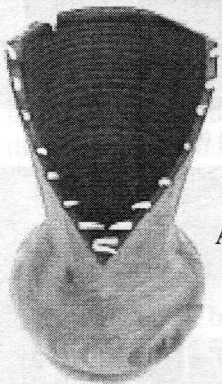


Hank shows the proper use of the skew to Ed

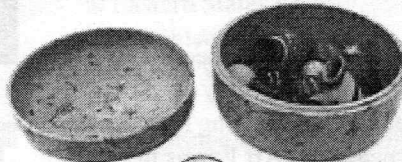
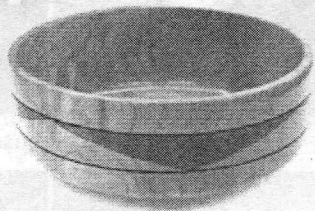
Hand's on sessions are a popular Saturday chance to turn and learn. Plus conversation with coffee & donuts.

Show & Tell

March 2005

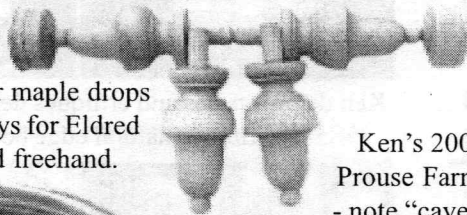


Andy Osborne's "Kiss me Darling" mouth uses wife's shells for teeth. Wood burner and lye to color cherry bowl.



Angelo's miniature turnings - note two rings on small cup. He has also been turning "tricks" for a magician.

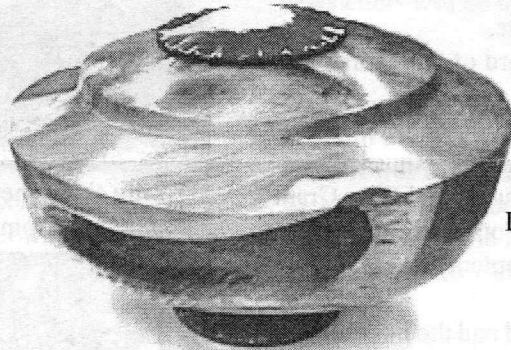
Jesse Meyer's tiger maple drops for flat top highboys for Eldred Wheeler. Turned freehand.



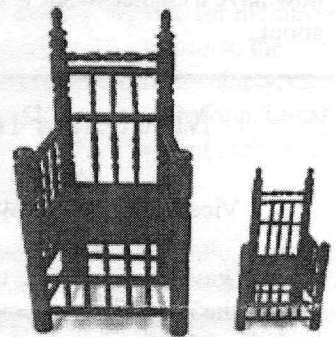
Ken's 200 year old yew from Prouse Farm with enhancements - note "cavern" view with details.



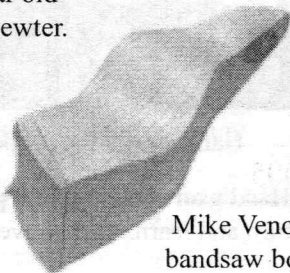
Harolod Dyke's segmented bowl from 136 pieces of 65-70 year old wood with quarters inlaid in pewter.



Lenny Langvin's segmented batton and stained oak miniature chairs.



Richard Friberg's Bandsaw box.



Mike Veno's bandsaw box.



Jeff Keller's bandsaw boxes and Alabaster bowl - 1/8" wall with wood band rim.

