

---

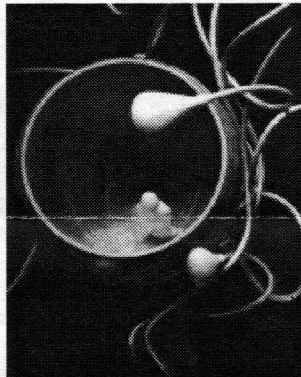
# AS THE WOOD TURNS

---

February 2005

---

## The Evolution of Michael J. Brolly

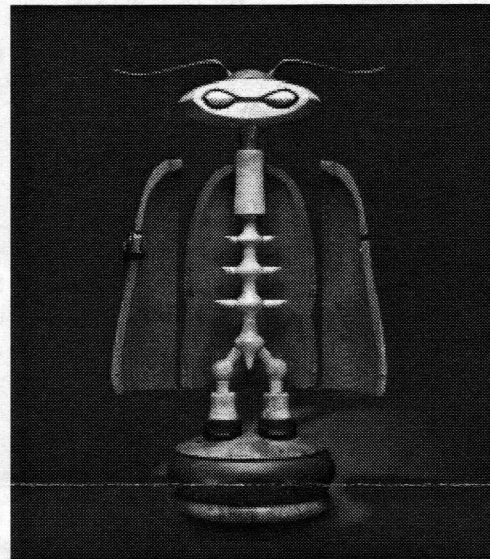


Self Portrait as a Very, Very Young Man



As a Young Man

For the latest Michael J. Brolly - see inside



As a Young Man Revealed

Images Copyright Michael J. Brolly

### 2005 MSSW Officers

**President** - Hank Cahill (781) 878-0234

**Vice President** - Richard Friberg (508) 378-2436

**Treasurer** - Wally Kemp (781) 871-1390

**Secretary** - Mal Partridge (781) 843-3883

**Librarian** - Leonard Mandeville (508) 586-7679

**Newsletter** - Mal Partridge (781) 843-3883

**Web site:** <http://www.mssw.sitelinker.org/>



### Next Meeting

Tuesday, February 22, 2005, 7:00 P.M.

At Hank Cahill's *Dust Bowl*

Refreshments by: Philip Todd

Member Challenge: Miniature turnings

Demonstration: TBD

## Meeting Minutes

The meeting was called to order at 7:00 pm at Hank Cahill's Dust Bowl

### President's Report and General Business

Guests present were Herb Osborne, Denise Cahill and Richard Angus.

Hank received correspondence from AAW concerning Liability Insurance which covers the audience when members are demonstrating woodturning. See article in the Winter 2004 issue of American Woodturner.

Officers were relected for 2005 with Richard Friberg as Vice President to replace Felix Troiano.

Treasurer Wally Kemp reported \$1084 in treasury. Members were reminded to pay their dues for 2005.

Lenny the Librarian reported on 3 missing videos and new books and videos donated by Hank, Sid, and Nigel. He also mentioned that the wood from the Liberty Tree cut down in Brockton may be available for members to create turnings for presentation to the Mayor and Historical Society. Contact Lenny if interested.

Our woodturning demonstration at Fuller Craft Museum will be held from 12 to 5 on Saturday, February 26th.

The March 12th Introduction to Woodturning \$75 Workshop at Fuller is shown in their catalog and Wally is requesting that members loan or supply extra tools for the students to use. Spindle gouges, skewers and parting tools are needed. Put your names on tools if on loan. A number of students have signed up and Wally has suggested that we might pay for a class for a deserving young person. If you have someone in mind contact Wally at next meeting.

Audubon Farm Day is October 1 and will feature Crafts and Demonstrations. Members said that sales were good at our 2004 Exhibit at Audubon.

Nigel reported that a White Oak tree will be cut down next spring in Marlboro. See him for details.

A hand's on session at Hank's shop will be held on Saturday February 12th, at 10:00 am.

Peter Teubel has two Lathes for sale. A Grizzly @\$100 and a Jet @\$250. For details you can contact him at (508) 662-4932 or pteubel@comcast.net.



Hank's carving - "On The Fence"

From Fuller Catalog

### WOOD

#### INTRODUCTION TO WOODTURNING WORKSHOP

Instructor: Wallace Kemp

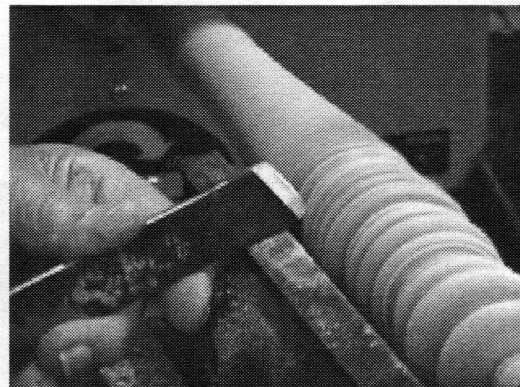
Ability level: beginner, ages 16 and older welcome  
Learn to work "in the round" with wood! This workshop will begin with a discussion and demonstration of the anatomy and workings of the lathe, woodturning tools, sharpening, and safety. Individual lathes will be available for "hands-on" teaching. Turning of chess pieces will be demonstrated to coincide with Fuller Craft's Chess exhibition. Turning tools will be provided, but students who have their own are encouraged to bring them to class. All students should bring eye protection.

1 class

Saturday, March 12

10:00am - 5:00pm

Mem: \$75 Non-Mem: \$90



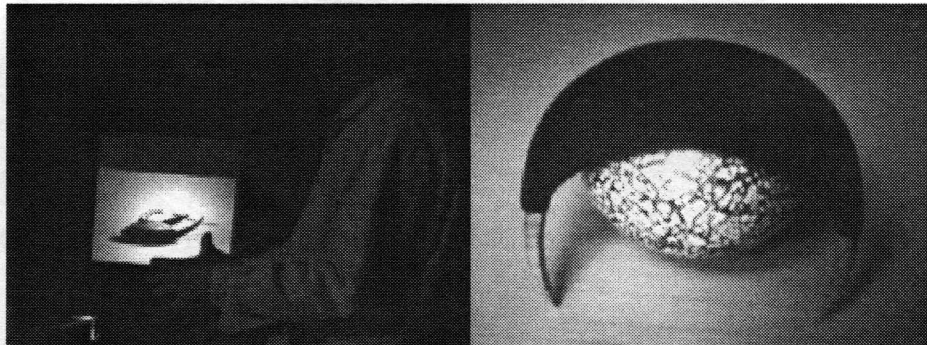
We weren't kept in the dark as Michael Brolly explained in detail and with humor how he fabricated his unique turned and carved pieces

He kept us abreast of things relating to the art of woodturning.

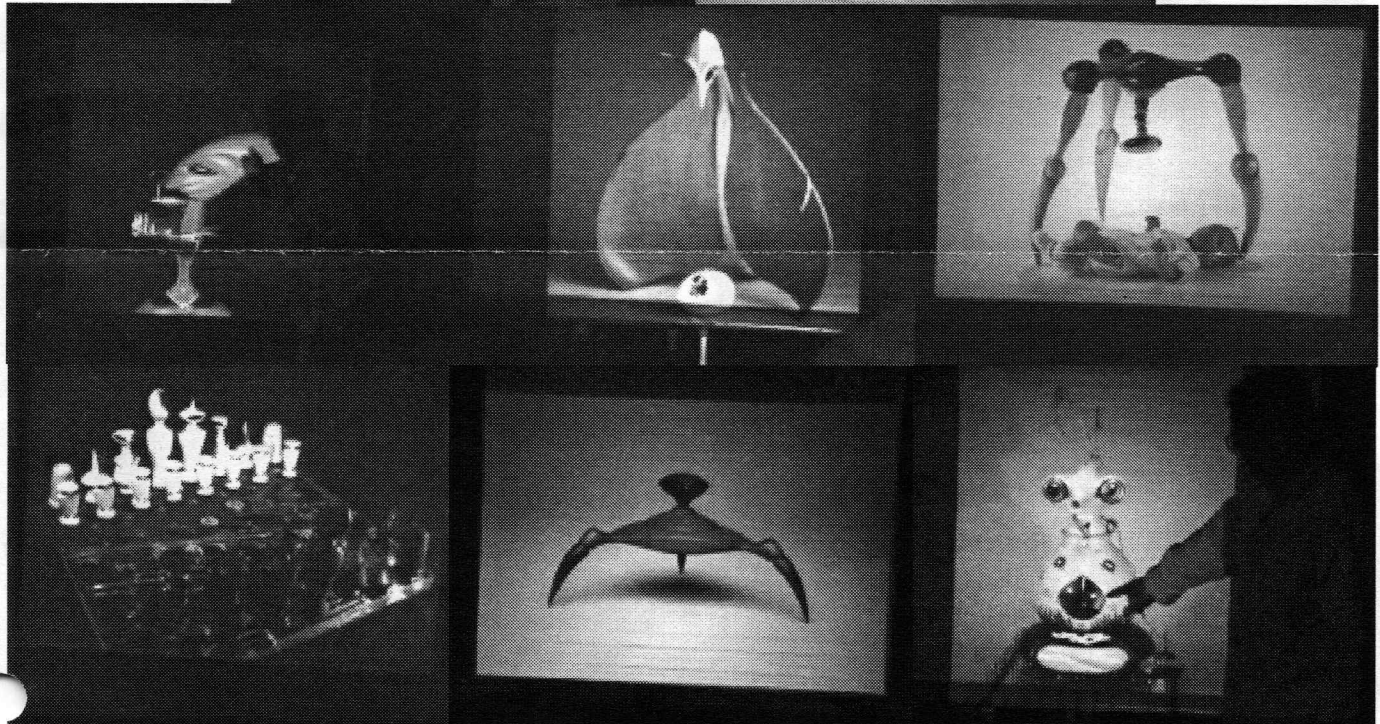


The members would bust out laughing at his clever descriptions of his work.

Slide Show



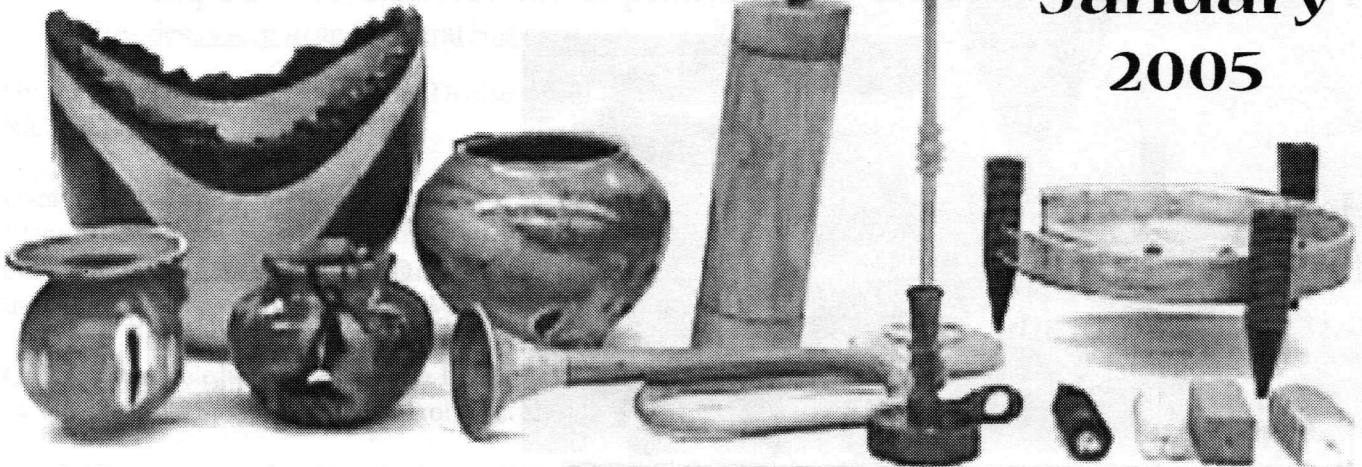
Lecture



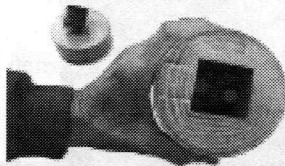
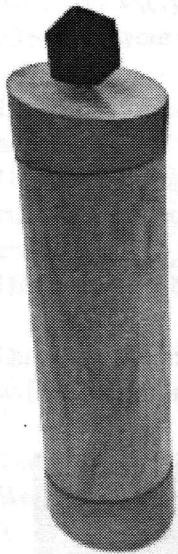
Visit his web site to view his works in the resolution they deserve: <http://www.michaelbrolly.com/>

# Show & Tell

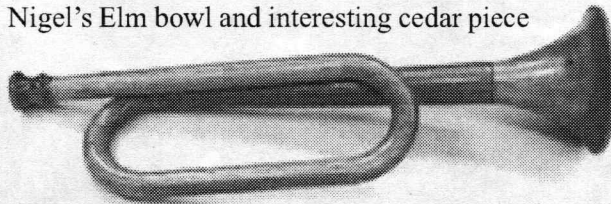
January  
2005



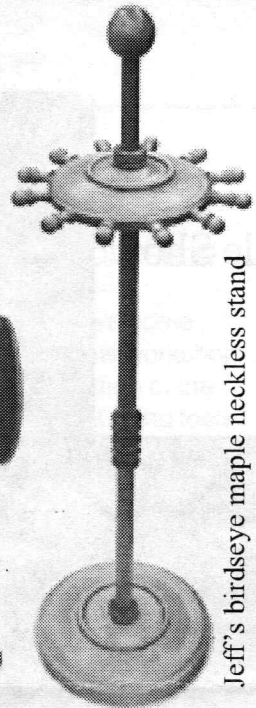
Tilt!  
Bob Sutter's  
clever pencil box



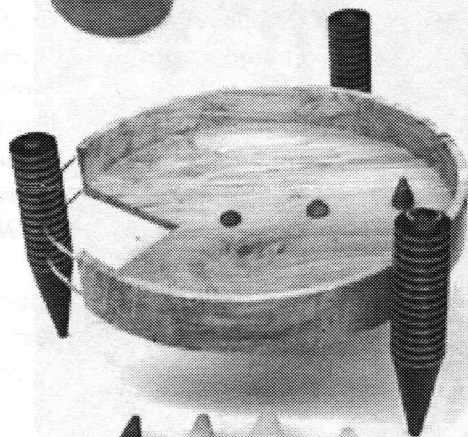
Nigel's Elm bowl and interesting cedar piece



Jim Flannery's oak and spalted maple horn



Jeff's birdseye maple necklace stand

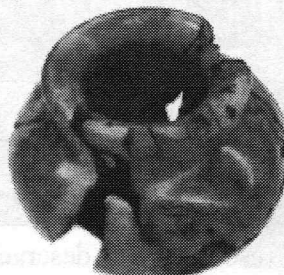
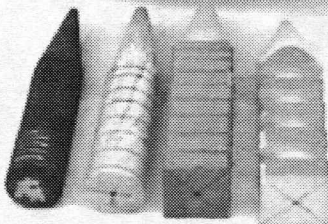


Wally's Judy Ditmer jewelry blanks

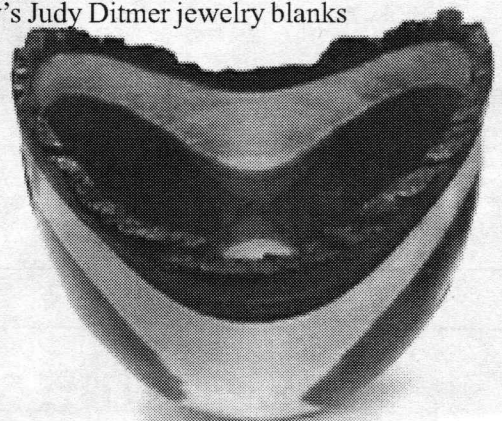


Don Diedrich's  
grapewood candlestick

Andy Osborne's unusual creation with  
experimental leg samples



Ron's Manzanita bowl



Ken's Black Walnut bowl