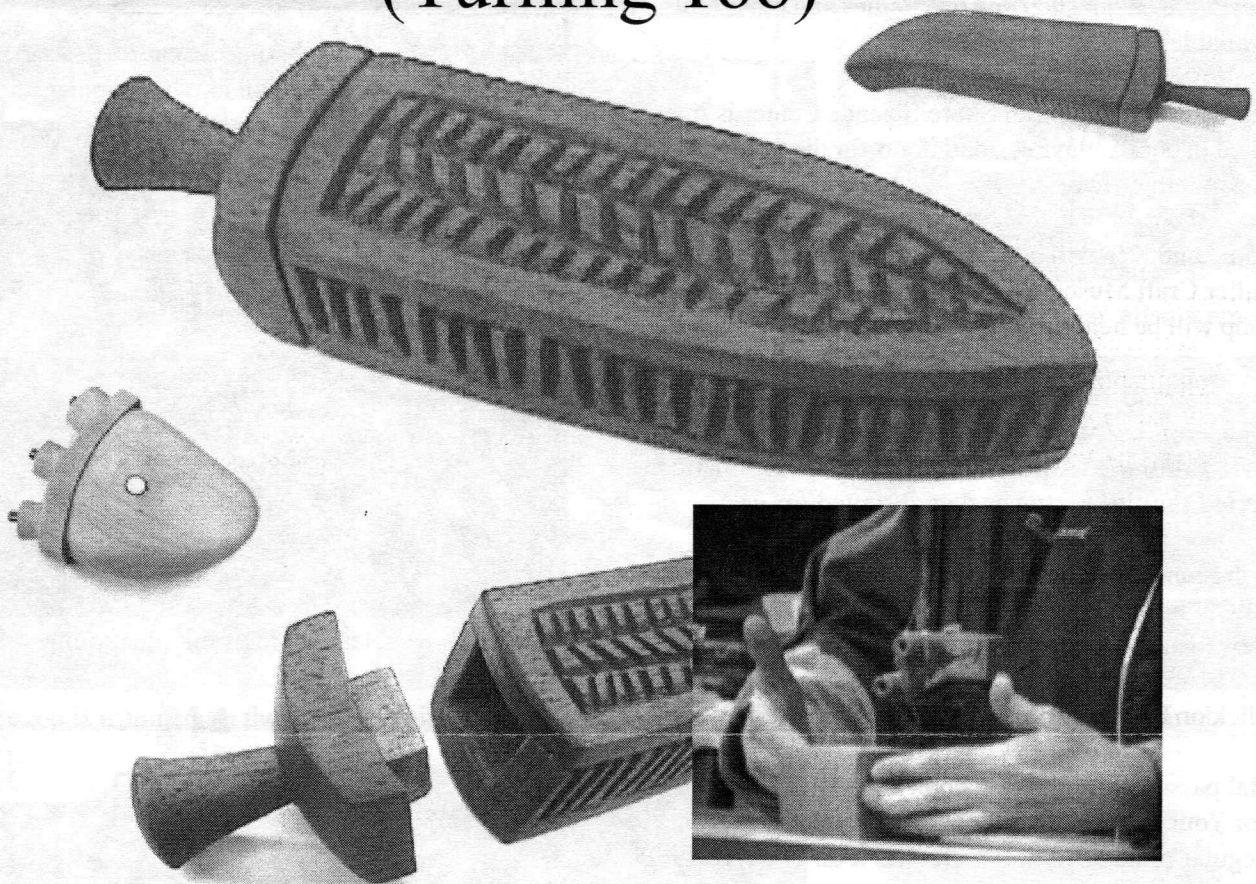


AS THE WOOD TURNS

March 2005

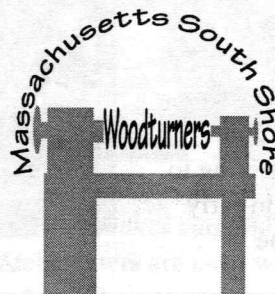
Bandsaw Boxes

On the Cutting Edge with Beth Ireland
(Turning Too)



2005 MSSW Officers

President - Hank Cahill (781) 878-0234
Vice President - Richard Friberg (508) 378-2436
Treasurer - Wally Kemp (781) 871-1390
Secretary - Mal Partridge (781) 843-3883
Librarian - Leonard Mandeville (508-586-7679)
Newsletter - Mal Partridge (781) 843-3883
Web site: <http://www.mssw.sitelinker.org/>



Next Meeting

Tuesday, March 22, 2005, 7:00 P.M.
At Hank Cahill's *Dust Bowl*
Refreshments by: James Weidenfeller
Member Challenge: Bandsaw box
Demonstration: Inside AAW - Angelo Iafrate
Gnome and Dome - Mal Partridge

Meeting Minutes

The meeting was called to order at 7:00 pm at Hank Cahill's Dust Bowl
President's Report and General Business

The meeting was opened by V.P. Richard Friberg as Hank was in the hospital. Guests present: Ed Flynn, Dan Cahill, Cathy Todd and Noreen Francis.

Treasurer Wally Kemp reported \$1270 in treasury.

Andy Osborne supplied copies of an interesting article on sandpaper grades for members interested.

Ken spoke of a Dedham woman whose husband is closing his woodshop and has Lathes and other tools available for sale.

Jeff said that the South Shore Science Center is interested in our displaying small items for display and sale in a month or two.

Wally and Ken will be demonstrating turning at the Fuller Craft Museum Open House. The turning workshop will be held Saturday, March 12th.

Mal reported on an article by Philip Lowe in Fine Woodworking Magazine, April 2005. Philip received the 2005 Cartouche Award for Achievements in American Period Furniture. He has demonstrated for us.

Bob Francis demonstrated Windsor Chair fabrication on NECN N. E. Dream House program. The video can be viewed at: http://www.boston.com/news/necn/shows/ne_dreamhouse/
Click on link: "Before and After: Windsor Chair"

Mal passed around a new book "Woodworking Projects For Your Workshop" available at Costco for \$9.99. Regular price \$29.95, Rockler has it on sale for \$19.95.

News updates: Ken has reported that our application to exhibit at the 50th Annual South Shore Art Center Festival has been accepted. He has volunteered to coordinate the event June 17-19.

Mal has sent a letter to Fuller Craft Museum offering to provide 40-50 pieces for a woodturning exhibit in early 2006. A member of our group (Ken) will also be available for a talk and slide show.

Wally and Ken Demonstrate Turning at Fuller Craft Museum



Wally's colorful tops are popular

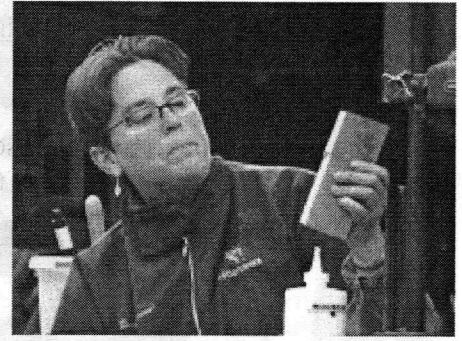
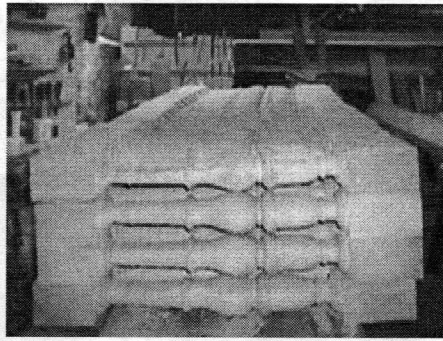
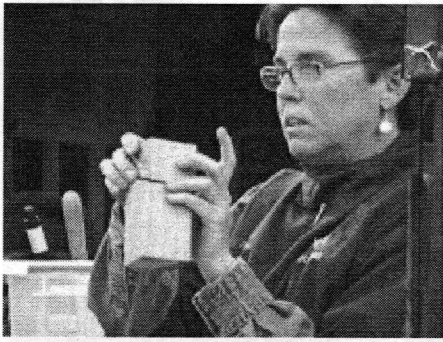


Ken demonstrates spindle turning

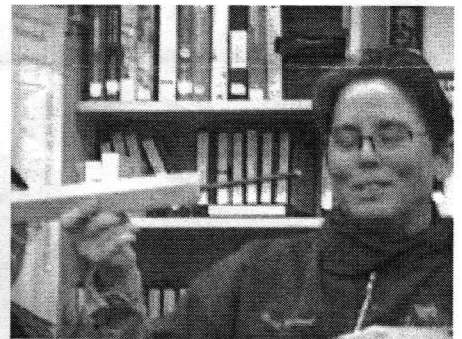
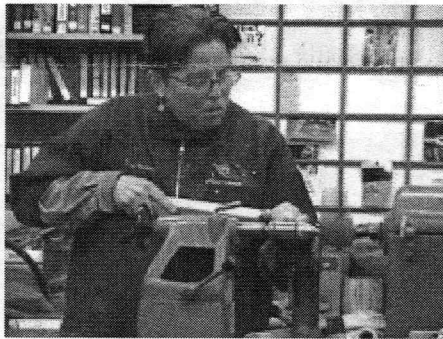
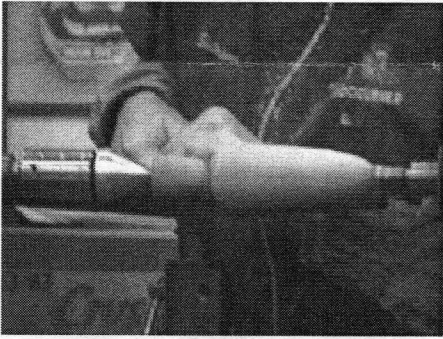


Attendance was much better this year!

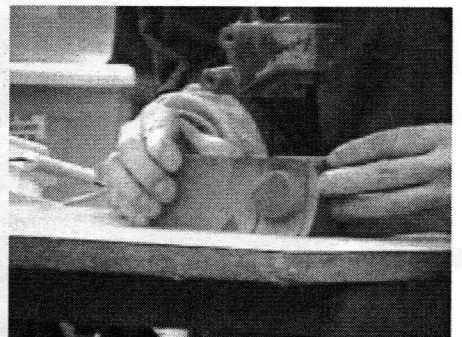
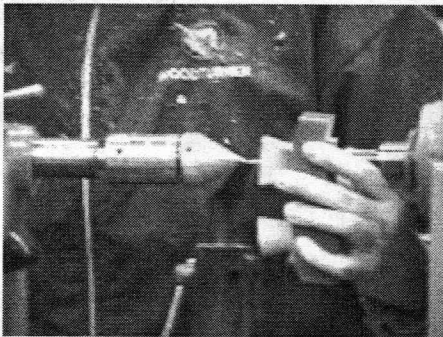
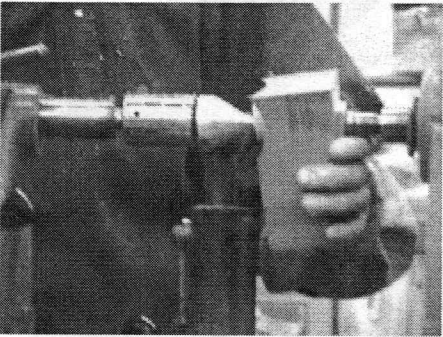
Turning Outside the Box with Beth Ireland



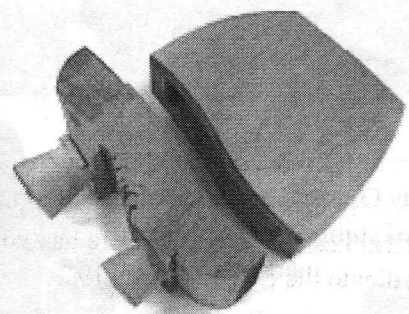
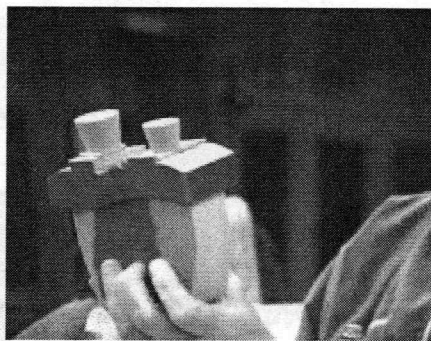
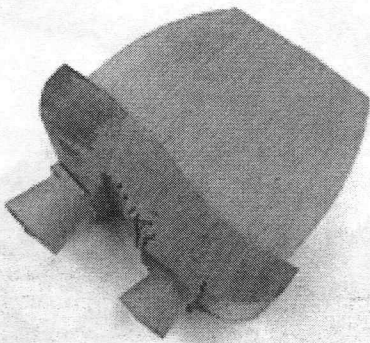
Beth demonstrated making a box using the bandsaw and lathe. She uses stock remaining from turned ballisters.



After the stock is cut & glued to form a box the lid is turned using a gouge & steep angle tool from an allen wrench.



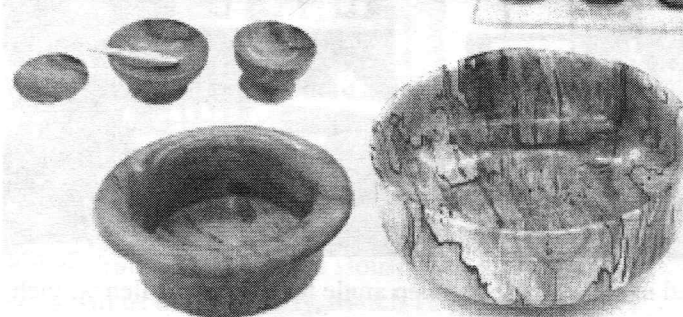
The top is trimmed on the bandsaw with a few decorative cuts. The finished box can be carved if desired.



Beth uses 1/4" hook tooth 4tpi bandsaw blades and makes sure the bandsaw is set up properly. She enjoyed the challenge of using Hank's antique bandsaw. Steb centers are used while turning. She uses Titebond II and III glue. Beth's demonstration was laced with humor and creative ideas, and enjoyed by all!

Show & Tell

February 2005

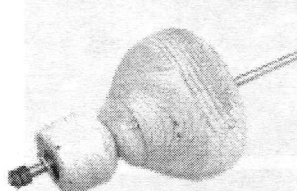


Jeff's olive miniatures, cherry rolled rim bowl and spalted maple bowl

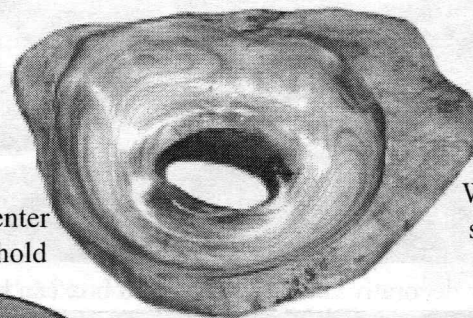
Richard's coffee scoop, maple burl and curly maple piece with miniature hollowed cutoff. Also white painted piece shown above



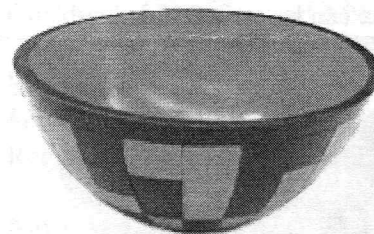
Wally's targa nuts and soup bone miniatures



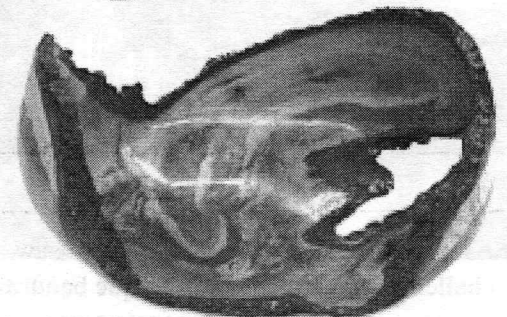
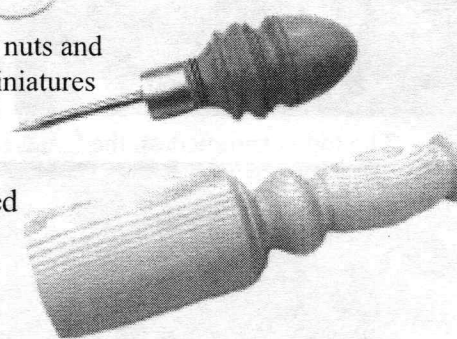
Nigel's chestnut off center piece with mandrel to hold



Jim Weidenfeller's Awl and mallet turned at North Bennet Street School



Andy Osborne's maple bowl, red aniline dye and black marker



Ken's cherry piece and cracks filled with turquoise



Mal's miniatures



Harold's maple and Brazilian cherry piece and white mahogany and ebony piece with pewter inlays