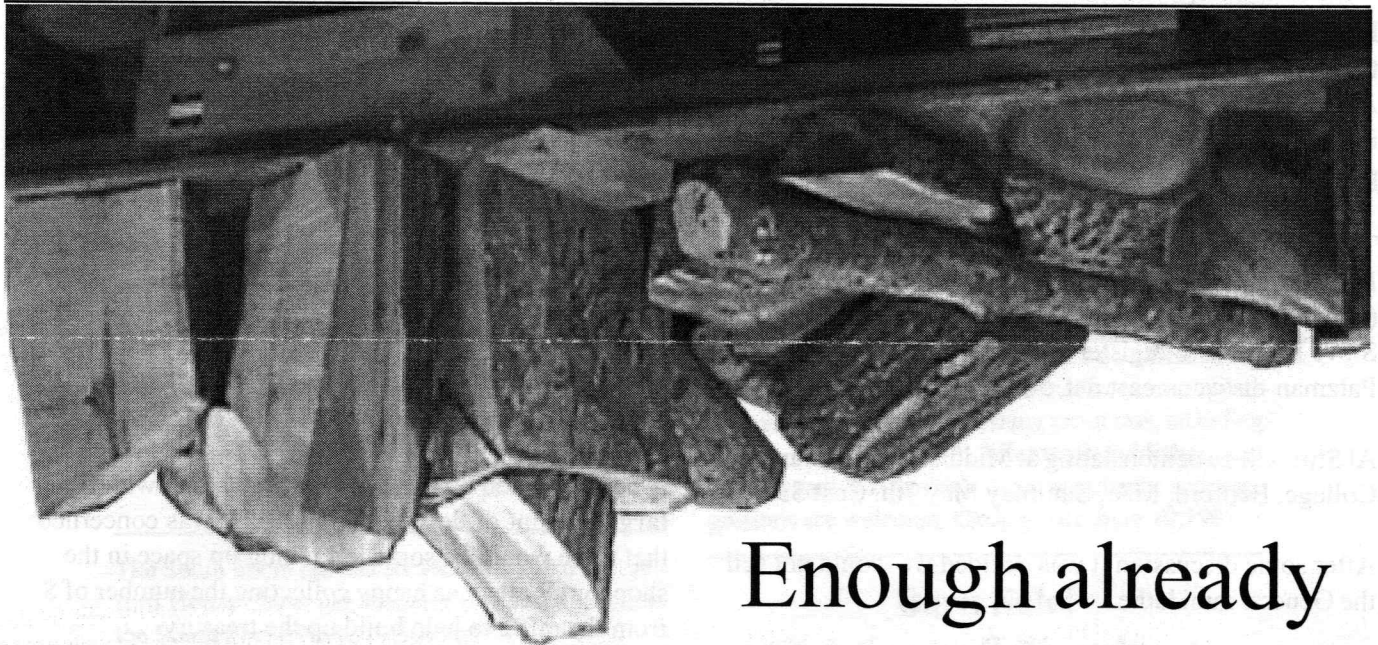


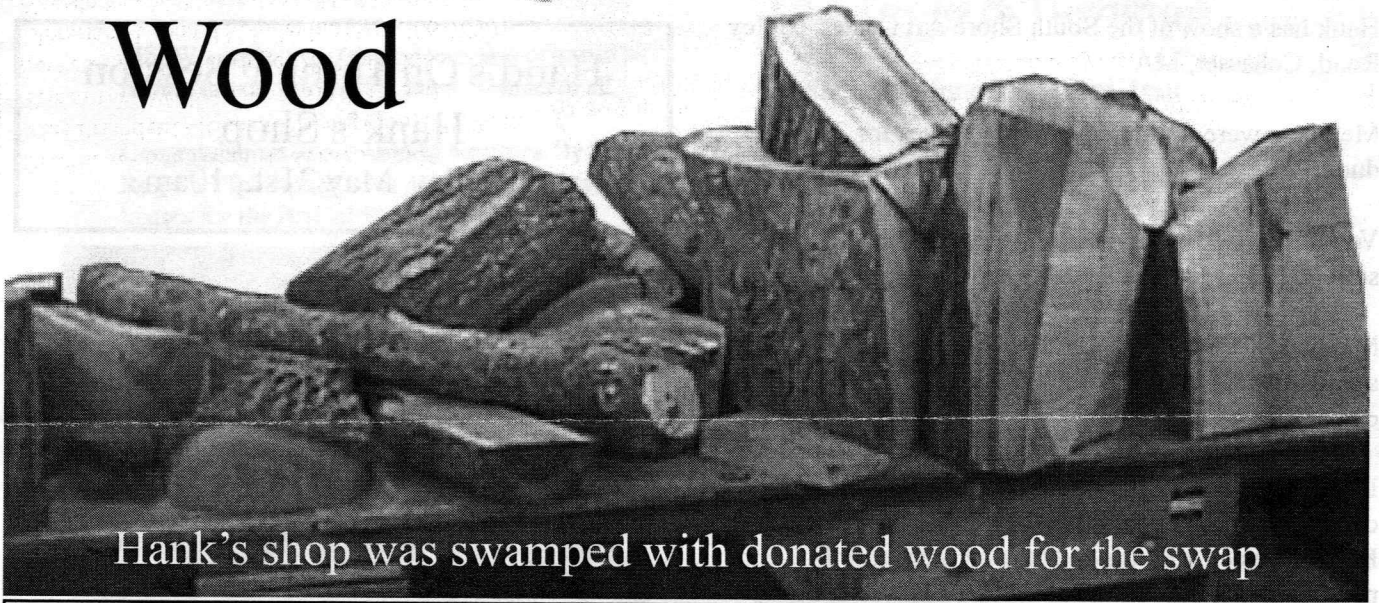
AS THE WOOD TURNS

May 2005



Enough already

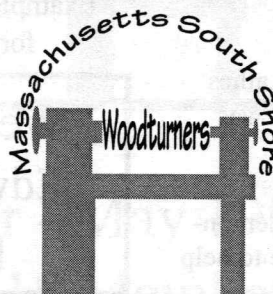
Wood



Hank's shop was swamped with donated wood for the swap

2005 MSSW Officers

President - Hank Cahill (781) 878-0234
Vice President - Richard Friberg (508) 378-2436
Treasurer - Wally Kemp (781) 871-1390
Secretary - Mal Partridge (781) 843-3883
Librarian - Leonard Mandeville (508-586-7679)
Newsletter - Mal Partridge (781) 843-3883
Web site: <http://www.mssw.sitelinker.org/>



Next Meeting

Tuesday, May 24, 2005, 7:00 P.M.
At Hank Cahill's *Dust Bowl*
Refreshments by: Ernie Grimes
Member Challenge: Pail with handle
or Sauna bucket
Demonstration: Irene Gafert from Denmark

Meeting Minutes

The meeting was called to order at 7:00 pm at Hank Cahill's Dust Bowl

President's Report and General Business

Hank received correspondence from Ron Alexander on the AAW Educational Opportunities Grant Committee. Also a letter was received from the agency for AAW insurance. AAW will have three Board of Directors positions available - any volunteers?

The Cape Cod Woodturners are featuring David Ellsworth at a two day demonstration June 11-12, 2005 (Sat -Sun) at the workshop of Wayne Shepard. Contact Steve Patzman to register or for further information: Patzman-dis@comcast.net, 508-432-0665

Al Stirt will be demonstrating at Middlesex Community College, Bedford, MA., Saturday May 7th. Cost \$30.

After some discussion it was decided we would not sell the General mini lathe.

Hank has a show at the South Shore Art Center, Ripley Road, Cohasset, MA.

Members were reminded again that dues for 2005 are due.

Volunteers for future meeting refreshments were solicited and received for May and June meetings.

Mal had additional CD's with Gnome and Dome slideshows available for members who did not receive one at last meeting.

Ed Morey mentioned that Fuller Craft Museum will be cutting trees and wood might be available for turning. Ken suggested we turn objects and present to Museum personnel if we do get wood from them. We don't know just what type of wood is available as yet.

Mal received a quote of \$474 for two Jet Mini Lathes from Beaver. Due to lack of funds at this time it was decided we would put off purchase.

It was agreed we would invite Irene Gafert to demonstrate at the May meeting with a \$5 member fee to help cover cost.

This was a result of the treasurers report that our treasury has only \$839 with commitments for the Cohasset Art show and other expenses. Ken suggested that we turn tops for sale to kids to help pay for \$260 fee for booths at the Cohasset Art Show.

Lenny the Librarian reported that two new videos have been added to library: Son of Skew and Vessels of Allusion. He also asked about Freedom Tree pieces. Ken and Jeff reported they have turned wet.

There will be a hand's on turning session at Hank's shop Saturday, May 21st at 10 am.

Ken and Wally will be conducting another turning class at Fuller Craft Museum on May 14th.

Show and Tell was held with some interesting pieces shown and techniques discussed.

A book donated by Ernie was raffled along with a **large** amount of donated wood. Hank was concerned that there would be some left taking up space in the shop, but Wally was happy collecting the number of \$ from the raffle to help build up the treasury.

**Hand's On Turning Session
Hank's Shop
Saturday, May 21st., 10am**



Examples of Pails with handle and Sauna buckets for Member Challenge - small size OK

**Welcome New Members
Edward Flint East Bridgewater
Denise Cahill Brockton**

AS THE WOOD TURNS

May 1997

Members Win Awards at 1997 Bird House Show and Auction

1st Place Woodworking Professional
Roger Hill for "Tea House"



3rd Place Most Creative
Wally Kemp for "Fred"

The South Shore Habitat for Humanity held it's 1997 Bird House Show and Auction May 2nd thru 4th at the South Shore Plaza, Braintree, MA

MSSW members contributed a number of turned bird-houses to this worthwhile event. Thanks to all.

Congratulations to our winning members. By the way, Roger's "Tea House" was one of the final two bird-houses for the Best of Show award!



We're off to a great start!

FIRST ISSUE OF MSSW NEWSLETTER

Welcome to the official publication of the **Massachusetts South Shore Woodturners**. The editor looks forward to receiving articles by members and guests for inclusion in the newsletter. Submit typed or printed copy for scanning, as well as photos or sketches. Text and graphics files on PC floppy or Zip discs appreciated. The format may change from time to time as your editor experiments with various desktop publishing programs, including Adobe PageMaker 6.5, Microsoft Publisher, and PageStream 3.2 (Amiga). Your comments and suggestions are welcome. Closing date June 10, 1997.

Barn Sale! Old Tools & Turnings

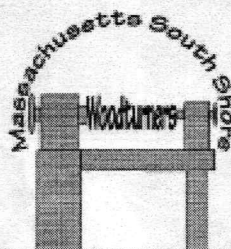
Saturday, June 7th 10am-4pm

Hank Cahill's Shop
409 Washington Street
Abington, MA

Members - Bring your friends - Notify the neighbors
&
Don't forget to bring Old Tools and/or Turnings
to the May Meeting for the Sale

1997 MSSW Officers

President - Hank Cahill (617) 878-0243
Vice President - Gary Levine (617) 843-3695
Treasurer - Wally Kemp (617) 871-1390
Secretary - Al Vandam (617) 545-1153
Librarian - Ray Cartier (508) 759-3422
Newsletter - Mal Partridge (617) 843-3883



Next Meeting

Tuesday, May 27, 1997
7:00 P.M.
At Hank Cahill's *Dust Bowl*

Demonstration:
Making Turned Boxes - Ray Cartier

Our First Newsletter - May 1997 - 96 issues to date!
18 Members

Show & Tell

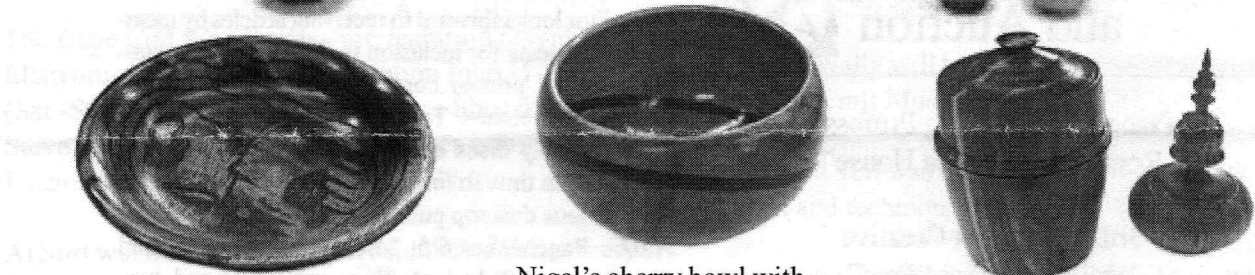
April 2005



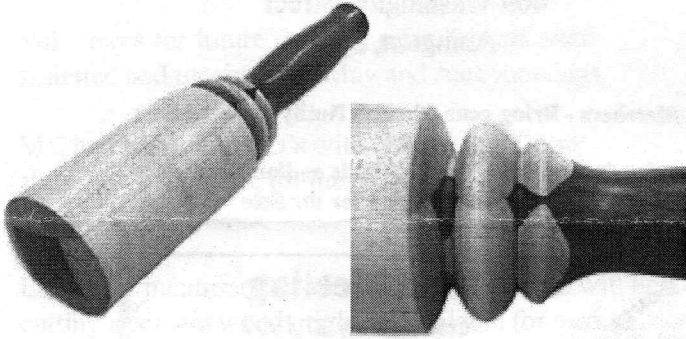
Mike Veno's quilted ash bowl painted with alcohol tinting dye

Nigel's cherry bowl with purpleheart segment

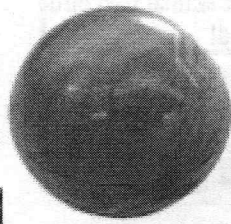
Sidney's red cedar and ceiba wood boxes



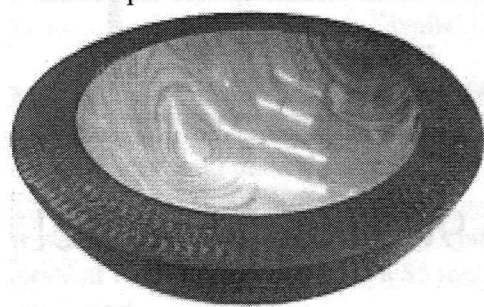
Jeff's padauk and cherry egg boxes, myrtle and spalted maple boxes, and quilted maple ball box



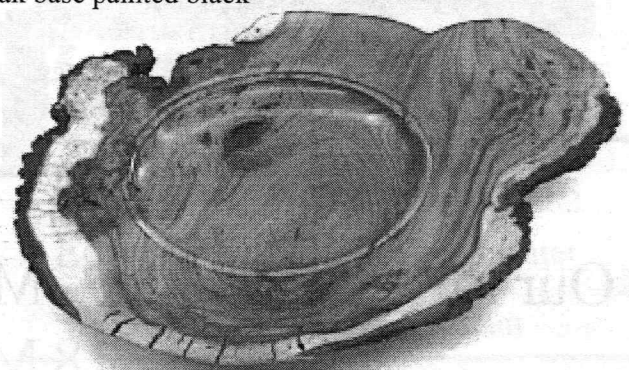
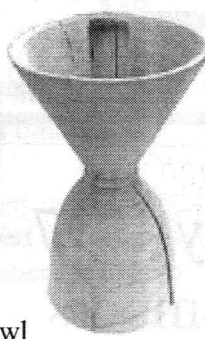
Jeff's member challenge walnut and maple carvers mallet



Ken's yard sale mystery wood crotch mounted on oak base painted black



Andy's cherry textured and torched bowl and cherry work in progress



Wally's large cherry burl piece with filled checks