

---

# AS THE WOOD TURNS

---

November 2005

---

## Burlesque

Presenting the Team of Keller & Howe



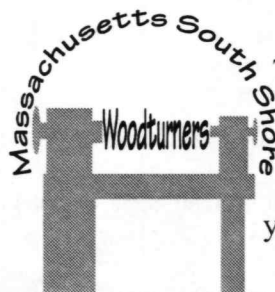
Jeff Keller and Nigel Howe standing next to a massive red oak burl adjacent to Accord Pond prior to cutting the remains of the tree down. It should be noted, there was only about seven feet of the tree left above the burl. The top had been struck by lightning some years ago. The team began by placing a step ladder against the burl and, using a chain saw, cut the top of the tree above the burl away. It fell between two others blocking the burl from rolling into Accord Pond ( a stroke of good luck as it turned out). In the photo, the burl is intact but the tree is hollow. The team has images of turning some fine pieces from the burl.



It took the team a little while to cut through the burl. After cutting lengthwise, they made cuts across from left to right. Nigel carried it piece by piece up the hill to the base of the water tower where the team was allowed to park their truck by workers from the Hingham Water Department's management company. Jeff and Nigel are standing in snow (believe it or not) with the burl cut into 13 pieces in Nigel's truck. It was a good thing they had permission, there are several motion detectors on the water tower that alert the Hingham police within seconds of someone trespassing! The team would not want to be BUSTED FOR A BURL!

### 2005 MSSW Officers

**President** - Hank Cahill (781) 878-0234  
**Vice President** - Richard Friberg (508) 378-2436  
**Treasurer** - Wally Kemp (781) 871-1390  
**Secretary** - Mal Partridge (781) 843-3883  
**Librarian** - Leonard Mandeville (508-586-7679)  
**Newsletter** - Mal Partridge (781) 843-3883  
**Web site:** <http://www.mssw.sitelinker.org/>



### Next Meeting

Tuesday, November 22nd, 2005, 7:00 P.M.  
At Hank Cahill's *Dust Bowl*  
Refreshments by: Mal Partridge  
Member Challenge: Thanksgiving (a piece you consider a turkey) or Christmas ornament  
Demonstration: TBD

## Meeting Minutes

The meeting was called to order at 7:00 pm at Hank Cahill's Dust Bowl

### President's Report and General Business

Hank received the following correspondence:

Two CNEW Newsletters, Letter from Irene Grafert, and Craft Supplies Sale Item Specials.

A request from AAW Headquarters for a donation for AAW clubs Katrina Emergency Relief Fund. It was agreed we would donate \$100.

AAW rules for the 2006 AAW Kentucky Symposium Collaborative project.

The Brockton Enterprise had a front page article about our Liberty Tree turnings and a picture of Nigel with one of Jeff's liberty tree bowls. The article could have used some editing, but the publicity doesn't hurt.

Treasurer Wally Kemp reported \$1388 in Treasury.

Lenny the librarian reported on condition of videos and books and reminded new members of their availability. He had some large castors available free to members.

Lenny was recognized by the members for the great job he has done in starting and organizing the Liberty Tree Project. Thanks, Lenny and to all who contributed time and turnings.

Bob Francis talked about the Fine Furnishing Juried Show in Providence.

Jeff Keller has agreed to manage our AAW Grant.

Hank asked about Angelo's election, but no one had any information at this time.

Our annual demonstration at Audubon Farm Day went well. Special thanks were given to Ernie for his efforts in bringing his treadle lathe each year and teaching the children what turning is all about.

Wally will have Anchor Seal Wax at the next meeting for \$10/gal. - Bring your own empty container. Ken mentioned that he cuts it 50/50 with water per Al Stirt.

Members who attended Totally Turning 2005 in Albany, NY. reported on the demonstrations. There were good sessions but long walks! Hank enjoyed Keith Tompkins *Woodturning Form and Design* based on the Golden Ratio. Andy Motter, a CNEW member, demonstrated using his Butternut Brand of turning tools. Andy Osborne enjoyed Andi Wolfes demonstrations. Photographs of the instant gallery were supplied by Jeff Keller. Six of our members attended.

Ken will be conducting a TOPS AND DREIDELS turning class at Fuller Craft Museum, Sunday, December 11, 12-4 PM.

Our exhibit at Fuller Craft Museum is scheduled for January 28, 2006 - April 2, 2006. An opening reception at Fuller will be held Jan 29, 2006 2-5PM. All are invited. No admission fee.

Members exhibiting:

Jan 19-22, 2006 Turners should drop off pieces at Fuller with 1 completed exhibition form for each piece submitted. Hours are 10-5. Please coordinate with other members to drop off pieces if you are not available during these dates or times.

The above information was e-mailed to members along with exhibit form file. Mal will have copies of the forms at November meeting. Contact Ken Lindgren if you have any questions. New members are welcome to exhibit pieces.

Our lathes and tools are now color coded thanks to Dave and Hank. Will it help? Hope so!

Bob Sutter mentioned Japanese Ceramics exhibit at MFA. He also talked about the Rude Osolnik exhibit at Fuller.

A hand's on Saturday was scheduled for November 12.

**Welcome New Members**

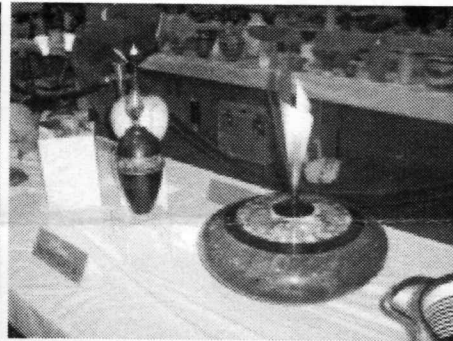
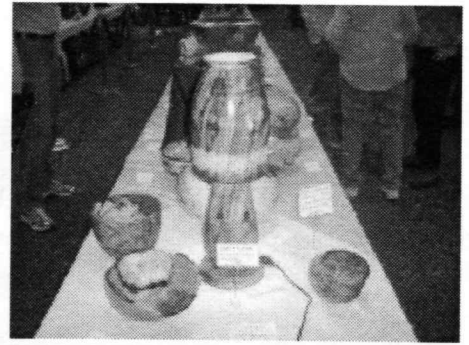
**John Duggan from Brockton**

**Dan Katz from Sharon**

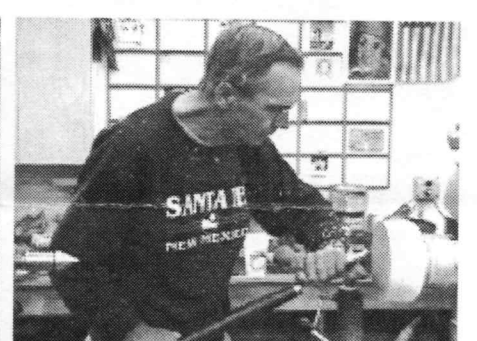
**Michael Zupkofska from**

**Rockland**

2005  
Totally Turning  
Symposium  
Albany, NY



Photographs by Jeff Keller

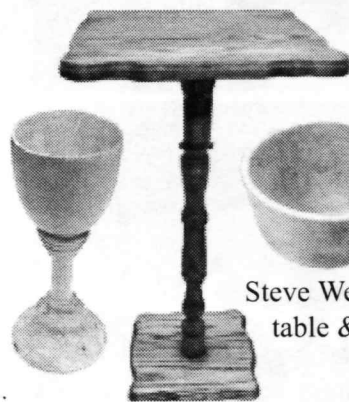


October 2005 Hand's On Saturday



# Show & Tell

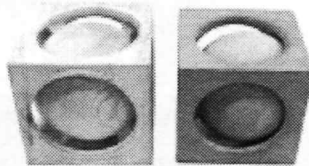
October 2005



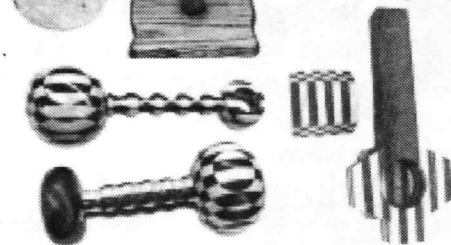
Steve Weidenfeller's oak table & maple pieces



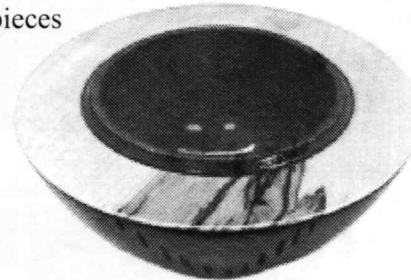
Bob Allen's curly maple box & arborvitae vase



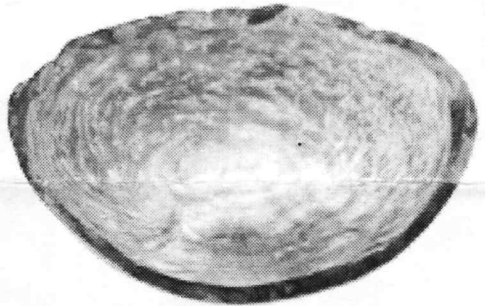
Mike Veno's cherry lamp, captive balls & top with rimmed base



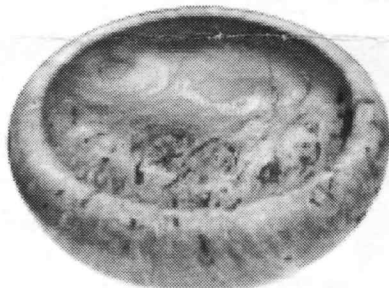
Bob Richard's laminated maple & purple heart rattles - BB's inside



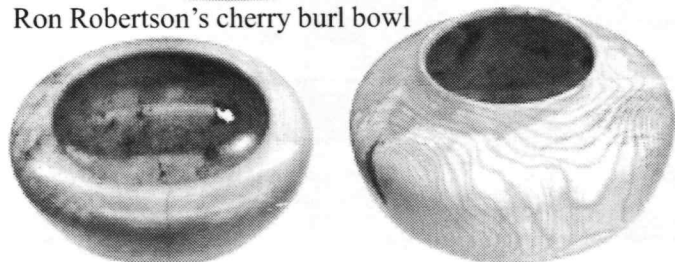
Andy Osborne's silver maple bowl painted black & red with carved detail



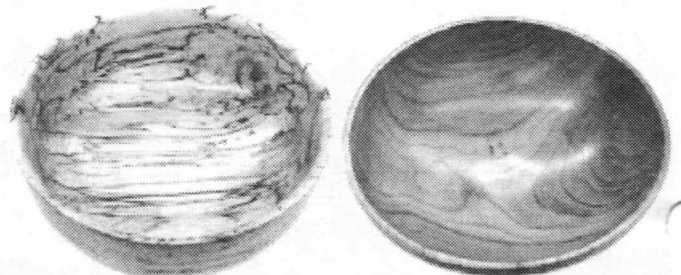
Wally's two bowls from giant white pine burl - sanding a problem



Ron Robertson's cherry burl bowl



Nigel's cherry burl bowl & rippled ash bowl



Jeff's spalted maple bowl & cherry bowl