

# AS THE WOOD TURNS

September 2005

## Remembering Keith Rowley Woodturning Weekend With Keith Rowley and Peter Gill

By Mal Partridge

A Woodturning Weekend was held April 23-25, 1999 at the WOOD-CRAFT store in Woburn, MA. The events included a Book Signing on Friday, Turning Demonstrations on Saturday and Q & A Session on Sunday. However Keith demonstrated all three days.

Store personell set up the new Nova 3000 lathe in the showroom and had many turning blanks on hand. A tool grinder was available for Keith's use in the shop area. A Oneway Stronghold chuck was supplied as needed. A small lathe was also set up for his use. Chairs were arranged so that everyone had a excellent view of the turning action, although when there were fewer people they stood around the lathe for a closer look. The interaction with Keith was great!

I spent all three days watching, learning, talking and taking digital images of the proceedings. Peter Gill, Managing Director of Robert Sorby, Sheffield, England, who sponsored Keith's demonstration tour, after reviewing our MSSW newsletters commented that they were the best he has seen in all his travels.

Robert Sorby has 45 employees, 40 in manufacturing and five in the office. Most of their products are designed and produced in house including lathes, woodturning and carving tools and other woodworking supplies. The ash wood for the tool handles comes from USA and are mostly turned on an automatic lathe at a rapid rate.

Peter promised to send a video for our groups use. A week after we met an Airmail package arrived from England with three excellent videos! *Starting Out Woodturning*, ideal for novices, *Decorative Techniques*, aimed at the intermediate turner and *Metal Spinning* as seen through the eyes of a woodturner. A letter of thanks from MSSW members with picture montage of his and Keith's visit to Woodcraft has been sent.

Those who did not attend missed an opportunity to see one of the world's best professional woodturners and a really likeable gentleman. He writes and types his books himself, no ghost writers. As a former policeman in the CID for 20 years he knows how to write reports in detail and this has helped him in explaining correct and understandable turning procedures.

Keith served his early days in the joiner's shop at a coal mine in South Derbyshire and had a 'love affair' with woodturning, turning newels, balusters, chair and table legs, etc. His father bought him a Coronet lathe for use at home and the lathe is still in use today almost 50 years later. In the late fifties the demise of the coal industry forced him to secure a job with the Nottingham City Police. Since leaving the police department he has been turning and teaching professionally.

His book *WOODTURNING A Foundation Course* is used throughout the world as the reference for teaching woodturning. The artwork, the best in any turning book, was done by a draftsman from Rolls-Royce. When the book first appeared he received a call from Mike Darlow, from Australia, complaining that his scientific method of turning was not used in the book!

Keith believes that learning to turn between centers first establishes the fundamentals for all turning. He had a young fellow who had never turned producing beads and coves in no time with no catches.

He used a handy drive center called a *Stebcenter*, made in U.K. and available from Craft Supplies USA, which is excellent for spindle turning as you can examine the work without stopping the lathe, due to a spring loaded center point. You only need to make a locating hole on each end of your stock to begin. See the description in the Craft Supplies Woodturners Catalog 1999 which also features Keith's projects and book on the cover.

Keith turned a few long-stemmed goblets and earring stands shown in his projects book as well as going over the fundamentals and answering questions. The longest thin stem goblet he has made in England is over two feet. To hold the goblet at the tailstock while turning the stem he uses a wad of toilet tissue and wooden plug in the inside of the cup. Brand unknown!

The pictures tell the story and show Keith in action. He was an interesting and likeable person willing to help all those who asked. He personally ground a spindle gouge I purchased to his preferred shape. His sense of humor enhanced his presentation. A gentleman turner who will be long remembered, one willing to drink a toast from his turned goblet to all the woodturners present, Chips!

### 2005 MSSW Officers

**President** - Hank Cahill (781) 878-0234  
**Vice President** - Richard Friberg (508) 378-2436  
**Treasurer** - Wally Kemp (781) 871-1390  
**Secretary** - Mal Partridge (781) 843-3883  
**Librarian** - Leonard Mandeville (508-586-7679)  
**Newsletter** - Mal Partridge (781) 843-3883  
**Web site:** <http://www.mssw.sitelinker.org/>



### Next Meeting

Tuesday, September 27, 2005, 7:00 P.M.  
At Hank Cahill's *Dust Bowl*  
Refreshments by: Edward Morey  
Member Challenge: Acorn - any size  
Demonstration: Ken Lindgren  
You'll be bowled over!

## Meeting Minutes

The meeting was called to order at 7:00 pm at Hank Cahill's Dust Bowl

### President's Report and General Business

Guests present were Jane Cadman from London, Earl Powell from Winchester and Jae Ewart from Abington.

Hank reviewed mail received from craft fairs including newsletters from woodturning groups.

26th Annual Arts & Crafts Festival,  
Fontbonne Academy, Milton, MA  
November 25, 2005, 5pm - 8:30 pm, 26, 10am - 3:30 pm

Abington 5th Annual Lions Club Fall Festival  
Noon-4pm Sept. 25, 2005 - Rt. 58 Griffins Dairy - \$30  
space fee - Contact Debbie Taylor 781-982-9886.

The Plymouth Guild Inc. 38th Annual Juried Art Show -  
Under the Tents at the Plymouth Public Library -  
September 17-21, 2005.

The South Shore Natural Science Center, Norwell, 29th  
Annual Corn Festival, Saturday, September 17th from  
10 am to 4 pm. Rain date Sunday. Members in our  
booth: Jeff Keller, Rich Friberg, Jim Flannery, Mike  
Wells, Bob Allen, and Sid Katz.

Mal had member sign up sheets for 2006 Fuller exhibit.

He also passed around a folder with turnings and  
articles by Eli Avisera, a wood turner from Jerusalem.  
Eli's web site: <http://avisera.co.il/>  
Email: [avisera@eli.name](mailto:avisera@eli.name)  
Eli would be a great demonstrator when in the U.S.

Wally reported \$1127 in treasury.

Lenny the Librarian reported things are normal and  
would have a DIY.com turning video at next meeting.  
Lenny requested that Freedom Tree pieces be brought  
to the September meeting for distribution.

Andy Osborne reported on a meeting at Angelo's to  
organize a 2007 Woodturning Symposium in Eastern  
New England sponsored by regional clubs. Name  
turners, local turners and vendors would participate.  
Volunteers are needed, 4-5 per club. A location selec-  
tion committee needs to be set up. A fee of \$100 for  
the weekend is proposed. It is estimated that 200 would

sign up. Any profits would be shared by participating  
clubs. Members interested in participating please  
contact Andy Osborne or Hank.

Ken reported on our Fuller Craft Museum exhibit. We  
need 75 to 100 pieces produced by all skill levels. Our  
list of turnings is due for submission October 25th, 2005.

## Important Notice

Send or give your list of turnings and details to Ken as  
soon as possible. If our group cannot meet the number  
of pieces required, Ken will have to open the exhibit to  
other groups. Many of our members have worked hard  
to get this exhibit to promote MSSW and our turners -  
get those lists in!

It was agreed that Wally would buy additional tail stock  
centers as needed.

Ernie reported on the Mt. Sunapee Festival in N.H. He  
had his treadle lathe there for 3 days.

Jeff reported on his demo at Fuller Craft Museum open  
house. It was such nice weather - attendance was low.

As requested, Mal has Emailed the MSSW membership  
list to members. Those without Email can pick up a  
copy at the next meeting.

Note: Our AAW grant request for \$500 was granted.  
Hank will have details at the September meeting.

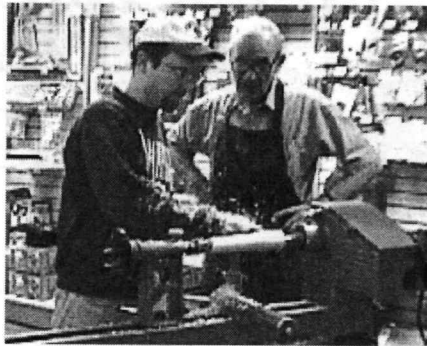
A silent auction was held for an AMT lathe. It was  
really silent - no bidders!

**Attention Lenny:** Ron Robertson Emailed Mal that  
David Springett's book *Woodturning Wizardry* is  
currently out of print. Used copies are selling for as  
high as \$300. When Ron went to Hank's to check on  
our copy he found that the book has been checked out  
since September 2003 and the video since May 2005.

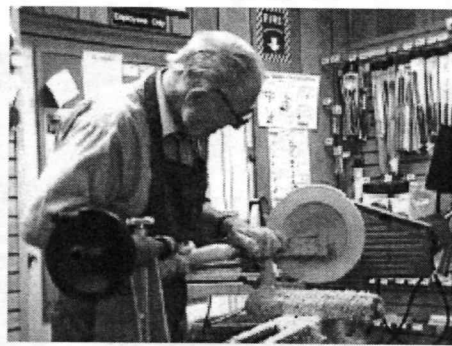
## Welcome New Members

Earl Powell from Winchester  
Jae Ewart from Abington

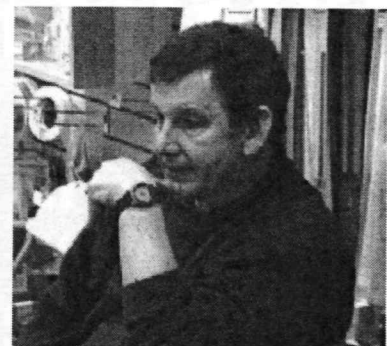
# Woodturning Weekend with Keith Rowley and Peter Gill



Keith instructing new turner



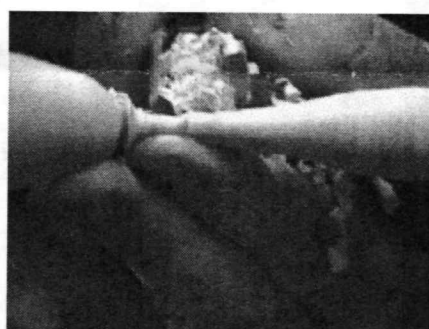
Finishing dish on Nova lathe



Peter Gill, Managing Director Robert Sorby



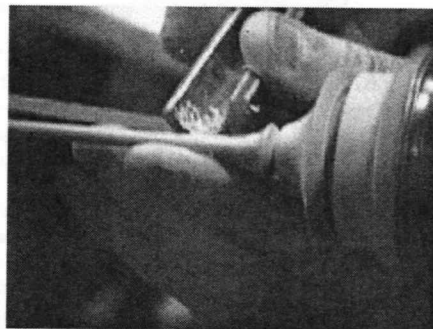
Finishing cut on goblet cup interior



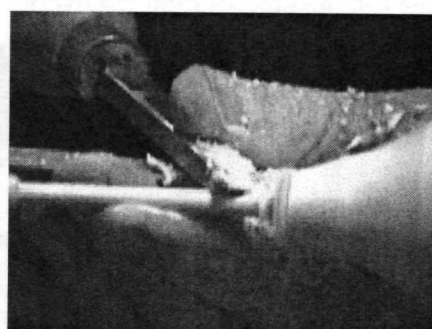
Starting stem with roughing gouge



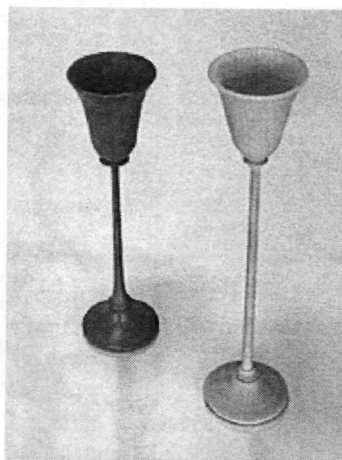
Detailing cup base with small gouge



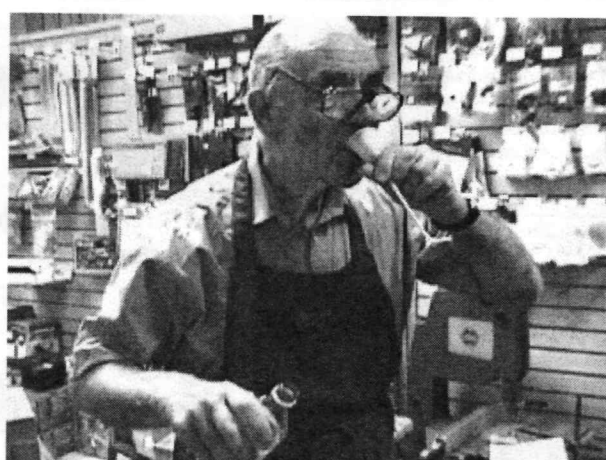
Reducing stem diameter with roughing gouge and completing with skew



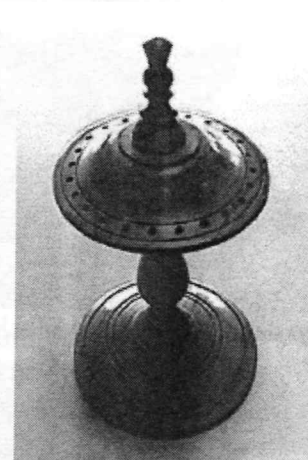
Detailing base with gouge



Long Stemmed Goblets



Cheers! To a job well done



Rowley earring stand

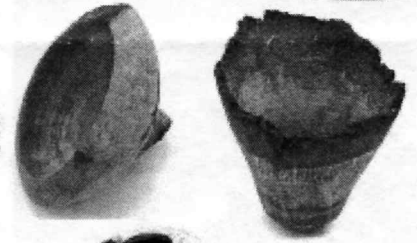
WOODCRAFT, Woburn, MA April 23-25, 1999

Photos and titles by Mal Fartridge, April '99

Keith Rowley died 28 June 05 at his home in Nottinghamshire, England

# Show & Tell

August 2005

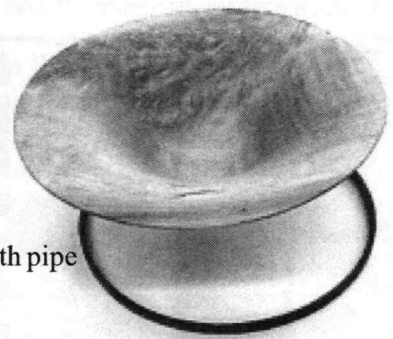
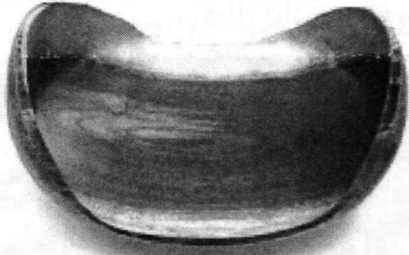
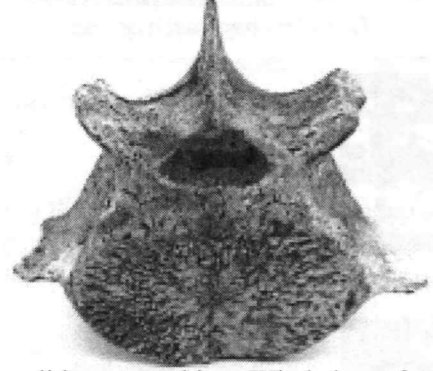


Wally's bowls: Oak Burl from Bob Sutter, White Pine Burl and pieces from left overs.



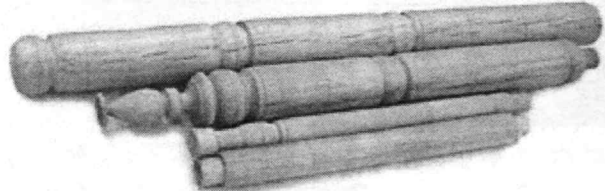
Jeff's Ash & Oak box, Maple box, Arborvitae bowl and Cherry light pull

Sid's Silver Maple & Cherry lidded boxes with light pull

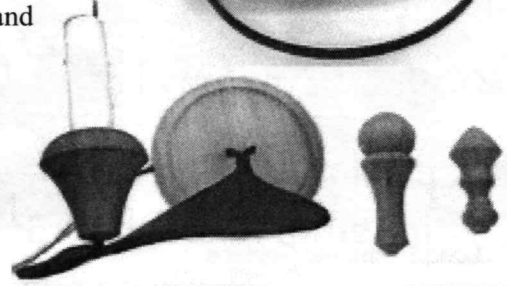


Nigel's Walnut bowl and Birch bowl with pipe slivers metal stand

Ken did not turn this, a Whale bone from trip to Alaska



Lenny Langvin's full size pieces for chair reproduction & model



Mike's wall sconce lamp ideas and light pulls