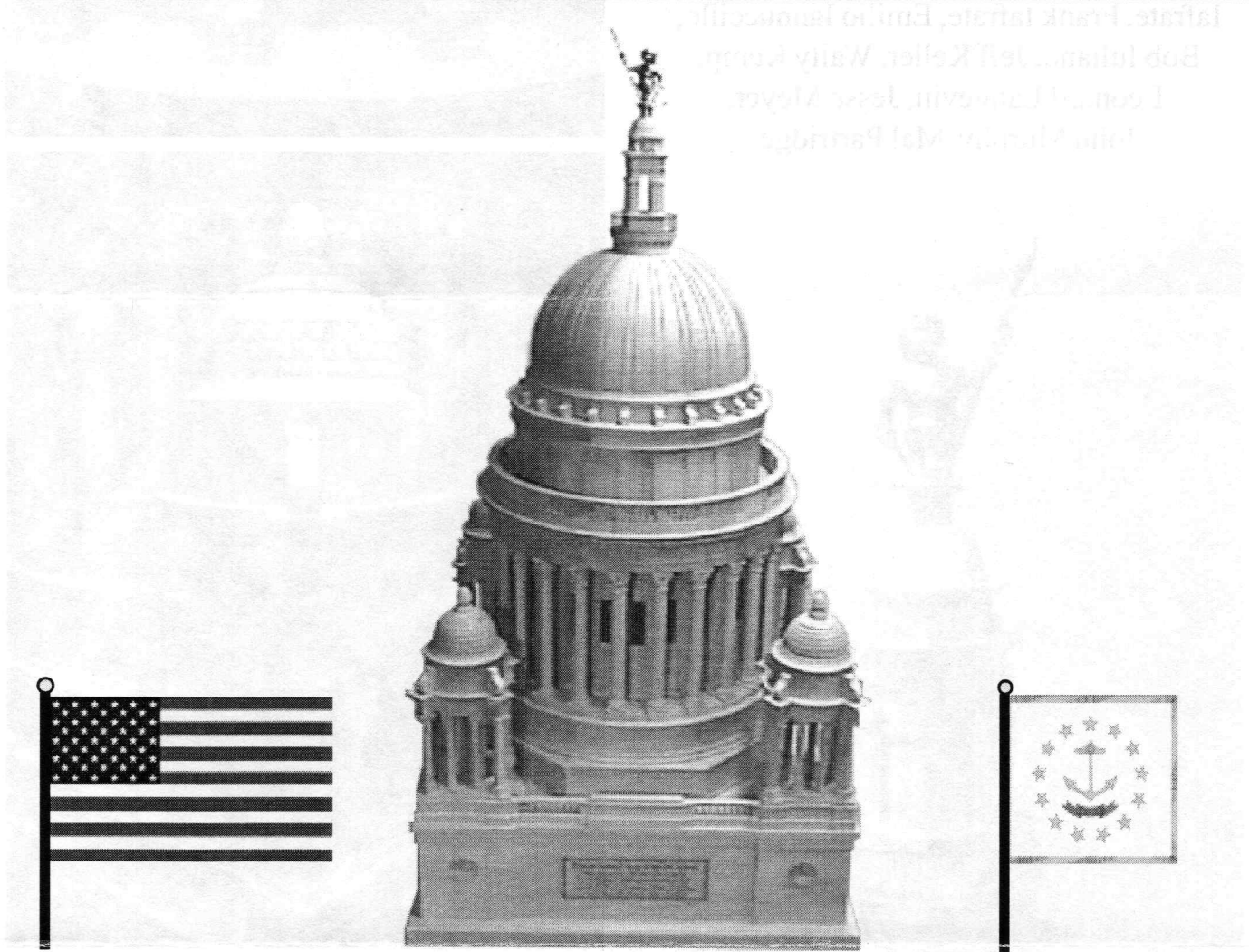

AS THE WOOD TURNS

AAW Symposium 2002 Special Edition



Rhode Island State Capitol Dome

2002 MSSW Officers

President - Hank Cahill (781) 878-0234
Vice President - Felix Troiano (781) 749-1713
Treasurer - Wally Kemp (781) 871-1390
Secretary - Mal Partridge (781) 843-3883
Librarian - John Murphy (781) 834-1179
Newsletter - Mal Partridge (781) 843-3883



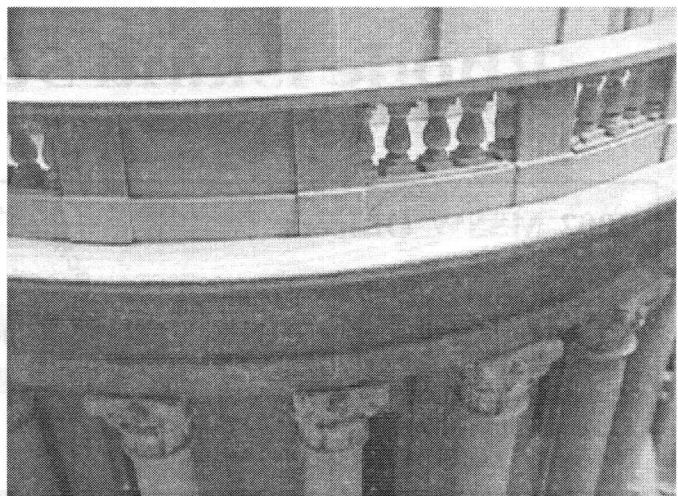
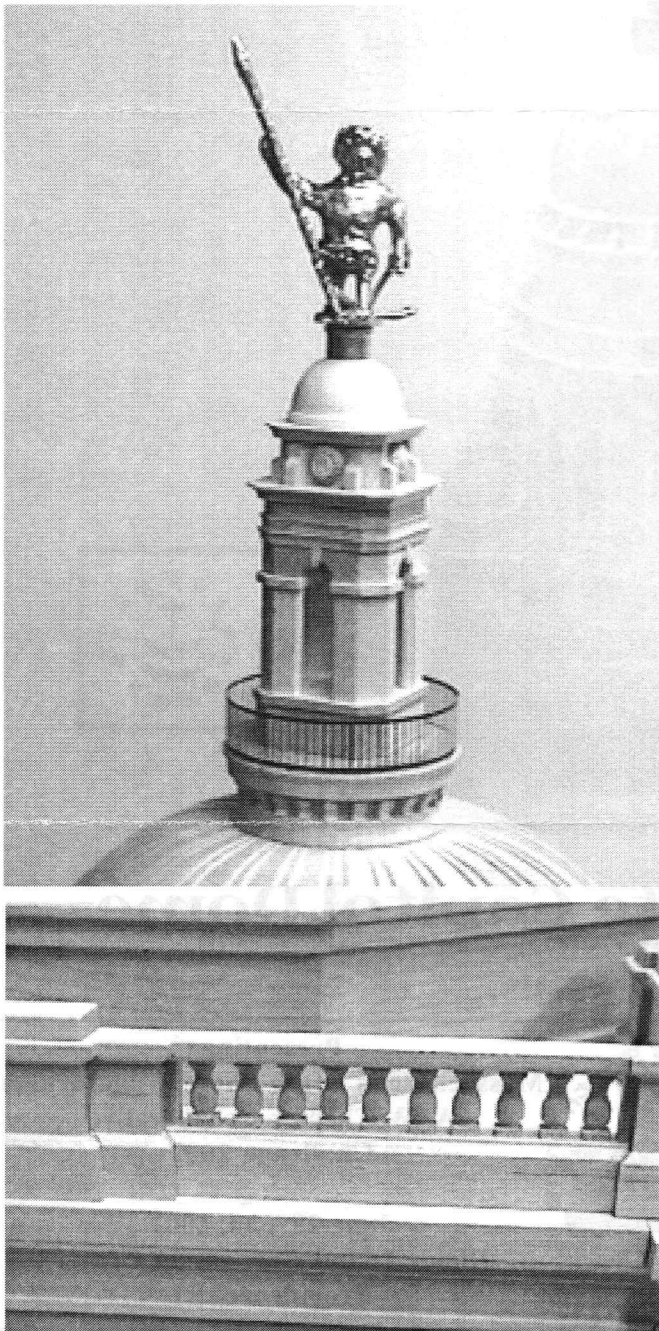
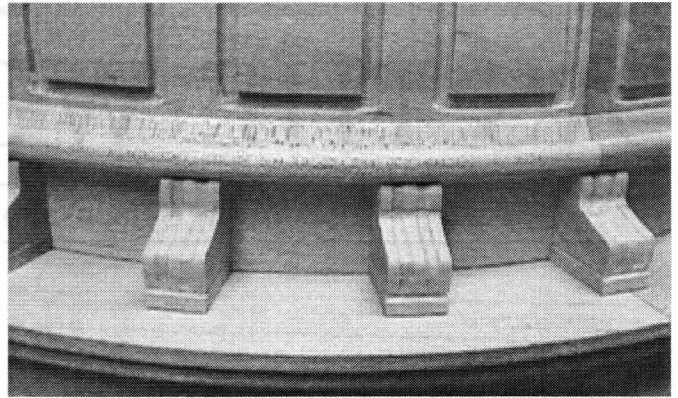
Presenting
Massachusetts South Shore Woodturners
AAW Chapter Collaborative
Challenge 2002

June 28 - 30, 2002
Rhode Island Convention Center
Providence, RI

Fabrication Team

14 Talented Craftsmen

Hank Cahill, Bernie Feinerman,
Richard Friberg, Ernie Grimes, Angelo
Iafrate, Frank Iafrate, Emilio Iannuccillo,
Bob Iuliano, Jeff Keller, Wally Kemp,
Leonard Langevin, Jesse Meyer,
John Murphy, Mal Partridge





**Rhode Island State Capitol Dome
Technical Winner
AAW Chapter Collaborative Challenge 2002
Massachusetts South Shore Woodturners**