

---

# AS THE WOOD TURNS

---

April 1999

---



(Actually 24 Balls)

Members were on a roll and found many ways to turn a ball. Roger Hill got so turned on that he showed up with a box of 14 balls of all sizes! Jesse Meyer turned 3 at a time, like a shish ke-bab! Mal Partridge found an article on turning spheres in a 1935 Delta Handbook which showed a number of interesting methods. Ernie Grimes showed and discussed tools, chucks, templates and fixtures. Ball and all, the monthly member turning challenge was a real success.

## 1999 MSSW Officers

**President** - Hank Cahill (781) 878-0234  
**Vice President** - Gary Levine (781) 843-3695  
**Treasurer** - Wally Kemp (781) 871-1390  
**Secretary** - Charles Rosen (781) 848-6589  
**Librarian** - John Murphy (781) 834-1179  
**Newsletter** - Mal Partridge (781) 843-3883



## Next Meeting

Tuesday, April 27th, 1999  
7:00 P.M.

At Hank Cahill's *Dust Bowl*  
Refreshments by: **Steve Sarro**  
Member challenge project: **Scratch Awl**  
Demonstration: TBD

# Meeting Minutes

The March meeting was called to order at 7:17 at Hank Cahill's Dust Bowl

## President's Report

**Hank** introduced two visitors Ray Boise and new member Christina Dutra and then presented our guest speaker, Tom Kamila, prior to our formal meeting.

**Mal** made new membership name badges, at Hank's request, to be worn at each meeting and then returned to storage rack when leaving.

The bowls displayed by members at the Sharon NH Art Show were picked up by Hank.

## Old and New Business

Treasurer **Wally Kemp** reported \$1135 in treasury. A Stronghold Chuck was purchased for use with the MSSW lathe. Mal submitted newsletter expenses for Dec98 thru Mar99 of \$125.91.

**John Murphy**, Librarian, announced that he would contact Chris and Ray to have library books returned.

A discussion was held about future speakers for the meetings. Hank mentioned Al Stirt was available for \$600-700. A \$20 fee for members and guests to cover our costs was proposed. No action was taken. Paul Marks mentioned Chris Stott and he will check on availability.

Habitat for Humanity Bird Houses are due April 24th. Drop them off at 1 South Main St., Randolph or give to Hank and he will deliver.

The AAW challenge project was discussed. Richard Friberg brought in pictures of Cinderella's Carriage and the possibility of making for this year was proposed. Drawings will be needed and at least six members will have to participate. Mal will make drawings for the Gnome Rotary Aircraft Engine and members can select their pieces to be turned for the AAW year 2000 Challenge. Details of the limitations for size and weight for next year have yet to be announced by AAW. But in any case this project, if produced, could be donated to a new Air Museum being formed in Quincy, MA.

**Mal** received a call from Scott Dixon, Woodcraft Mgr., reporting that Peter Gill the Sorby representative will be in their store with woodturner and author Keith Rowley (On a World tour) as follows:

April 23rd Friday 4-7 Book Signing  
April 24th Saturday 10-5 Demo/tools  
April 25th Sunday 10-2 Open day - discussions

Contact the Woodcraft store in Woburn for further information or changes. Plan to attend if possible.

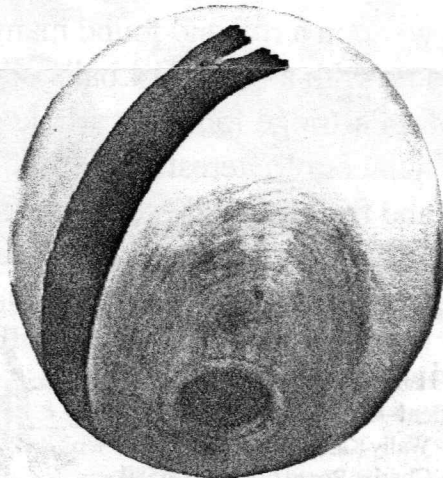
ShopSmith has a Woodturning unlimited web site:  
[www.W-U.com](http://www.W-U.com)

"The most complete line of woodturning materials available in the United States". AAW members receive a limited time 10% discount through May 31, 1999.

Copies of articles on Tips using a skew chisel and Turning a sphere were made available by Mal.

**Roger Hill** requested that we again auction off a bowl, turning or other member crafted item each meeting as in the past. The member who wins the item must produce one for the next meeting's raffle.

After Show and Tell a wood swap was held. There was enough wood available so that almost every member received a piece. **Mal** obtained a large maple log from one of over 200 trees cut at the site of the over 100 year old Braintree Dam (Quincy Reservoir) being rebuilt by the Corps of Engineers. With help from **Charles Rosen, Dave Hutchins, Jack Nash and Wally Kemp** the log was selected and cut up for members use.



Habitat for Flycatchers By Wally Kemp  
Turned from Dam log - He zipped through it in no time

## Tom Kamila's Discussion on Closed Forms

Tom used a computer slide show presentation and samples of his work in various stages to illustrate his background and turning expertise. A vocational instructor and in the construction industry for over 20 years he has been turning for 12 years. He showed images of many of the projects he has fabricated over the years including an 8" telescope, camera dolly, green wood ladder back chairs, Windsor chairs, and of course a lathe. His lathe has a concrete weight at the lathe bed rather than at the base.

Tom fabricates many of his tools and fixtures and made available to members instructions for fabricating a thickness gage for closed form vessels.

He presented in detail how he initially turns his end grain red oak vessels and to prevent cracking removes the pith and covers the hole with aluminum duct tape and then supports them upside down on a stick to dry. This method developed over time has proved to be effective. A stem is glued into the pith hole for handling while finishing, then cut off to finish the base. A wire brush is used to enhance the oaks texture prior to spray finishing with automotive acrylic finishes on a rotating fixture. See the MSSW march newsletter for photos.

Tom's presentation was well received. He experienced the route 128 *high speed* breakdown lane in use during rush hours for the first time as he drove down from Ashburnham. That's more exciting than a catch!

Tom Kamila's presentation



## Welcome New Member Cristina Dutra

### Articles of Interest to Woodturners

Etched Mirror Turned Jewelry Box  
*Woodworkers Journal*, June 1999, page 43

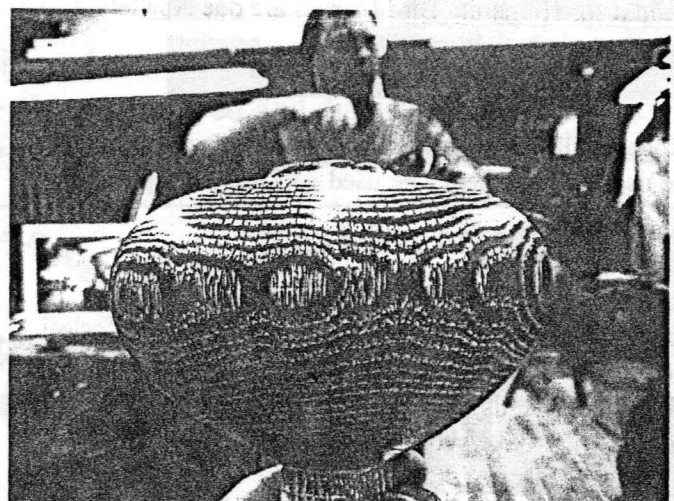
Turning Trembleurs by Mike Darlow  
*Woodwork*, June 1999, page 40  
(A challenge for Wally Kemp's center rest)

Sanding Fids, page 50 (A useful challenge project?)  
Bowl Turning Basics by Richard Raffan, page 68  
Hazardous Chemicals in the Workshop, page 117/118  
*Fine Woodworking* May/June 1999



Tom explains how he made snowshoes without using the lathe

Special effects!



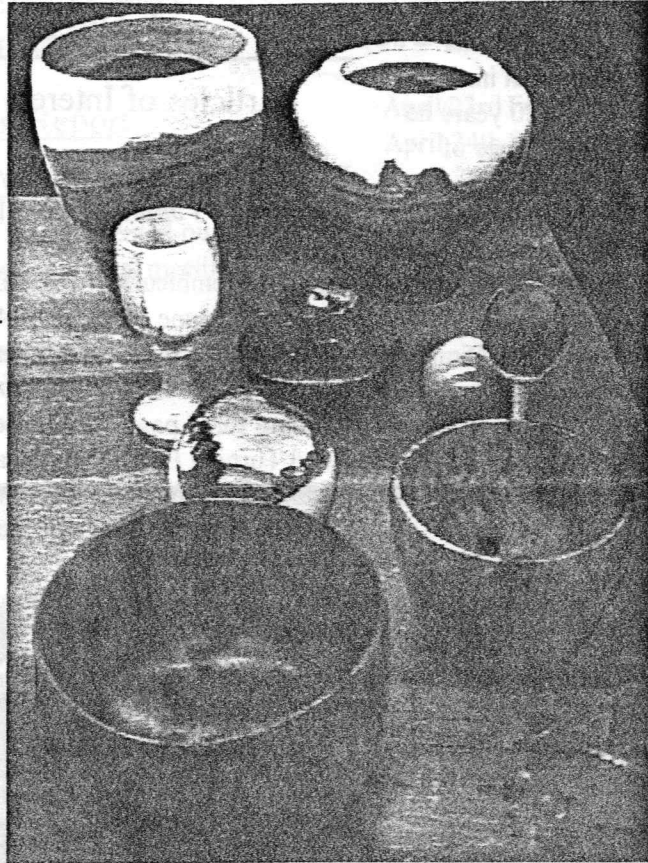


# Show & Tell

John Murphy's Ash deep bowls - the left bowl has pith cracks (check out Tom's method) - the right bowl has 3/8" walls

Richard Friberg's cherry goblet and bark edged bowl. Richard also presented Hank with a turned gavel to control the meetings!

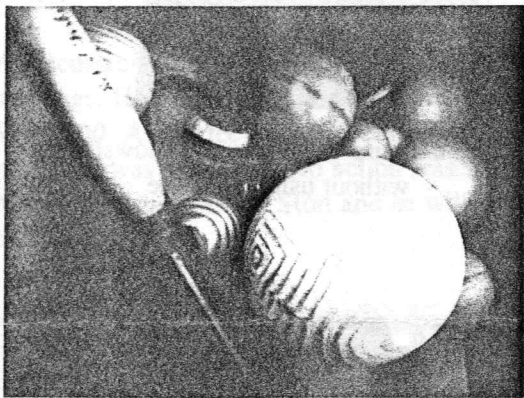
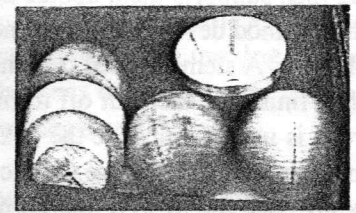
Jeffrey Keller's large cherry burl bowl on the left and tall elm bowl on right - Jeffrey also showed his small turned ball on string attached to a hand held cup as a game challenge



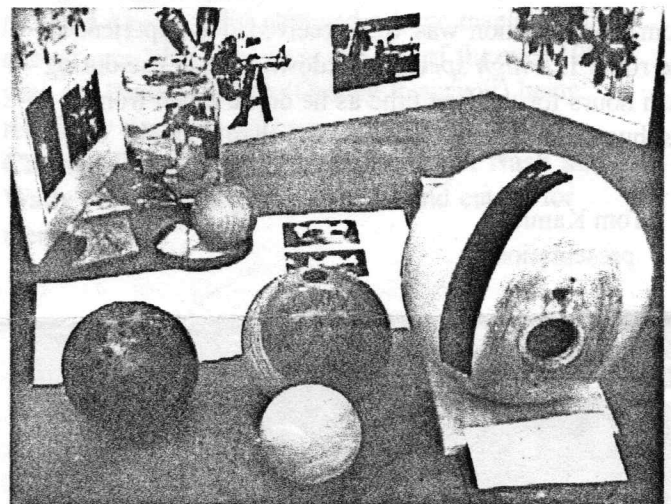
John Murphy's turned and nicely carved claro walnut container and his cherry ball to right

Steve Sarro's walnut ball on stand

Jesse Meyer's turned 3 balls together in a row - shown also is an aluminum cup center he fabricated



Roger Hill's 14 balls of all sizes in a box with the skewer he used to turn them - he used golf tees as cup centers



Mal's ball and turning method details behind Wally Kemp's Burl Ball bowl, ball bowl, and habitat for flycatcher - is the ball in front Hank's Bocce ball? Hank showed his 3 footed bowl which received a prize at the Sharon Art Show - Congratulations!



Emilio's happy over the way his turned tulips blossomed - he also showed cleverly turned and sculpted clover pins