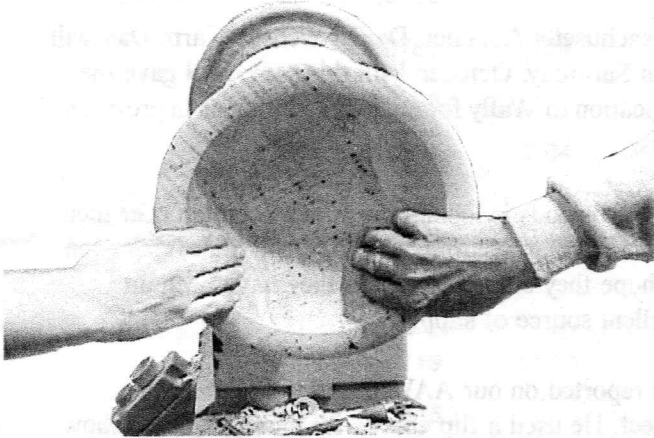


AS THE WOOD TURNS

April 2000

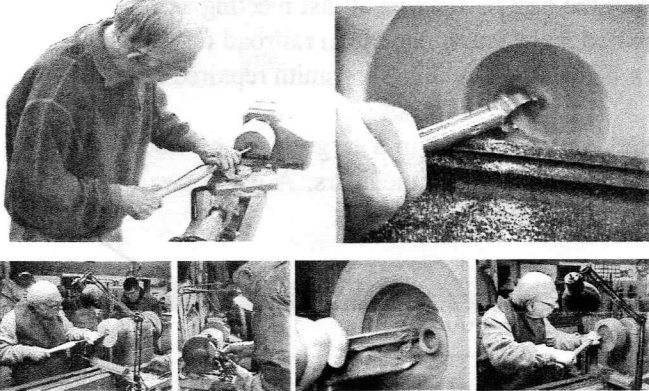
Oh! It Feels So-o-o Good!



Al Stirt Demonstrated Turning and Decorating Techniques
October 1999

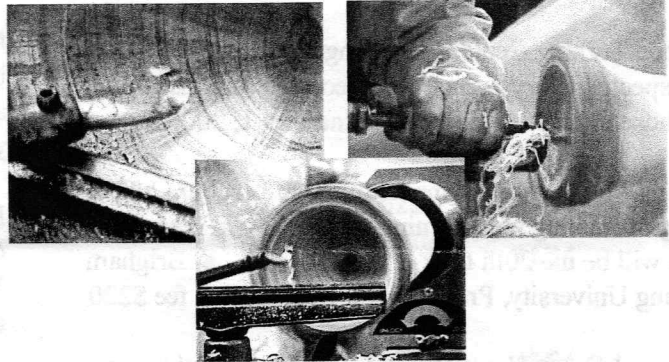
Chips Fly At Great Meeting

With two lathes in operation members pick up turning tips
and get to try new tools and techniques



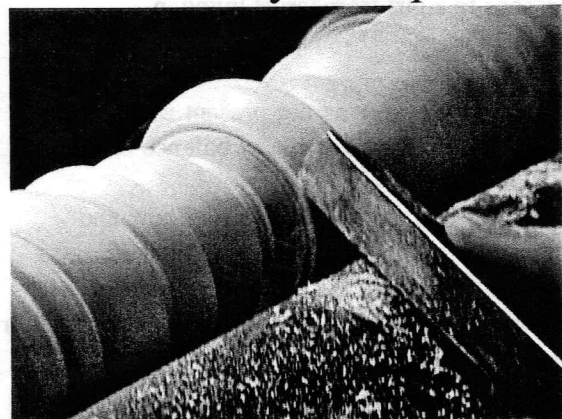
March 1999

Hooked on Turning



Wally Kemp demonstrates the Hook tool
July 1998

At Wally's Shop



Taming of the Skew
Member's practice turning beads

August 1998

Favorite Newsletter Covers

2000 MSSW Officers

President - Hank Cahill (781) 878-0234
Vice President - Felix Troiano (781) 749-1713
Treasurer - Wally Kemp (781) 871-1390
Secretary - Mal Partridge (781) 843-3883
Librarian - John Murphy (781) 834-1179
Newsletter - Mal Partridge (781) 843-3883



Next Meeting

Tuesday, April 25th, 2000
7:00 P.M.

At Hank Cahill's *Dust Bowl*
Refreshments by: Ernie Grimes
Member Challenge: Easter Egg
Demonstration: TBD

Meeting Minutes

The March meeting was called to order at 7:06 at Hank Cahill's Dust Bowl

President's Report

Hank received the following Correspondence:

-Wood Turning Center / Challenge VI Exhibition Prospectus Entry forms were received and distributed to those interested. Entry deadline July 1, 2000.

-Utah Woodturning Symposium 2000 brochure. (The longest running woodturning symposium in the world - this will be the 20th time). June 1, 2 and 3 at Brigham Young University, Provo, Utah. Registration fee \$220.

-Central Coast Newsletter - Interesting monthly member challenge: Turn a clock - results may be seen on their web site. www.thegrid.net/sloturnings/ccweb.html

-E-mail from Mary Lacer looking for someone to give turning lessons to a girl from Israel living in Charlestown.

Treasurer **Wally Kemp** was not present early in the meeting but Hank reported treasury balance of \$950.47.

The Habitat For Humanity Bird House Show and Auction entries are to be submitted by April 22.

Wally has more Anchor Seal available for \$8 per gallon - you supply container.

A big heavy duty lathe is for sale at \$300 - belt driven - needs work - call 781-934-2847 if interested.

Tom Holland, a previous member is taking turning lessons from **Wally** and has donated \$25 to our group.

Librarian's Report: **John Murphy** has two new books for members to borrow. *Woodturning Methods* by Mike Barlow and *Sculpting Wood* by Mark Lindquist. Also the MSSW Audubon show video has been received.

Other Business

The May meeting will be held at **Janet Collins** shop. Directions in next newsletter.

Emilio reported on Beth Ireland's Rhode Island demo. She did a nice job and is a good teacher, using slides and drawings as well as turning to demonstrate her methods. About 20 turners were in attendance.

It was suggested that Beth be contacted to do a MSSW demonstration. Also Ron Pessolano (decorative bowls) suggested as a possible demonstrator.

Massachusetts Audubon Daniel Webster Farm Day will be on Saturday, October 14th this year. **Mal** gave the application to **Wally** for our participation as in previous years.

HK Hardwoods is looking for a new location near their current Brockton store which they will be leaving soon. We hope they stay close by as they have been an excellent source of supply.

Mal reported on our AAW Chapter Collaborative Project. He used a flip chart with photographs to show in detail the fabrication of various components. The assembled project, with parts produced do date, was on hand for all to examine and comment on.

During Show & Tell **Felix Troiano** showed a thickness gage he made. **Jeffrey Keller** described the wood used in the box he showed at last meeting as red ironwood from South American railroad tie. He also had a bent spindle on his Shopsmith repaired for \$50!

Jessie Meyer brought in a large stock of wood that was made available to members. A wood swap was held at the end of meeting.

Note: If you didn't receive this newsletter your dues are not paid for 2000.

New Delta Midi-Lathe

Model 46-250 1/2 hp, 1,725 rpm motor
Easy access to six speed changes. Ball bearing live center, 3" face plate, spur center, 6" tool rest, and heavy duty steel knockout bar. On-off switch located above headstock. Lathe looks similiar to small Jet lathe.

Wanted

Used Lathe in good condition for Cohasset wood-worker interested in turning.

Contact Jeff Gilman 781-923-1007

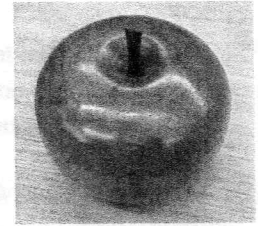
Decimal Equivalents

		.0156	1/64			.5156	33/64
	1/32	.0312			17/32	.5312	
		.0469	3/64			.5469	35/64
1/16		.0625		9/16		.5625	
		.0781	5/64			.5781	37/64
	3/32	.0938			19/32	.5938	
		.1094	7/64			.6094	39/64
1/8		.1250		5/8		.6250	
		.1406	9/64			.6406	41/64
	5/32	.1562			21/32	.6562	
		.1719	11/64			.6719	43/64
3/16		.1875		11/16		.6875	
		.2031	13/64			.7031	45/64
	7/32	.2188			23/32	.7188	
		.2344	15/64			.7344	47/64
1/4		.2500		3/4		.7500	
		.2656	17/64			.7656	49/64
	9/32	.2812			25/32	.7812	
		.2969	19/64			.7969	51/64
5/16		.3125		13/16		.8125	
		.3281	21/64			.8281	53/64
	11/32	.3438			27/32	.8438	
		.3594	23/64			.8594	55/64
3/8		.3750		7/8		.8750	
		.3906	25/64			.8906	57/64
	13/32	.4062			29/32	.9062	
		.4219	27/64			.9219	59/64
7/16		.4375		15/16		.9375	
		.4531	29/64			.9531	61/64
	15/32	.4688			31/32	.9688	
		.4844	31/64			.9844	63/64
1/2		.5000		1		1.000	

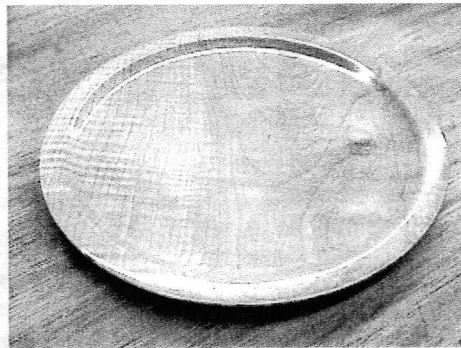
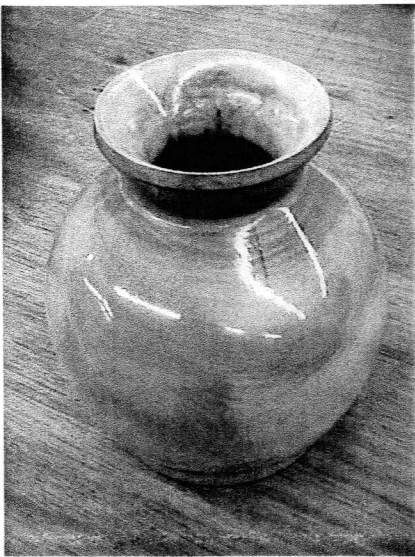
March 2000 Show & Tell



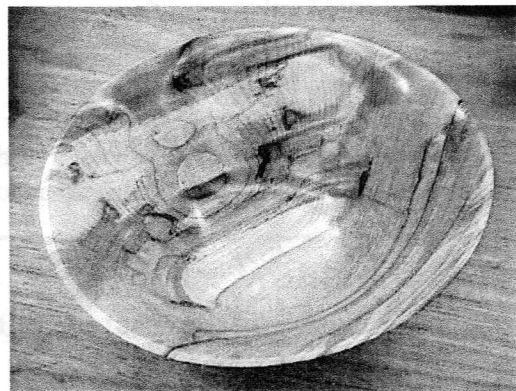
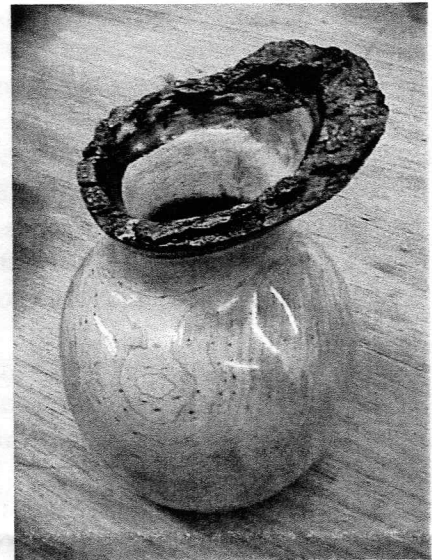
Spalted maple bowl
by Paul Marks -
Tung oil finish - used
Exorcet tool to
hollow



Apple by Jeff Keller
with walnut stem
(only member
challenge entry)



Felix Troiano used 5 coats of a
waterbased finish on his three pieces -
a maple plate from Jessie's wood, a
holly vase that turned green, pink and
cream and a maple bark edged vase
with pink coloring from Rich's wood



John Murphy showed two bowls from the same log using Rich Friberg's maple. Finish on left bowl is 4 coats lacquer and lathe applied HUT wax on bowl on right. Note natural figure 8 inside bowl