

---

# AS THE WOOD TURNS

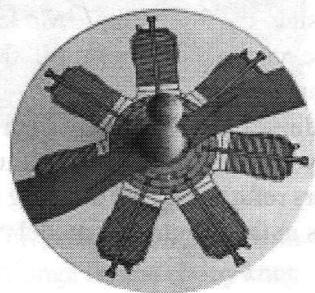
---

April 2001

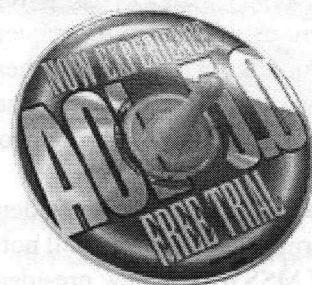
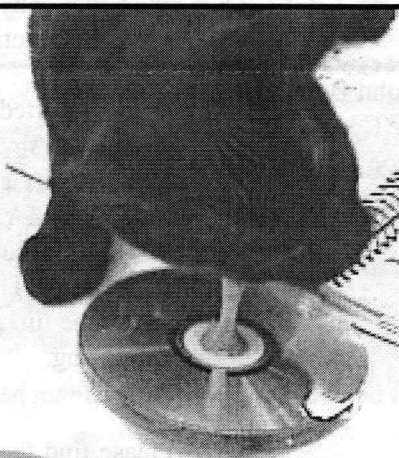
---

## Massachusetts South Shore Woodturners Are Tops - Even Hank's Kittens Think So

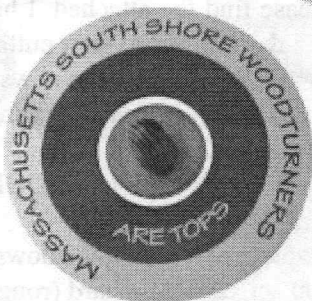
---



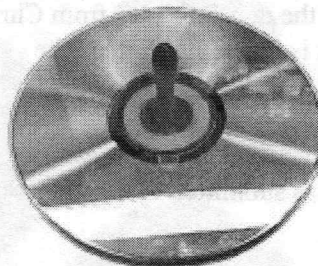
Mal's top allows Gnome  
Engine to run



Jeff's top shows what to do  
with those AOL cd's



Mal's top shows how they could  
be used for advertising



Wally's top has two cd's -  
Double the pleasure!

**Top Tips:** Personalizing the labels for your CD tops turns them into great gifts for children or for use as business promotions. Examples: "Take a spin with *child's name*", "One good turn deserves another", "We're the tops!", "Top banana", "Top dog", etc. CD labeler kits are available that have die cut labels and fixtures for applying labels to CD's. If you don't want to glue the CD to the top spindle turn a friction fit and/or use a small O ring to hold the CD in place.

### 2001 MSSW Officers

**President** - Hank Cahill (781) 878-0234  
**Vice President** - Felix Troiano (781) 749-1713  
**Treasurer** - Wally Kemp (781) 871-1390  
**Secretary** - Mal Partridge (781) 843-3883  
**Librarian** - John Murphy (781) 834-1179  
**Newsletter** - Mal Partridge (781) 843-3883



### Next Meeting

Tuesday, April 24th, 2001  
7:00 P.M.  
At Hank Cahill's *Dust Bowl*  
Refreshments by: Janet Collins  
Member Challenge: Honey Dipper  
Demonstration: TBD

## Meeting Minutes

The March Meeting was called to order at 7:10pm at Hank Cahill's Dust Bowl

### President's Report & General Business

**Hank** introduced guest Jeff Gilman and new member Leonard Manderville. Correspondence was received from the Surrey woodturners in England.

A supply of Starbond for Woodturners Cyanoacrylate adhesive is available to members @ \$5.00/ 2 oz. thick or thin viscosity bottle.

Secretary **Mal Partridge** reported that John Barrett is seriously ill and at the request of the Cape Cod Woodturners he has sent them a photograph of John in costume and at his pole lathe taken at the '98 New England Woodturning Symposium.

Ray Cartier, former president of CCW has not been turning as much and will not be returning as a member of MSSW. The new president of CCW is Lew Schlotterbeck.

**Mal** received a "call off the dogs" E-Mail from Chris reporting that "the check is in the mail", keep the newsletter coming!

Treasurer **Wally Kemp** reported \$920 in treasury. A chair rental bill of \$20 was submitted by **Hank** for the Jacques Vesery demo.

Librarian **John Murphy** again reported that a video, *Turned Boxes by Ray Key* is still missing. Will the member who checked this video out please return it. Two books are checked out and overdue. Please sign for videos and books when checked out so we have a record of activity and can locate missing items.

**Wally** has one gallon of wood sealer left for purchase.

The North River Arts Society has requested donated Bird Houses for display and sale at the May Festival of Arts Feature Barn.

Bird houses for The Habitat for Humanity exhibit at the South Shore Plaza are due by April 21, 22. Drop them off at the church at 1 South Main St., Randolph.

**Roger Hill** demonstrated for the 3rd and 5th graders at the Foster Elementary School in Hingham. Thirty tops were turned and distributed to the delighted students. Roger plans to repeat the demo next year.

**Hank** suggested we demonstrate to the public, possibly at the event on Cohasset common in June time frame. Contacts will be made to see what can be set up.

**Rich Friberg** showed what a chisel chain saw blade looks like as described at our last meeting chain saw demo. His new Husqvarna chain saw was built in Sweden and brought over by his father. More features and better construction than those built in this country, but the instruction manual is in Swedish!

**Wally** reported on his visit to the South Shore Model Railway Club open house held at their great 10,000 square-foot facility at Bare Cove Park, Bldg. 51, Hingham, MA. The building was one of many used in the past by the U.S.Navy as a warehouse for ammunition storage. The members refurbished the building into one of the finest facilities in the country for model railroading.

#### E-Mail from Paul Marks:

Please find the attached. I have contacted the forester and they expect to start cutting when it thaws. We should put this into the newsletter and see what interest it generates. Perhaps we can forward it to other groups in the area?

#### APPLE WOOD AVAILABLE

A southern Vermont landowner is planning to clear a 100 acre apple orchard (roughly 15,000 trees) and the consulting forester is looking for woodworkers who are interested in the wood for **turnings**, cabinetry or others who could use apple wood chips for smoking meats or fish. They are looking for an alternative use to mulching or chipping. The orchard is 20-25 years old so the trees are only about 4-6" in diameter, 12-15' high with trunks that are 3-6' long. Most likely it could be purchased for a nominal fee. To inquire, please contact Nina Huffer of Huffer Forestry Associates in Chester at 875-3092.

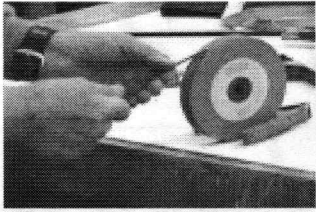
Welcome New Members

Leonard Manderville

Frank Iafrate



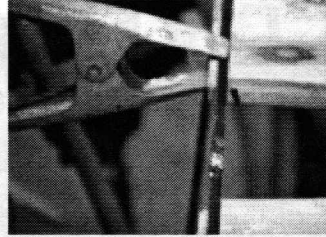
# How To Repair a Bandsaw Blade - Demo by Hank Cahill



Overlap blade ends, then grind at angle for lap joint



Clamp to align joint - Silver solder after applying flux



Silver soldered blade joint in fixture



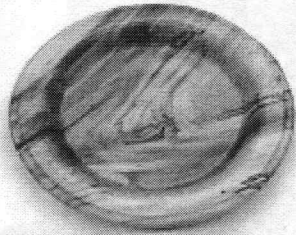
Carefully grind soldered area to blade thickness

## Hank's Show & Tell

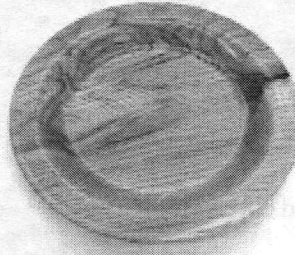
(Two meetings' worth)



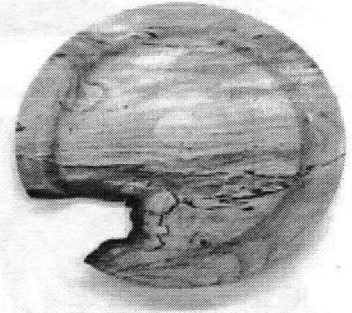
Curly maple container with bubinga lid and ebony knob



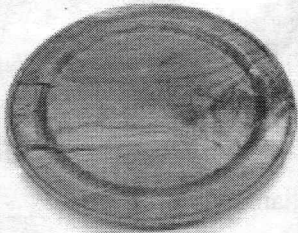
Spalted maple plate



Richwood (ash) plate



Spalted maple plate painted with blue sky over a spalted pond



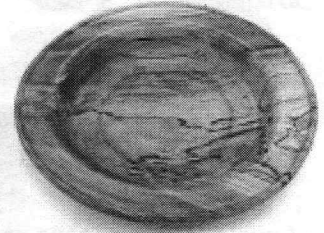
Cherry plate with splits



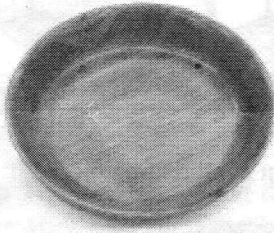
Large cherry bowl - cut and dried in 1993



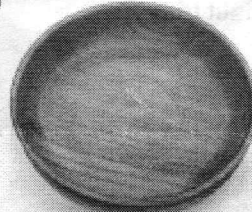
Apple cup



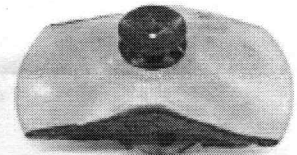
Yes it's also spalted maple!



Cherry deep dish



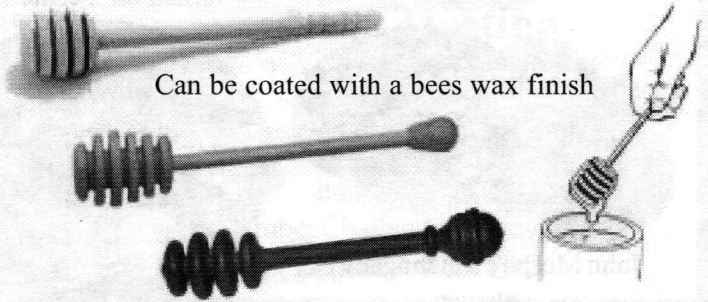
Cherry bowl with magic marker trim



It's hollow inside!

### Member Challenge Notice

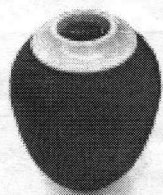
Don't confuse the honey dipper with the honey dipper wagon! It is used as a traditional way to serve honey. After dipping the Honey Dipper into the honey jar, the honey will stay on the dipper as long as you keep turning it. Once you stop turning the honey will drip off onto whatever you choose. Make one for your Honey!



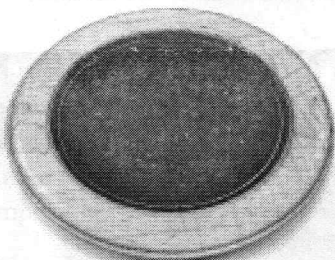
Can be coated with a bees wax finish

# Show & Tell

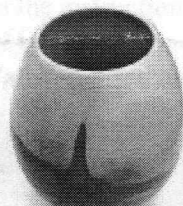
March 2001



Richard Friberg's vase with new texture pattern using Ryobi carver



Aged copper look using 9 colors



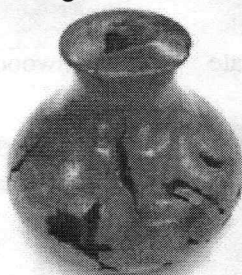
Richwood (ash) vase



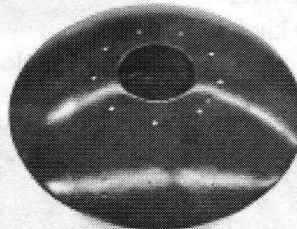
Hemlock burl with splits



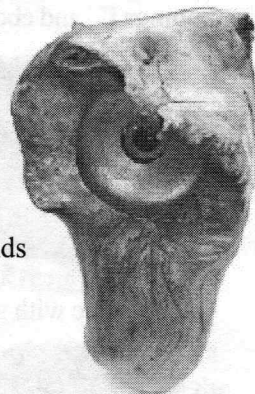
Angelo Iafrate's tagua and zaccahaenus nuts with ivory and walnut trim



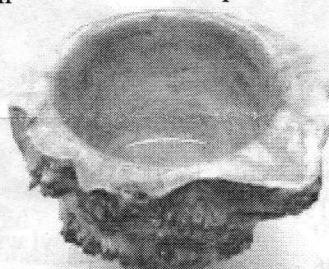
Rhododendron root burl lamp base



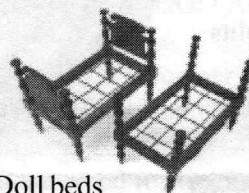
Redwood burl w/fake diamonds



Sycamore "Owl" w/gold leaf



Emilio's bleached maple burl turned on 2 centers

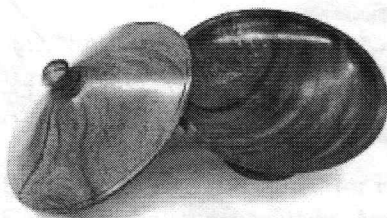


Doll beds

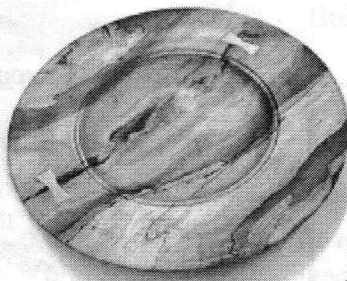
Leonard Langevin's interesting pieces



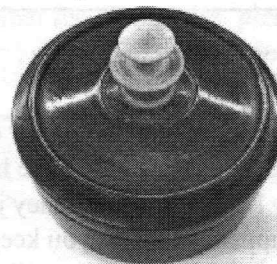
Jeff's Purpleheart pen



John Murphy's mahogany container



Wally's spalted maple plate with butterflies



Jeff's Ironwood box with holly knob & 5th Pool cue



Roger Hill turned a harpoon