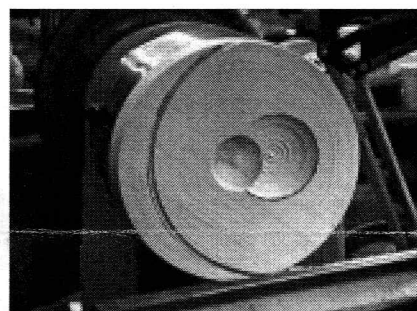
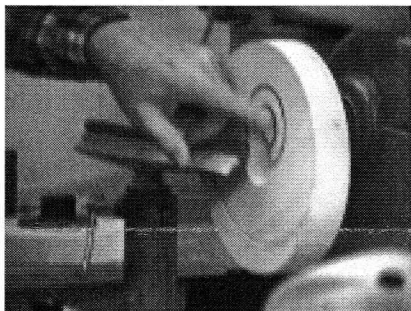
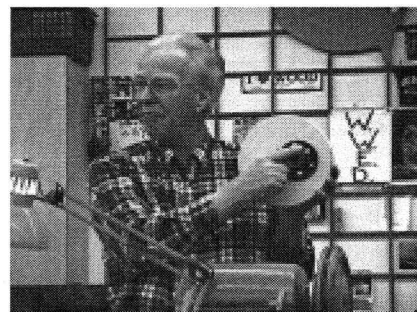
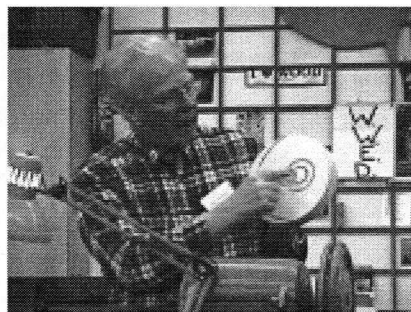

AS THE WOOD TURNS

April 2006

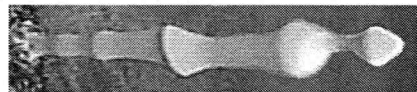
Off-Center Turning

The eccentric side of woodturning

Ken Lindgren demonstrated multi-center turning using a Delta faceplate that has a center screw position for accurate placement on the work piece for locating it on the desired center. He also showed how to create female forms by shifting the position of the tailstock center on the workpiece.



Hips ● ● ● Shoulders
● Tailstock center position



2006 MSSW Officers

President - Hank Cahill (781) 878-0234
Vice President - Richard Friberg (508) 378-2436
Treasurer - Wally Kemp (781) 871-1390
Secretary - Mal Partridge (781) 843-3883
Librarian - Leonard Mandeville (508-586-7679)
Newsletter - Mal Partridge (781) 843-3883
Web site: <http://www.mssw.sitelinker.org/>



Next Meeting

Tuesday, April 25th, 2006, 7:00 P.M.
At Hank Cahill's *Dust Bowl*
Refreshments by: David Hutchins
Member Challenge: Decorative Doorstops
See inside for details
Demonstration: TBD

Meeting Minutes

The meeting was called to order at 7:00 pm at Hank Cahill's Dust Bowl

President's Report and General Business

Hank's mail included the CNEW newsletter, AAW certificate of liability insurance (It was agreed we would give a donation to AAW for same), Surrey Woodturners of England newsletter, and information on AAW request for Christmas Ornaments to be delivered to Louisville Symposium.

An E-mail from CNEW announced that Alan Lacer would be demonstrating May 11th. at 6:30 pm at the Worcester Center for Crafts. A fee of \$15 allows you to see a great turner in action - as Hank says: He's King of the Skew!

Handouts for Ken's exhibit at the South Shore Arts Center which explores the creative process and Hank's "One Good Turn Deserves Another" Newspaper article were made available to members.

Wally will be conducting a turning demo on April 20th for the fifth grade at Hanover middle school.

Hand's on Saturday set for April 15th., 10am at Hank's.

Wally reported \$1864 in treasury. He has purchased a new lathe as requested and is still looking for a replacement capacitor to repair failed lathe motor. A Fund raising letter was received from Fuller Craft Museum and a request for a copy of our member mailing list. The members voted that they did not want it distributed.

Mal announced that members turnings could be picked up from Fuller Exhibit April 3rd to 8th, 10am to 5pm.

Newsletter expenses for December 05, January, February and March 06 issues of \$231.04 were submitted to Wally. Expenses included costs for 200 Fuller Exhibit Gnome Engine brochures.

Ken talked about the lack of good turning tools at Fuller. It was agreed that we would spend \$175 for essential quality turning tools. Not sets but tools used for classes. Sidney volunteered a 6' grinder for Fuller.

Emilio mentioned that Ocean Woodturners in Rhode Island will be having a demonstration by Jean Francois Escoulen on June 17, 2006. Worth taking in!

The Fifth New England Woodturning Symposium is reaching capacity. If you plan to attend the fee is \$50 which includes lunch. Members have received notices.

Ken reviewed the Cohasset Show on the Common to be held three days in June. We will have 2 booths, one for turning demonstrations the other for display and sales. Open to all members who would like to demonstrate, sell or help in setting up. Sales run \$1500-3000.

Mal described an incident that occurred during WWII off the coast of Maine when the U.S.S. Eagle PE-56 sank. The Navy declared the ships boiler exploded. This took place during the final days of German involvement and resulted in the greatest loss of U.S. Naval personnel in New England waters during the war. For 56 years the true story of what happened has remained hidden until Paul Lawton, an attorney and naval historian from Brockton embarked on a quest to find the truth, that the ship was torpedoed by a German sub. The story is told in a book by Stephen Puleo, "Due to Enemy Action".

Why Mal mentioned this is that Paul Lawton visited our demonstration and display of the Gnome engine at a Fuller Craft Museum fund raising benefit a few years ago. During his visit he mentioned he was a diver and as Hank was a hard hat diver in the service they had something in common and he was interested as well in woodturning.

During the March meeting of the Massachusetts Historical Aviation Society where Paul Lawton made a presentation about the story of the U.S.S Eagle, He recognized Mal as the "Wooden Engine man" from the Fuller Museum benefit. He gave Mal a copy of his published research which evolved into Stephen Puleo's book. Highly recommended reading!

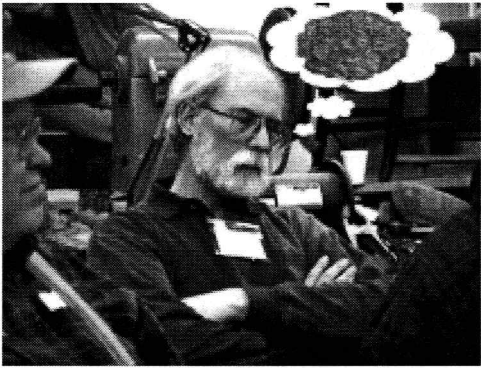
The final chapter of the story ended aboard the U.S.S Salem Museum docked at Quincy where the few remaining crew members and the families of those who died were awarded Purple Heart medals.

Member Challenge Information:
Woodturning Design Magazine Spring 2006

or check web site for instructions and pattern:

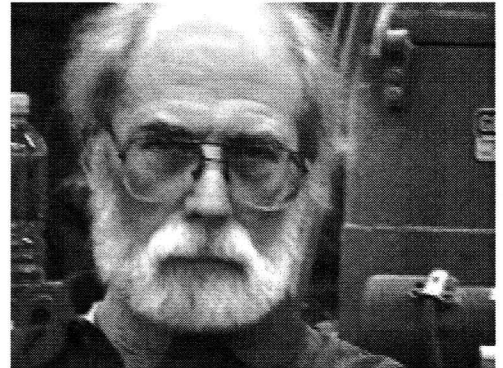
<http://www.woodturningdesign.com/onlineproject/>

index.shtml



Woodturners dream of Burls not Girls!

Andy becomes
a member of
the
Keller, Howe
and Osborne
Burlesque
Team

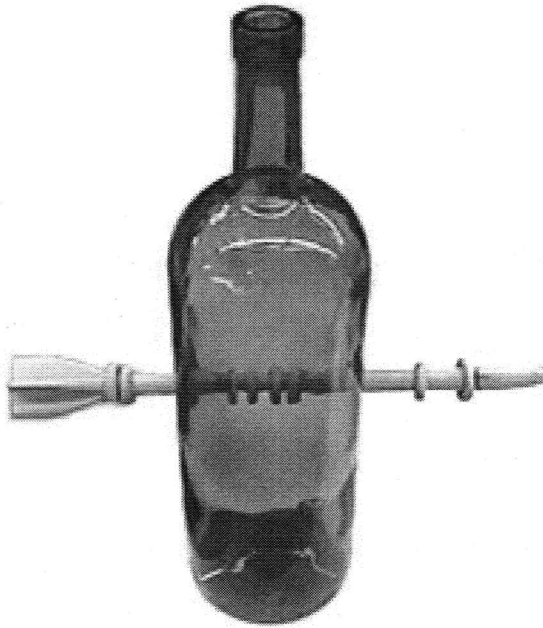


Did someone say they found a Burl!?

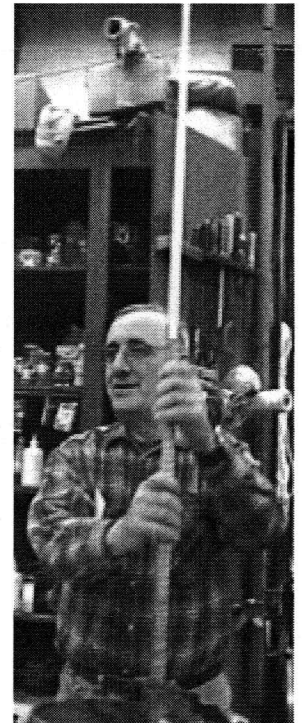
More Show & Tell



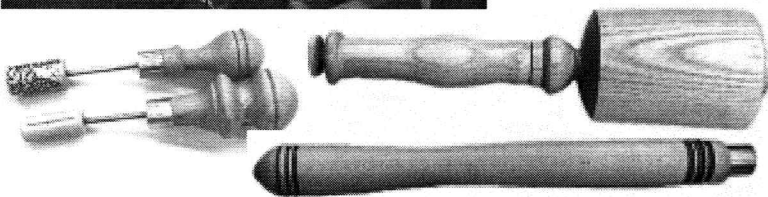
Emilio's "Patented" party bowl
Chip and Cheese sides, recess for insert



Ron Robertson's Arrow through bottle
from *Woodturning Wizardry* book



Bob Iuliano's Pool cue
and bowl

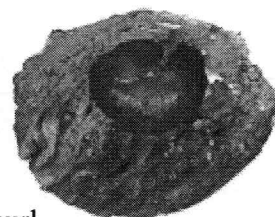
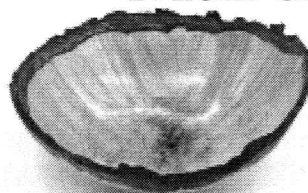
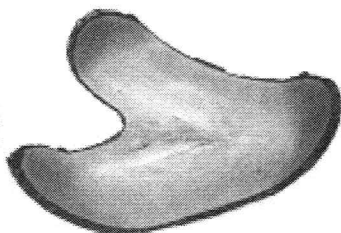


Jae Ewart's North Bennett Street School turning assortment



Show & Tell

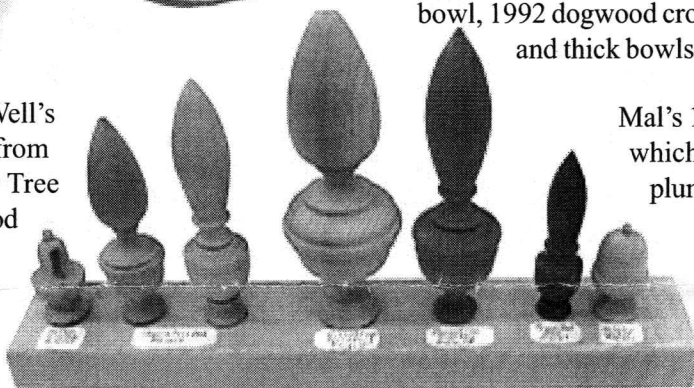
March 2005



Wally's Duxbury red maple burl bowl, 1992 dogwood crotch, thin and thick bowls



Mike Well's piece from Liberty Tree wood



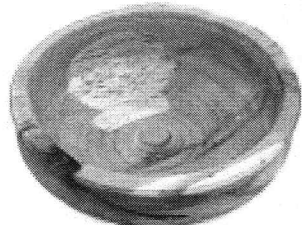
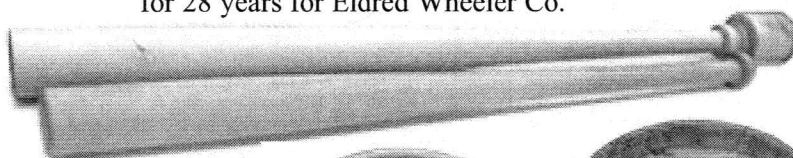
Mal's 1999 finial which is also a plumb bob!



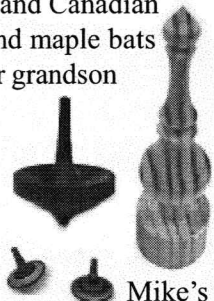
Jesse Meyer's 18th century finials he has been turning for 28 years for Eldred Wheeler Co.



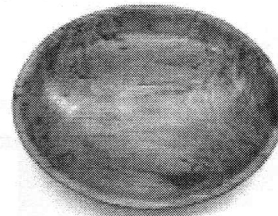
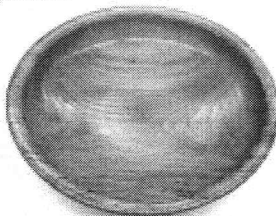
Hank's cherry burl piece and Canadian ash and maple bats for grandson



Med's unfinished cedar bowl



Mike's tops and finial



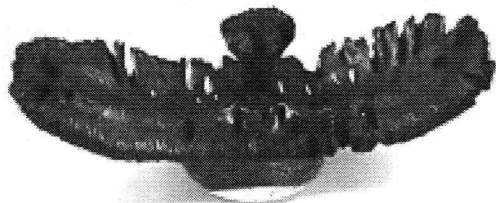
Jim Flannery's bowls, maple weed pot and yew twin handle cup



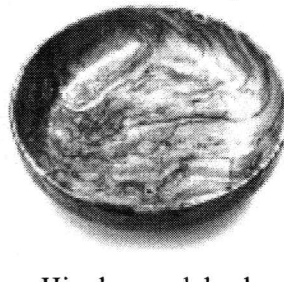
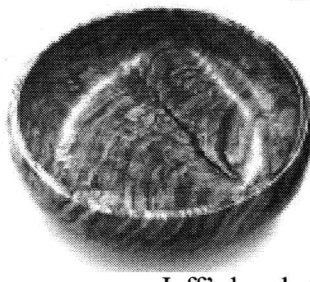
Nigel's large bowl from 4ft. Hingham oak burl he and Jeff liberated



Sidney's red cedar finial box, finial and small pedestal bowl



Ken's interesting Australian pine cone piece on temporary base



Jeff's bowls from Hingham oak burl and ebony finial