

---

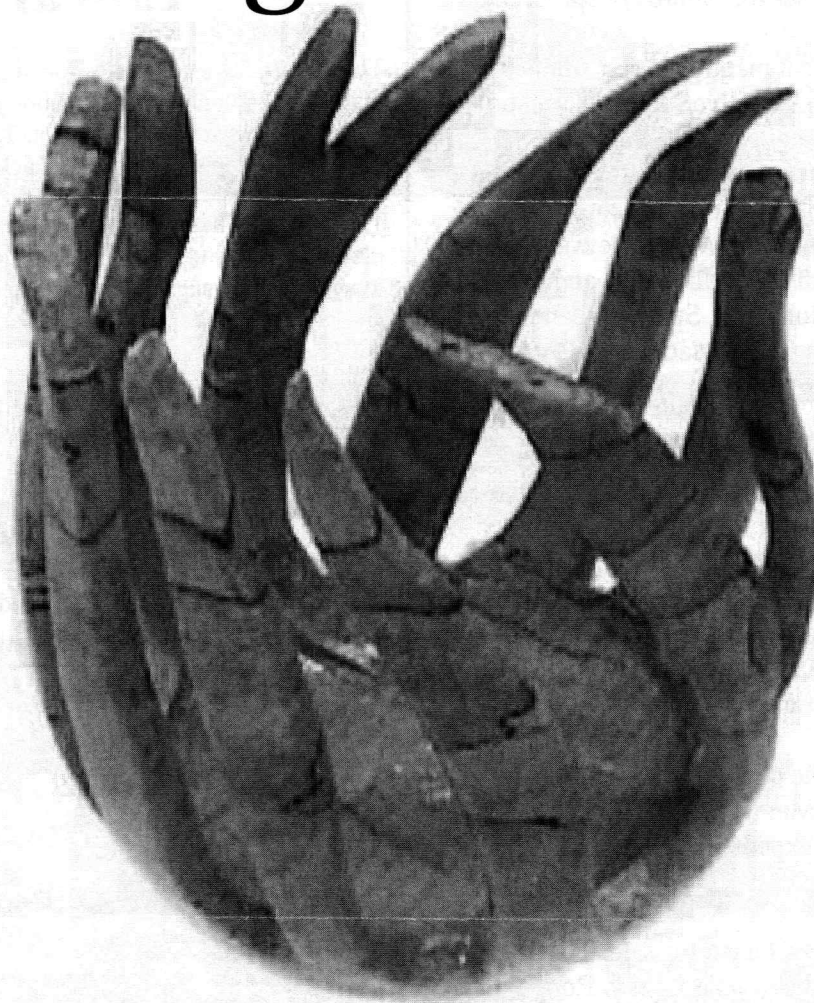
# AS THE WOOD TURNS

---

April 2008 Issue 130

---

## Doing The Twist



Ron Robertson's piece gives the twist a new distorted meaning!

### 2008 MSSW Officers

President - Hank Cahill (781) 878-0234  
Vice President - Richard Friberg (508) 378-2436  
Treasurer - Wally Kemp (781) 871-1390  
Secretary - Mal Partridge (781) 843-3883  
Librarian - Ron Robertson (781-545-8295)  
Newsletter - Mal Partridge (781) 843-3883  
Web site: <http://www.mssw.sitelinker.org/>



### Next Meeting

Tuesday, April 22, 2008, 7:00 P.M.  
At Hank Cahill's *Dust Bowl*  
Refreshments by: John Murphy  
Member Challenge: Awl or nothing at Awl  
See American Woodworker May 2008 Pg28  
Demonstration: Jeff Keller - Pen Turning

## Meeting Minutes

The meeting was called to order at 7:00 pm at Hank Cahill's Dust Bowl  
President's Report and General Business

Hank received Surrey Woodturner's Newsletter from England for member review. Craft Supplies announced a closeout sale 30-70% off and sent \$390 worth of \$10 gift certificates for members.

Hand's On at Hank's was set for Saturday, April 19th.

Mal's reported a baseball bat manufacturing company from Texas was coming to Fall River, MA and will be available for plan tours. Details were in binder for review along with information on the Craftsman Digital Miter Gage for \$79.99, Article on turning a miniature stool, Beall buffing shaft project, What's New and Hot for woodturners, turning an acorn birdhouse and details about Terrafugia's Transition Light-Sport Airplane and Road Vehicle combination. (A Massachusetts Company)

Wally reported \$2195 in treasury. He also mentioned we could have a Hanging Woodturning Exhibit at the South Shore Science Center in the future. This led to a discussion of what is a Hanging Woodturning?

Lenny the Librarian has resigned and Ron Robertson has volunteered to replace him as our Librarian. To be know as Ronnie the Ribrarian.

Ken discussed details of the coming South Shore Art Center Festival this June. Members who sell items will contribute to cover booth expenses. Sales have run from \$1500 to \$3000.

Ron Robertson has an Inkra Fence for sale. The mystery bowl in last months newsletter was Ron's.

Seven birdhouses have been received by Hank from members for the South Shore Habitat for Humanity Auction.

AAW Symposium: Hank has six reserved rooms available, actually five left, let him know if interested as he has to cancel by end of May for unused rooms.

Mike Veno wants items in the tool swap to show Member name and price desired on each item.

Jae Ewart reported that the NBSS lathe fund now totals \$3700. The \$300 donation received from MSSW started the fund and AAW has contributed \$1300. They plan to order a 1640 Oneway or a 3570 Powermatic.

Bob Allen mentioned that member Bryan Conklin is mentioned in an article in the May 2008 American Woodworker magazine.



## Library



The Library has a good selection of periodicals and books thanks to the donations by members. A self service system will be used for distribution. The following procedures have been set up to keep track of the collection.

The Librarian has been authorized to spend \$25.00 per month for additions to the library. Members are requested to submit their suggestions for new books, magazines and videos.

### Check Out

1. Sign and date control card found in book pocket
2. Place card in index box
3. If checking out a video:

Give \$2.00 rental fee to **Ron Robertson** or place money in index box

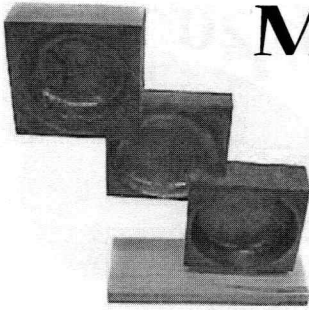
### Return

1. Find control card in index box and cross off name
2. Replace card in book pocket

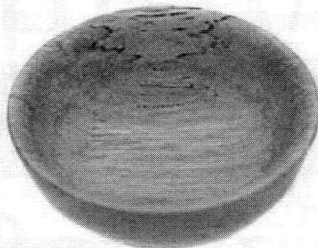


Mike Wells made a box of scrolled MSSW State of Massachusetts key chains for member purchase with proceeds to club treasury. Thanks Mike

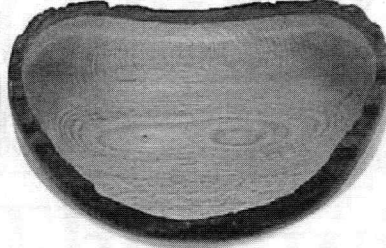
# More Show & Tell



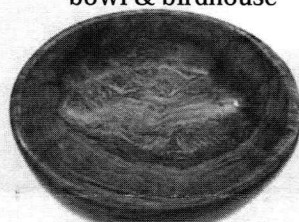
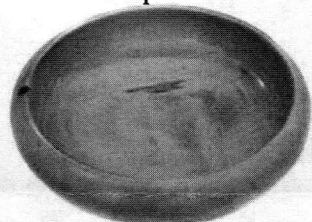
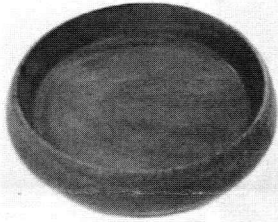
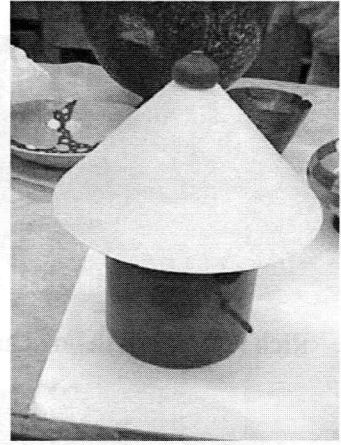
Bob Sutter's piece



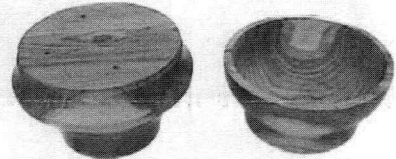
David Rice's Spalted Maple bowl



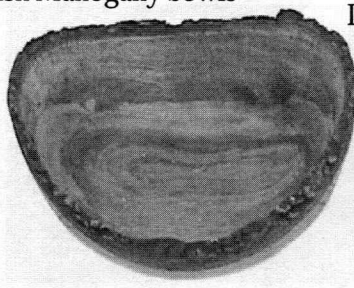
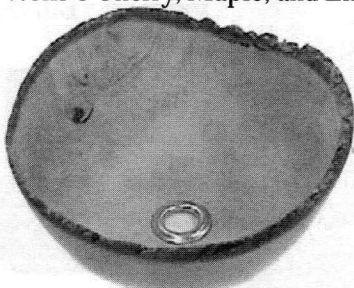
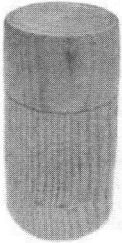
Charlie Rosen's Natural edge bowl & birdhouse



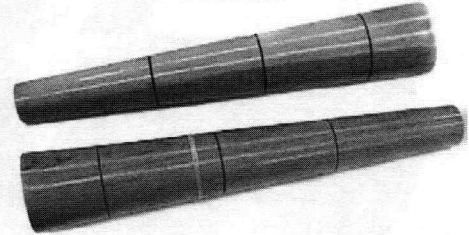
Mike Wells's Cherry, Maple, and English Mahogany bowls



Don's Yew pieces, one under construction

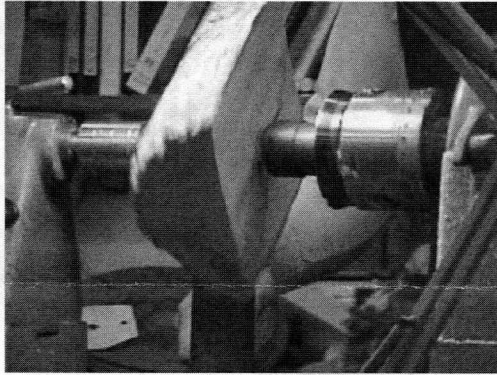
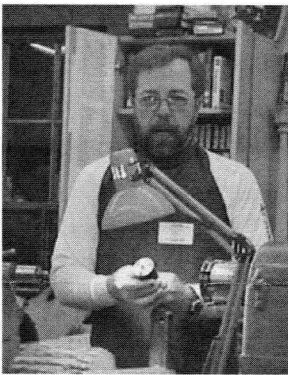


Paul O'Neill's Ash box, Maple and Curly Oak bowls

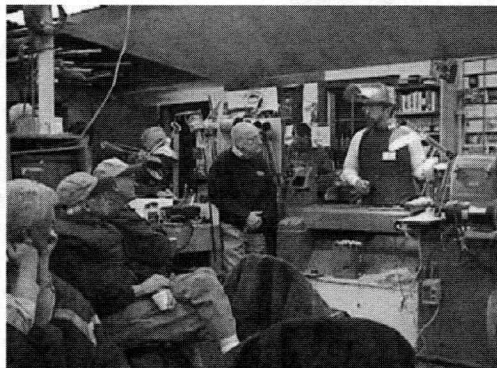
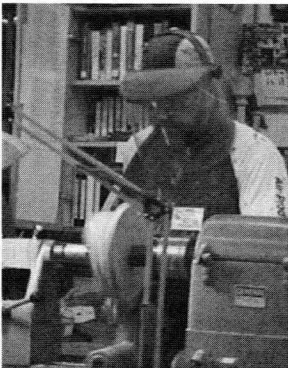


Bracelet mandrels by Ben Natale

## Rich Angus Demonstrated Bowl Turning

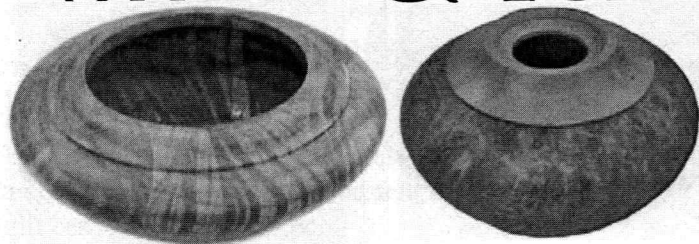


Rich Angus gave a detailed demonstration from cutting the log to the finished product

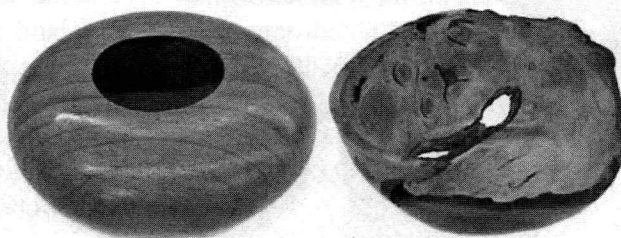


# Show & Tell

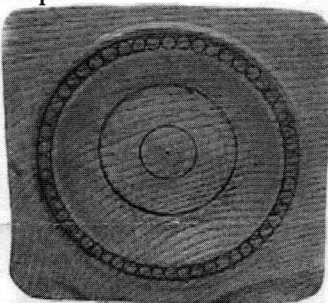
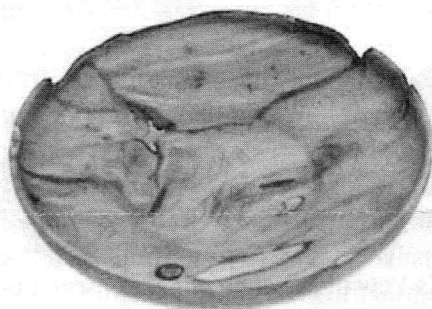
March 2008



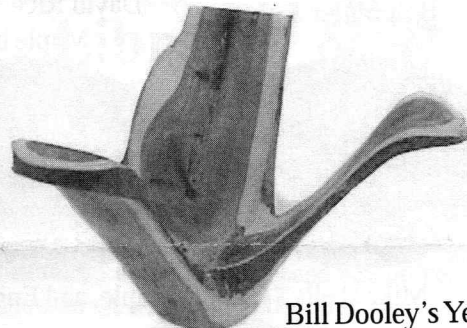
Rich Friberg's Ash bowl and Elm Burr & Maple bowl



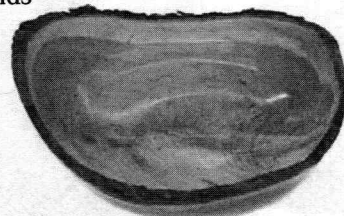
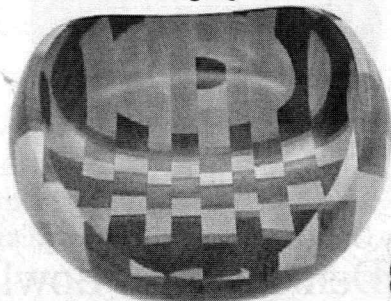
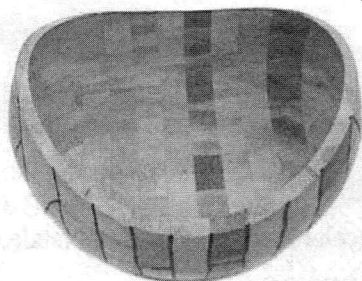
Ron Robertson's bowls



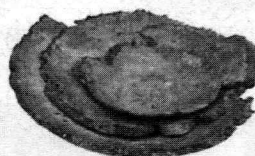
Hank's Oak wall hanging with instant coffee grounds



Bill Dooley's Yew



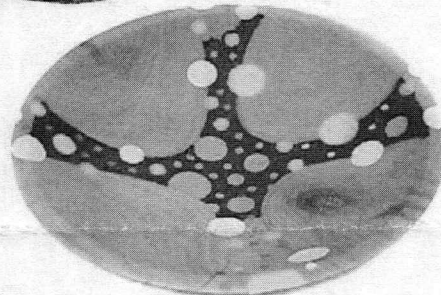
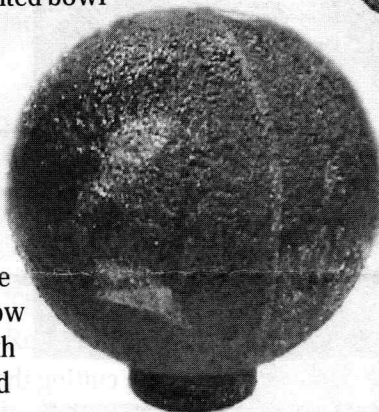
Nigel's Yew plate, Bamboo flooring segmented bowl & interesting segmented bowl



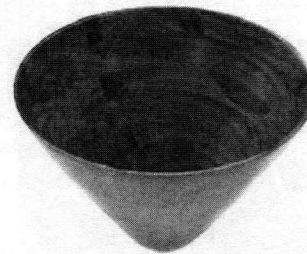
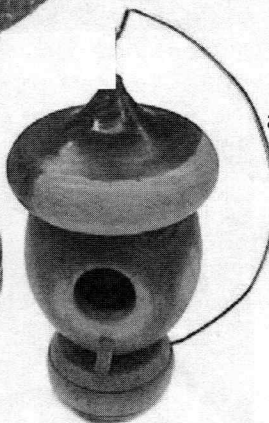
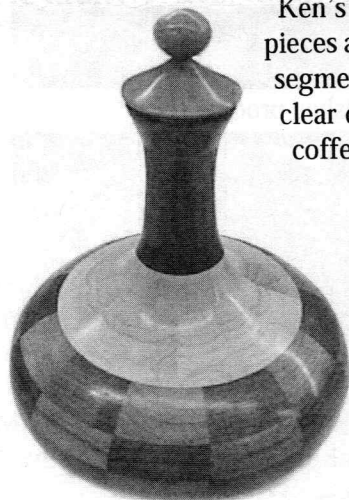
Wally's 3 nested pieces per Angelo's at last meeting and Cherry crotch bowl



Ken's Spalted Maple pieces and large hollow segmented piece with clear coat epoxy and coffee ground finish



Andy Osborne's decorated bowl and Walnut, Padauk and Purpleheart stacked ring piece



Jim Flannery's beautiful segmented pieces and Cedar acorn birdhouse on stand