
AS THE WOOD TURNS

April 2009 Issue 142

Vertical Evolution



Nigel Howe's beautiful segmented piece. He will be demonstrating "The Construction of Vertical Evolution".

2009 MSSW Officers

President - Hank Cahill (781) 878-0234
Vice President - Richard Friberg (508) 378-2436
Treasurer - Wally Kemp (781) 826-6254
Secretary - Mal Partridge (781) 843-3883
Librarian - Ron Robertson (781-545-8295)
Newsletter - Mal Partridge (781) 843-3883
Web site: <http://msswt.org/> or <http://www.msswt.org/>



Next Meeting

Tuesday, April 28, 2009, 7:00 P.M.
At Hank Cahill's *Dust Bowl*
Refreshments by: Mike Veno
Member Challenge: Triangular Box
Demonstration: The Construction of
Vertical Evolution by Nigel Howe

Meeting Minutes

The meeting was called to order at 7:00 pm at Hank Cahill's Dust Bowl

Hank reviewed correspondence he received. The Cape Cod Woodturners will be having a Jimmy Clewes demonstration May 9,10 for \$60, includes lunch. Check their web site for details. Our request for \$1500 AAW grant was not accepted.

Mal reported that Tips and Techniques from previous newsletters have been added to our web site. He has put together a list of all previous member challenges since 1999 and is putting together photos of member challenge pieces over the years.

Wally reported \$1275 in treasury. \$510 received from Christian Burchard demo. There were 34 attendees. Thanks to Don, Ian, Bob and others who helped setup for demo. Rich Friberg quickly solved a lathe problem during the demo. Lessons learned for future demos - Check Lathe for proper operation, Obtain an easel and large paper pad. Do a better advertising job. Turners for future demonstrations were discussed. The sphere turned at demo was auctioned for \$18.

The heavy small General lathe that does not get used much was sold to Mike Dempsey for \$150.

Ron the Librarian reviewed the procedures for checking out library items.

Bob the Web Master reported on Alan Lacer demo at NBSS, The web site forum had 80 visitors in one day and suggested more of our members join.

Hank mentioned having a collaborative with six turners from CNEW. Ken suggested we purchase a coring device, but there was not much interest from members.

Saturday Hand's On at Hanks was set for April 11th.

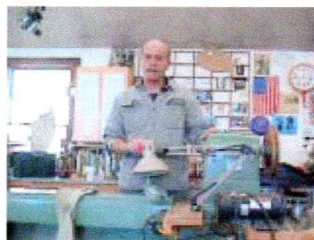
Member Challenge details can be found at this site:

<http://www.cindydrozda.com/Assets/html/CSSportal/handouts.html>

Welcome New Members

Harry Keough from Quincy
David Parks from Somerville

Christian Burchard's Demo



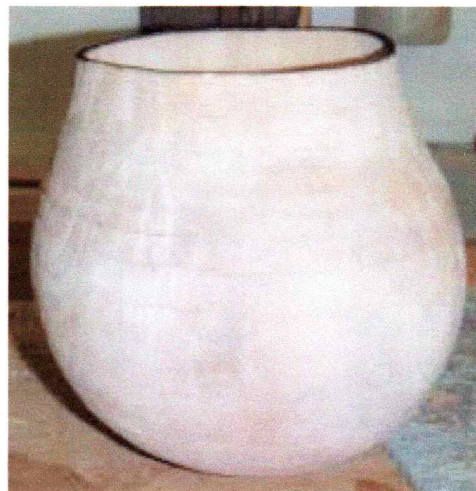
Christian's demo on camera



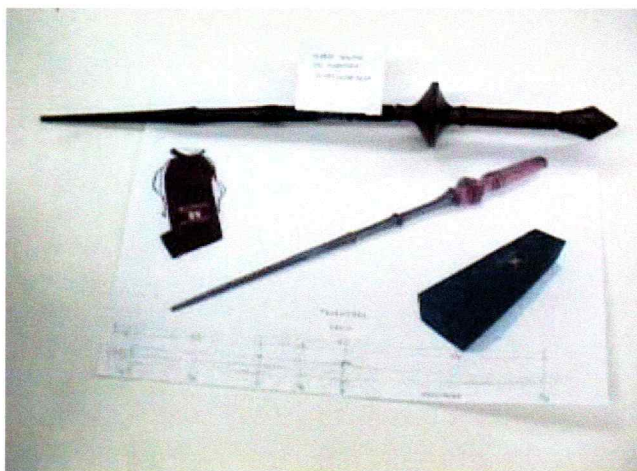
Turned sphere in process



Angles of Attack!



Christian Burchard's finished basket piece
Note thin edge scorched with propane torch



Sid's Ebony and Purpleheart Harry Potter Wand with
story stick drawing

Woodturning Demonstration by Christian Burchard



Members and guests enjoyed an excellent Saturday demonstration and talk covered in detail on our web site and with notes supplied at March meeting by Don Diedrich

More Show & Tell - March 2009



Harry Keough's pens, bottle stopper and small box



Steve Wiseman's January Challenge pieces and 2 pens



Wayne Miller's coffee grinder



Jim Denker's carvings



David Rice's boring bar



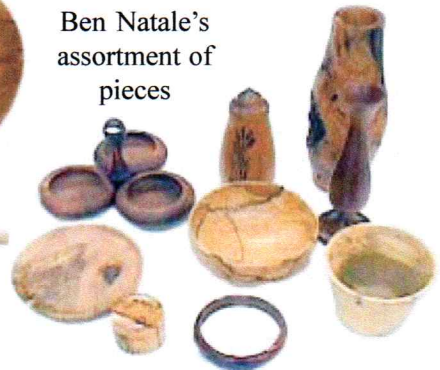
Ben Natale's assortment of pieces



Richard Gramatica's 3 pens



Jeff's earrings and stand



Show & Tell

March 2009



Paul O'Neill's large Curly Oak and Walnut bowls



Ken's cored walnut, Cherry burl pieces w/aniline dye, & Yew female 5 axis figure



Wally's root sphere and bowl from laminated veneer lumber



Nigel's large White Birch bowl



Richard's small Maple Burl bowl



Bob Trucchi's Black Walnut bowl



John Destrampe's Tiger Maple bowl



Ian's Norwegian Maple bowl and detail view



Jeff's Osage Orange sphere and Oak Burl bowl