
AS THE WOOD TURNS

· August 2000

Slicing a Loaf of Log



Jim Taralli makes first cut on Wally Kemp's huge spalted maple log
Note hands at left gently lowering slice to prevent it from getting "hurt"

When you have a 40" diameter log to be cut for turning blanks and only have a 12" chain saw - what to do? - you call a woodturner friend with a 24" saw! That's what Wally did. And on a sunny Monday morning, with other woodturners on hand to help, Jim Taralli with his wife Gale proceeded to dissect the log into little pieces.



Helpers?

Jim came well prepared with saws, extra chains and sharpening tools, and a truck to haul away his loot (reward). His expertise in getting the most usable blanks from the log was a pleasure to watch. Wally supplied soft drinks and sandwiches for the troops. The local chipmunks watched the proceedings in awe from the nearby stonewall.

2000 MSSW Officers

President - Hank Cahill (781) 878-0234
Vice President - Felix Troiano (781) 749-1713
Treasurer - Wally Kemp (781) 871-1390
Secretary - Mal Partridge (781) 843-3883
Librarian - John Murphy (781) 834-1179
Newsletter - Mal Partridge (781) 843-3883



Next Meeting

Tuesday, August 22, 2000
7:00 P.M.

At Hank Cahill's *Dust Bowl*
Refreshments by: Roger Hill
Member Challenge: A turned object
Demonstration: TBD

Meeting Minutes

The July meeting was called to order at 7:18 at Hank Cahill's Dust Bowl

President's Report

Hank reported receiving copy of the Central Coast of CA newsletter from George Paes. He met George again this year at the AAW Symposium. Information on a symposium at Arrowmont School of Arts & Crafts was also received and distributed. The August issue of Woodturner magazine was made available.

Treasurer **Wally Kemp** reported \$909.00 in treasury.

Librarian **John Murphy** reported "Faceplate Turning" was overdue from Jeff. He also has his Delta lathe for sale at \$750, as he is buying a new 20" General lathe.

General Business

Richard Friberg is displaying at a number of locations: Marina Bay August 5 & 6, North Scituate Heritage 2000 also August 5 & 6, and a solo show at Summer House Gallery, West Falmouth, MA August 5-19th.

Wally reported Audubon Farm day demonstration scheduled for Saturday, October 14th, rain date Sunday. Our Annual South Shore Audubon Show will be held from October 21st thru 2nd week of December.

Hank has made arrangements to display the Gnome Rotary Engine and other turnings by members in a display case at Abington Town Hall.

Hank reported that Channel 56 is interested in doing a video. He also investigating how we can receive grant money for future efforts in promoting woodturning.

Mal presented **Wally** with a kit of drafting triangles to assist him in aligning his parting tool!

AAW Symposium Reports

John Murphy: Instant gallery exhibits were fantastic. The Chapter Challenge was poorly run. They didn't check conformance with rules until second day. Poor judging by popular vote. Attended many sessions and found some with uneven instructions, some very business like. Looking forward to Providence.

Richard Friberg: Lots of new ideas, couldn't wait to get home and try them.

Roger Hill: Overwhelming - too big, but well organized. Had car trouble on way down.

Bob Iuliano: Flew down for \$250 round trip. (as cargo?) Purchased demo Powermatic lathe for 25% off. **Emilio** handled return shipping in his wagon.

Mal Partridge: The Challenge brochure handouts were well received and I believe helped in our receiving the third place award. They were placed at various locations as well as at our display. The method of voting and counting was skewed because many votes were entered on the first and second day before some entries were disqualified for not conforming to the rules. Three points were awarded for first place, two for second, and one for third. Disqualified entries were merely crossed off voting slips, but other entries were not moved up to new place, which changed total counts. I had many attendees express their disappointment in our not placing higher. Check the web site:

www.turningwood.com

for symposium and interesting collaborative comments.

The new Beall Tool Masterpiece Model "A" Lathe attachment converts a small lathe to an ornamental turning device. Great item - check it out at: www.bealltool.com Demo at show by J.R.Beall himself.

Demonstrator Myron Curtis took a liking to our Gnome Engine and we spent some time together reviewing the instant gallery, turning techniques and a new Delta Lathe he is critiquing.

Enjoyed the demonstrations on turning photography by J.Donaldson and coloring wood by Irene Gafert. Some of the "Name" turners demonstrations were boring. The demonstrations by vendors, especially Tony from Sorby, were very helpful, being one on one.

Hank Cahill: The rental car we took to NC was a Subaru Outback, not what we wanted and it turned out to be an uncomfortable trip. Tried to get it changed at Charlotte airport, but no luck.

The instant gallery was great with 1400 pieces on display. Enjoyed the programs by Mark St.Leger, Tom Crabb (Turning on bias) and Binh Pho, who was great. Also liked the vendor demonstrations,

AAW Symposium Overview

The city of Charlotte, NC was very clean, attractive, and hospitable. However as **Roger Hill** mentioned there was very little to do downtown in the evening. The local and hotel restaurants were expensive. The hotels closest to the Convention Center seem to be more expensive. The Marriot had a great breakfast buffet for two included with room for an additional \$10.

The Convention Center was large and demo rooms had plenty of seating. The AAW volunteers did a great job. Lighting was excellent on the collaborative projects and instant gallery. Flash wasn't needed on most cameras, and thousands of pictures were taken. We had many videos taken of the Gnome Engine rotating.

The vendors tradeshow was located at the lower level with a snackbar nearby. Plenty of exotic wood for sale and sandpaper selling by the pound. Prices went down on the last day. Vendors from England and New Zealand were present.

Prior to the banquet a cocktail hour complete with very long lines was held. Not everyone was able to get a drink. Probably just as well.

The banquet was excellent, with salad, filet mignon and chicken parmesan on each plate with potatoe and vegetables. There was water and ice tea at each setting with chocolate mouse desert staring at us throughout the meal. Coffee and friendly conversation completed the meal.

The banquet hall was huge and as we were sitting near the back it was difficult to see the projected information displayed on two screens at the front of the hall. It was also difficult to hear the speakers and bidding during the auction. Some bids were not acknowledged. The collaborative awards were mentioned, but no recognition of the participating members, which would have been appropriate.

The auction went on forever and many people left before it was over. The original bidding on the Chicago collaborative project did not meet the minimum bid, but later in the evening when most had left the hall it was rebid and purchased. There was another item purchased without bidding and the amount turned over to AAW for their Education Fund..

The Symposium gave us a opportunity to meet many interesting and knowlegable woodturners and their spouses. The instant gallery presented so many varied and unique pieces it was mind boggling. Woodturning and woodcarving seem to be becoming a combined art. Some pieces which were originally turned do not retain the turned look after carving. Perhaps a new word should be coined for this art - *woodturncarving* - created by a *woodturncarver*! If you carve then turn you would be a *woodcarvturner*! Also with all the colored and decorated turnings in vogue they would be created by a *woodturndesigner*! This can go on and on - if you paint a design on your turning you would be a *woodturnarter*! (Don't say that too fast)

We are all looking forward to AAW Symposium 2002 to be held in our territory - Providence, RI. The short distance to travel will be appreciated. Racing along with those trucks at 80 mph was interesting. You could save gas by using their draft, but the only scenery visible would be two large doors and a sign "don't tailgate".



Debate



Cutting bowl blanks



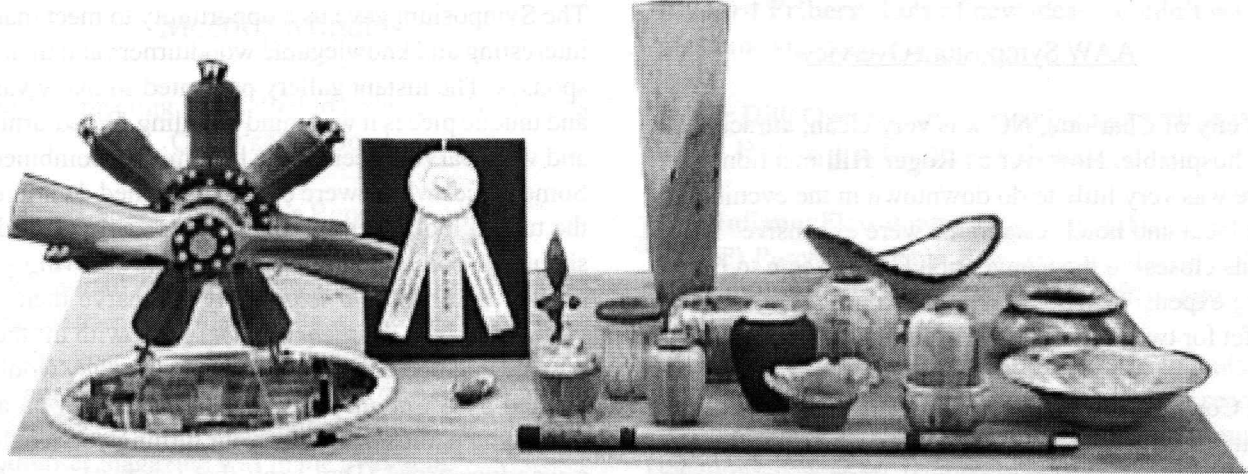
Another slice

Notice

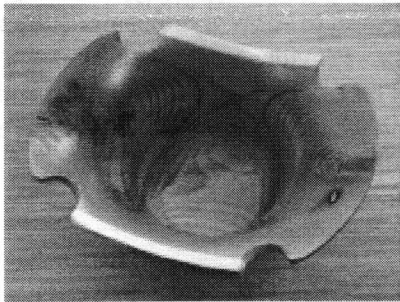
The demonstration by **Jacques Vesery** has been rescheduled to Saturday the 13th of January 2001 with snow date Saturday the 20th.

Note to Ernie: The Captain says "Starboard"

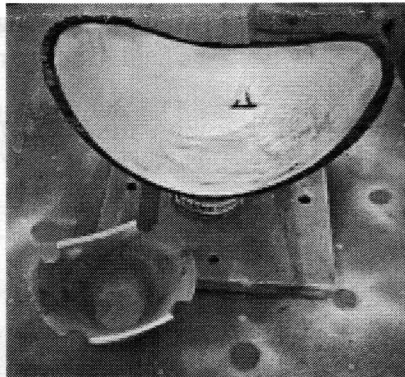
July 2000 Show & Tell



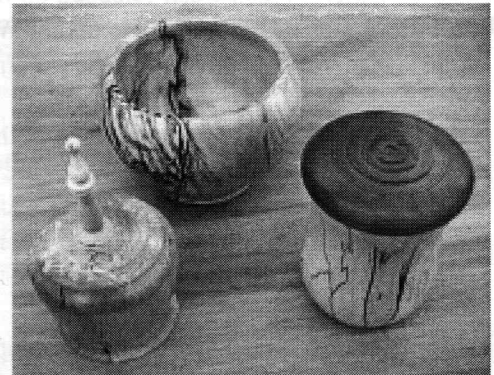
Gnome Rotary Engine with 3rd place ribbon Jeff's pool cue under construction - cherry and ebony



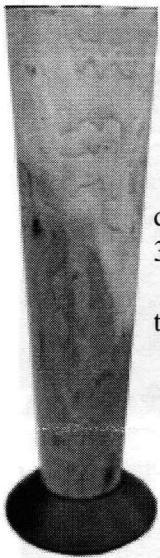
Hank's nicked corner cedar bowl



Hank's maple bowl set up for spraying
Was in box drying for 5 years



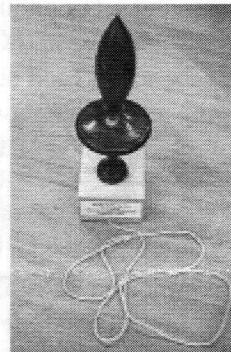
One of Hank's pieces has fake spalting - can you tell?



Wally showed "What to do with a log" he drilled a 3/8" hole first with a shell auger then a 1 1/2" hole thru with guided spade bit - finished inside with hook tool to prevent checking

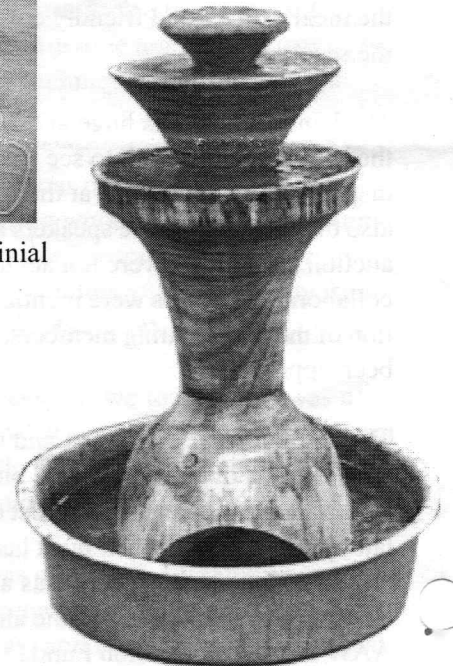


Ray's canary wood plumb bob

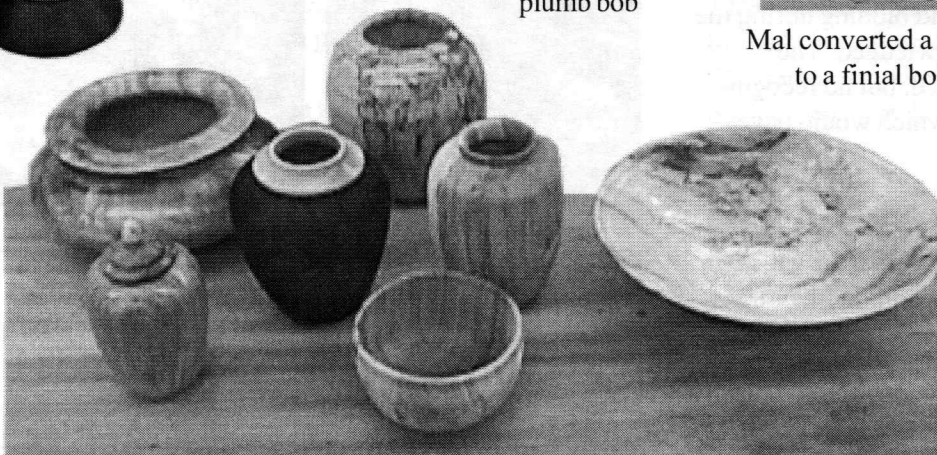


Mal converted a finial to a finial bob

Emilio demonstrated surface tension with his fountain



Emilio's fountain needed undercuts on edges to create waterfall effect



The Richard Friberg production line - must be getting ready for his shows
The black vase has carvings using Dremel tool and woodburning - nice effect