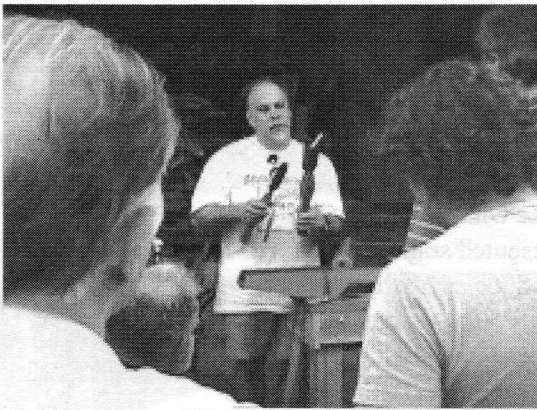

AS THE WOOD TURNS

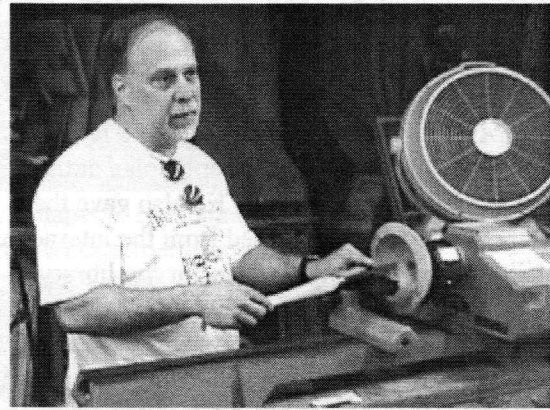
August 2001

Shear Delight !

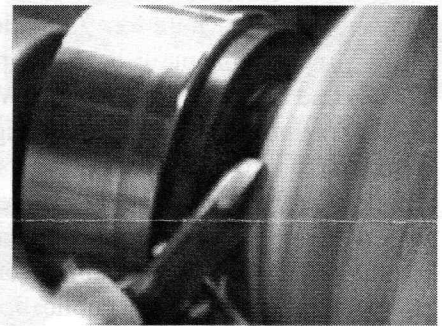
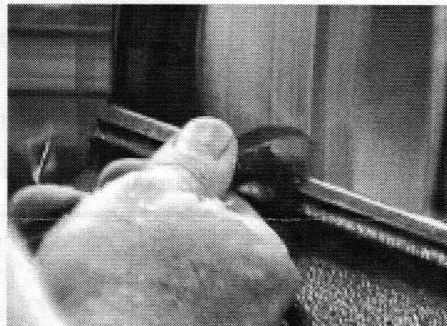
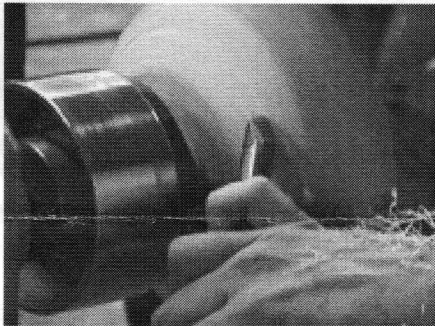
Angelo Iafrate Demonstrated Shear Scraping



Tools reviewed before an attentive audience



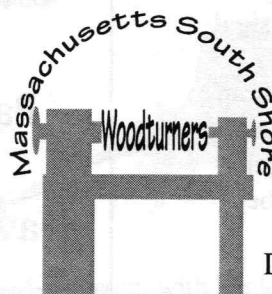
Principles of shear scraping explained



Note the thin stringy chips generated by the tool - Members were given the opportunity to try it and produce that "Oh So Smooth" finish!

2001 MSSW Officers

President - Hank Cahill (781) 878-0234
Vice President - Felix Troiano (781) 749-1713
Treasurer - Wally Kemp (781) 871-1390
Secretary - Mal Partridge (781) 843-3883
Librarian - John Murphy (781) 834-1179
Newsletter - Mal Partridge (781) 843-3883



Next Meeting

Tuesday, August 28th, 2001, 7:00 P.M.

At Hank Cahill's *Dust Bowl*

Refreshments by: **Jeff Keller**

Member Challenge: **Tool Handle**

(With or without a Tool)

Demonstration: **Deep Hole Boring by Wally**

Meeting Minutes

The meeting was called to order at 7:05 pm at Hank Cahill's Dust Bowl

President's Report & General Business

President **Hank Cahill** was on a trip to Denver and points west and was unable to be present in person, but we received a surprise call at 7:15 from Hank phoning in from Wyoming!

Vice President **Felix Troiano** opened the meeting by introducing two guests, **Paul Foglia** from Brockton and **Dave Fountain** from Hanover.

Felix reported that no correspondence was received.

Secretary **Mal Partridge** made available tent cards for members to use with their pieces for display at the Audubon exhibit or other venues. He also gave the Chain Saw Safety Manual, copied from the internet as suggested by **Paul Marks**, to **John** for the library.

3D photographs taken by the Seguin Brothers, the Gnome rotary engine designers and manufacturers, in the early 1900's were shown by **Mal** and can be seen on the Internet at: <http://past3d.free.fr/home.htm>

Mal showed a brochure for "A Guide to Useful Woods of the World" being published by Forest Products Society and edited by International Wood Collectors Society members. Each of the 279 highlighted species is described in a two page Wood Data sheet in complete detail. The book contains many more features of interest to woodturners. It was agreed we would purchase a copy at the pre publication price of \$34.95 plus \$7 shipping. Expected publication date is August 31, 2001.

Librarian **John Murphy** reviewed what's out and reported that Lenny Manderville had quite a few checked out. Being a new turner that's a good sign!

John also mentioned a visit by a fellow turner from Ohio to his home who has invented a new type of respirator. A brochure was distributed showing the details of the Resp-O-Rator device which will be available at the end of the year for about \$40.

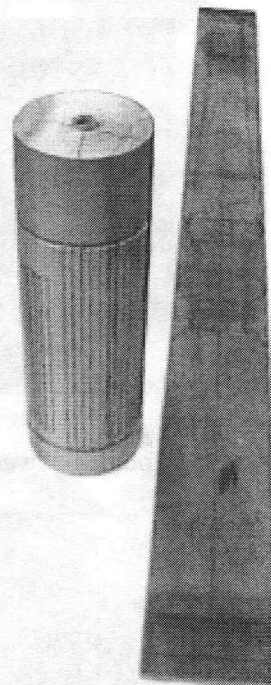
Treasurer **Wally Kemp** reported \$727 available in treasury. He also told us about an adventure he had in Accord Park looking for a huge oak burl. He found it, but hasn't figured how to get it out of the woods.

A discussion on cutting logs based on the brochure **Wally** passed out at the last meeting was started by **Lenny Manderville**. A clear acrylic template of various bowl sizes was suggested by **John Shooshan** as a means to mark the log for surgery.

Roger Hill won the member challenge raffle, **Tom Holland's** spatula.

A wood swap raffle was also held.

Wally's Show & Tell was how he turned a 4 foot lamp post for a customer. The template shows the victorian style "bed post" shape which includes a base with routed reeds which presented some problems to produce accurately. A sample turning was routed to test the procedure. The lamp was made in two pieces with a 2" dowel tenon to connect them. A hole was bored through both sections and Wally will show us how at the August meeting.



Mystery Piece

Your editor's notes don't indicate who turned this nice piece. Credit will be given in next newsletter.

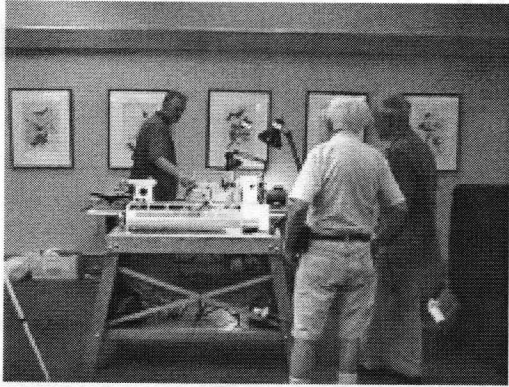


Welcome New Members

**Paul Foglia from Brockton
&
David Fountain from Hanover**

Robert Rosand Demonstration At Ocean Woodturners

A great location, a five hour demonstration which included a buffet lunch all for \$15 -WOW!



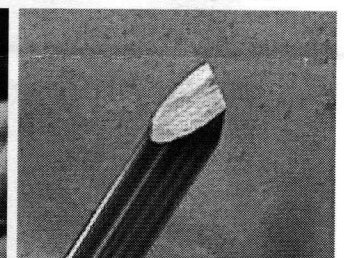
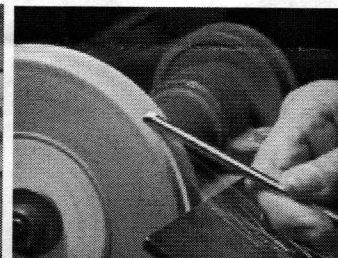
Ernie & Wally get some advance tips



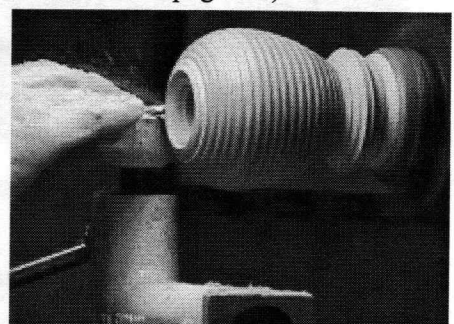
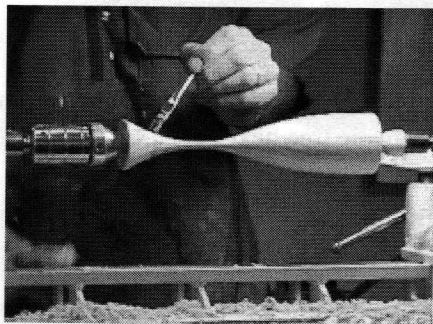
Bob's famous ornament



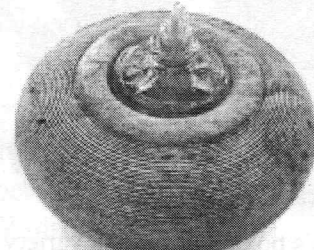
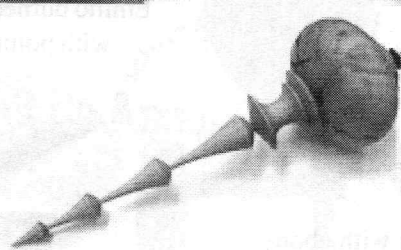
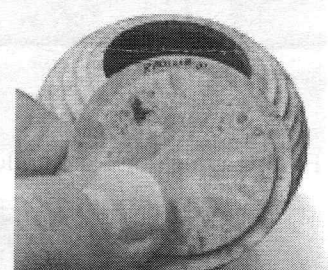
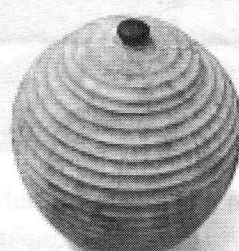
Starting to turn ornament globe



Turning handle for a round skew - grinding the "screwdriver" shape on HSS shaft and final skew angle as shown (See Bob's article "Making a Skew" in American Woodturner Summer 2001 page 37)



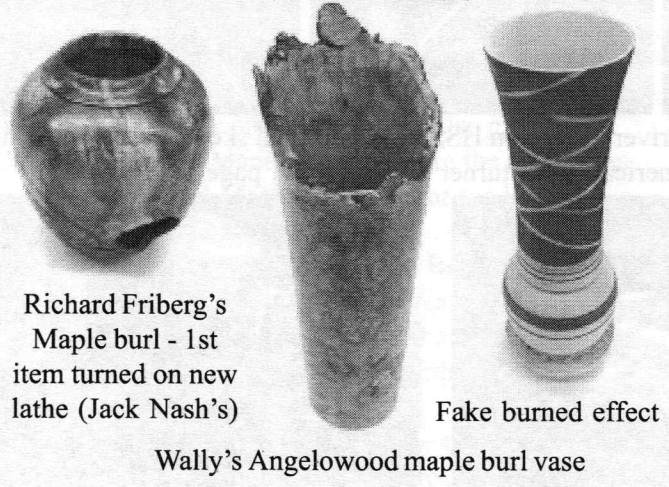
Candle stick receiving sanding sealer & turpentine coating Bob uses all the time - Turning lidded box with coves He uses small spindle gouge honed just before cutting coves - during turning he sometimes uses wax for lubrication



Ornament globe and finished ornament with icicles and top - Confetti oil lamp Videos showing Bob in action are available from AAW

Show & Tell

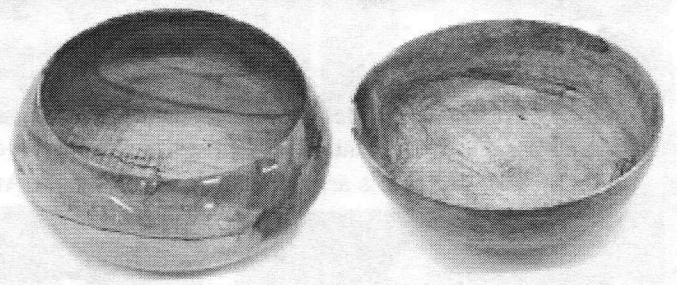
July 2001



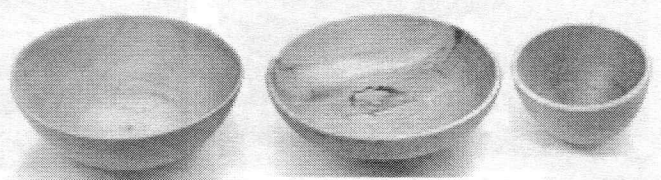
Richard Friberg's
Maple burl - 1st
item turned on new
lathe (Jack Nash's)

Wally's Angelowood maple burl vase

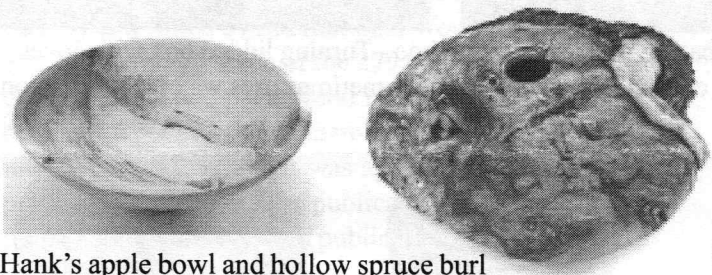
Fake burned effect



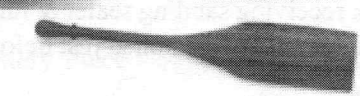
Jeff's Richwood bowl - spar varnish finish & bowl from
sugar maple tree next door



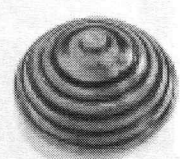
Tom Holland's unsanded bowls and spatula (sanded)



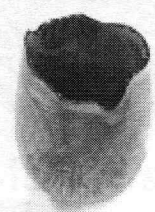
Hank's apple bowl and hollow spruce burl



Angelo's box elder vase, a variety of 7 nuts with ebony
trim (note 2 loose rings on one) & black oak burl



Emilio burned wood rings
with pointed wood



Nice Cherry burl



Hickory plate and maple burl bowl by Emilio

