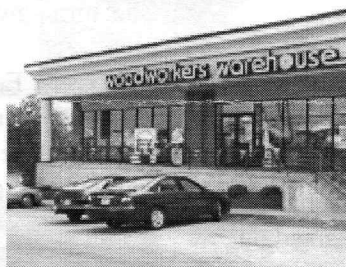

AS THE WOOD TURNS

August 2002

A smile tells it all!



Ernie helps a young prospective turner while pumping his pedal lathe



And his dad gives it a try at our turning demonstration at the Avon Woodworkers Warehouse

2002 MSSW Officers

President - Hank Cahill (781) 878-0234
Vice President - Felix Troiano (781) 749-1713
Treasurer - Wally Kemp (781) 871-1390
Secretary - Mal Partridge (781) 843-3883
Librarian - John Murphy (781) 834-1179
Newsletter - Mal Partridge (781) 843-3883



Next Meeting

Tuesday, August 27th, 2002
7:00 P.M.

At Hank Cahill's *Dust Bowl*
Refreshments by: Sidney Katz
Member Challenge: Coasters
Demonstration: TBD

Meeting Minutes

The meeting was called to order at 7:00 pm at Hank Cahill's Dust Bowl

President's Report and General Business

Hank received a nice thank you letter from AAW's Mary Lacer and Eunice Wynn for his and our Chapters efforts at the RI Symposium. He thanked members and volunteers for their help.

The *South Shore Art Center's* call for proposals for an upcoming fall exhibition - "Architectural Ornamentation: Fragments & Elements" Oct 4 - Nov 3, 2002, was received. The exhibition will consist of two parts:

1. The presentation of *Art as Architectural Elements & Details* will be an assemblage of the artists ideas in a 4' x 4' shadowbox. Deadline for delivery of support material is September 6, 2002 with completed panels to be delivered by October 1.

2. *Columns* - There will be a colonnade of 10 columns marching down the center of the Bancroft Gallery. They must be exactly 8' tall with a 4' x 4' plywood base and made from most any construction material. The deadline for submitting a proposal for the column is Monday, August 12, 2002.

Contact SSAC, Cohasset, 781-383-2787 for details.

The Surrey newsletter from England had an article on how to spalt wood.

Treasurer **Wally Kemp** was not present. **Mal** will be submitting newsletter expenses of \$251.56 for last 6 months to him.

Librarian **John Murphy** reported everthing up to date. Currently there are 6 videos and 7 books checked out.

Member **Janet Collins** has a 6 page article in the July/August issue of *Fine Woodworking* magazine titled "Making Traditional Dovetailed Drawers".

The *Cracker Barrel Faire* to be held September 12-15 in Wrentham again extended an invitation for us to demonstrate. (They offered to supply the wood)

Beaver Woodworking is now selling General Lathes and has them in stock. Contact Larry Fortin.

Mal announced that the *Woodworkers Warehouse* store in Avon will be holding a SHOW & SALE on August 16th & 17th. We have been invited by Manager Bob Malcolm to display the Gnome Rotary Engine and Rhode Island State Capitol Dome collaborative projects and to demonstrate woodturning. They will have a Jet lathe available.

Maple plaques with a picture of the RI State Capitol Dome project were fabricated by **Mal** and given to each member of the collaborative team. **Bernie** was presented with the Independent man he carved mounted on a base representing the top of the dome cupola.

The Capitol Dome was on display at the meeting for those members who had not seen it completed.

AAW 2002 Symposium, Providence, RI

Jeff won a set of 6 Delta tools. **Hank** mentioned that there were fewer collaborative projects this year. The trade show was the largest to date. **Sid** commented on the 11 sessions he attended, including **Angelo's** and **Mal's**. MSSW handouts for the the symposium were made avaiable to members who did not attend. **Hank**, and other members, talked about the remarkable turning method of Japanese turner Masaaki Hirio.

The instant gallery had some remarkable pieces on display and they were discussed in some detail. **Wally Kemp's** inside out turning was declared "one of the best he has ever seen" by Steve Worcester on his web site: turningwood.com

The AAW Education Program has grants available for teaching beginners in woodturning. Members could teach in their own shops. **Hank** will get details on applying for grants.

Welcome new member

Jim Flannery

from

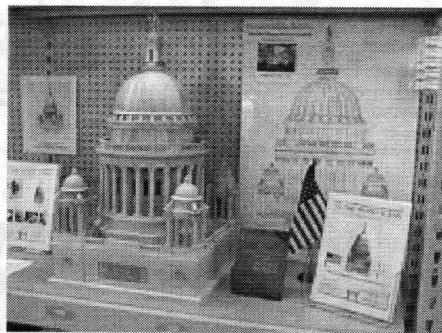
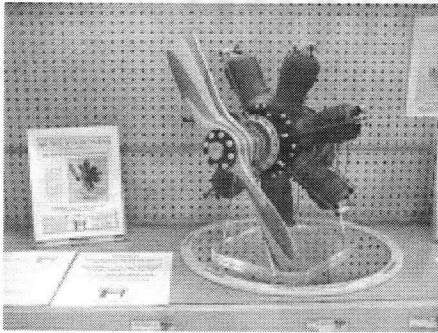
Marshfield, MA

One good turn -

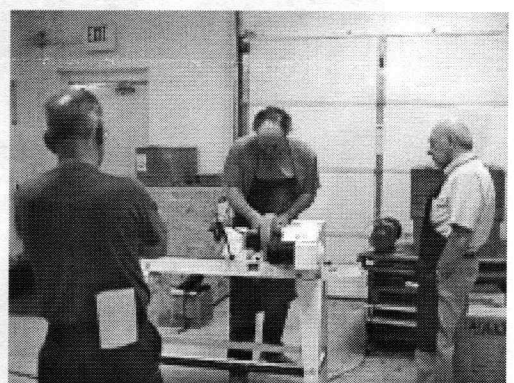
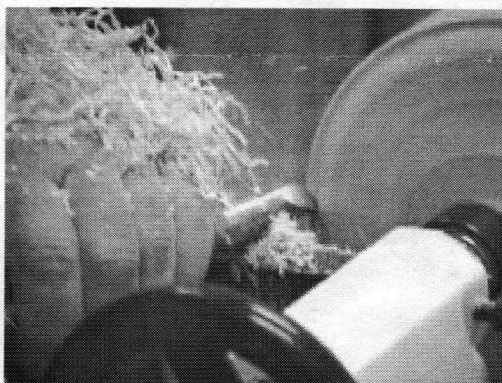
A special thanks to Bob, Paul and Fran and others who made our Woodworkers Warehouse demonstration a pleasant experience.

Woodworkers Warehouse Demonstration

Members Hank Cahill, Dave Hutchins, Ernie Grimes, Jeff Keller, John Murphy, Mal Partridge, Ron Robertson, and Felix Troiano joined the staff of the Avon, MA. Woodworkers Warehouse to present the art of woodturning

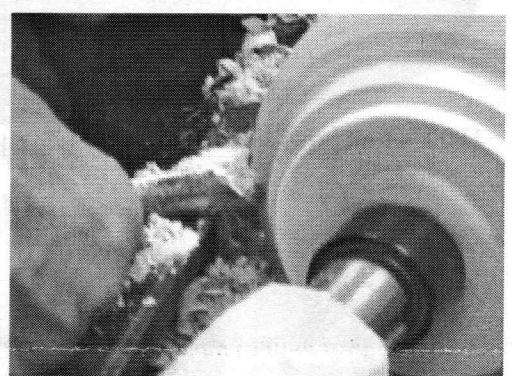
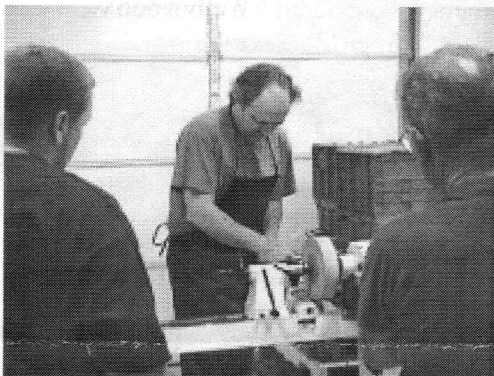


Our collaborative projects and turnings displayed by members attracted a lot of attention



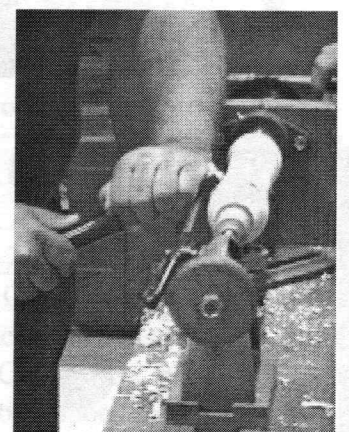
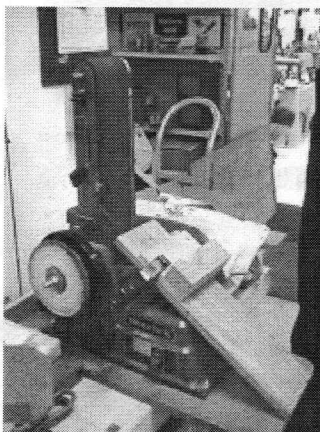
John Murphy demonstrates turning a bowl

Felix Troiano watches Jeff Keller turning



Interested customers - new members?

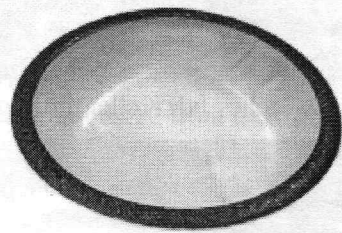
Hank watches Jeff's use of the gouge



Ernie's tool grinding setup Store employee Fran O'Donnell takes a *turn* as Ernie sips coffee and pumps his pedal lathe

Show & Tell

July 2002



Hank's first bowl since April



Richard's mini hat



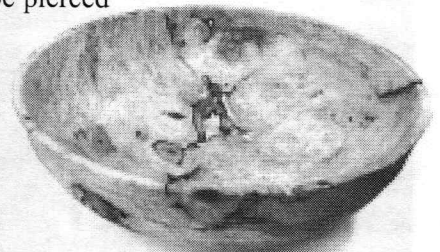
Cherry vase to be pierced



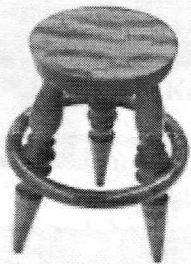
Wallywood vase



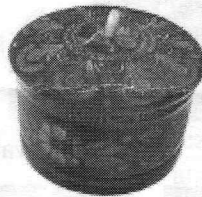
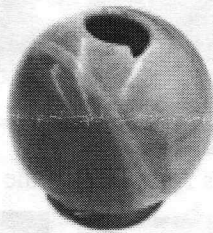
Horseflesh vase



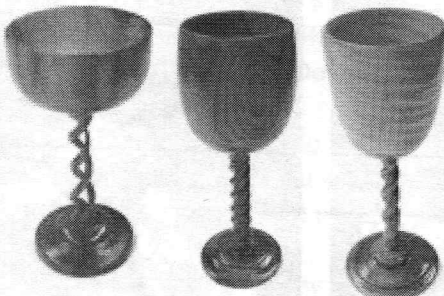
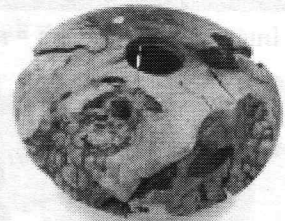
Bowl for logger in PA
Angelo's S & T



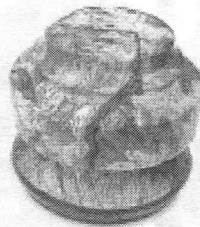
Lenny's stool, microwaved piece and \$8 carved box find



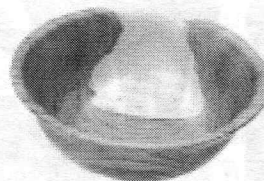
Ron's red box and burl from symposium



Jeff's goblets with a twist or two (or four)



Ken's burl



Sidney's cherry bowl and white birch plate

