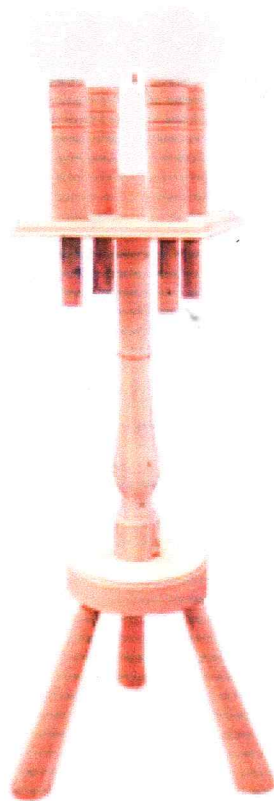

AS THE WOOD TURNS

August 2006 - Issue 111

Lacemaker Lamps



1780



2006

Wally Kemp's Lacemaker Lamp stand completed through the magic of Photoshop

2006 MSSW Officers

President - Hank Cahill (781) 878-0234
Vice President - Richard Friberg (508) 378-2436
Treasurer - Wally Kemp (781) 871-1390
Secretary - Mal Partridge (781) 843-3883
Librarian - Leonard Mandeville (508-586-7679)
Newsletter - Mal Partridge (781) 843-3883
Web site: <http://www.mssw.sitelinker.org/>



Next Meeting

Tuesday, August 22, 2006, 7:00 P.M.
At Hank Cahill's *Dust Bowl*
Refreshments by: Jeff Keller
Member Challenge: Single Lacemaker lamp
See page 2 for details
Demonstration: TBD

Meeting Minutes

The meeting was called to order at 7:00 pm at Hank Cahill's Dust Bowl

President's Report and General Business

Guests present were Art Sullivan from Stoughton and Mac Hornecker from Arkansas.

Hank received no correspondence, but Jesse Meyer brought in a number of Industrial Abrasives catalogs for distribution. He recommended the 10lb. mixed boxes for a "lifetime" of sandpaper!

Mal circulated binders with information on salt pigs and a Project Gutenberg 1919 Course on Woodturning for teaching students which had some interesting projects.

He also showed a 5 led light available from Bed, Bath and Beyond for \$9.99. Similar to the Dot-it led that Nigel had at last meeting attached to tool rest, but with two brightness settings, tilting and velcro or screw mounting.

Mal submitted newsletter expenses of \$237.05, for four months, to Wally.

Wally reported \$630 in treasury. He purchased 25ft. extension cords for use with our lathes at demonstrations. He also purchased and installed a variable speed drive kit on the Jet Mini lathe that had a failed motor.

Lenny reported 3 videos have been out since June. Members are requested to please return to library.

Hank reported that Jean LeGwin was seen at AAW Symposium and is on voting list for AAW board.

There were 6 members on the Sassafrass cutting team. Only a few good pieces were obtained.

The balance of the Liberty Tree wood now stored at Hank's may be moved to the Brockton Historical Society.

Ken and Andy reported that the Brolly Bird coloring and additions are still in conference (discussion stage).

Bernie reported on the Beth Ireland demo at Cape Cod Woodturners.

Bob Sutter had two 8" grinding wheels for sale.

Andy Osborne reported on the Yankee Woodturners Symposium to be held at Wesleyan University in Middletown, Ct. June 1,2,3, 2007. It has been accepted as an AAW Chapter. Committees are being set up and a sign up sheet was available for members to volunteer. If you are interested in contributing to this New England event and have not signed up, contact Andy Osborne or Hank.

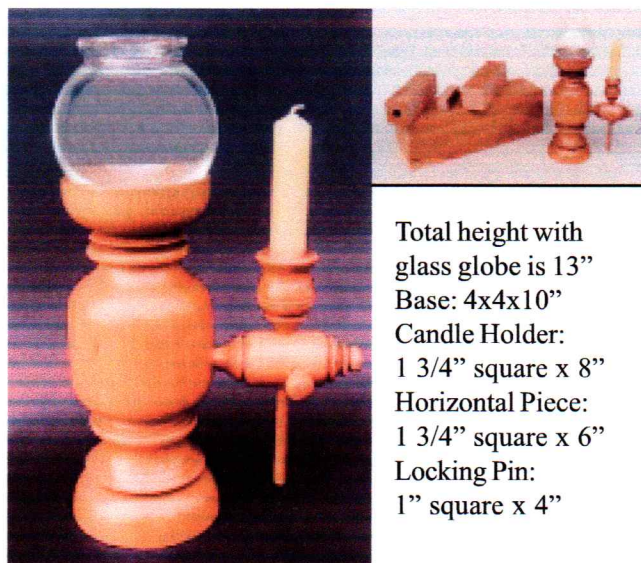
Jeff reported on his visit to the Penn State Arts Festival. One artist used hot sand on inlaid boxes for shadow effect.

Wally reported seeing two of Janet Collins platters at North Bennet Street School store. Richard Friberg is teaching a one week Timber Frame Course. Workshop for 13 students at Arlington NBSS campus.

The **Corn Festival**, at Norwell Science Center, will be held Saturday, September 16th. (Rain date on the 17th) We demonstrate and sell each year at this Festival. If interested in participating contact Jeff Keller at E-mail JKeller@rejournal.com or phone 781-878-7310.

August Member Challenge

Single Lacemakers Lamp



Total height with glass globe is 13"
Base: 4x4x10"
Candle Holder:
1 3/4" square x 8"
Horizontal Piece:
1 3/4" square x 6"
Locking Pin:
1" square x 4"

Lamp made by Eugen Schlaak. Enlarge image to 13" height to duplicate this lamp or be innovative and design and turn a lamp that performs the same task.

A 4" dia. glass bowl as shown above is available at Michael's Arts and Crafts for \$1.00 #76440001983. Made by Anchor Hocking Co.

Bob McNee Demonstrated the Art of Metal Spinning



Album of Bob's work with forms and chucks use in metal spinning. He worked at Reed & Barton



Bob showed a large trophy in process and explained it's fabrication



PGA Golf Tournament Trophy details are pointed out to Wally



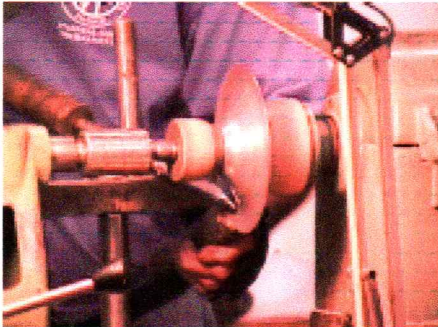
Forms over which the metal is shaped are made from dogwood and mdf



A form is mounted to face plate on Hank's woodturning lathe adapted for metal spinning



Aluminum blank is pressed between tailstock and form. Tailstock was wedged to create more pressure



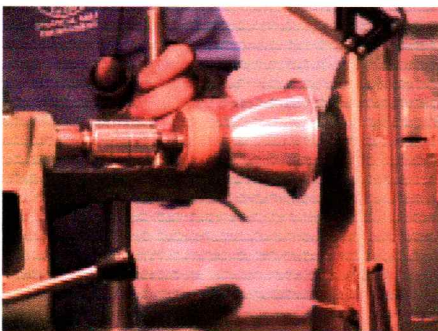
Bob makes his own tools and is shown forming initial shape



As more pressure is applied to the material it slowly flows to the form



The cup is nearing final shape and Bob will start rolling rim



Bob smooths the outer surface of the cup - the rim has been partially formed



The rim has been formed and the cup is ready to be removed



The finished piece. Bob turned (spun) three cups during his demonstration

Don't try this at home on your wood lathe. As Bob explained the spinning lathe is designed for the stresses involved.

Show & Tell

July 2006



Jeff added a knob



Liberty Tree bowl by Jeff



Bob's oak salt pig and dual bowl



Jeff's oak burl compote



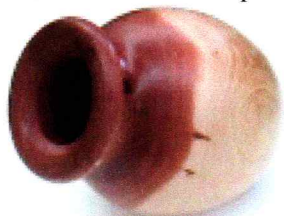
Andy's ??? piece



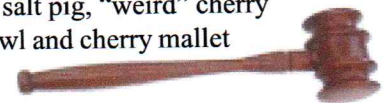
Ian Manley's 565 piece segmented vase for Daughter's Birthday



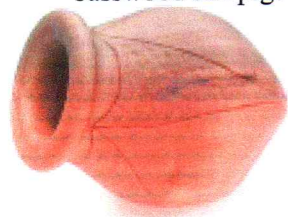
Ben's salt pig, "weird" cherry bowl and cherry mallet



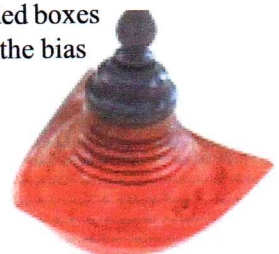
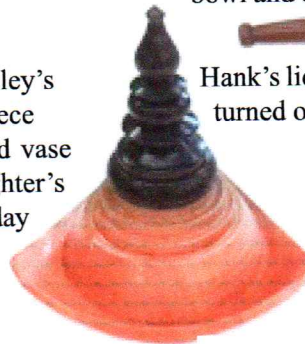
Jim Flannery's cedar and basswood salt pigs



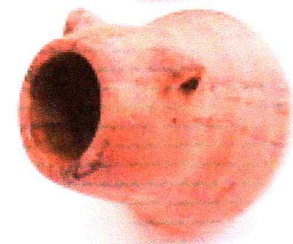
Hank's lidded boxes turned on the bias



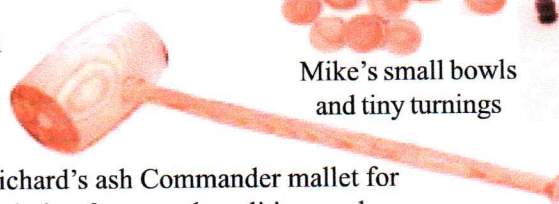
Paul O'Neill's walnut bowl



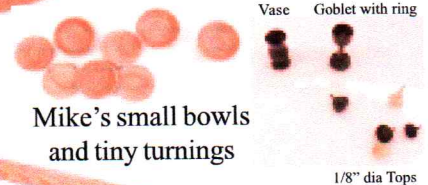
Vase Goblet with ring



Bernie's salt Pig and inlaid box



Richard's ash Commander mallet for timber frame or demolition work

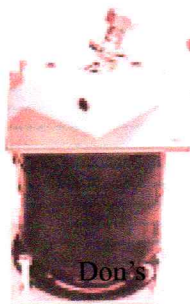


Mike's small bowls and tiny turnings

1/8" dia Tops



Don's Flight Simulator components



Don's



Jeff's purchased letter opener



Ken's maple burl "turtle" and cherry piece for daughter's wedding

