

---

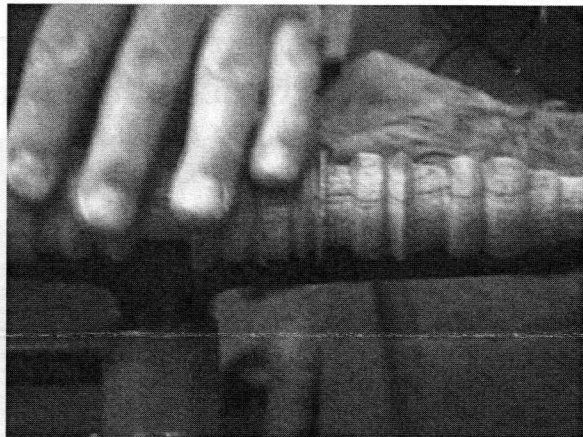
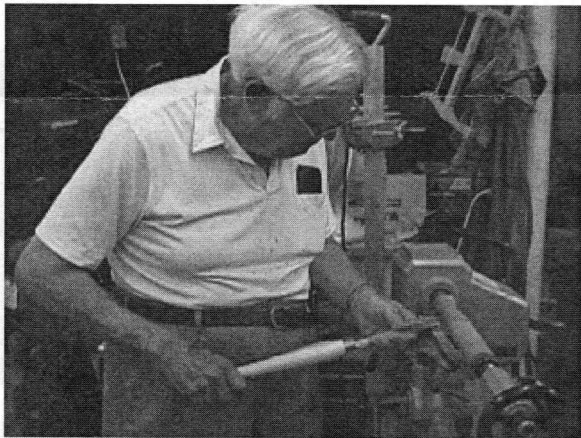
# AS THE WOOD TURNS

---

August 2007 Issue 122

---

## Well I'll Bedan



Bob Sutter demonstrated how to use the Bedan tool. Touching and feeling is important after turning!

### 2007 MSSW Officers

**President** - Hank Cahill (781) 878-0234

**Vice President** - Richard Friberg (508) 378-2436

**Treasurer** - Wally Kemp (781) 871-1390

**Secretary** - Mal Partridge (781) 843-3883

**Librarian** - Leonard Mandeville (508-586-7679)

**Newsletter** - Mal Partridge (781) 843-3883

**Web site:** <http://www.mssw.sitelinker.org/>



### Next Meeting

Tuesday, August 28, 2007, 7:00 P.M.

At Hank Cahill's *Dust Bowl*

Refreshments by: Jeff Keller

Member Challenge: String Pull Top

Drawing by Ben Natale available by E-Mail

Demonstration: TBD

## Meeting Minutes

The meeting was called to order at 7:00 pm at Hank Cahill's Dust Bowl

### President's Report and General Business

Guests Norm Mancuso and Dave Eaton have become members.

Hank received catalogs from Packard for distribution. He announced that we would have two demonstrations, Bob Sutter would demo the Bedan tool and Norm Mancuso would demonstrate end grain box turning.

Mal gave a color poster to Nigel with photographs of the Hand's On Party he and his wife Gill held for MSSW members and their wives. A great time was had by all who attended. Members showed their appreciation with a loud clapping of worn craftsmen's hands.

David Rice has agreed to take charge of the members badges for the meetings.

Mal thanked Bob Trucci for the pictures his wife took at Nigel's Party which were E-Mailed to members.

Lenny the Librarian would like to have our turning tapes converted to DVD's and Sid volunteered to burn them.

### Old Business:

Yankee Symposium will be held again in 2011. They broke even this year and \$1000 was returned to Wally for our treasury. David Rice and Ian Manley won volunteer raffle gift certificates.

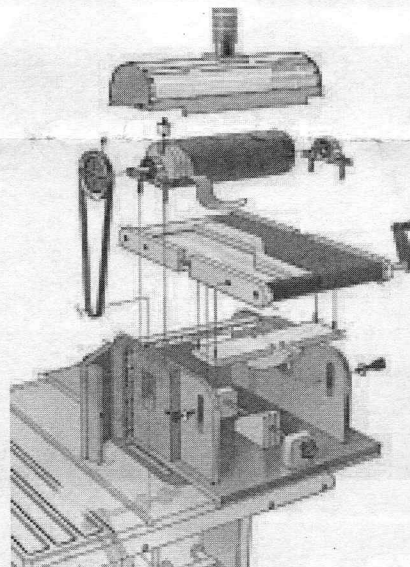
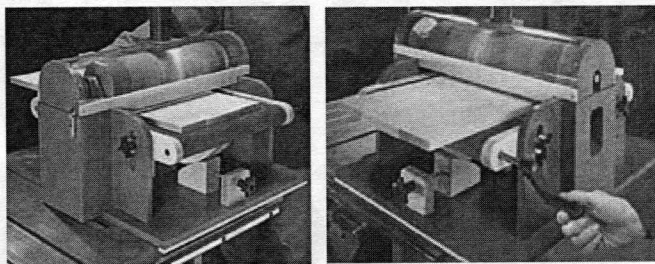
Sidney Katz bought a new Oneway Lathe which was cut down in height so he can get rid of that box he has been standing on!

Jeff reported that our exhibit at Norwell Library will run for another month.

There was no interest in having a booth at King Richard's Faire in Plymouth.

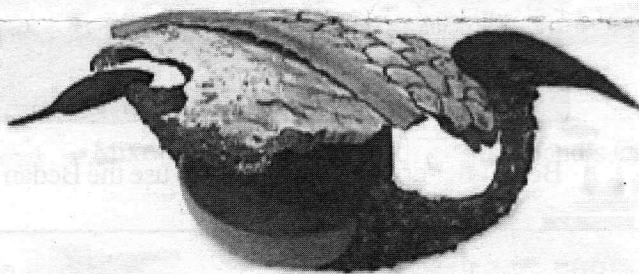
Bob Sutter reported that on September 10-12 an exhibit at The Museum of Fine Arts would be held, "Turned Wood and Wood Art". CNEW is planning a trip to the Museum.

Ron Robertson had drawings of the thickness sander he fabricated. The plans were from Shop Notes magazine Vol. 15 Issue 86 March/April 2006. Members interested in the project can contact Ron at ualpilot@verizon.net.



Details can also be found at Shop Notes web site:  
<http://www.shopnotes.com/plans/thickness-sander/>

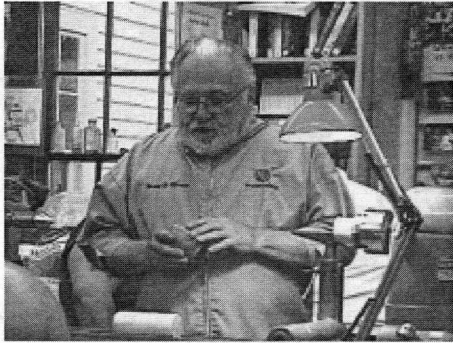
Plans can be downloaded for \$9.95 from PlansNow:  
<http://plansnow.com/dn3078.html>



The Broody Bird enhanced with Hank's carved feathers and Palm Leaf soaked and bent. Ken has been using coffee ground for texturing but is now considering dry cow dung. ( There is another word he used, but as this is a family publication we substituted the equivalent.) Members have been asked to supply small carved eggs the size of a thumb. Legs and feet are also needed.



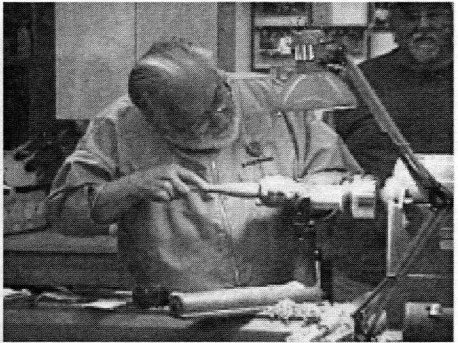
# Norm Mancuso Demonstrated End Grain Box Turning



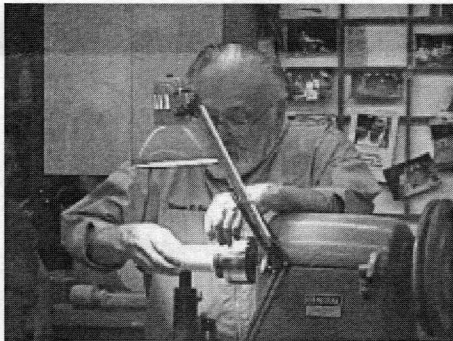
Norm gives an overview of steps in turning a *no strain end grain* box



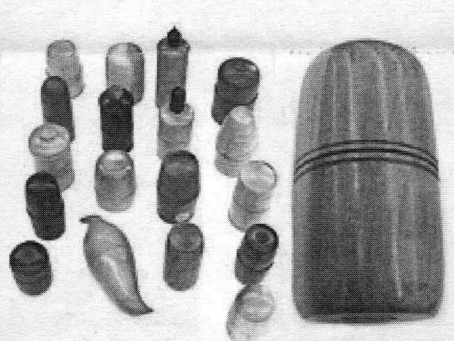
Getting started with the plunging of a drill into the mounted blank



Hollowing the box bottom using a spindle gouge and scrapper



Finishing with Myland's friction polish (French Polish)

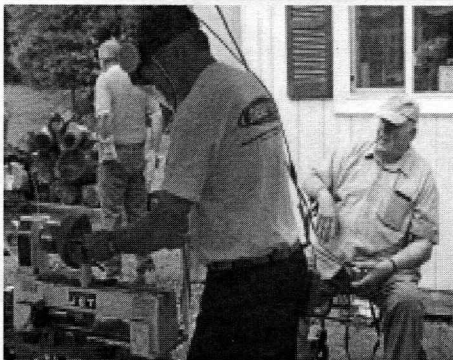
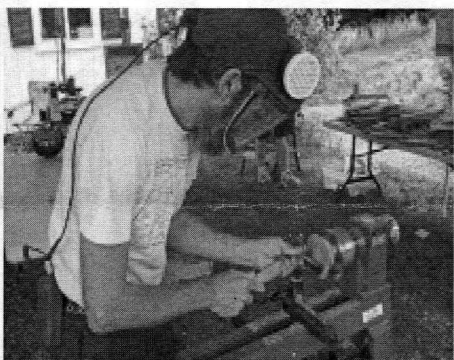


Norm's Show & Tell assortment of boxes and finished demonstration box



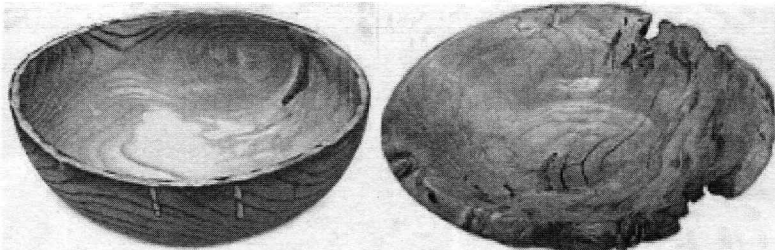
Just some of the large attentive audience

# A Great Turnout for Nigel and Gill's Saturday Hand's On Party



# Show & Tell

July 2007



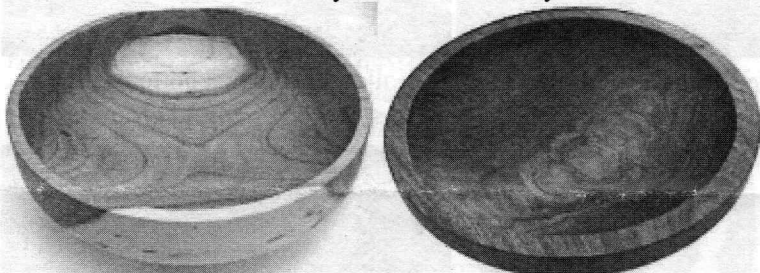
Ken's enhanced Mulberry bowl and Cherry bowl



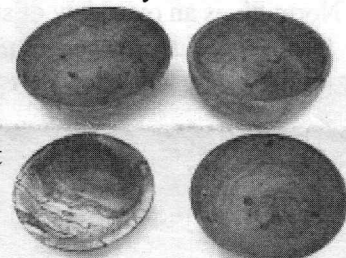
Dave Eaton's Maple vase with translucent paint



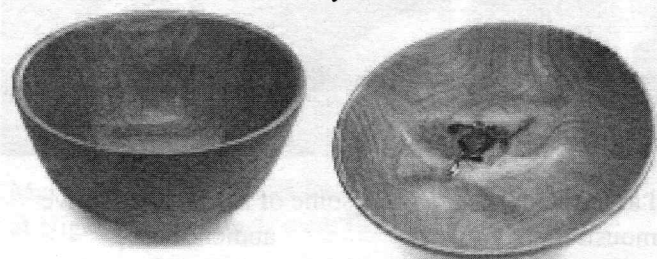
Sid's Oak Burl & Cocobola box - First item turned on his new Oneway Lathe



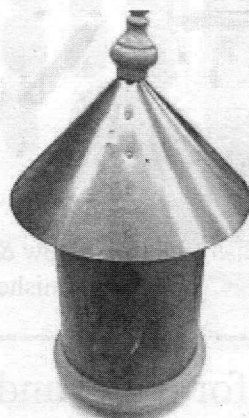
David Rice's Cherry and Walnut bowls



Nigel's small bowls



Paul O'Neill's Cherry bowls



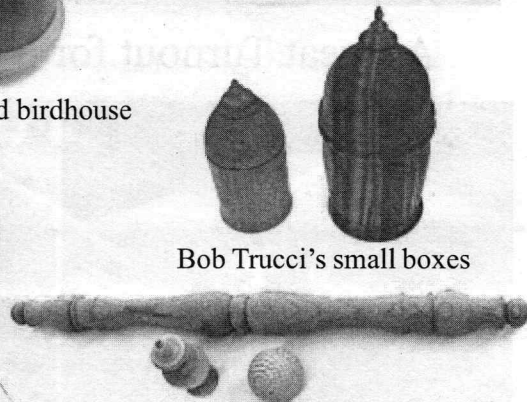
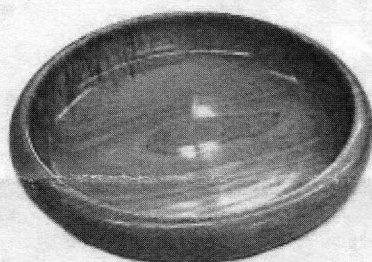
Ben's staved birdhouse



Jim's swamp Maple carving

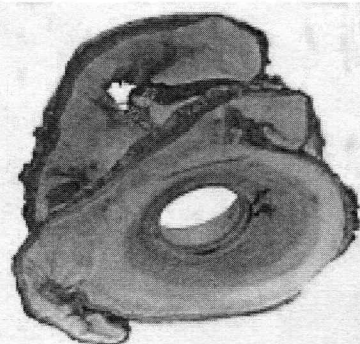


Ian's Peruvian Walnut box, segmented bottle and Maple bowl

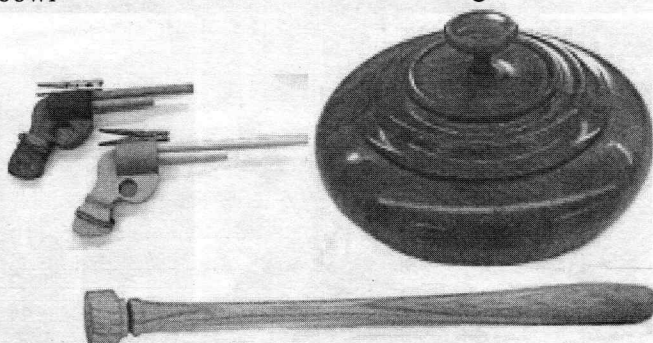
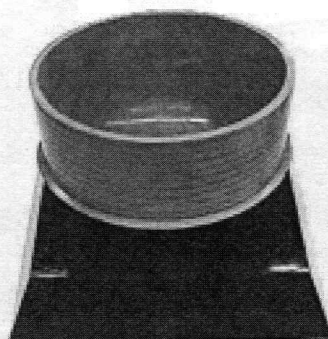


Bob Trucci's small boxes

Mike Veno's items turned at Nigel's Hand's On



Andy's piece he will dye in future and high contrast piece



Jeff's elastic band pistols, Osage Orange box, and Ash baseball bat in process