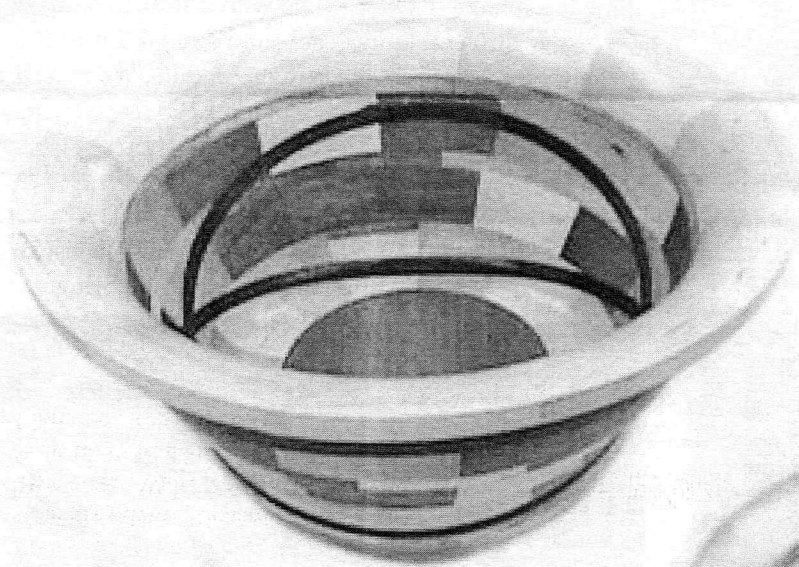
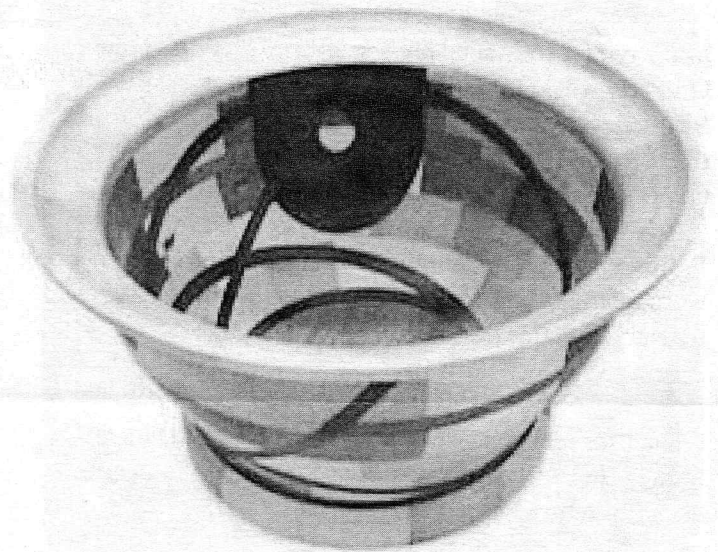

AS THE WOOD TURNS

August 2008 Issue 134

Segmented Turnings with Intersecting Slanted Rings



How did he do that?



Nigel Howe put his new band saw
to good use and produced these
intricate segmented pieces.

2008 MSSW Officers

President - Hank Cahill (781) 878-0234
Vice President - Richard Friberg (508) 378-2436
Treasurer - Wally Kemp (781) 871-1390
Secretary - Mal Partridge (781) 843-3883
Librarian - Ron Robertson (781) 545-8295
Newsletter - Mal Partridge (781) 843-3883
Web site: <http://www.mssw.sitelinker.org/>



Next Meeting

Tuesday, August 26th, 2008, 7:00 P.M.
At Hank Cahill's *Dust Bowl*
Refreshments by: David Rice
Member Challenge: Miniature turnings-
Why not try a miniature segmented turning?
Demonstration: TBD

Meeting Minutes

The meeting was called to order at 7:00 pm at Hank Cahill's Dust Bowl

President's Report and General Business

Guests present were Glen Shaffer from West Roxbury and Steve Wiseman from Norton.

David Rice has cleaned up our nametags and they should be worn by members as we have a number of new members who would like to recognize each of us.

Nigel was given photographs of his Hand's On party and was given a rousing hand by the members who appreciated what he and Gill did in holding what we hope can continue to be an annual event. Members reviewed the Hand's On as we turned and met with our member's wives, friends and guests. Nigel brought in dishes left behind for member pickup.

Request for refreshment volunteers was met with volunteers for September and October, leaving November open.

Mal's binder contained photographs of Nigel's Hand's On Party. Classic Design article by Jon Siegel, Star Segment Insert review article by Andy Osborne, list of display stand articles in woodworking magazines and Overview of our JCC Exhibit-Fall 2008.

Wally reported that 30 pieces of the Duxbury Oak Burl were distributed to members. He also reported that the treasury contains \$2407.

Ron the Librarian reported that our DVDs have been copied for member use and he is keeping masters at home. This will allow making a new DVD if a member does not return borrowed copy.

Bernie reported on the Nokoma baseball bat factory recently opened in Fall River. They have a Baseball and Softball Training Facility that is open 10am-8pm seven days a week. Bernie is checking availability of a tour we can take of the bat making equipment and the rest of the facilities.

Bob Allen reported on the Cohasset Art Festival and mentioned a customer who has an on-line gallery and will be coming to our August meeting.

Hands's On was scheduled for Saturday, August 16th.

A lengthy discussion was held as to the style of the display pedestals for our JCC exhibit. Bob Sutter thought that square columns were best. Mike Veno volunteered to head a work party for construction. The following message was sent to members by Mike:

All those who are looking to help building the Stands. The date for the construction party is Saturday Aug 23 starting at 9 AM and going till they're done. The location is at Hanks Shop.

I think it will take ~ 8 hours total with 2 shifts(about 3-4 hours each shift) of 4 guys each, and a break for lunch (BYO or hit a local sub shop) in the middle. We need to a few electric Palm Type sanders (and 120 or 150 grit paper for them)as well as some smooth knapp paint rollers and trays.

I will be getting the paint, foam brushes, saw blades(2), glue tape..etc. (Attn: Wally I'll save repts and bring them in after) I will also supply a few routers.

All who will be helping contact me by email (preferred) mykv@verizon.net or call 508-583-5004 and indicate which or both shifts.

Thanks
M Veno Sr

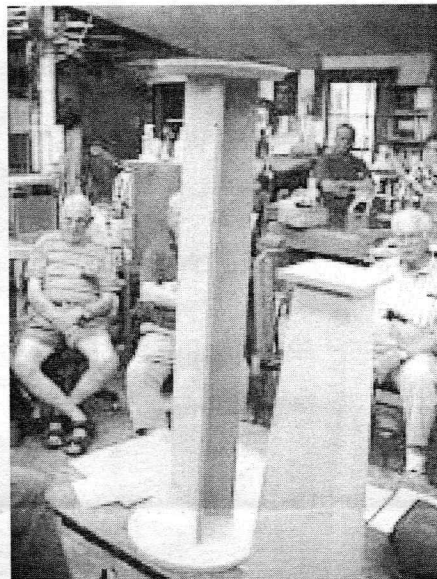
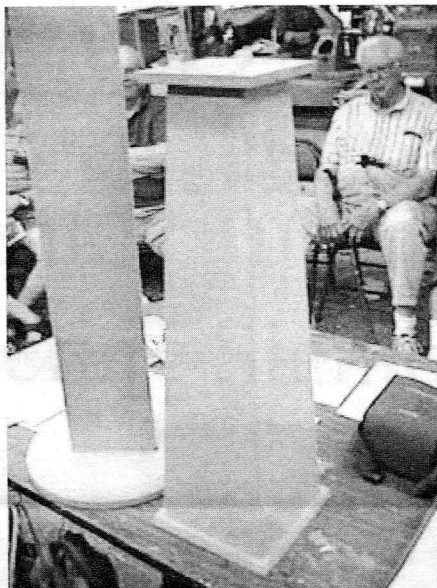
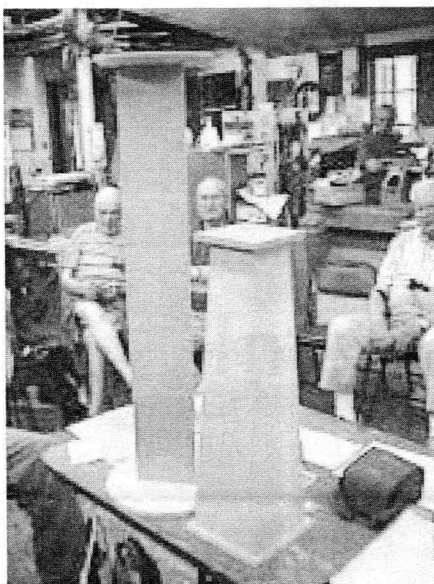
An E-Mail message from Andy Osborne was sent to members with details for those who will exhibit at the JCC.

Ian Manley volunteered to make a display showing the woodturning process for the exhibit. One of our Mini Lathes will be on display as well.

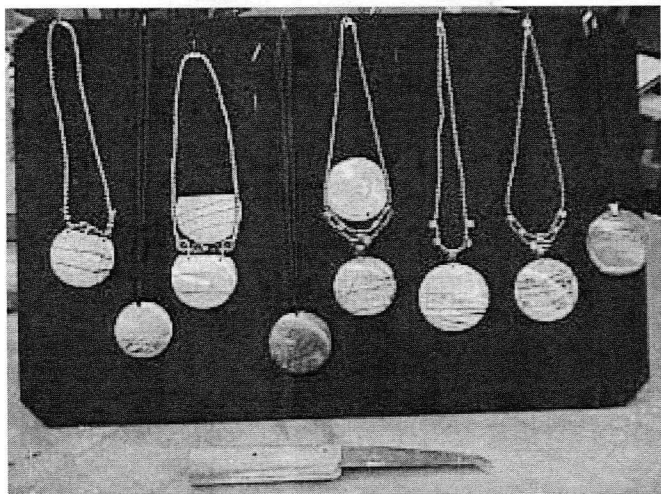
A wood swap was held which included a pocket knife donated by Bob Sutter.

Welcome New Member
Charles (Chick) Gillis
from Whitman

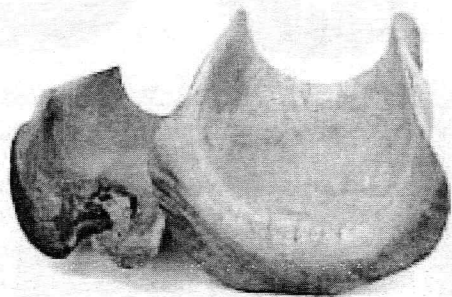
Mike Veno made sample display pedestals for review



More Show & Tell



John Destrampe displayed the turned jewelry he makes and sells. The parting tool is made from a SawsAll blade.



Jim Denker showed what his new DENKER 35MM Rotary Planing and Carving Head tool could do - remove 1 lb. of hardwood every minute.



Wally Kemp showed the Finial that was removed from the Hanover First Congregational Church. He will repair, but he will not install !!!

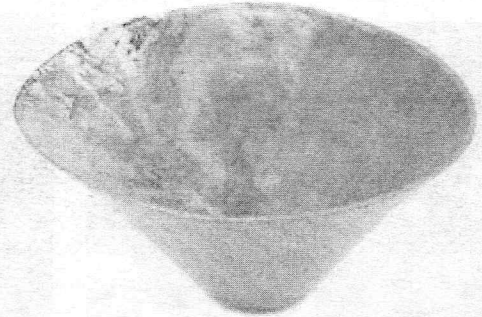
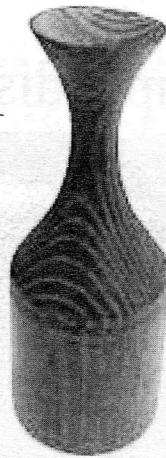
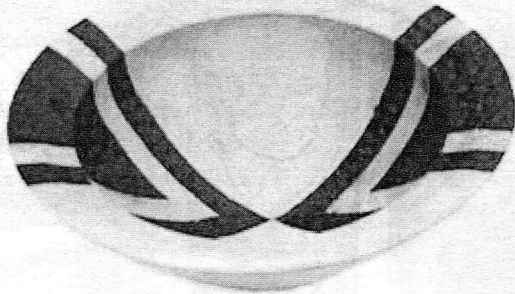
Restoring a centerpiece

Nearly 150 years after it was constructed, the steeple of Hanover's First Congregational Church faces serious reconstruction. (By Ryan Kost, Boston Globe)

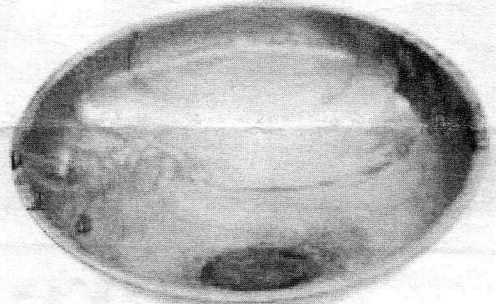
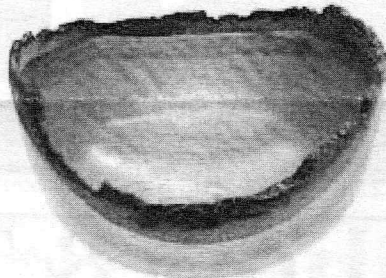
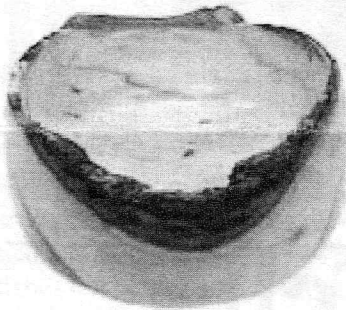


Show & Tell

July 2008

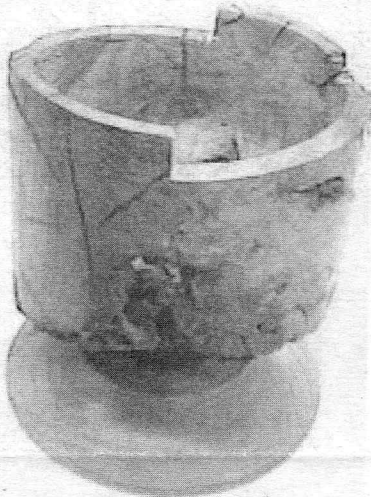
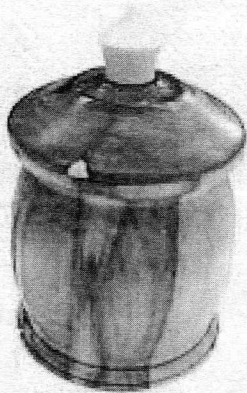


Andy Osborne decorated piece made at Nigel's Party, Ash box and Oak Burl bowl



Bill Dooley's natural edge bowls

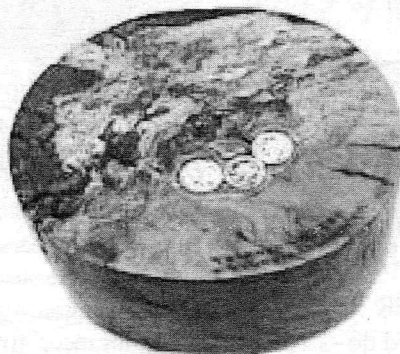
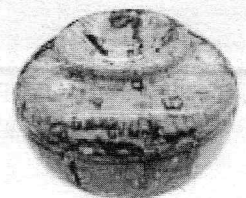
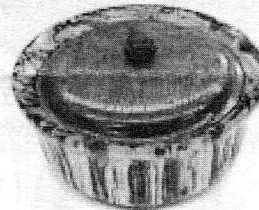
Paul O'Neill's Cherry Bowl



Mike Wells's Cedar box

Don Diedrich's Donut/Bagel

Bob Sutter's Cherry Burl and Cherry piece



Ben Natale's Hickory Vase, Spalted Ash & Bloodwood Box and Spalted Ash Box



Ken's Duxbury Oak Burl turned green. It warped & cracked - 3 quarters used to hold cracks together