

---

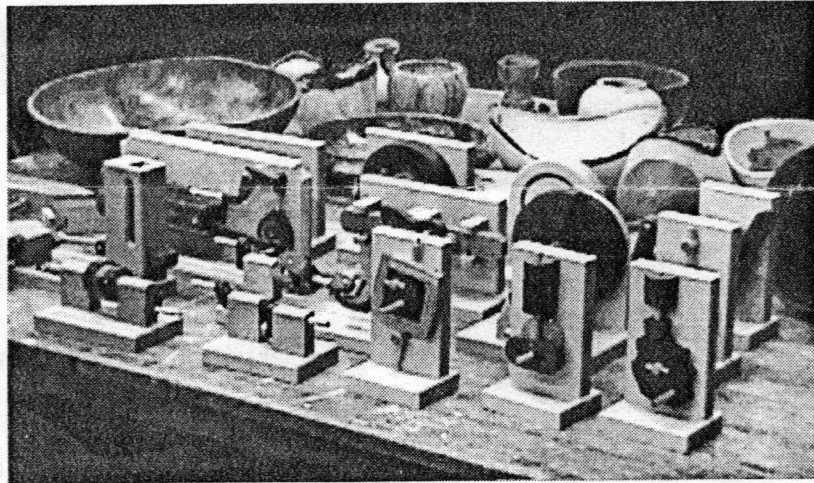
# AS THE WOOD TURNS

---

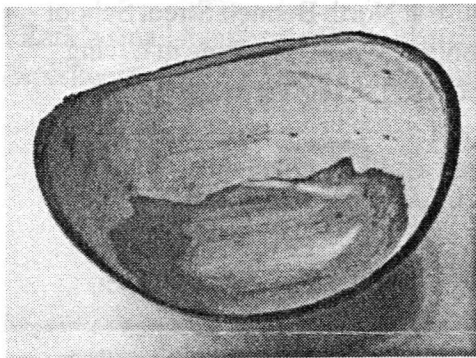
December 1998

---

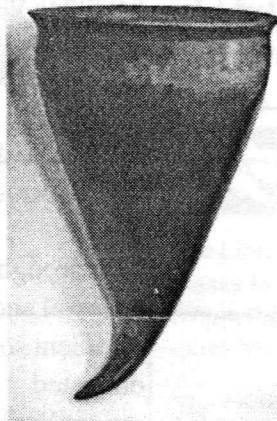
Members bring 35 pieces for November Show & Tell



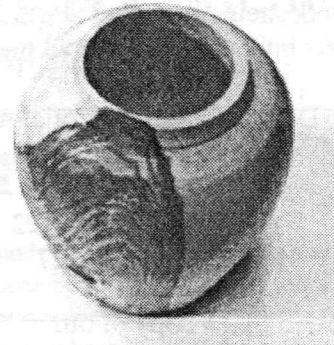
The large assortment of show & tell pieces included excellent turnings of all sizes and shapes and Mal Partridge's Mechanical Marvels from Raymond Levy's book which incorporate many turnings



One of John Murphy's applewood bowls finished with Deft spray lacquer



Zark Strasburger showed a turned & carved maple cornucopia tinted with aniline dye



Dick Friberg's ash burl piece was one of 6 pieces he displayed

## 1998 MSSW Officers

**President** - Hank Cahill (781) 878-0234  
**Vice President** - Gary Levine (781) 843-3695  
**Treasurer** - Wally Kemp (781) 871-1390  
**Secretary** - Charles Rosen (781) 848-6589  
**Librarian** - John Murphy (781) 834-1179  
**Newsletter** - Mal Partridge (781) 843-3883



## Next Meeting

Wednesday, December 16th, 1998  
7:00 P.M.

At Hank Cahill's *Dust Bowl*  
Refreshments by: **All members**

**Annual Christmas Party**  
Bring a **turned gift** in bag w/string

## Meeting Minutes

The November meeting was called to order at 7:15 pm at Hank Cahill's *Dust Bowl*

### President's Report

**Hank** introduced two new members, **Jesse Meyer**, a retired professional woodturner, and **Donald Nelson**.

A reminder was received from Sharon Art Center, Sharon, NH (Near Peterborough) requesting information about our group. Pieces for display are due by January 3rd, 1999. **Wally Kemp**, **John Murphy**, **Hank Cahill**, and **Steve Sarro** will send a total of approx. 8 pieces for the three month exhibit.

**WOODSHOP NEWS** magazine wants to expand their coverage of the art form of woodturning. They are inviting woodturning chapters from around the country to send them information on the chapters themselves as well as any members who may be working on a special, unusual or outstanding project. Examples include such things as gallery exhibitions, regional or national competitions and awards, a project or commission that involves people or places of notoriety, and educational opportunities for woodturners. Slides showing the respective work should be included with information sent. Members interested can submit material to:

Julie Doane Roberts, Editorial Assistant  
WOODSHOP NEWS  
35 Pratt Street  
Essax, CT 06426-1122  
Tel. 860-767-8227

**Hank** requested that a copy of our newsletter be sent.

We were reminded that the Cape Cod Woodturners has room for a few non-members to attend the Dec. 7 Johannes Michaelson demonstration for \$15.

Treasurer **Wally Kemp** reported \$1,033 in treasury less payment for newsletter and library expenses submitted by Mal Partridge and John Murphy.

Librarian **John Murphy** purchased two new videos and reported that 5 videos and two books are still out and overdue. Members should make every effort to return items borrowed or rented from library.

## Old and New Business

Hingham is planning to remove over 30 trees on Rt228. Members who know when and if wood is available should contact Hank or other members who might be interested.

The next meeting will be our annual **Christmas party** with the Woodcarvers on **Wednesday, December 16**, 7pm at Hank's shop. Bring a small turned gift in a bag with a long string attached. Each member should also bring a refreshment for sharing. Bring your spouse or a friend to enjoy the festivities and meet the other woodturners you spend the 4th Tuesday evening of each month with.

The pick up of exhibit material at Audubon is set for Saturday, November 28th in the morning.

Mike Wheeler will be demonstrating at our January meeting on Tuesday the 26th.

**Wally** reviewed an article by Ernie Conover and questioned some facts on woodturning techniques presented. He and other members mentioned the excellent open house at North Bennett Street School in Boston they attended. We are fortunate in having such a fine source of craft schooling in this area.

Wally also described a grinder imbalance which was due to a loose grinding wheel bushing.

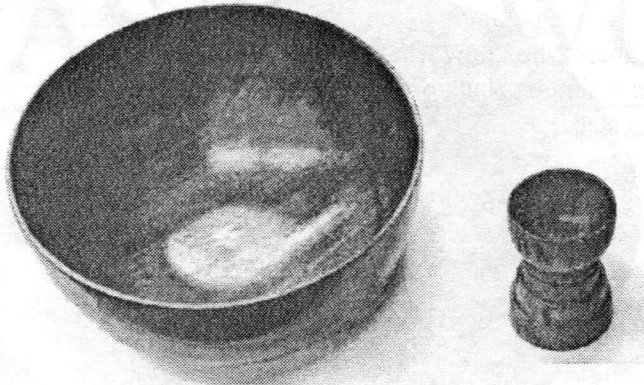
**Mal** brought in a Wagner Steamer for wallpaper removal and showed how it could be used as an excellent source of steam for bending wood as demonstrated at our last meeting by **John Murphy**. They are available at Home Depot, Sears and hdwr. stores.

**Mal** also reviewed a long factual article on CA Glue published in the December 1998 issue of *Radio Control Modeler* magazine. The article describes the manufacturing process and use of cyanoacrylate (CA) adhesives in detail.

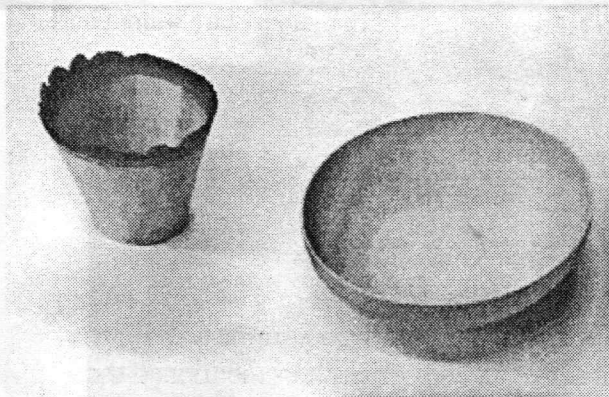
**Zark** sought advice on bed post round mortise and tenons for joining segments. **Jesse** and others suggested using a Forstner bit for the mortise.

1999 Membership Dues, \$20, are payable at January meeting or send check to Wally Kemp

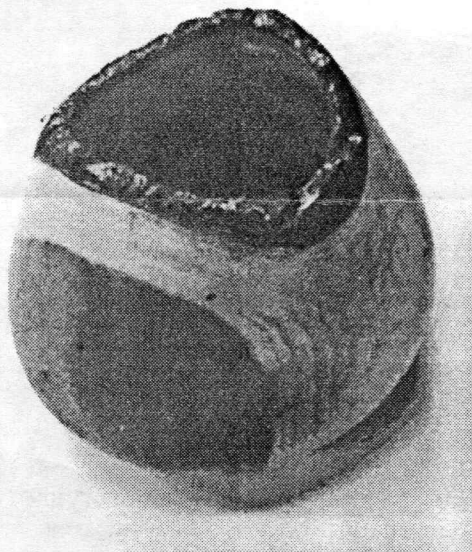
## More Show & Tell



Jeffrey Keller's cherry bowl and goblet (egg cup?)

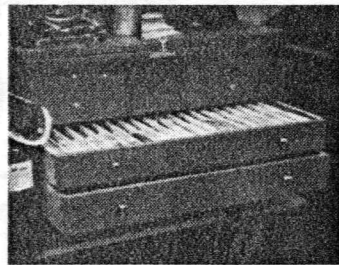


Zark's small maple pieces - he also discussed his experiments with microwave drying using trash bags

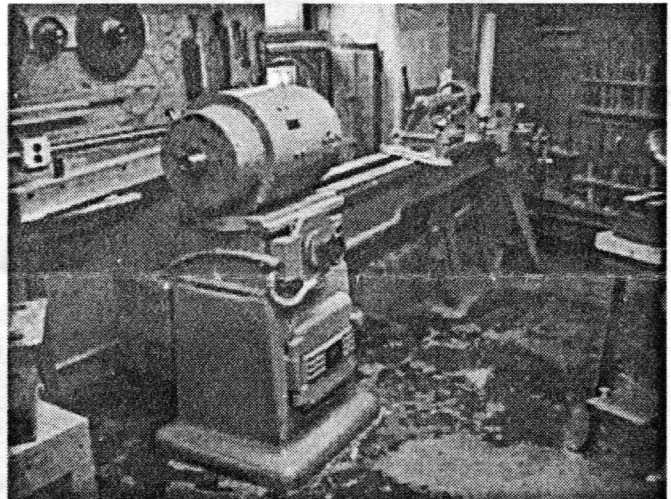


Wally Kemp's cherry Art Form piece

Note: members who do not attend meetings may not always get subtle humor included in newsletter



Well Organized  
Students Tool Chest  
at  
North Bennett Street  
School Open House



Oliver Lathe at North Bennett Street School  
Originally owned by General Electric

## Welcome New Member Donald Nelson



### Library



The Library has a good selection of periodicals and books thanks to the donations by members. A self service system will be used for distribution. The following procedures have been set up to keep track of the collection.

The Librarian has been authorized to spend \$25.00 per month for additions to the library. Members are requested to submit their suggestions for new books, magazines and videos.

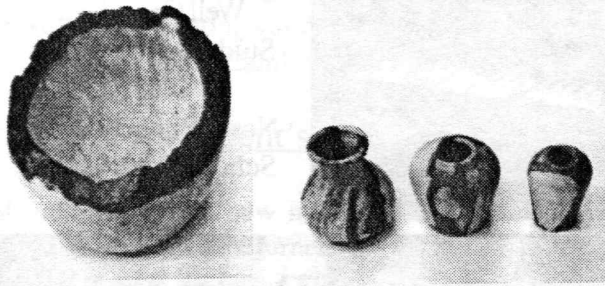
#### Check Out

1. Sign and date control card found in book pocket
2. Place card in index box
3. If checking out a video:  
Give \$2.00 rental fee to **John Murphy** or place money in index box

#### Return

1. Find control card in index box and cross off name
2. Replace card in book pocket

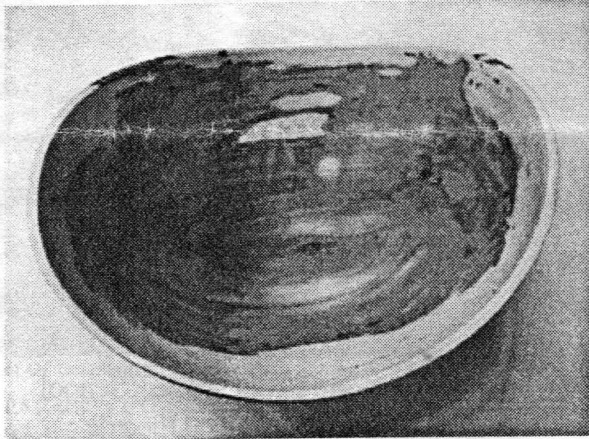
## And Still More Show & Tell



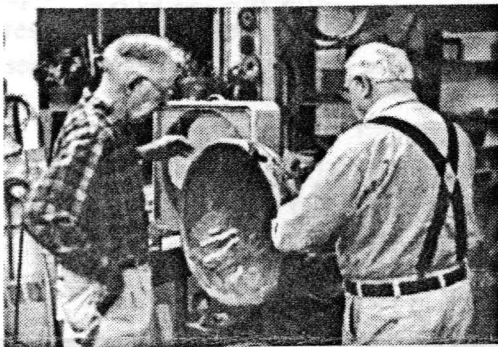
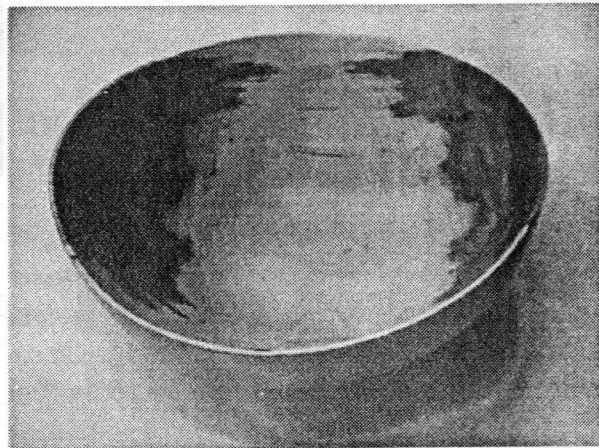
Ash burl, cherry vase and two spalted pieces by Dick Friberg



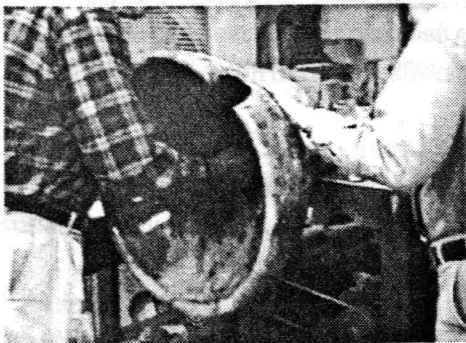
John Murphy's beautifully figured claro walnut burl



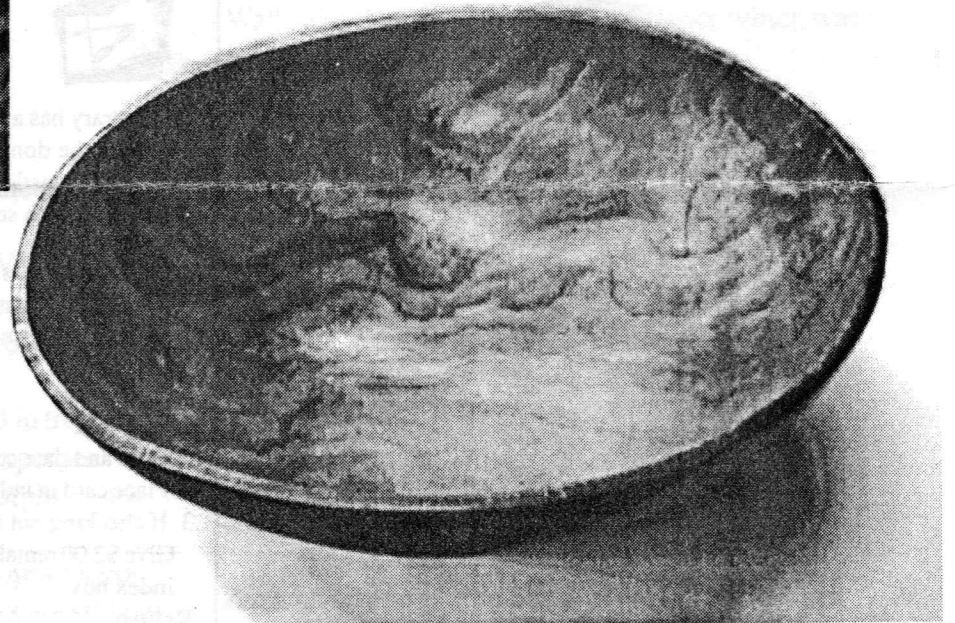
Two more interesting applewood bowls by John Murphy



Wally and John examine Hank's latest



Wally checks inside while John admires finish



Hank's large red oak burl bowl turned from cut out removed from even larger piece still on lathe