

---

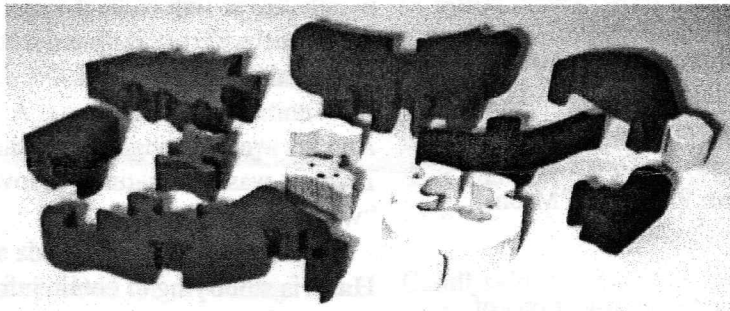
# AS THE WOOD TURNS

---

December 1999

---

Don't Go To Pieces Over The Holidays-



Get It Together At Our Christmas Party!  
Tuesday, December 21st

We will join with the Woodcarvers again for our annual Christmas party. Bring a small **turned or carved** gift wrapped in a bag tied with a long string for the grab bag. Other gifts unacceptable! If your spouse or friend wants to participate their gift must also be a turning or carving - 'nuff said.



Bring your spouse or friend to meet other members and to share the evening with us. Each member should bring a "pot luck" refreshment - appetizer, main dish or desert, plus an appetite. Put your name on any pot or dish you want returned. Also bring something for the "Show But Not Tell Gallery".

## 1999 MSSW Officers

**President** - Hank Cahill (781) 878-0234  
**Vice President** - Felix Troiano (781) 749-1713  
**Treasurer** - Wally Kemp (781) 871-1390  
**Secretary** - Charles Rosen (781) 848-6589  
**Librarian** - John Murphy (781) 834-1179  
**Newsletter** - Mal Partridge (781) 843-3883



## Next Meeting

Tuesday, December 21st, 1999  
7:00 P.M.

At Hank Cahill's *Dust Bowl*  
Refreshments by: Members  
**Christmas Party**

# Meeting Minutes

The November meeting was called to order at 7:10 at Hank Cahill's Dust Bowl

## President's Report

**Hank** introduced guest **Bernie Feinerman** from Fairhaven. He then reported on a news release he received about the **3rd New England Woodturning Symposium** sponsored by the Granite State Woodturners and The Guild Of New Hampshire Woodworkers. It will be a full day symposium. This year they have available the cafeteria, auditorium and woodshops of Pinkerton Academy in Derry, New Hampshire. The event runs from 9AM to 5PM on **Saturday, May 6, 2000.**

The program offers seminars and demonstrations of interest for all turners from novice to expert. The opening program is a keynote address by noted teacher, turner, and tool designer **David Ellsworth**. Other featured demonstrators will include: **David Lancaster, Al Stirt, Beth Ireland, Jacques Vesery and Bob Rosand**. The schedule contains 18 demos of 2 hours and 8 mini demos of 1/2 hour. Topics include: Finishing, hollowform vessels, vacuum chucks, miniturnings, control and safety, spindle turning for furniture, multi-axis turnings and many others.

Also featured:

- An instant gallery where turners may bring and show their work
- Trade show booths by woodworking schools, equipment and wood suppliers.
- Flea market tables for participants to buy and sell their used tools and supplies

Attendance is limited to the first 300 registrants. Places will be on a "first come, first served" basis so an early sign-up is strongly recommended.

## **Registration is \$40 per person**

Greater details will be made available in the middle of January with a full list of the topics and demonstrators. Registrations will start to be accepted on February 1st when Clyde Daggett will have registration packets available to mail. To receive your registration materials contact:

Clyde Daggett, Registration Coordinator  
213 Rattlesnake Hill Road  
Auburn, NH 03032-1723  
(603) 669-1656  
cmdaggett@worldnet.att.net

Treasurer **Wally Kemp** was ill and unable to attend, but Hank reported \$840 in the treasury.

Librarian **John Murphy** reported two videos out over a month and he will contact culprits by phone. A new book for the library is on order "Woodturning Wizardry" by David Springett.

Another woodcutting day sponsored by **Richard Friberg** was held Saturday November 20th at the "wood dump".

**Hank** is still trying to obtain information on a video camera for demonstrations.

**Wally** and **Hank** haven't heard from Signature Gallery on pieces sold.

## Old and New Business

The **MSSW** woodturning video is still in edit but had a showing on local cable channel 63. Copies will be available in near future.

**Mal** showed a sample turning with grooves filled with colored Glitter Glu. Ten 4oz. bottles obtained at Costco for \$8.89. A low cost decorative material.

A call from *Woodshop News* was received by **Mal** requesting information and contacts to do an article on turned wood hats after seeing our newsletter which we send to them each month. Gave them **Emilio's** number.

Member **Richard Freitas** has moved to York, ME

A wood raffle was held at the end of the meeting.

---

## **2000 Dues Are Due Notice**

Yes, it's that time of year for collecting dues. Give or send your \$20 to **Wally Kemp** to continue as a member and receive our newsletter and other amenities.

**MSSW is Y2K compliant**

## Working wonders with wood

By Julie Ann Nevero

STAFF WRITER

Mal visited the *New England Air Museum*, Windsor Locks, CT. to view a Gnome rotary engine we will be fabricating for the challenge. He obtained copies of engine manuals and the engine display case was disassembled by museum personnel so photographs and measurements could be obtained of "the real thing". A visit to the museum, a two hour drive from Boston, is a worth while day trip for those interested in flight from balloons to jets. The museum was destroyed twenty years ago by a tornado, but has more then recovered with two hangers filled with exhibits as well as a large outdoor display of aircraft. A large library of aviation information is available on tuesdays and saturdays for research.

Preliminary drawings were shown by Mal and given to interested members. A sign up sheet for producing various components was made available. He went into some detail on various methods of fabrication. Members who produce parts that mate with other parts or assemblies should have available from the other member a sample piece of wood with the mating hole for proper fit.

Drawings for jigs and fixtures as necessary will also be supplied. This project requires *precision* turning to fixed dimensions - a satisfying challenge. Wood selection requires dried wood with the necessary characteristics for strength and appearance. A stock list will be made available.

We should be able to get the project underway after the Holidays. A meeting of participating members should be held prior to the January MSSW meeting to discuss details and coordinate fabrication.

Mal has been researching this project for over a year and now has a 2" binder filled with historical data and information from around the world.

---

### Norwell Library Exhibit

An exhibit displayed in a 3 ft.glass tube with three shelves contains turnings by **Hank Cahill, Wally Kemp, John Murphy, Roger Hill, Jack Nash and Richard Friberg**, runs December 7th thru January 7th.  
Crunch!

The colorful works of Abington resident Hank Cahill and other Massachusetts South Shore Woodturners are currently on display at the South Shore Audubon Society in Marshfield. Spectators can see the group's colorful array of bowls, vases, weed pots, platters, boxes and more at the exhibit, currently running until Dec. 4.

Cahill, one of the founders of the woodtumers, said there is a high demand for sophistication in woodworking nowadays and that the group is constantly looking to improve its work.

Cahill said the Audubon society has been "very generous" in their willingness to "expose people to our work." Ellyn Einhorn, education coordinator at the Audubon society, said that the generosity "works both ways, they do all the work. They organize their group to do this. So much comes from them."

Using a machine called a wood lathe, the group can take any log, hollow it out and create a work of art. It's not a simple process however.

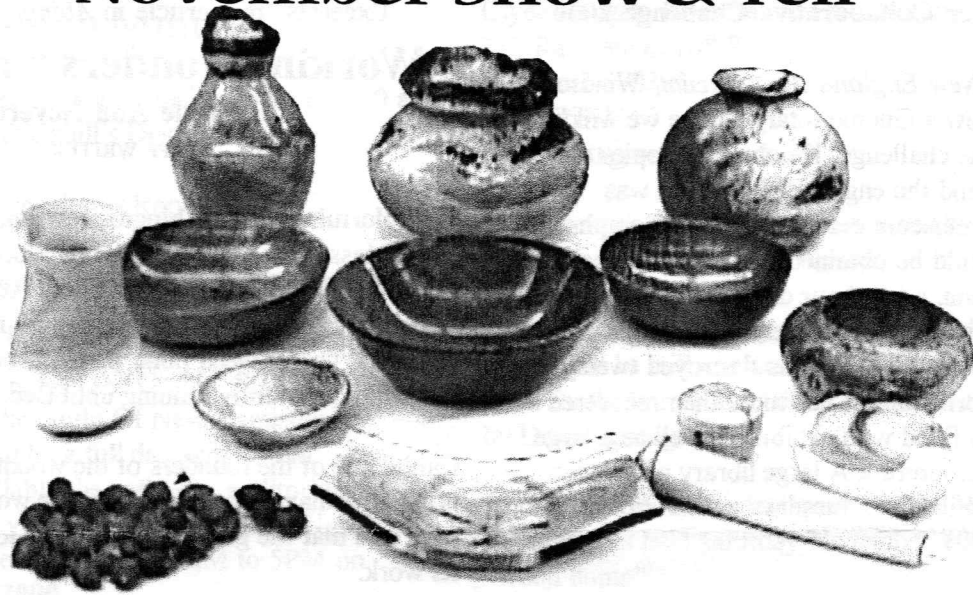
A lot goes into selecting a piece of wood, according to Cahill. "What you have to try to do is take a piece of wood, look at it in log form, and look for the beauty that mother nature produces. It's important to catch the wood in its various stages."

Einhorn said it is the group's knowledge of wood that makes the display so great. "Besides the interesting grain, there are also strange designs in the wood. They know how to look for these so each piece comes out different," she said. The group uses only recycled wood. "We're not out there cutting down trees," Cahill said.

The South Shore group was established four years ago. The Audubon society had invited area woodtumers to display their work. The six turners in attendance, of which Cahill was one, talked about forming a group and went from there.

"This is just an example of what we like to do here which is exhibit the work of local artists," Einhorn said. "It's a different way of looking at a tree."

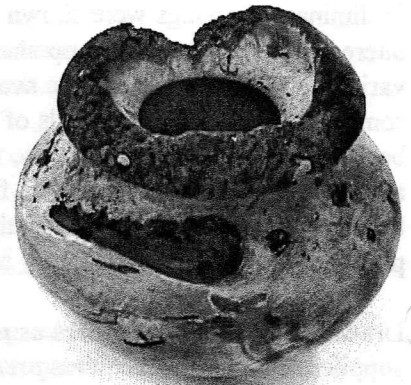
# November Show & Tell



Roger Hill's piece from Richard Friberg's maple tree - he uses water based urethane spun inside to remove moisture thru pores - messy but effective



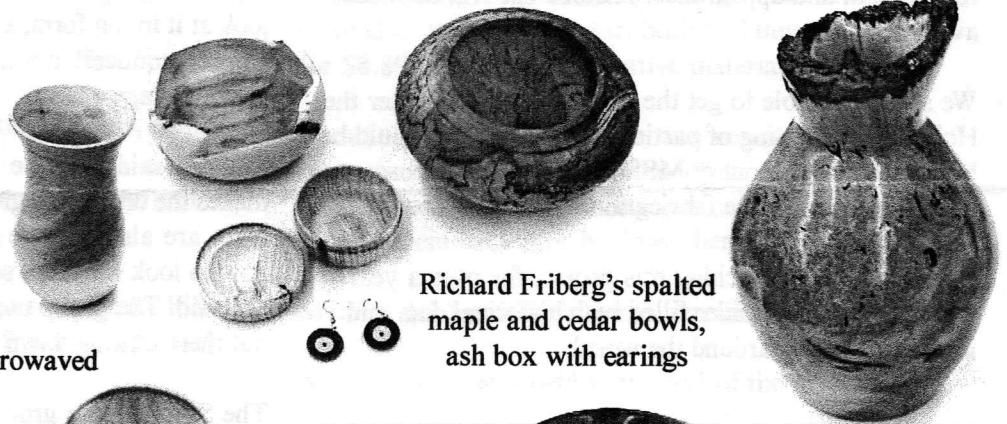
Felix Troiano tried beads for effect then sanded off their tops - whoops!



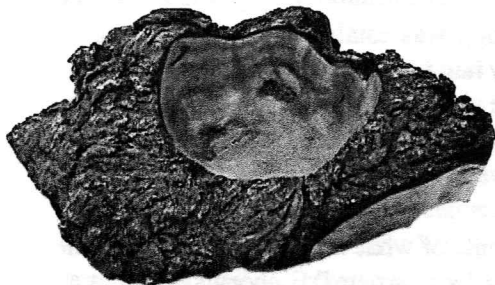
Felix used colored stain to bring out the color of maple burls in two nice pieces



Crotch from 17 year old tree limb - microwaved



Richard Friberg's spalted maple and cedar bowls, ash box with earings



Hank Cahill's pieces include an interesting bark bowl with three feet and others from paulownia "Empress Tree" wood



Jesse Meyer turned these three walnut bowls - they were rough turned last Februsry