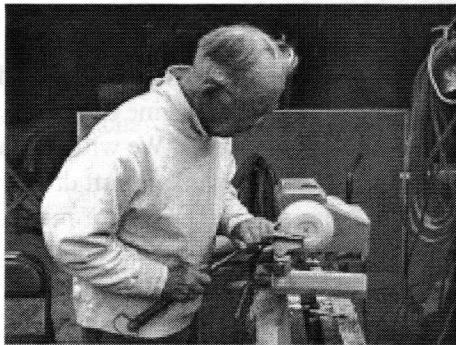


# AS THE WOOD TURNS

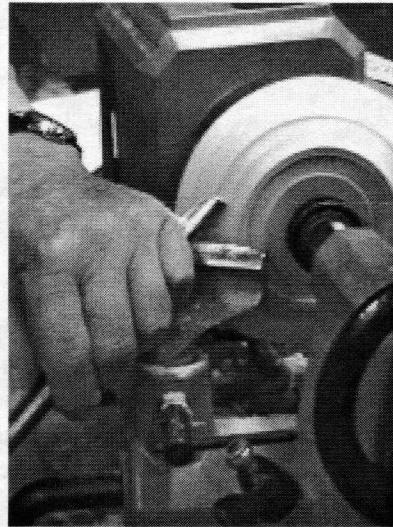
December 2000

## Turn Out For The Christmas Party

Members Competed To Turn Thin Plates At Last Months Meeting



Wally at work

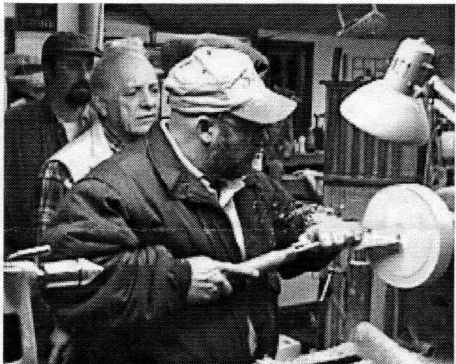


Hank closeup

The Old Timers Allowed The Younger Turners To Win!



John Shooshan concentrates



Steve Sarro starts the plate



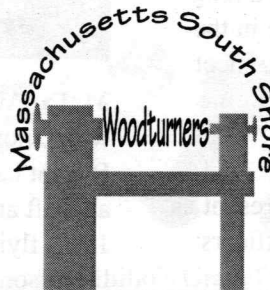
Hank and Wally



John Shooshan up close

### 2000 MSSW Officers

**President** - Hank Cahill (781) 878-0234  
**Vice President** - Felix Troiano (781) 749-1713  
**Treasurer** - Wally Kemp (781) 871-1390  
**Secretary** - Mal Partridge (781) 843-3883  
**Librarian** - John Murphy (781) 834-1179  
**Newsletter** - Mal Partridge (781) 843-3883



### Next Meeting

Tuesday, December 19th, 2000  
7:00 P.M. At Hank Cahill's *Dust Bowl*  
Refreshments by: Members  
**Christmas Party**  
Tuesday, December 19th

## Meeting Minutes

The November Meeting was called to order at 7:21 at Hank Cahill's Dust Bowl

### President's Report & General Business

**Hank** received letters from AAW informing us of the availability of 3 new videos - one of Instant Gallery, two of Techniques from the 2000 Symposium. New rules for the 2001 Chapter Collaborative Challenge were also received. A letter from Norm Hinman requested how many of our members belonged to AAW. (100%)

Copies of the CNEW newsletter were distributed. The Brookfield Craft Center announced two woodturning sessions. The Woodchucks of Plymouth MA meet the 1st Monday of each month. Members invited to attend.

Treasurer **Wally Kemp** reported \$633.00 plus \$50 received from the Lexington Woodworker's Guild for **Mal's** presentation of our Gnome Rotary Engine at their October meeting. Mal submitted Newsletter expenses for the Sep, Oct, and Nov issues of \$82.05.

Librarian **John Murphy** reported all books back, but one video is still missing - Ray Key's Turning Boxes.

**Hank** (and **Wally**) requested that the following notice be inserted in the newsletter - least we forget!

### Notice

#### 2001 Dues Are Due

Please give or send your \$20 dues to Wally Kemp to continue as a member and receive our newsletter and other benefits of membership.

The Christmas party will be held at 7 pm on Tuesday, December 19th **one week earlier** than our regular meeting date. Bring a pot luck refreshment, and a hand made gift, turned preferred, in a small bag with a long string for each person who wants to participate in the Xmas Grab Box. Bring your spouse or friend to meet other members and share the evening with us. Come and enjoy the party - no formal meeting!

Officers for 2001 will remain the same as at present as no volunteers came forward and the present officers are doing such a great job, why change?

The **Jacques Vesery** demonstration is scheduled for Saturday, January 13th at 10am at Hank Cahill's Dust Bowl. An entrance fee of \$25.00 is required to cover costs. Bring a brown bag lunch. Drinks and donuts will be available for sale. Please notify friends and any others you feel would enjoy seeing this gifted turner. See his article in American Woodturner, Winter 2000, page 27 and back cover pictures. We need to advertise at Beaver, Woodcraft Supply, H&K in Charlton and Woodshop News. Members should make every effort to see that we have a large attendance in this event.

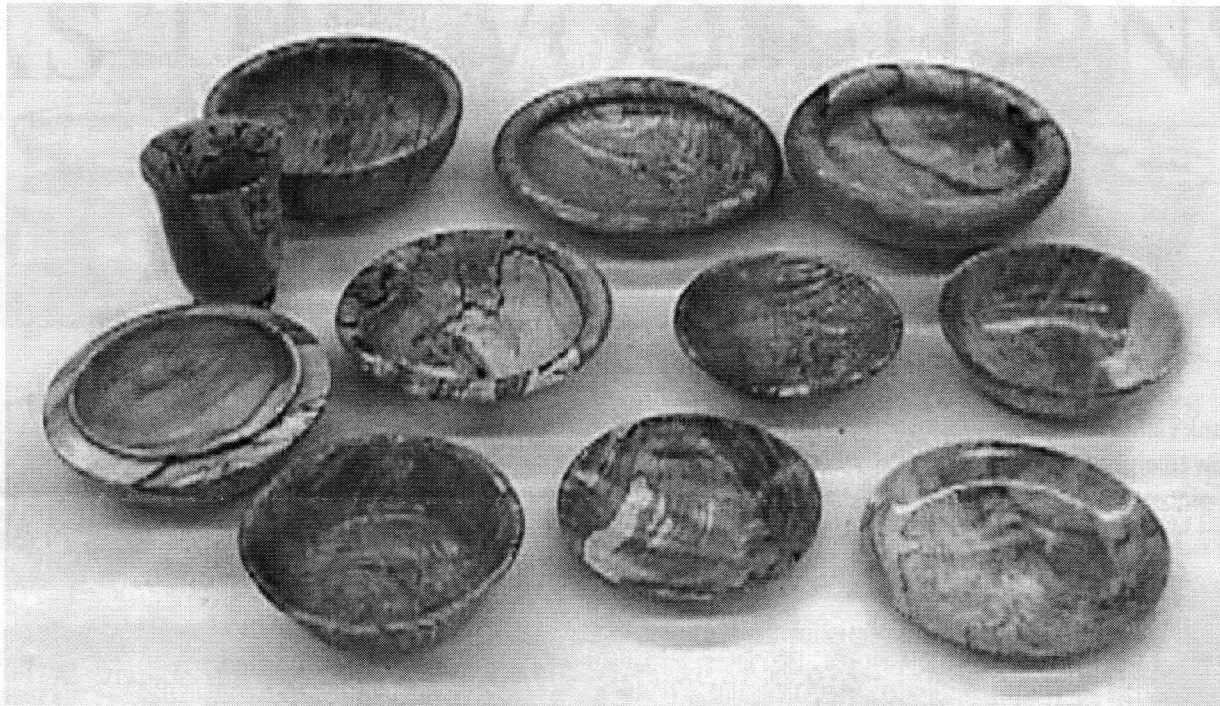
**Wally Kemp's** Oneway lathe arrived and he wishes he had purchased it long ago!

**Bob Iuliano** was at the meeting and talked about his adventures in Finland.

**Mal** showed drawings of a suggested project for the AAW 2001 Chapter Challenge. At a recent Gnome Rotary Engine lecture he received an invitation from Roland Gaucher to have our members visit his shop and see his 1/4 scale Bentley BR2 Rotary engine run and review speed controls used on his lathes. We will plan a trip in the spring. **Mal** also brought in an aircraft drone propeller he received. He also showed a book of plans for a Wooden "Steam" Engine, available for \$8 ppd. *The Old Saw* newsletter of the Guild of NH Woodworkers had a two page **color** insert of our Gnome Rotary Engine.



**Mal** at Aviation History Info Center, Quincy, MA demo with Gnome and Harriet Quimby display. Quimby's Bleriot had a Gnome engine. She was ejected from her aircraft and fell to her death into Dorchester Bay in 1912, flying from the Squantum airfield, later known as Dennison's. Amelia Earhart was an owner.

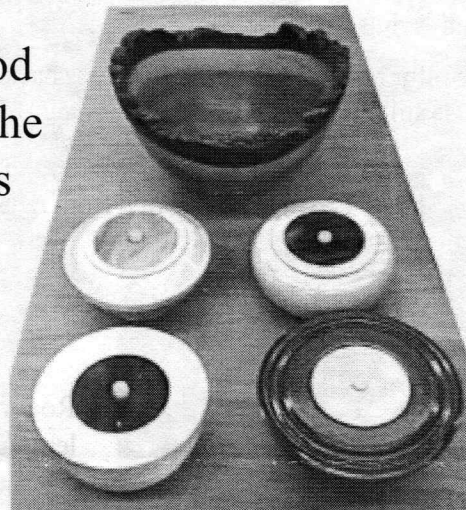


Richard Friberg only showed 11 pieces turned from curly ash and spalted maple - are the elves on strike?

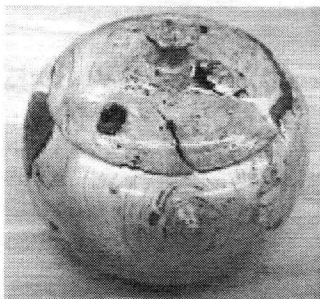


Spalted maple turnings and resawed burls (look like CAT scans) by Paul Marks

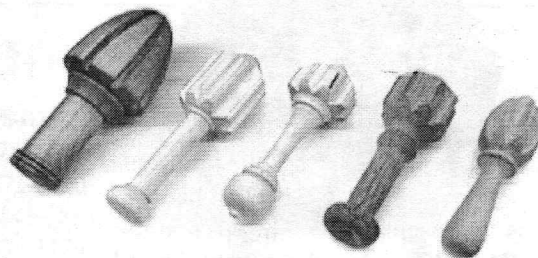
### Do a Good Turn for the Holidays



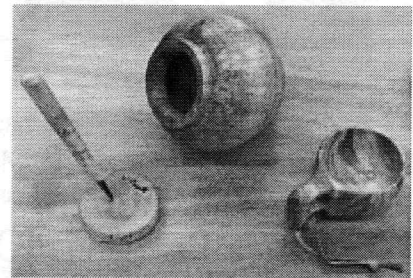
Emilio's lamp holders for Christmas presents and natural edge walnut bowl



Steve Sarro's cherry burl covered container



Lemon Juicers - note Emilio's Grapefruit juicer!

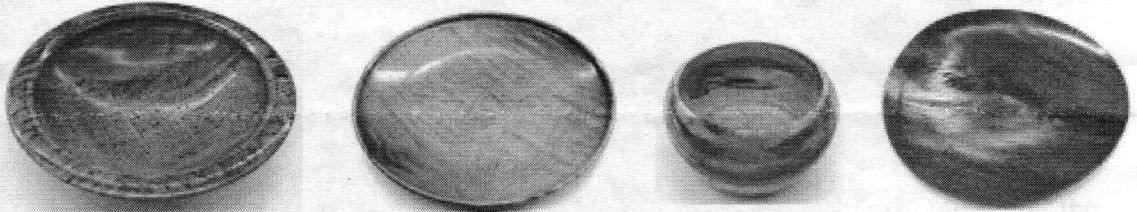


Birch burl cup "Kuksa", carving knife from Lapland and Bob's turning from birch log purchased at diner in Finland



So much to Show & Tell we needed a recount!

Hank Cahill showed eight pieces



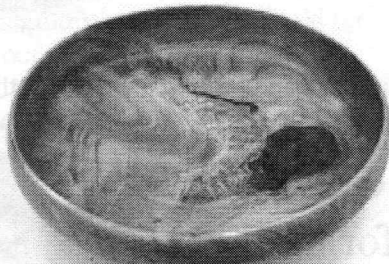
Last month's ring tool piece finished

Al Stirts turning finished by Hank

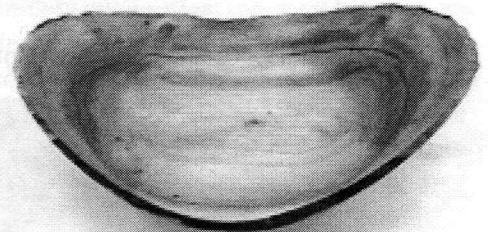
Jesse's maple

Wood pile birch bowl finished

1994 walnut feather plate



Walnut container



Box elder with 5 coats of lacquer

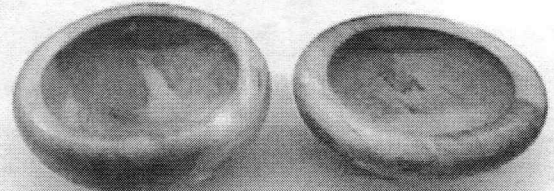


Roger Hill's maple burl vase

Lovely cherry bowl from neighbor's tree



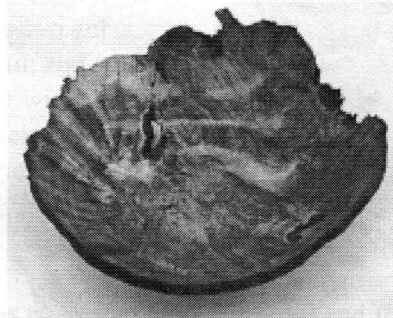
Roger cut grooves on lemon juicers on table saw before turning



Roger's Holly bowls - many shades of color



Felix Troiano's Wallywood vases with water based urethane finish polished using Turtle Wax automotive polish



Wally Kemp's red maple burl bowl with Watco & wax polish finish



Jesse Meyer's first try at deep boring spalted maple with polyurethane finish