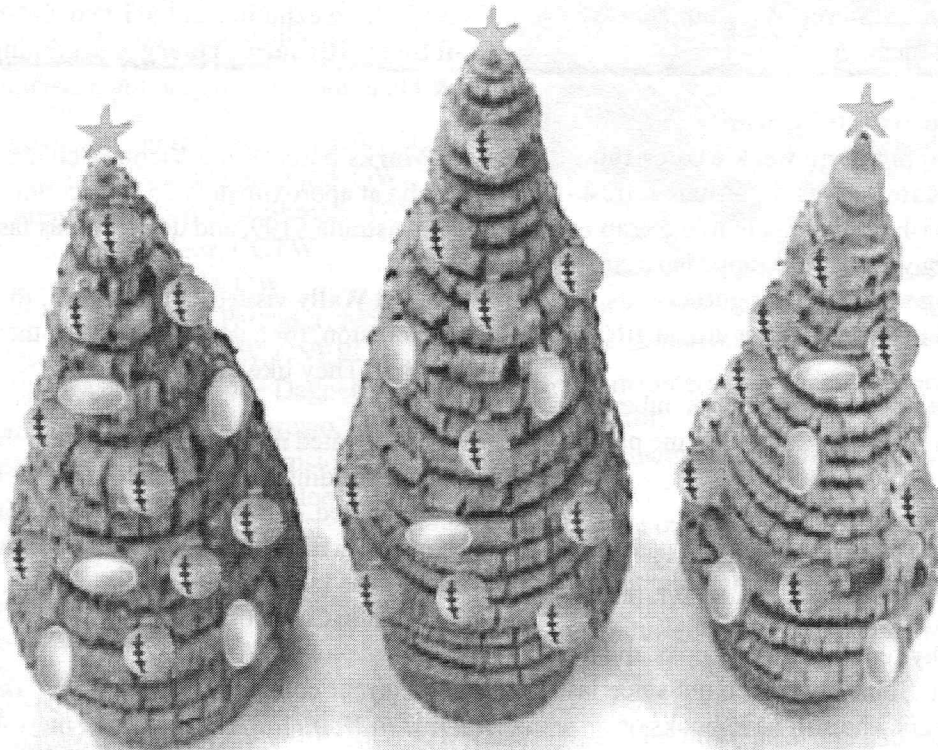

AS THE WOOD TURNS

December 2001

We're Going To Have A Party!



Wood You Please Come?

2001 MSSW Officers

President - Hank Cahill (781) 878-0234
Vice President - Felix Troiano (781) 749-1713
Treasurer - Wally Kemp (781) 871-1390
Secretary - Mal Partridge (781) 843-3883
Librarian - John Murphy (781) 834-1179
Newsletter - Mal Partridge (781) 843-3883



Annual Christmas Party

Tuesday, **December 18th**, 2001
7:00 P.M.

At Hank Cahill's *Dust Bowl*
Refreshments by: Pot Luck by Members
Member Challenge: Come to the Party!
Demonstration: Christmas Spirit

Meeting Minutes

The meeting was called to order at 7:00 pm at Hank Cahill's Dust Bowl

President's Report and General Business

Hank received a packet from AAW with applications for new members. It was suggested that our new members join so that we might have a 100% participation. The *American Woodturner* magazine is well worth the dues.

A newsletter from the East Surrey Woodturners was received for review by members.

Our annual Christmas party is to be held on Tuesday, December 18th, at 7:00 pm, (**one week earlier than our normal meeting date**). Bring a pot-luck refreshment to share. If you wish to participate in the grab bag drawing, bring a turning you made, wrapped in a small bag and tied with a long string. If your guest wants to participate in the drawing, bring another turned gift.

Bring your spouse or friend to meet other members and share the meeting with us. Come and enjoy the party - no formal meeting!

Treasurer **Wally Kemp** reported \$658 in treasury. He reminded us that dues for 2002 are being accepted.

Librarian **John Murphy** reported that 5 books and 5 videos are checked out. Some have been out since last June. Would the members who still have books or videos checked out return them so other members, especially new members, can enjoy and learn from them.

John reported that Jim Duxbury, from Ohio, who visited him last summer, would like to demo his "Resporator" invention. **John** will make arrangements for a future meeting.

Paul Marks inquired about Livos finishes and their current availability. They are located in Mashpee.
Editors note: TheirWeb site:

<http://www.livos.com/home.htm>

Our exhibit at Audubon features lots of red "sold" dots. Pickup date is Saturday, December 22nd.

Notice

2002 Dues Are Due

Please give or send \$20 dues to Wally Kemp to continue as a member and receive our newsletter and other benefits of membership.

Note: New members who have joined in the last few months are members thru 2002.

Some members attended the CNEW demonstration by Phil Brennon from Arizona. He uses "gunpowder" to pit bowls. (Don't ask)

Felix Troiano exhibited at the Hanover Middle School Craft Show. **Richard Friberg** is exhibiting December 7th & 8th at the Hull Life Saving Museum.

Paul Marks purchased a Vicmark chuck direct from Australia at approximately 25% discount. USA price - \$269, Australia \$199, and delivery was fast.

Hank and **Wally** visited James Taralli, former member from Holliston, for a demonstration of the OneWay boring bar. They liked what they saw.

Mal had updated membership lists available. Copies of Classical Molding Elements details and definitions were also distributed. A booklet was shown detailing how each member fabricated their portion of the Glendale Woodturners 1st place Steam Fire Engine for the AAW 2000 Chapter Collaborative.

Mal's current collection: *As the Brain Turns - Items of Interest to Woodturners*, contained the following articles;

- Member Tom Hollands Biography
- MSSW internet site printout
- Tailstock spindle tensioning device
- Folding tool rest
- Lathe chucks & chucking
- Baby rattle & cement nail tool
- Creative woodturning article
- A sharpening system for woodturning tools
- MillLathe for Dremel, etc. tool
- Moldings definition article

Mal suggested using Google **images** tab for searching the Web. "Woodturning" produced 3,260 **images** in .24 seconds! Give it a try.

Emilio again demonstrated tree forming on the lathe.

American Association of Woodturners 2002 Symposium - Providence, RI Committee Assignments



At a meeting on Saturday, October 27, at the Biltmore Hotel in Providence volunteers from local chapters selected tasks to help with the symposium.

Local Contact Persons:

Registration Committee - Hank Cahill, MSSW
AAW Product Sales - Betsy Goren, CCW
Machinery Committee - Bob Iuliano, OW, CNEW & Emilio Iannuccillo, OW, MSSW
Wood & Materials - Greg Drew, OW
Demo Prep Room - Jim Degan, NWL
Demonstrators Assistants Committee Basil DeWolf, OW
Instant Gallery Committee - Vicki Iannuccillo, OW
PR & Publicity Committee - Ken D'Ambrosio, OW
Clean Up Committee - Al Czellecz, CCTW
Youth Involvement - Larry Dunkle, OW
Chapters Exhibit Committee - Mal Partridge, MSSW
Auction Committee - Bob Iuliano, OW, CNEW
Door Prizes and Silent Auction - Clyde Daggett, GSW
Spouse Tours Committee - Ken D'Ambrosio, OW
Logo & Signs Committee - Ken D'Ambrosio, OW
Return to the Community Project - Jeff Mee, OW
Local Contact & Laison: Emilio Iannuccillo

MSSW = Massachusetts South Shore Woodturners
CCW = Cape Cod Woodturners, MA
OW = Ocean Woodturners, RI
CNEW = Central New England Woodturners, MA
NWL = Nutmeg Woodturners League, CT
CCTW = Central Connecticut Woodturners
GSW = Granite State Woodturners, NH

Each Local Contact Person will assemble those teams they require to fulfill their duties. They may use members from other chapters as well as those from their own chapter. As in the case of the Demonstrator Assistants Committee person, he/she will be receiving names from all across the United States.

The AAW board members that will work with the various committees will be chosen at the January 2002 meeting of the AAW board. When the names become available they will be forwarded to the local contact in charge of each committee mission. An updated manual will also be sent for the Providence 2002 Symposium.



The entire AAW board, plus the organizers, were at the meeting with Chapter members

MSSW members and guests present were; Hank Cahill, Richard Friberg, Mal & Gloria Partridge, Bernie Feinerman, and Emilio & Vicki Iannuccillo.

We had the opportunity to meet the entire team that makes the AAW such a solid organization representing our woodturning interests. Organizers Butch & Pat Titus conducted the meeting with professionalism and humor.

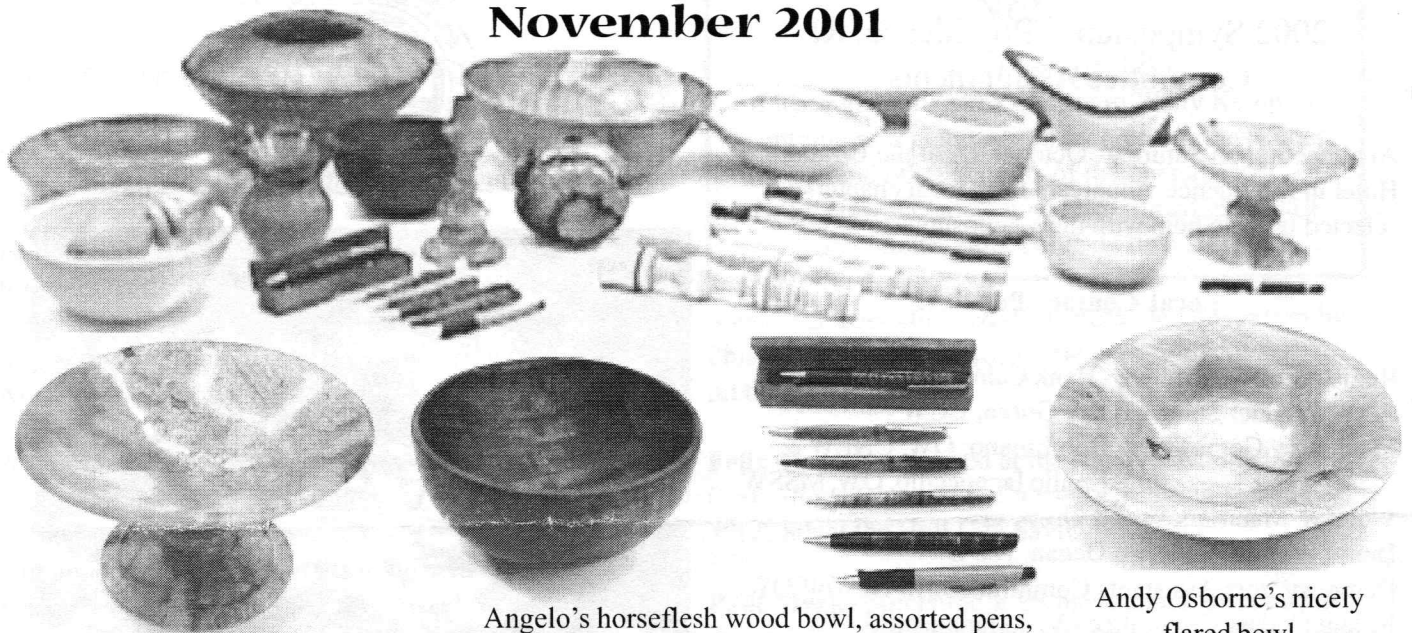
There will be 24-36 local and national demonstrators, each demonstrating four times. Ten percent of net income is given back to Local Chapters.



Waterfire Providence on the evening of the meeting

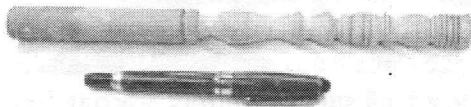
Show & Tell

November 2001

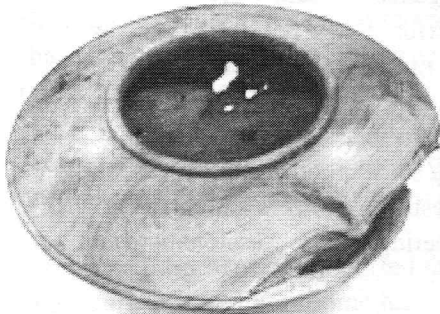
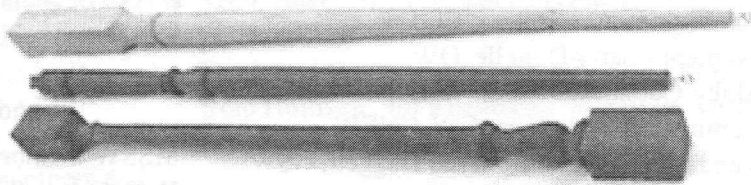


Angelo's horseflesh wood bowl, assorted pens, and sample balusters for customer approval

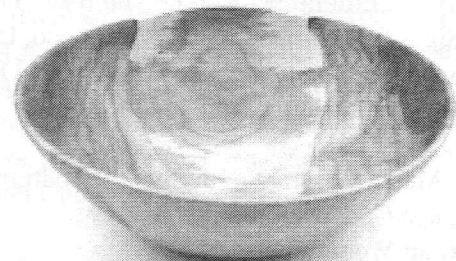
Andy Osborne's nicely flared bowl



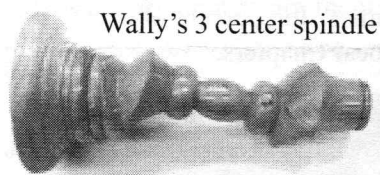
Jeff's spalted maple compote, plastic pen and challenge project



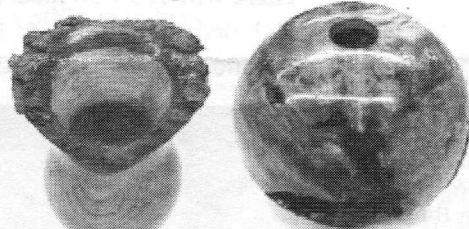
Wally's cherry hollow form, bowl, vase and maple burl hollow ball



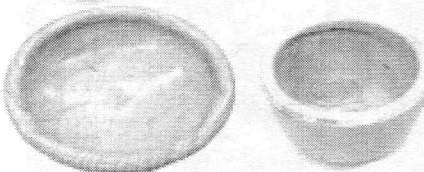
Hank's cherry bowl from Audubon log



Wally's 3 center spindle



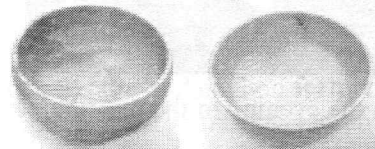
Hank's maple rattle using wrench tool



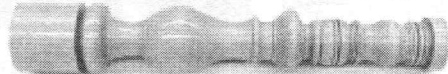
Rich Friberg's ripple ash bowl from cutout and three small ash bowls



Maple bowl (wood from bldg. foundation)



Rich's spurtles for stirring porridge



Mal's spindle sampler, see November issue



Hank's maple rafflewood bowl