

---

# AS THE WOOD TURNS

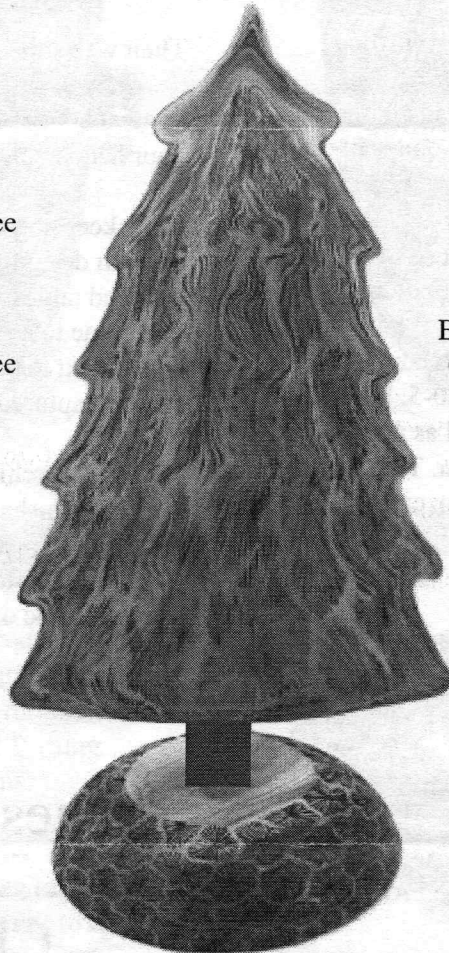
---

December 2004

---

## It's Christmas Party Time Turn Out and Enjoy

O Christmas tree, O Christmas tree  
O tree of green unchanging  
Your boughs too thin for turning  
So don't bring me in to meeting  
O Christmas tree, O Christmas tree  
O tree of green unchanging



O Christmas tree, O Christmas tree  
O tree of green unchanging  
Like little spears your needles bite  
But to a turner your a wondrous sight  
O Christmas tree, O Christmas tree  
O tree of green unchanging

Tree created by Liquifying and coloring green the decorated inverted bowl by Jean LeGwin.

### 2004 MSSW Officers

**President** - Hank Cahill (781) 878-0234

**Vice President** - Felix Troiano (781) 749-1713

**Treasurer** - Wally Kemp (781) 871-1390

**Secretary** - Mal Partridge (781) 843-3883

**Librarian** - Leonard Mandeville (508-586-7679)

**Newsletter** - Mal Partridge (781) 843-3883

**Web site:** <http://www.mssw.sitelinker.org/>



### Christmas Party

Wednesday, December 15th, 2004, 6:30 P.M.

At Hank Cahill's House

Refreshments by: Members: See page 2

Member Challenge: Have Fun

Demonstration: Bring a hand made gift  
in a paper bag with long string for grab bag

## Meeting Minutes

The meeting was called to order at 7:00 pm at Hank Cahill's Dust Bowl

### President's Report and General Business

The members authorized a donation of \$75 toward AAW insurance. The AAW is having a promotion to increase membership from September 1 to January 15. New and renewal names will be included in a drawing for a \$2250 Delta X5 lathe, Model 46-756. The members local Chapter also gets a lathe. Delta donated both lathes used during the Orlando AAW Symposium. Winners will be responsible for shipping from Orlando.

A \$15 check from Craft Supplies will be raffled.

John Murphy reported Jim Flannery sold all his pieces displayed on windowsill at Audubon. Sounds like a choice location.

Wally talked with the staff at Fuller Craft Museum about our participation in promoting woodturning. We will be demonstrating at their open house Saturday 12-5 on the 26th of February, 2005. A workshop for 6 students will be held on March 12th, 10-5. We will supply lathes, tools and other material as necessary. Our two instructors will receive \$25/hr. The workshop will be listed in the museums workshop catalog. Mal has supplied turning photos. Details will be worked out at our January meeting.

Mal brought in the two Supernova 2 chucks for member use on our lathes. Updated CD's included with chucks will be sent to us when available from Teknatool. Mal presented Wally with 3 months newsletter expenses and chucks purchase for a total of \$571.04.

Rory Miller, Sidney Katz and Lenny Langvin took individual lessons from Lyle Jamieson at Angelo's shop.

Hank had more Diamond stones available for \$22.

Members were reminded that dues for 2005 will be due the first of year. Some members paid early at meeting, and new members who recently joined are paid up for 2005.

A wood raffle was held. Harold Dyke will check on a black walnut tree when owner is back from Florida.

Check out this web site: <http://www.tahoeturner.com>

## Putting thoughts/designs on paper

Mike Veno gave an interesting talk on how he sketches his custom lamp designs on paper to evaluate what's suitable for the customers requirements. He sometimes uses a sketch book made from folded 8 1/2 x 11 sheets of paper.

Mike works for Blanche P. Field, LLC, a custom shade and lamp shop located in the Boston Design Center. They are the premiere source for exquisite custom lampshades and distinctive custom lighting fixtures for fine residences, hotels, and restaurants, since 1905.

Their web site: <http://www.blanchefield.com/>

A great source for that special hand made shade for your hand made turned lamp fixture.

Mike keeps on hand sketches of spindles, lampbases, random design shapes, table leg shapes (some customers need tables for their lamps), and many other designs that come to mind. He is not alone in keeping paper and pencil next to the bed so that middle of the night thought can be captured.

He was an architectural model builder and is familiar with classic shapes and designs. He turns wooden lamp bases and fabricates models as needed to demonstrate a new custom lamp design for the customer and has brought some of these for show and tell.

---

## Wally says:

## Dues are due for 2005

---

## Christmas Party

Wednesday, December 15th, 6:30 PM, Hank's House  
Bring your spouse or friend and a **Hand Made** grab bag gift in brown paper bag with a long string if you want to participate in the grab.

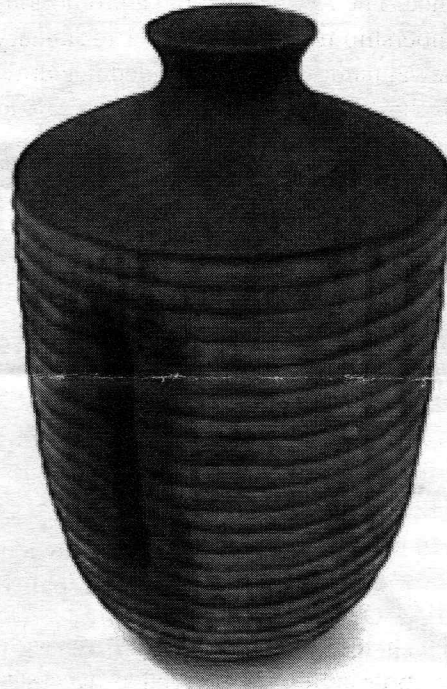
Hank's girls will be cooking a large turkey!  
Members to bring pot luck item to complement.  
Appetizers, salads, vegetables, deserts, etc.

**Come and enjoy the evening!**



# Jean LeGwin Knows No Limit

Jean demonstrated how she produced pieces from a block of wood supplied by Woodworker's Journal for their annual turner's challenge

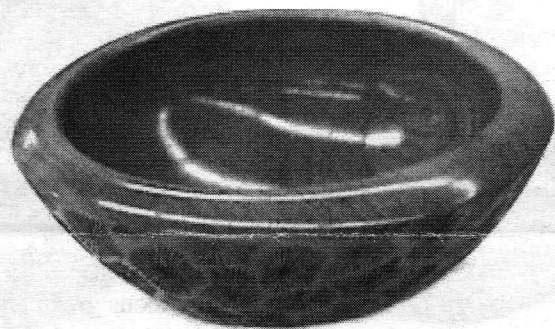


Jean worked with AAW personnel to produce two American Woodturner CD's. When Mary Lacer was asked by the Steve Blenk to select four turners to participate in the Woodworker's Journal Turning Challenge, Jean was one of the selections.

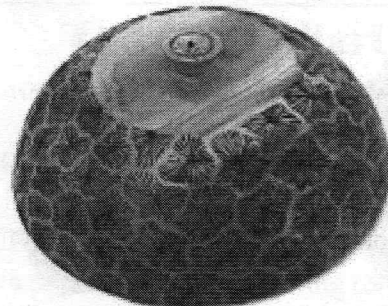
A block of 12"x 4"x 6" butternut was given to each turner with no rules just as long as challenge project was made on a lathe. They would also have to describe the how and why they arrived at the creations they produced.

Jean was interviewed for the story, but only a small portion was included in the magazine article. Jean filled us in on the missing details. She challenged herself to do things not done before. The butternut was it's own challenge - tearout. The results speak for themselves!

Congratulations, Jean, you have *turned* out to be a great creative artist and woodturner.

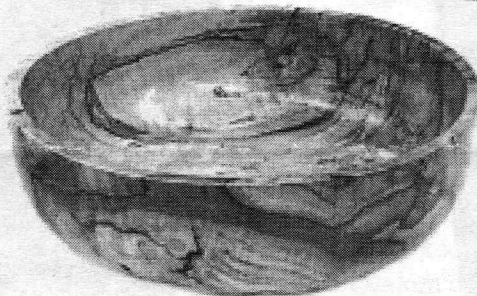
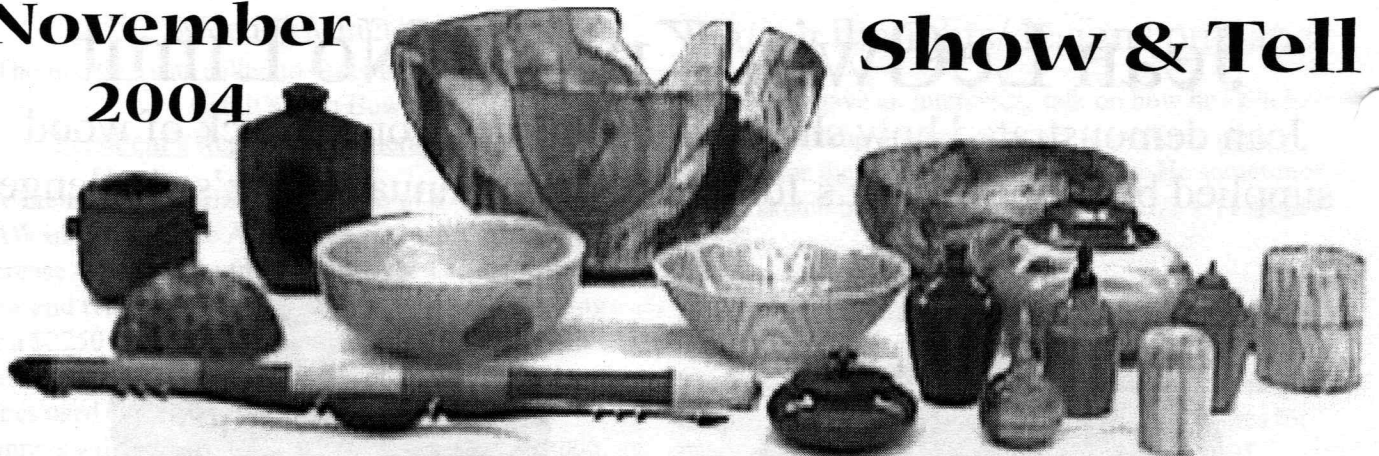


Not part of challenge but a bowl that Jean enhanced with decorative detailing.

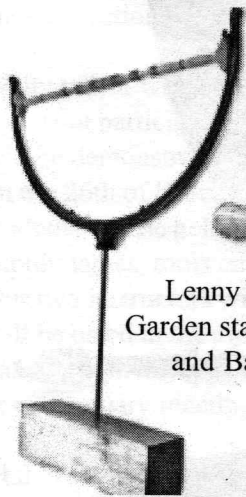


November  
2004

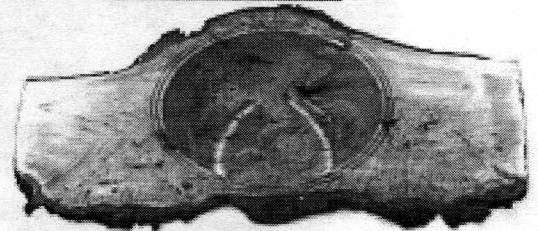
# Show & Tell



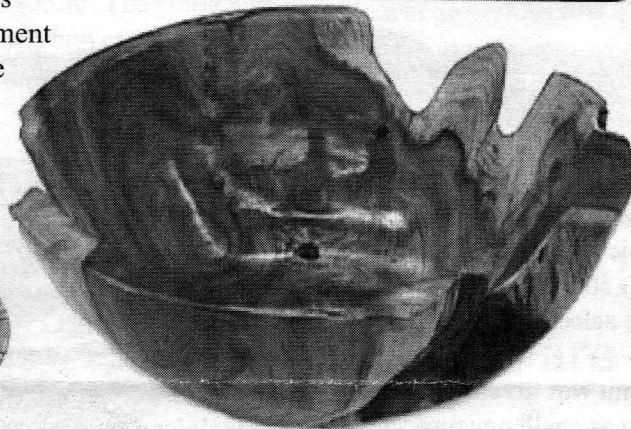
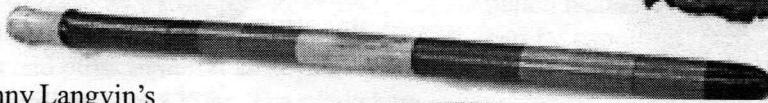
Jeff's redwood? and ebony box  
and spalted maple bowl



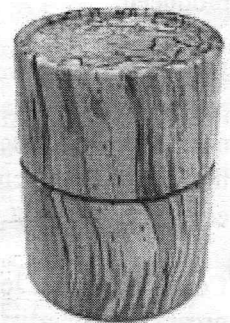
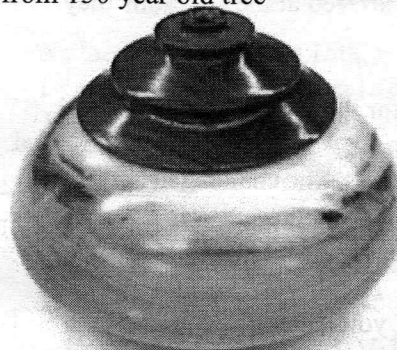
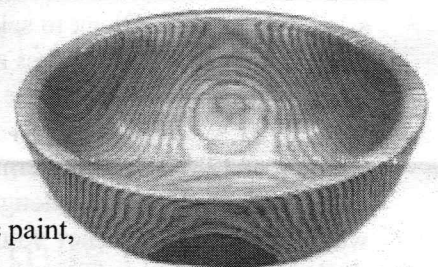
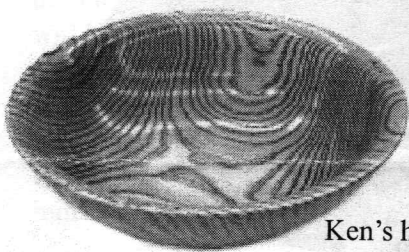
Lenny Langvin's  
Garden stand/ornament  
and Baton case



Andy Osborne's cherry burl  
winged bowl and closeup of  
little cheese board with  
inlaid fill



Ken's honey locus green and red bowls (wiped with acrylic paint,  
for effect) and yew bowl from 150 year old tree



Hank's small box assortment with large American elm and walnut box

Sidney's spalted beech box