

---

# AS THE WOOD TURNS

---

December 2006 Issue 115

---

## We Wish Yew a Merry Christmas



Ken explained how a Yew root ball could produce beautiful turnings.  
Once the rocks and dirt are rendered harmless!

(Yew new this was coming)

### 2006 MSSW Officers

**President** - Hank Cahill (781) 878-0234  
**Vice President** - Richard Friberg (508) 378-2436  
**Treasurer** - Wally Kemp (781) 871-1390  
**Secretary** - Mal Partridge (781) 843-3883  
**Librarian** - Leonard Mandeville (508-586-7679)  
**Newsletter** - Mal Partridge (781) 843-3883  
**Web site:** <http://www.mssw.sitelinker.org/>



### Next Meeting

Wednesday, December 13th, 2006, 6:00 P.M.  
**Christmas Party at Hank Cahill's House**  
Refreshments by: Members- See page 2  
Member Challenge: Relax and Enjoy  
Demonstration: Bring a hand made gift  
in a paper bag with long string for grab bag

## Meeting Minutes

The meeting was called to order at 7:00 pm at Hank Cahill's Dust Bowl

### President's Report and General Business

Guest Kathi Glynn has become a member. There were 40 members present at meeting!

Mal met Jack Nash at our Audubon exhibit. He was a founding member of MSSW.

Binders were made available for review which contained Holly Hill Farm Willson Lathe photos, Making Arrow Banding article by Phil Lowe from Ron Knapp, and details about Google Sketchup, a great free 3D drawing program.

An early gift was given to Hank by Mal, a book the "Divine Proportion", a favorite subject of Hank's.

Audubon pick up date is December 16th. John Murphy reported that sales were doing well.

An E-Mail was sent to Rich Silva, our Holly Hill Farm demonstrator, thanking him for an interesting time and including a copy of our newsletter with photos of the tour and a photo of an English Willson Lathe.

Newsletter expenses for 4 months of \$194.04 were given to Wally by Mal. Wally reported \$925.00 in treasury prior to these expenses. Dues for 2007 will be coming due which will build up treasury so we can afford demonstrators during the next year.

Wally has 7 pieces of 18" dia. x 3 ft. cherry and an oak burl available at his shop at 688 Main St. Hanover. Give him a call if interested - and bring a chain saw!

Lenny the Librarian reported that 7 videos are missing. Members should check out videos or books so we have a record for recovery if necessary. Two new videos were added: Spray Basics and Richard Raffin Bowl Turning. Nigel donated a DVD "From the Tree to the Table" by Mike Mahoney.

Jeff received 15-16 hand's up for those interested in golf shirts, short of 50 required for order. Other alternatives were proposed and will be reported on in future.

Bryan Conklin reported that Hull High School has put in for an AAW Grant to expand it's turning program.

New members should join AAW. We would like to have 100% Chapter membership. Wally has donated AAW Journals to our library for member reference.

There will be no Hand's on in December. There is a local House Tour at Hank's on Sunday December 10th. Our Christmas Party will be held at Hank's House on Wednesday, December 13th. See details below.

Nigel and Wally will be giving a Hand's On demonstration for segmental turning at our January meeting. Members interested in segmental turning should contact Nigel or Ian for setting up a personal hand's on session. Ian showed a digital angle gauge for setting accurate saw angles for segmental pieces. Wixey model WR300, \$40, @ Woodcraft.

Andy reported on the 2007 Yankee Symposium. A site inspection was held. It will be held in the University Science Building, which has audio/video available with pull down screens for viewing rather than tv's. A list of demonstrators is on the Yankee Symposium web site. They are still working on fundamentals Dave needs 7 grinders and large lathes are needed.

Harold Dyke proposed a visit to Westport Rivers Winery with the possibility of displaying our turnings there in the Russell Gallery exhibit area. It was agreed that an arrangement be made for next year.

Ron Knapp reported that the Society of American Period Furniture Makers plan a meeting at Philip Lowes shop in Beverly on Saturday, December 9th at 9am. A tour of Peabody Essex Museum is planned.

Wally and his wife plan a trip to Williamsburg in January for a symposium on 18th century furniture.

---

## Christmas Party

Wednesday, December 13th, 6:00 PM, **Hank's House**.

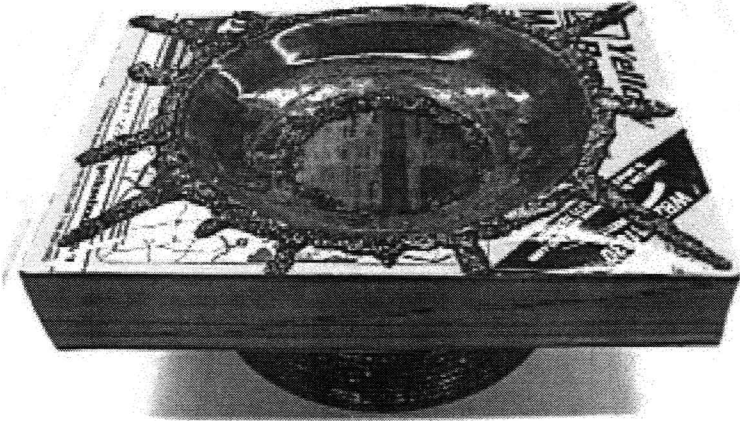
All members are welcome. Bring your spouse or a friend. If you want to participate in the Annual Grab Bag Event bring a Hand Made Gift (A turning or carving) in a brown bag with a long string for each participant.

Members should bring a **Pot-Luck** item of their choice. From appetizers to desert!

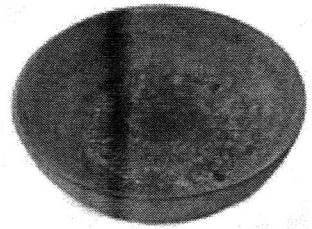
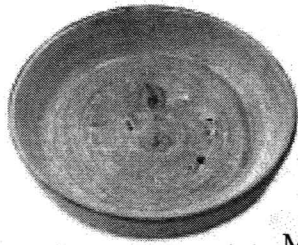
**Come and enjoy the evening!**

---

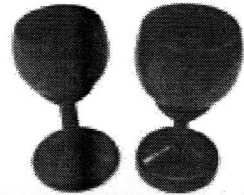
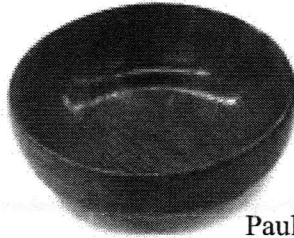
# More Show & Tell



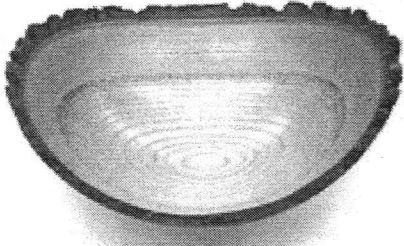
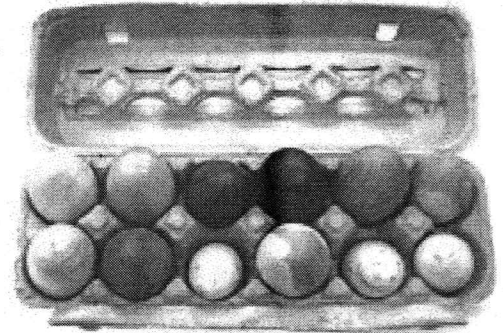
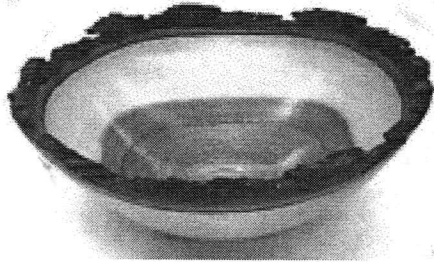
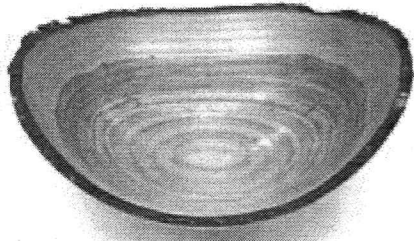
Ken's Yellow Crater (Yellow Pages) using super glue, coffee grounds and yellow glue. For South Shore Art Center "Works on Paper" exhibit



Mystery pieces



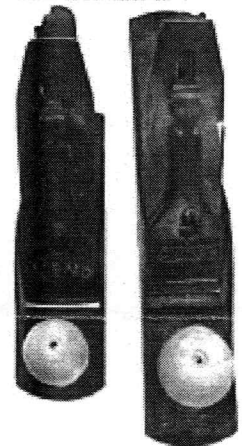
Paul's walnut bowl and egg cups with assortment of eggs



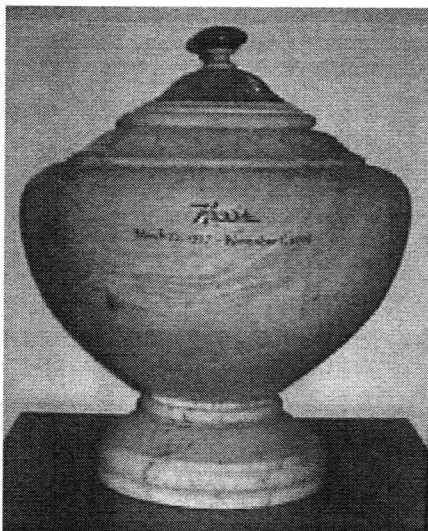
Peter's warm yellow ash bowls (one with round bottom) and hickory natural edge bowl. Also ornaments turned with skew - great low cost sellers.



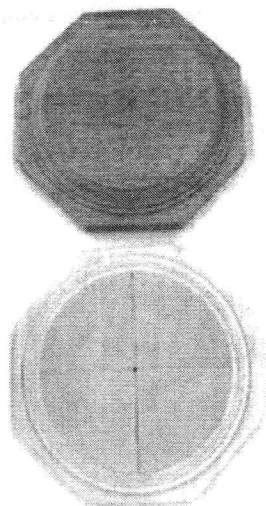
Ben's scoops



Mike's new knobs for planes



Richard's Great Aunt's Urn turned over a 23 1/2 hour period with only 6 hours sleep!



Richard's wall rosettes



Bryan's 3D scroll sawn pieces from wood and Corian

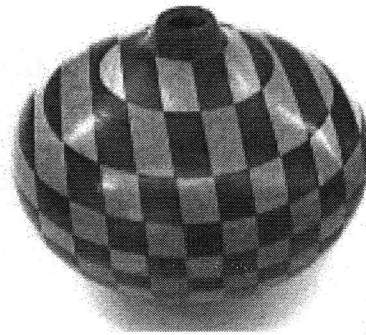
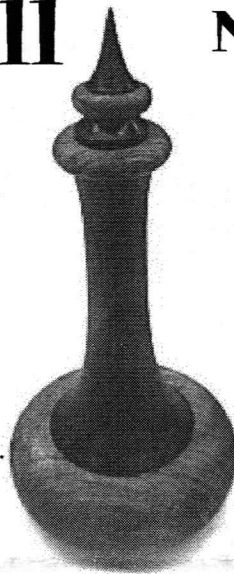


# Show & Tell

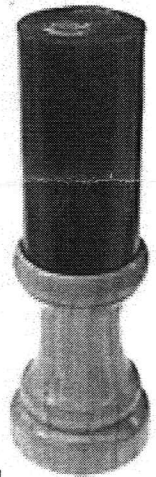
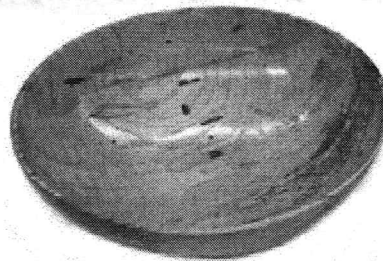
November 2006



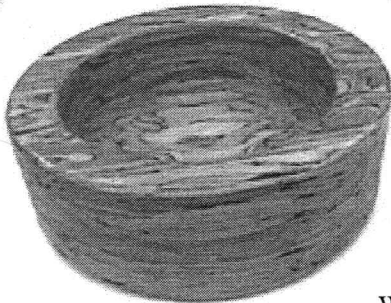
Ian's angel, cherry bowl and Genie Bottle from cotton wood burl with purple heart & maple veneer column.



Ian's walnut and Maple segmented piece

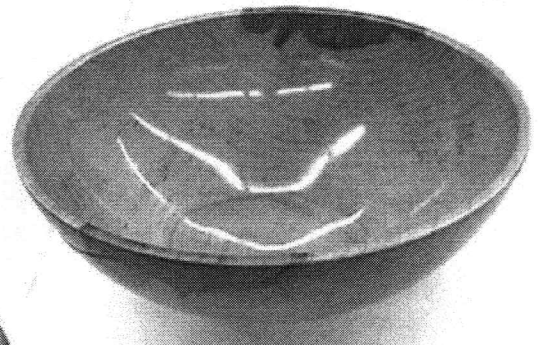


Jeff's box elder bowl and candle stand

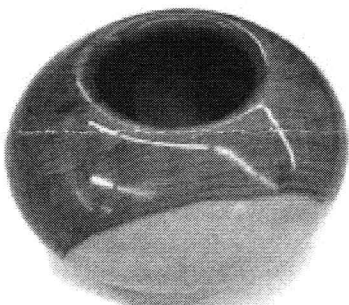


David Rice's maple burl piece and laminated beam stock bowl

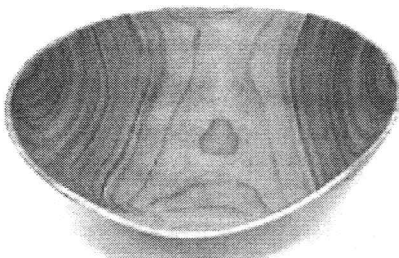
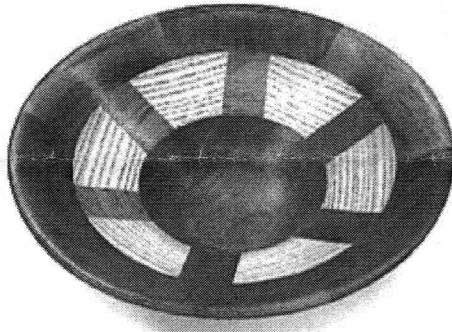
William Dooley's white oak burl piece (Eight months to finish)



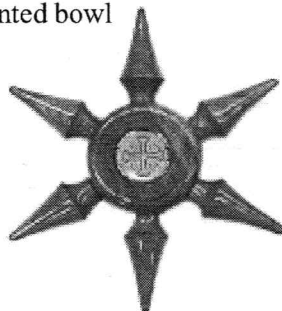
Nigel's maple bowl



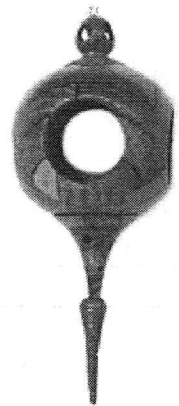
Bob Trucci's red birch bowl and segmented bowl



Andy's warped cherry bowl



Harold's cherry ornament with aluminum Jerusalem Cross



Lenny Langvin's mahogany 1790 Sheridan bedstead in 2" to foot scale and white oak ornament from Ironsides (USS Constitution) wood