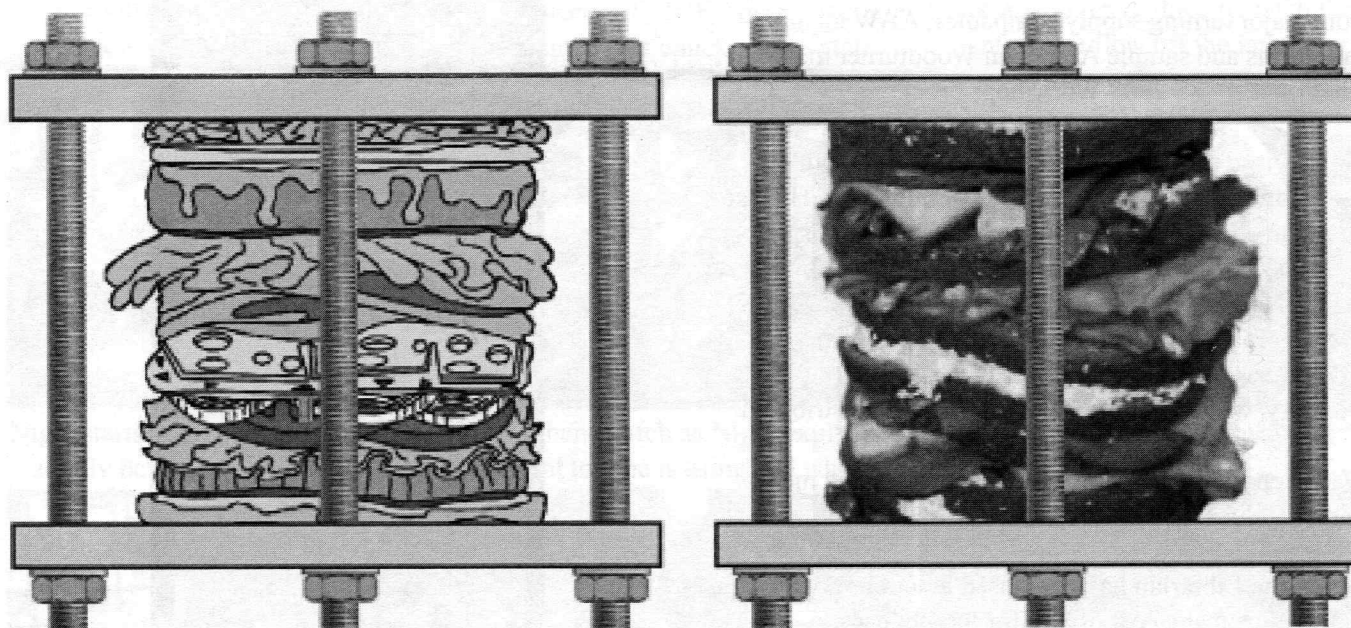


AS THE WOOD TURNS

December 2007 Issue 126

The Woodturners Sandwich Chuck



Woodturners eat well over the Holidays!
But they do have to worry about too many chips!

Thanks to Nigel for this delicious idea resulting from his sandwich chuck demonstration.

2007 MSSW Officers

President - Hank Cahill (781) 878-0234
Vice President - Richard Friberg (508) 378-2436
Treasurer - Wally Kemp (781) 871-1390
Secretary - Mal Partridge (781) 843-3883
Librarian - Leonard Mandeville (508-586-7679)
Newsletter - Mal Partridge (781) 843-3883
Web site: <http://www.mssw.sitelinker.org/>



Next Meeting

Wednesday, December 19, 2007, 6:00 P.M.
Christmas Party at Hank Cahill's House
Refreshments by: Members - See Page 2
Member Challenge: Relax and Enjoy
Demonstration: Our annual Grab Bag Event
and displays of good cheer!

Meeting Minutes

The meeting was called to order at 7:00 pm at Hank Cahill's Dust Bowl

President's Report and General Business

Hank introduced guest Mike Dempsey, from Ohio, who is attending North Bennet Street School.

A thankyou letter was received from NBSS for our \$300 contribution for lathe they plan to purchase. \$2350 has been received to date. Oneway has offered a 20% discount.

Correspondence included Surrey newsletters, Catalogs from major turning supply companies, AAW membership forms and sample American Woodturner magazines, and NBSS 2008 Workshops brochure.

Mal advised members that turnings on display at Audubon must be removed on November 30th. He also mentioned Hand Tool Demonstrations by guest speakers, to be held at NBSS Arlington location, 60 Lowell St., on November 30 and December 1st.

An obituary for member Med Hornecker, from Duxbury, who died recently at age 39, was distributed.

Wally reported \$2614 in treasury and informed members that dues are now due for 2008.

Lenny the Librarian has purchased a double DVD by Lyle Jamison at a cost of \$45 for the library.

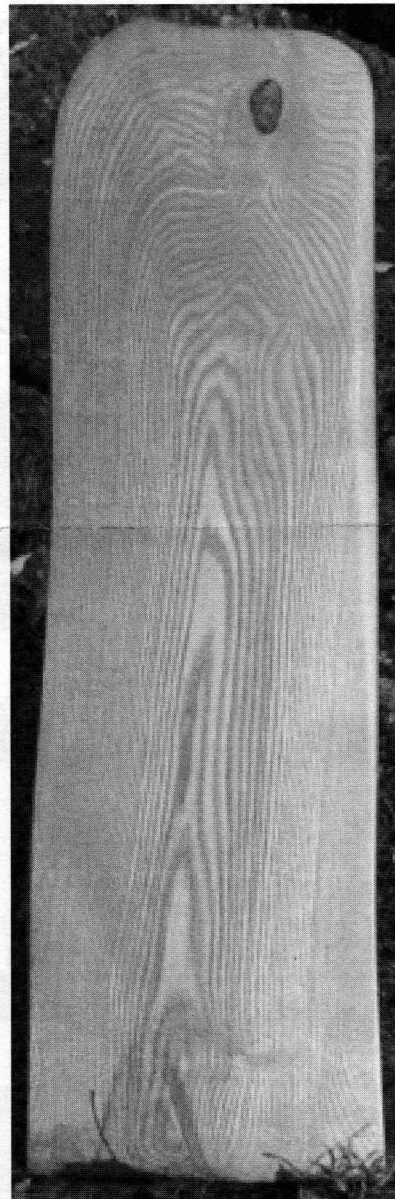
Our Audubon exhibit filled the rooms available and NBSS open house was well attended by our members.

Wally and Bill Dooley are working on a Boot sign for the Stetson House in Hanover. Nigel receive two Walnut tree crotches from were he was working. Ron mentioned that pallets can contain usefull material from China and India, etc. Wally is having problems getting his chain saw started and his shop gas stove won't start. Ian offered a service call\$. Bernie found a nail in wood from last months wood swap! No extra charge.

Wally will contact Ellyn Einhorn and invite her to our Christmas Party.

There will be a **Hand's On at Hank's Shop** Saturday, December 15th at 10am.

Jim Denker's White Ash "Spirit of the Lord"



The image appeared after the rough sawn board was sanded. Urethane finish - no stain - found in year 2000

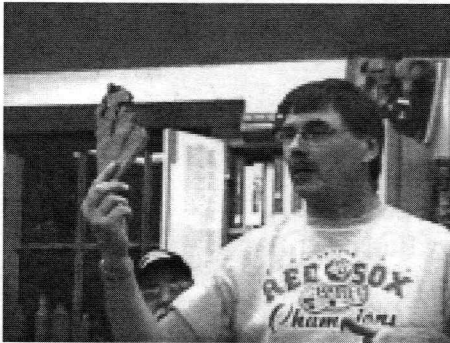
Christmas Party

Wednesday, December 19th, 6:00 PM, **Hank's House**
All members are welcome. Bring your spouse, partner or a friend. If you want to participate in the Annual Grab Bag Event bring a Hand Made Gift (A turning or carving) in a brown bag with a long string for each participant.

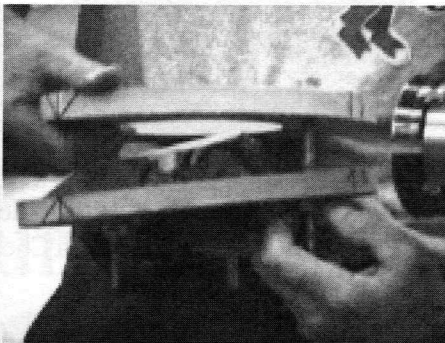
Members should bring a **Pot-Luck** item of their choice.
From appitizers to desert!

Come and enjoy the evening!

Nigel Showed Us How to Make and Use a Sandwich Chuck (Also Known as a Compression Chuck)



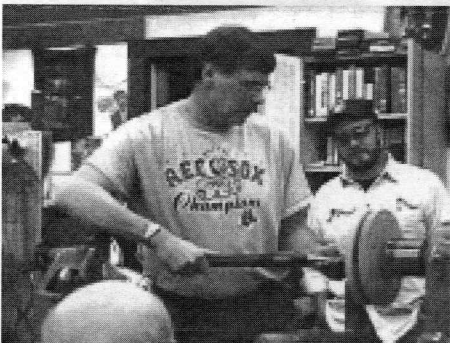
Burl offcuts can be used in sandwich chuck to create usefull turnings.



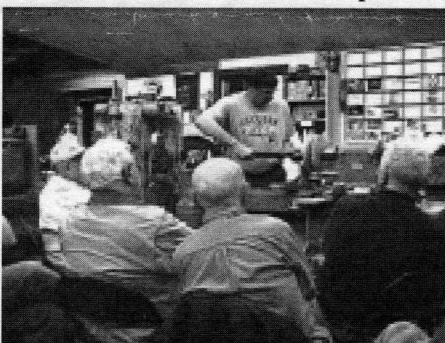
Two pieces of MDF, one a donut are mounted to a chuck or faceplate.



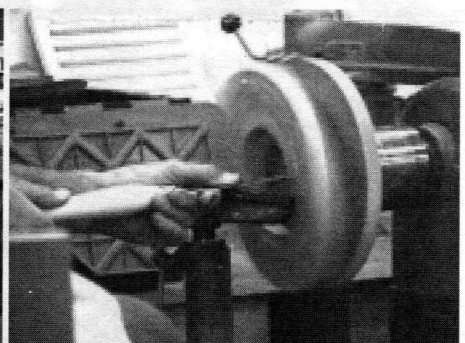
Hank was given a glove to catch the chuck if it flew off the lathe!!



Nigel starts to turn the piece clamped solidly between the chuck pieces.



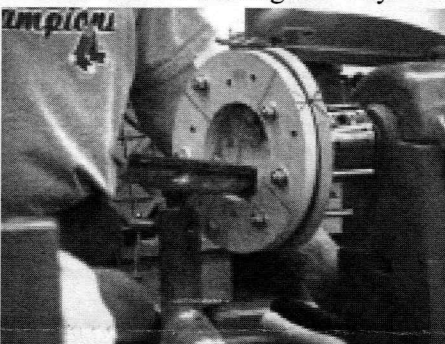
Members watch as Nigel explains what tool he is using and why.



Closeup of donut hole that allows access to piece.



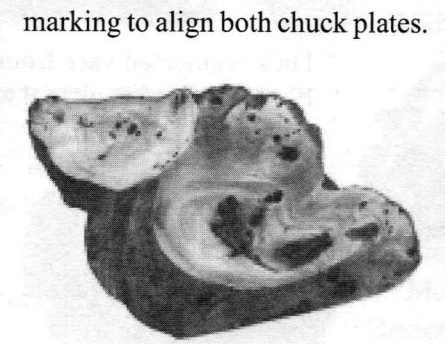
Note that the chuck pieces are not parallel, but conform to shape of stock.



The threaded rods are tightened with a washer and nut on each end. Note marking to align both chuck plates.



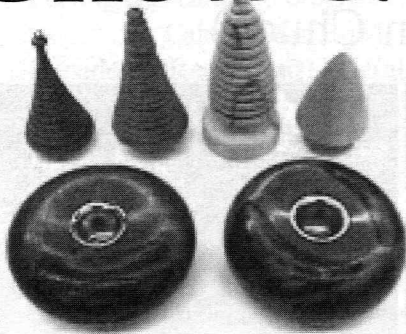
The finished turning which has been offset once to create dual cavities.



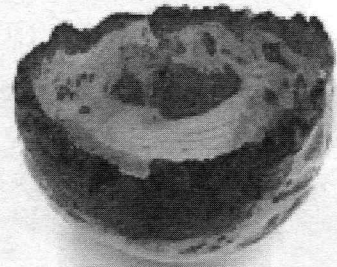
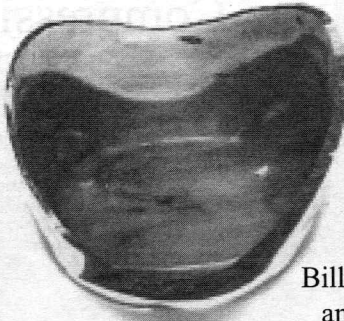
Examples of pieces turned in the sandwich chuck. It can also be use to finish off the bottoms of plates and bowls

Show & Tell

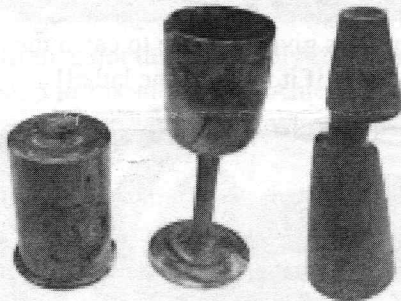
November 2007



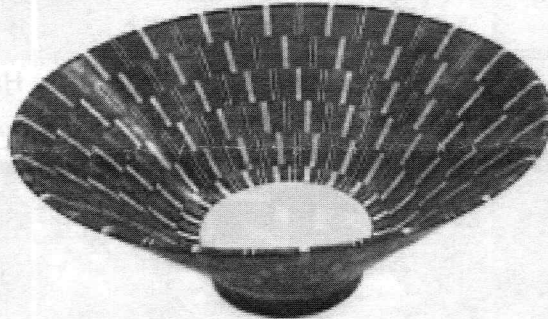
Paul O'Neills's Christmas trees and Walnut candle stick holders



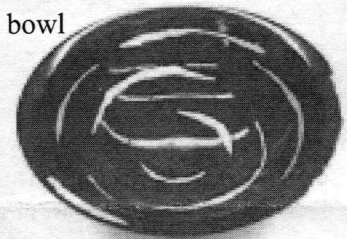
Bill Dooley's Cedar bowl and Cherry Burl bowl



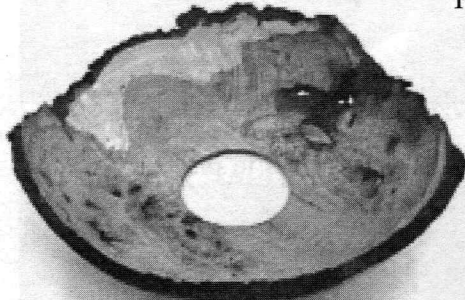
Jeff's box and purple yew root cup



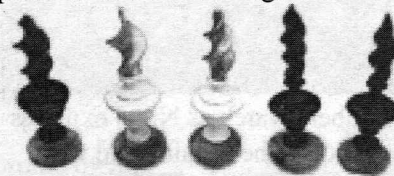
Ron's off-center turning and Cherry, Purpleheart and Walnut segmented bowl,



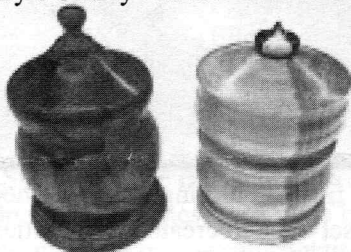
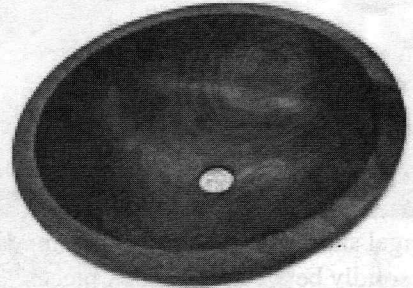
Andy's Red bowl with shapes masked with torn painters tape



Wally's Cherry "donut" bowl and Finials



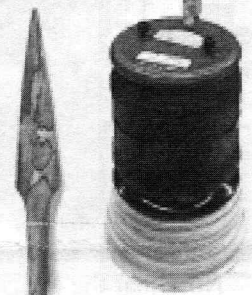
Nigel's Walnut bowl for his Dad with 1/2 Crown coin dated 1931 in bottom



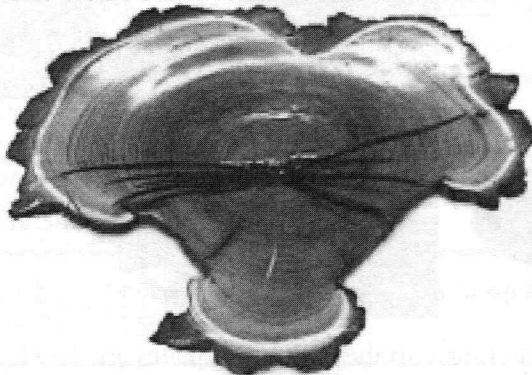
Mike Well's boxes from Hawaii Milo wood



Ian's segmented vase from Ipay cutoffs, Box Elder bowl and hook tool with Ipay handle



Don's Spalted Maple letter opener, an air actuator and base for flight simulator motion platform



Ken's Locust piece with brewed coffee grounds decoration and Silver Maple red aniline dyed plate



Mike Veno's chuck fixture for snowman molds

