

AS THE WOOD TURNS

December 2011 - Issue number 173 - Minutes of the November 22, 2011



Hank Cahill, our club president for many years, passed away Thanksgiving day morning

Hank went for his last ride in his red truck on November 30. Obituary details may be found <http://hosting-24109.tributes.com/show/Henry-E.-Cahill-92824408>

The club Christmas Party is going ahead as planned Tuesday 20th @ 6pm. Jane says the family wants it to go ahead. She also said that if anyone (members or spouses) want to help out getting it ready they would be welcome

MSSWT next "Hands On" will be December 17

Chain saw party Saturday, December 10th to harvest a red maple tree with burls on 58 Philips Farm Road in Marshfield.

Saturday, November 26th was a chainsaw party to harvest a large oak burl on State Street Hanson. Thirteen turners attended.



In the beginning Nigel got things started.



Jeff, Andy, Paul, Lenny M., Nigel, Dave R, Bob I, Ken, Sid, Bob T and Bill D. & Wally. Not pictured is Ron R.



Paul in full battle gear attacking the burl.

2011 MSSW Officers

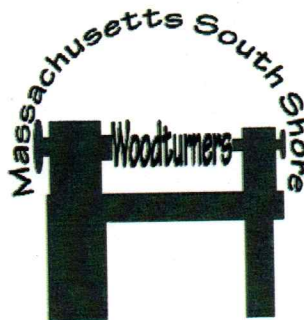
President- Hank Cahill
(781) 878-0234
hccahillandson@hotmail.com

Vice president Nigel Howe
(508) 537-3394
nbhturnings@yahoo.com

Treasurer Wallace Kemp
(781) 826-6254
bbarker417@comcast.net

Secretary Jeff Keller
(781) 878-7310
jkeller@nerej.com

Librarian Charles Rosen
(781) 848-6589
charlesrosen@comcast.net



Next Meeting

Tuesday, December 20, 2011
6:00P.M.

At Hank Cahill's *Dust Bowl*

Christmas/Holiday Pot Luck Party

Web site: <http://www.msswt.org/>

Minutes of the MSSWT Meeting November 22, 2011

Guest and new member- Skip Brown of Hanson

Hank- took a moment to announce that longtime member Webb Dyer had passed away the previous Thursday. His daughter has been in touch with the club and Webb wanted the club to have his woodturning tools, lathe and wood to be distributed among members as the group saw fit.

Wally said that our exhibit at the South Shore Audubon Society is up and had an open house Saturday, December 3rd. from 10:00 until 3:00 pm. Woodturners were encouraged to attend.

Saturday, November 26th was a chainsaw party to harvest a large oak burl on State Street Hanson. Thirteen turners attended.

There will be a second chain saw party Saturday, December 10th to harvest a red maple tree with burls on 58 Philips Farm Road in Marshfield. The tree needs to be taken down as well. The owner has a place to stack the branches and we will need a truck. The fun begins at 9 am.

Wally also reported that there is \$991. in the treasury. Dues are due now.

Charlie absent so no library report.

Wayne Miller commented that with regard to the Workmate stands for the lathes that we could replace them with the same but there is also a self contained unit with wheels. We can build these ourselves for less than the cost of the Workmate and it would work better. We decided to put together a work party. First we need some design refinements. It was decided that we will build 3 or 4 units. Don Dietrich volunteered to do the sketch up on his computer.

It was announced that Ruth Niles sells tools to make bottle stoppers. She has an ad in the back of the AAW magazine.

Nigel mentioned that we made a combination profit of \$180.44 from the last two woodturners who demonstrated for the club. Ian mentioned that it might be a good idea to promote demo day to nonturners as well.

Ken said he plans to make a purchase of super glue in sixteen ounce bottles in quantity. They will be available to members for \$20 a bottle. Let him know if you want thick, thin or medium consistency superglue.

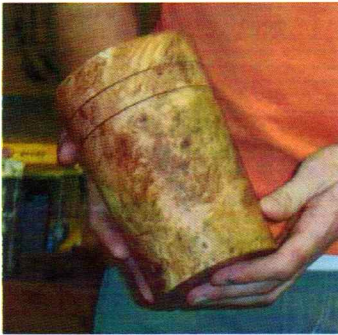
Don Dietrich announced he is moving and has a number of items for sale at discount. "I have anything anybody could want. I'm looking for 40-45% of the original cost. Tools are less than ten years old and have no rust." He has a list.

Bob Trucci said he plans to submit an article on Glen Lucas for the January or February newsletter.

Show and Tell



Turned items on display at the start of the meeting



Tim Ayers with his vessel of Maple burl turned & filled w/CA glue & sawdust, finished with Tung oil & beeswax



Paul O'Neill shows us his Walnut platter and his hat shaped Cherry bowl



Wayne - Zebra wood segmented challenge project. *"Something I've never turned before"*.



Sid has a tier box of White Oak from the book of 50 boxes. Each level has a compartment



Bob Sutter shows us his segmented Walnut bowl with it's separately turned base. Finished with oil and wax and a Zebra wood rice bowl and spoon





Nigel has a Maple burl bowl that started as a big piece and became smaller on the lathe. He added color and left the natural edge. Lacquer finish.



Ian shows his Christmas holiday ornament made with a shell center. He used a 1/4" Bedan fashioned from a 1/4" chisel from Home Depot.



Phil has a piece of Maple burl from Woodcraft from which he turned a small bowl.



Bill George shows off his Birch bowl with Tung oil finish. He left some bark on for a partial natural edge.



Ken displays his multi axis Cherry bowl which he bleached and added coffee grounds to the finish



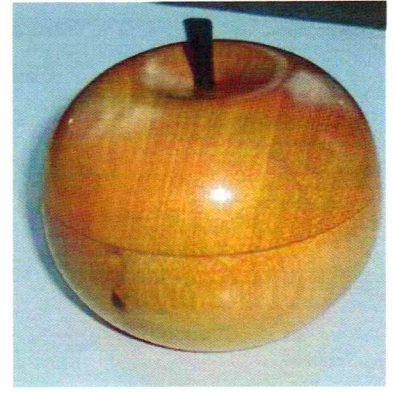
Ken's explanation of his bowl turned using a faceplate. *"After turning and sanding, tenon with many screw holes was removed/reverse turned with a friction chuck. 5 different axis' were used, standard center axis plus at one each axis at 90 degree offsets. Standard Ken coffee grounds, paint and glitter interior. Bowl wall needs to be 1" thick to keep from going through the side wall with so many different axes. Marbles were initially just to reflect light inside the vessel. The noise was a bonus. After bleaching, the designs were carved and dyed. Then I used urethane oil as a finish over everything inside and out. I'm sure the glitter would've flaked off if they weren't sealed underneath the urethane oil"*.



Wally shows off his nest of Maple burl natural edge bowls turned at Fred Ayers shop using the One Way Coring System.



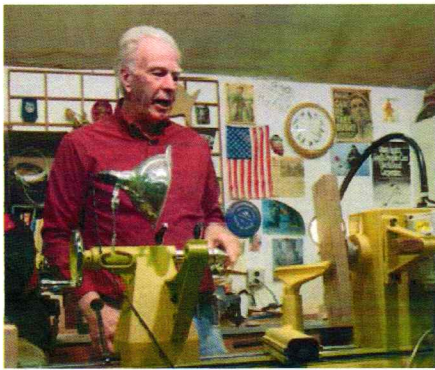
Bill Dooley holds up his hollow form made from North Carolina Holly. He said someone needs to finish it.



Osage Orange box w/Ebony stem turned in the form of an apple by Jeff

Demonstration

Ken Lindgren presented a demonstration on multi axis turning. He mounted a 2 x 4 on the lathe centered in the middle. This is a single axis. When spinning, you're dealing with a ghost image. He stated that he would deal with the mechanics of seeing the image. Normal light is not enough. He used a magnetic base lamp mounted on the side of the lathe for added light. He said that you have to "feel for the wood with your gouge". Find the edge. With a slight rotation of the gouge, you can now begin to cut it. The light from above, in front and behind will help you see the image.



Initial setup with extra lamps to help see "ghost" image

Ken says that rather than "riding the bevel" you should "press the bevel" to have greater control. Use only slight pressure however.

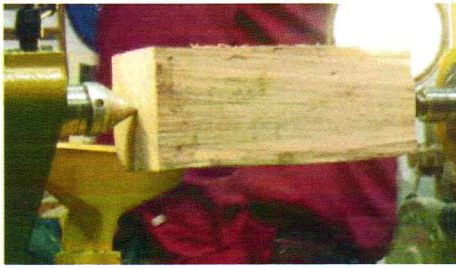


Positioning the gouge for cutting



Results of first cuts

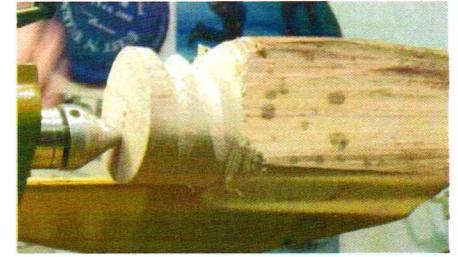
He went on to say most multi axis turning is done on spindle work. For example, the female form is turned by first establishing the center to get the blank true. Then move the tail stock to the left or the right. Using the new center, create the mid section of the female form. Then move the tail stock 180 degrees to the other side to do the chest and shoulders. Move the tail stock to the center point for the neck and head. You are using three different axis. The form varies by how much you move off center.



Starting out



rotating and partially cut



Results of partially turning on 3 centers

Multi axis turning is figuring out what's going to happen in advance. There are no rules other than safety. Ken recommends that you use a 2 spur drive as it holds the wood more securely than four. He says he turns the piece on the lathe as fast as possible and still maintain it's balance. That way it's easier to turn. Conversely, the bigger the offset, the slower the speed.

Some sample multi-axis turnings:



There have been several articles written in the AAW journal by Barbara Dill :2007 V22.3 34-38, V22.4 52-57 and 2011V26.6 that contain many drawings, photos and illustrations. The articles are a good read if someone wants to get started.