

---

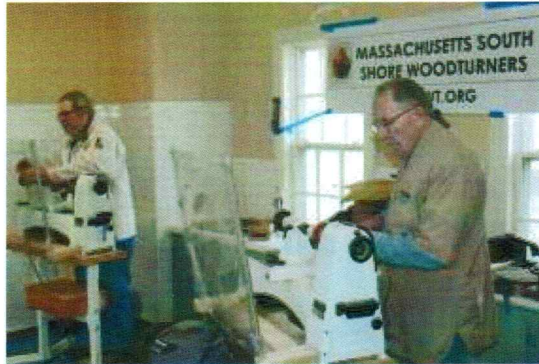
# AS THE WOOD TURNS

---

## December 2018 - Issue number 249

Hands On planned at Hank's Dust Bowl : December 8<sup>th</sup>, January 12<sup>th</sup> from 9:00 am until noon

*We invite beginning turners to a learning opportunity at the Hands On for one on one instruction. Spindle or bowl turning techniques will be covered. Please reserve your lathe with Tim Rix, or Pablo Gazmuri @ [pgazmuri@comcast.net](mailto:pgazmuri@comcast.net)*



Steve and Joe on the lathes at Audubon.

## Minutes of the November 27 meeting

Visitors- Paul Fadaca, Chris McAvoy from Weymouth and Bob Courchesne from New Hampshire

2019 dues are now due. They are \$50. You can pay online by credit card or by sending a check or cash.

We will be demonstrating February 8th (Friday) at Rockler's store in Porter Square, Cambridge. They will supply the wood. Michael Veno said he was interested in participating.

The Holiday party will be December 18th at Hank's Dust Bowl. Ava Rothwell is in charge of organizing things. All are welcome, bring a salad, appetizer, dessert or? Also bring your wife, significant other or friend. Starts at 6:00 pm.

Gift swap - After we eat, we will hold a gift swap. If you want to participate, bring an item you made (turned) wrapped in a paper bag tied with a long piece of string to be dropped into a large box. If you put something in, you can pull something out and try to guess who turned it.. Numbers will be drawn to establish order of the

### MSSW Officers

**President-** Steve Wiseman  
(508)-285-9394 [stevwsmn@aol.com](mailto:stevwsmn@aol.com)  
**Vice president** Len Langevin  
(508)-789-4211 [lennysminiatures@gmail.com](mailto:lennysminiatures@gmail.com)  
**Treasurer** John Duggan  
(508)-583-7930 [john.duggan06@comcast.net](mailto:john.duggan06@comcast.net)  
**Secretary** Tim Rix  
(617)-259-5618 [rix.tim@gmail.com](mailto:rix.tim@gmail.com)  
**Librarian** Lenny Mandeville  
(508)-586-7679 [manleo@comcast.net](mailto:manleo@comcast.net)  
**Webmaster** Tim Rix  
(617)-259-5618 [rix.tim@gmail.com](mailto:rix.tim@gmail.com)



### Tuesday December 18, 2018

- at Hank's dust bowl at 409  
Washington St., Abington, MA at 7 pm

Refreshments - by all

Club Christmas party

draw. Certain rules apply: It must be something you made (at least partially turned), no [I.O.U.s](#) or uncompleted projects. Nothing store bought. Only club members can participate.

Demo Day will be held April 20th, 2019. We need volunteer turners. Let Steve know if you are interested.

At the last meeting we discussed finishes. There is a lot of conflicting information. Is your wood toxic? Purple heart with alcohol on it turns poisonous. Do some research when you plan to try a new finish.

Tim announced that the AAW has some excellent videos online such as the one entitled, "Woodturning Fundamentals".

Steve said that we will be meeting with the Arnold Arboretum on December 12th. They will have wood for us. Show up there in Jamaica Plain if you want some. Also the Arboretum is looking for a donation. The club voted to give them \$75.00 this year.

Elections - We need a new secretary as Tim is stepping down. Also Steve mentioned that he will be undergoing radiation treatments for his prostate cancer daily for 9 weeks.

Elections were held for President, Vice President, Treasurer and Secretary and the incumbents Steve Wiseman, Lenny Langevin and John Duggan were reelected. Kevin Mulligan will take over as Secretary in January for Tim.

John Duggan said the club has \$1800 on account in the bank.

Lenny Mandeville said he has ordered a video by Todd Sokowlsky on coloring.

Lenny Mandeville presented a demo on coloring your work.

He started by telling us that with his test piece he drilled a hole in the center of the blank to thread onto the headstock of the lathe. He then turned a recess into the center on the opposite side and mounted it into a chuck. Next he flattened the face and sprayed it a flat black using a combination 2X Primer and Paint. Next he cut a recess into the face turned it around on the lathe and shaped the back side with a bowl gouge using a pull cut. Lathe speed was around 1200 rpm (the faster the speed,, the smoother the cut). He then turned it back around, faced it off and sanded it.



Lenny began showing us the disc to be turned and decorated



It has been drilled and turned with a recess cut into the opposite side which Lenny is mounting in the chuck.



Lenny shapes the back of the piece.

Centrifugal decoration- Len used a large box in his demo to shield the audience from paint splatters. He used Acrylic paint which he applied to the piece before spinning it on the lathe to create the end effect (see accompanying photos).He says he lets the paint dry overnight.



Lenny turns a recess in the center of the piece.



The piece now has a box mounted around it in place to catch paint spatter



The design takes shape while spinning as seen on the video monitor.

Chain Decoration- Len first selected color- red, green and white. He applied the colors to the disc and proceeded to drag a chain through them. He advised using an egg crate to hold the paint prior to using the chain as you will use less of it. The effect was dramatic.



Lenny applies color to his chain



Lenny drags it across the flattened surface



The video shows the dramatic result



Here we can see the different effects using Lenny's chain method of paint decoration

## Show and Tell



Pictured are member's turned items for Show & tell



- Bill Martin showed [1] holds a salad bowl he rough turned, placed into a bag of wood chips and had it crack. He used CA glue and shavings to fill the crevice; [2] the finished sugar Maple bowl; [3] a chip and dip bowl turned from Hickory. The small center was turned separately and added; and [4] us a snow man and some Christmas trees turned from spalted sugar Maple



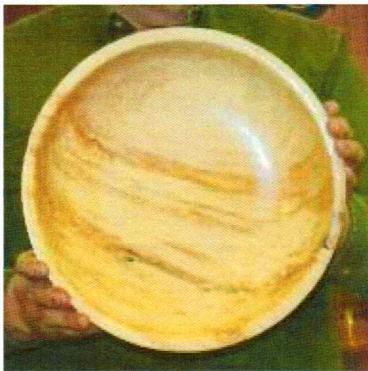
Kevin has a hollowform turned from mahogany segments. He turned both halves and then glued them together  
 Kevin also showed a piece of Eucalyptus burl with a Cocabolo bottom. Since it was spongy, he dried it in the microwave and dipped it into an epoxy acrylic resin (Alumulite). He then turned the outside and inscribed "Shalom" on the side. It has a battery operated light inside. He sanded it with 600 grit compound and buffed it. The finial is ebony



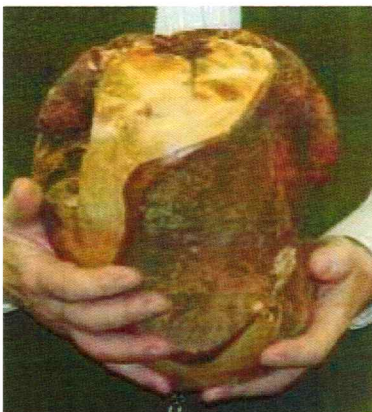
A close up of Kevin's spalted resin box with pedestal.



Joe holds a small Cherry bowl with a natural edge. He used a rotary sander to remove the bark from the edges and used Formbys' Tung Oil as the finish.



Joe also showed us one of Nigel's rough turned Maple bowls that he finish turned, an Oak bowl (also started by Nigel) in which he used a water based dye to make it dark brown and finished it using a Wipe On Poly, and a piece of what was a 5" by 5" by 5" Eucalyptus cube he cut in half. This half shows the curved corners. It still needs a top to be turned



Andy holds a hollowform turned from a tree root. He trimmed and hollowed it and it came apart, so he used glue and coffee grounds to put it back together. He finished it with urethane oil and buffed it.



.Wally showed us a figure "- He said everything need not be turned". This was an item he was given by Marie Anderson of Stonehouse Antiques some years ago





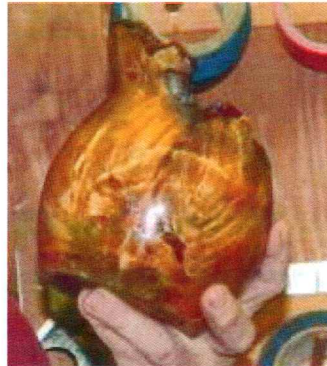
Wally also told us about the large burl he was given which came from a root. After hosing it down it was still around 150 pounds. He used a cutter designed by Jim Denker to partially hollow out the inside. Ken Lindgren took it for awhile and worked on it also. After Wally got it back from Ken, a friend, Christine Brennan saw it and told Bob Parker of Ember restaurant about it. It is now on display in the Embers dining room



Ken Lindgren is holding a large bowl with a crotch in the middle. he said he turned both sides rather than split it in the middle to get the most definite feather. He said that due to it being unbalanced, he turned it at a slower speed than normal (15-350 rpm). He finished it with urethane oil and buffed it.



Paul O'Neil has a small bowl with a medallion in the center. It is turned from a small piece of wood from the Mal Partridge sale.



Bill showed a natural edge hollowform, and a small Norfolk Island spalted Pine box. Nice piece.



Bob Courchesne showed a small bowl with a feather. He used Mahoney's Oil Finish and buffed it, and a Pear burl bowl with some nice color. He used Mahoney's Oil Finish and buffed it also.



Lenn holds a Silver Bell burl which he said was a very hard wood and buggy. He used 5-6 coats of poly as a finish.



Len has "South Shore Nessie" that he and Ken Lindgren have been passing back and forth adding more detail and decoration to. Here Len shows us the color he added with berry decoration to the hollowed out parts. Lenny also showed some scarf pins and rings he turned for a client. They are wood, but look like bone.

Steve showed an ornament hollowed from purple resin, and a segmented Mahogany bowl turned from glued together cast off pieces from South Shore Millwork.

**James library** one day Christmas Craft Fair Saturday, December 1<sup>st</sup>,



Exhibitors - Andy Osborne, Jeff Keller, Dusty Destrampe, Bill Dooley and Lenny Mandeville.

Items for sale at the James show

**Audubon Craft** show for the Christmas Holidays began with the Open house on Saturday, December 1<sup>st</sup>. Exhibits should be dropped off the preceding week and can remain until Thursday, December 20<sup>th</sup>.



Steve turns a top at the Massachusetts South Shore Audubon Society Show



Joe Centrino takes a break to answer a viewer's question



Items for sale at Audubon

### Upcoming Events

Our club Holiday Christmas party will be held Tuesday, December 18th.

### Articles of general interest

From: **peter soltz** <[psoltz29@gmail.com](mailto:psoltz29@gmail.com)> "Sidney and I have combined our collections of Woodsmiths, and we have issues 7 thru 145 available for no charge if one our members would like them".

### AAW Information for New Wood Turners

The American Association of Woodturners maintains a site for those interested in learning about woodturning. It has lots of free information about getting started in woodturning. While we recommend that everyone interested in woodturning join the AAW, there is lots of free information for beginning and seasoned turners alike available in the Discover Woodturning pages.

<http://www.woodturner.org/?page=DiscoverWTHome>

**Items For sale at the Club store :** – contact Ron Reynolds at [reynoldsron@comcast.net](mailto:reynoldsron@comcast.net)

JSP respirators spare parts (batteries, tear off shields, filters, pre-filters, and replacement face shield) available in the store



MSSWT MEMBER STORE

GLUES:		PRICE
	2 OZ. CA	4.50
	2 OZ. RUBBERIZED	6.00
	8 OZ. CA	13.00
	16 OZ. CA	23.00
	<b>THICK, MEDIUM, THIN: SAME PRICE</b>	
	2 OZ. ACCELERATOR (spray bottle)	3.50
	8 OZ ACCEL. REFILL	5.75
	2 OZ. DEBONDER	3.25
	4 OZ. EPOXY	6.00
	2 OZ. REPLACEMENT CAPS	0.50
	LONG NOZZLES	0.75
	2 OZ. EMPTY BOTTLES	0.75
<b>ANCHORSEAL:</b>		
	LARGE (approx 1 gallon)	16.00
	MEDIUM (approx. 1/2 gallon)	9.00
	SMALL (approx. 1 quart)	5.00
<b>SANDING DISKS:</b>		
	2"	3.50
	3"	4.50
	2" or 3" Replacement H&L Disk	0.50
	2" HOLDER	10.50
	3" HOLDER	12.50
	2" BLUE HOLDER	14.50
	3" BLUE HOLDER	16.50
	1/2" SOFT INTERFACE PAD EXTENSION	5.50
	3" HANDY SANDER (Palm Sander)	8.50
	SANDING TACO	4.50
	2 or 3" HAND HELD HOLDER (Kidney Shape)	12.00
<b>CLOTHING:</b>		
	CAPS	15.00
	TEE SHIRTS	16.00
	2X TEE SHIRT	18.00
	POLO SHIRT	27.00
	2 X POLO SHIRT	29.00
<b>MISCELLANEOUS:</b>		
	3" Lambswool Buff	9.00