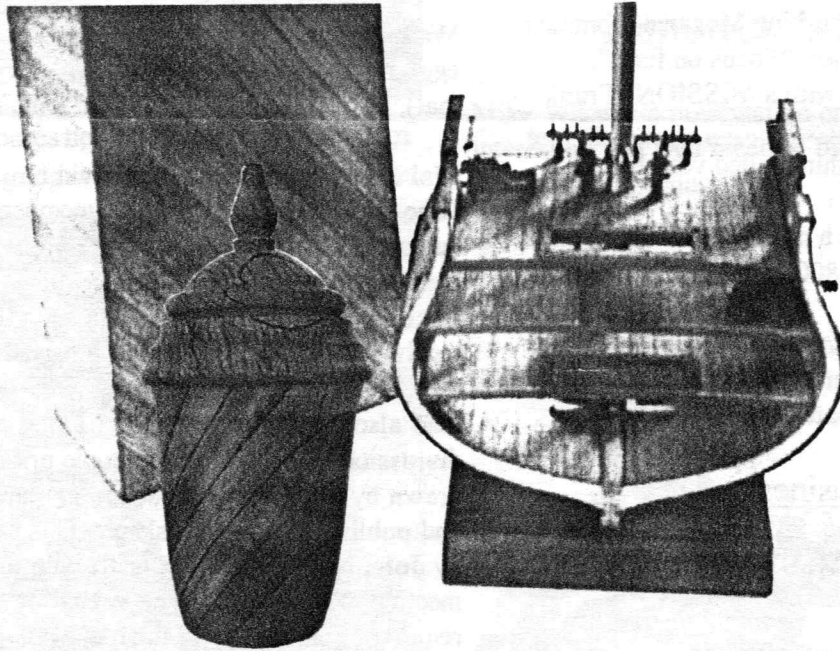

AS THE WOOD TURNS

February 1999

OLD IRONSIDES Only Turns Once A Year*



Laminated Oak from the restoration of the USS *CONSTITUTION* was used by Hank Cahill to turn a lidded container shown with a piece of the lamination and next to a sectional model of the *CONSTITUTION* under construction by Mal Partridge

The laminated white oak was used for combination standing and hanging knees on the birth deck. They replaced the essential hanging knees that were a part of the ship historically. They will not shrink away from their bearing as the original knees had a tendency to do.

As turners it is fitting that one of the men responsible for restoration of the *Constitution* is Donald **Turner**, the superintendent of the Repair & Maintenance Division. For details on this restoration read the 200th Anniversary edition of **Old Ironsides** by Thomas C. Gillmer.

* Each year on the 4th of July, *Constitution* moves down the harbor on her annual **turnaround** cruise.

1999 MSSW Officers

President - Hank Cahill (781) 878-0234
Vice President - Gary Levine (781) 843-3695
Treasurer - Wally Kemp (781) 871-1390
Secretary - Charles Rosen (781) 848-6589
Librarian - John Murphy (781) 834-1179
Newsletter - Mal Partridge (781) 843-3883



Next Meeting

Tuesday, February 25, 1999, 7:00 P.M.
At Hank Cahill's *Dust Bowl*
Refreshments by: **Richard Freitas**
Topic Assignment: **Richard Friberg**
Backup: **Steve Sarro**
Demonstration: TBD

Meeting Minutes

The January meeting was called to order at 7:05 pm at Hank Cahll's *Dust Bowl*

President's Report

Hank introduced five visitors: **John Barrett** of Pole Lathe fame, **Toby Lorenzen** who is preparing the CNEW web site, **Greg Drew**, **Paul Marks** and **Mike Wheeler** our guest speaker.

The February issue of Woodturning Magazine contains a number of interesting articles: "Focus on form", "Spindle school", and "Man with a MISSION" Frank Sudol who uses a unique, rugged boring bar (weight up to 180 lbs.) to complete his thin-walled vessels.

Craft Supplies no longer has a contract for subscriptions to Woodturning Mag. Call 1-800-225-9262 to subscribe.

Treasurer **Wally Kemp** reported \$1044 (and growing) in the treasury. Librarian John Murphy said there are no dead beats at this time, all material accounted for.

Old Business

It was agreed that the 1998 MSSW officers would remain in office for 1999.

The Sharon Arts Center exhibit was visited by **John Murphy** during a snowstorm in NH. The layout was professional and well illuminated. The turnings were not just laid out on tables or crowded together. Acrylic stands helped display the pieces effectively. All the displayed turnings were most impressive and "Vessel with Feathers" by William Haines was best of show. **Wally Kemp** also visited and was also impressed. The exhibit is open through March 7, 1999. Admission free.

Wally will head the group for the AAW Challenge project. Important: Bring a sketch of your idea for this group project to the February meeting.

New Business

Ernie Grimes mentioned the Habitat for Humanity bird house project. The Bird houses are due at the March meeting for April donation. All Members should participate - the bird houses don't have to be all turnings and don't necessarily have to accept birds!

Suggestions for demonstrators at future meetings were made including Al Sturt and Tom Kamila with the thought that the demonstrations could be shared with CNEW and CCW members as CCW did recently.

Janet Collins offered to demonstrate "Grinding your favorite tool and the problems you may have getting the perfect grind".

John Murphy suggested Al Barbour from Cape Cod Woodturners to discuss *Photographing Your Work*.

Wally suggested a monthly challenge project such as an egg turning, thin plate (we did that), bird house (doing that), project from wood 2x4 4ft. long, etc.

Mal Partridge thought we should have the MSSW lathe set up for the meeting so members could practice, demonstrate techniques, or solve problems other members might have. Also after the wood raffle a brief discussion of how best to mount and utilize the wood received would be helpful and informative.

Mal also suggested a monthly **Topic assignment** for discussion by members. The topic presenter will be drawn by lottery with a backup for each meeting named and published in the newsletter. This idea was seconded by **John Murphy** and will start with the February meeting. The topics can be **verbal or active** as required. For example if the topic is "What is the best bowl gouge shape" a discussion could precede a demo as was done at the January meeting when Hank and others demonstrated for **Janet Collins** and other members the use of her new Glaser gouge. All members should become involved in the discussions and demonstrations. Let's give it a try!

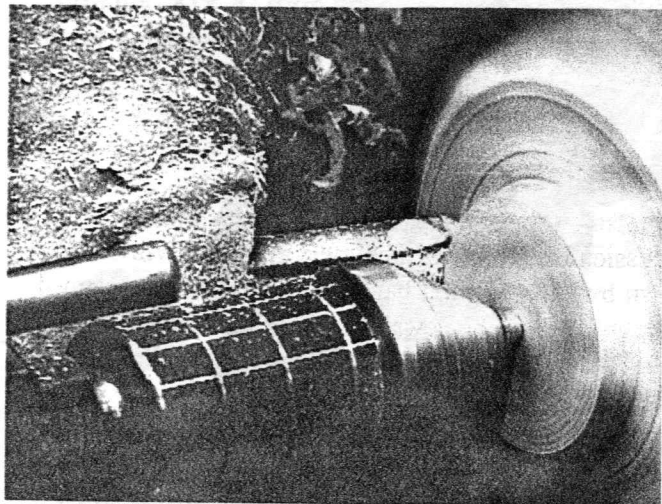
A dues increase of 12 cents to adjust for the postal increase was turned down for some reason. Perhaps it didn't make cents.

A binder with color copies of the newsletter is available for viewing at the meetings.

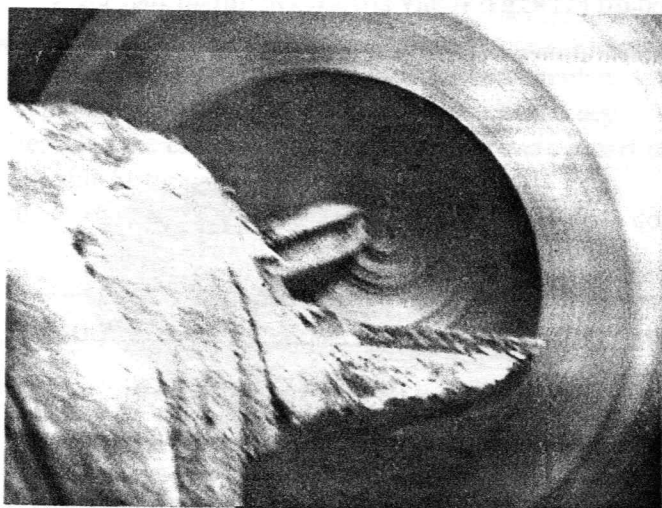
Important: For the February Meeting:
Bring a sketch of your AAW challenge project suggestion
Check to see if you are the Topic assignee or backup on front of newsletter



Janet Collins compares her Glaser gouge with one of Hank Cahill's bowl gouges and a demonstration began



Hank shows suggested technique to avoid catch



Hank hollows blank using a number of techniques suggested by members crowded around lathe

MSSW web site up and running

Charlie Rosen has our web site available and is seeking help from members for contents and ideas.

WWW.GIS.NET/~1CROSEN

This is Charlie's personal web site being furnished at no cost to MSSW for making information about our group and members turnings available to others.

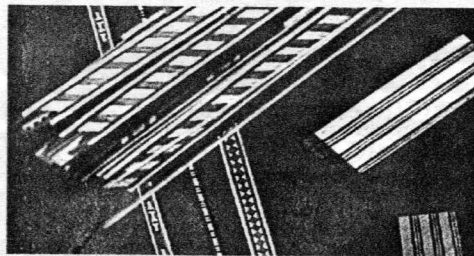
Tomorrow's Antiques

Mike Wheeler's presentation on Antiques was most interesting and well received by members and guests at our January meeting.



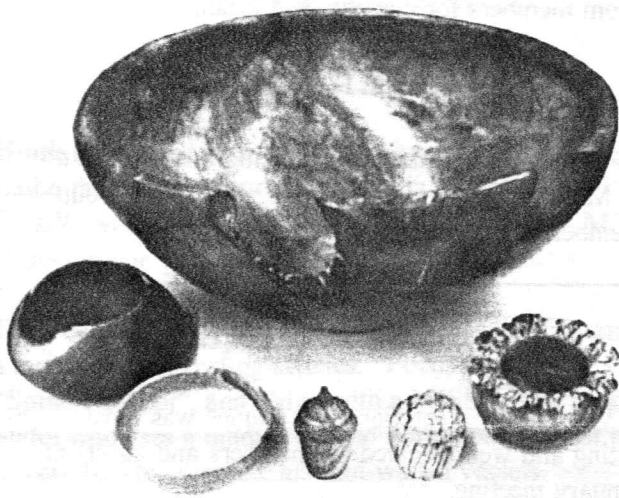
What am I bid ?

No, it's not an auction but Mike Wheeler explaining how he brings antiques back to original shape and form.

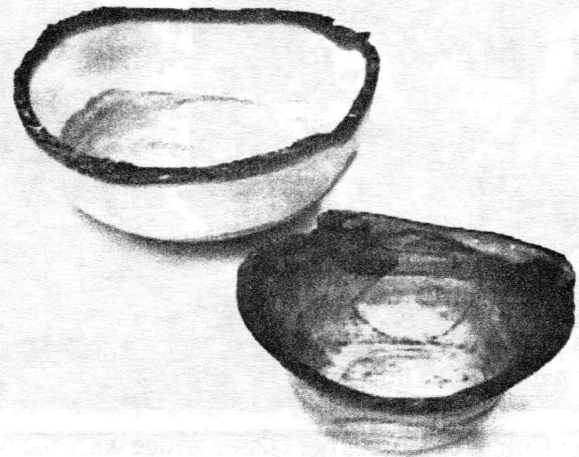


Inlay banding fabricated by Mike for his Antique reproductions and repair

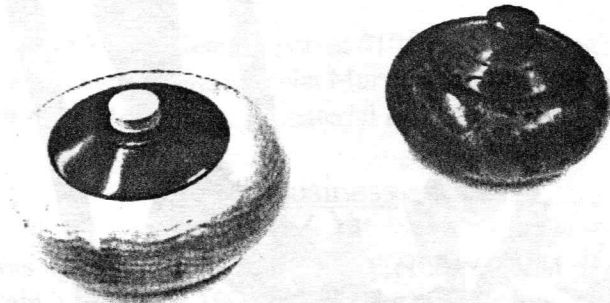
Show and Tell



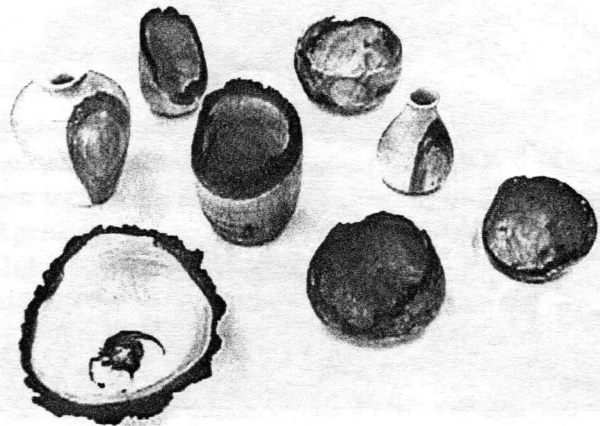
Hank Cahill showed these fine maple and walnut pieces one with carved edge



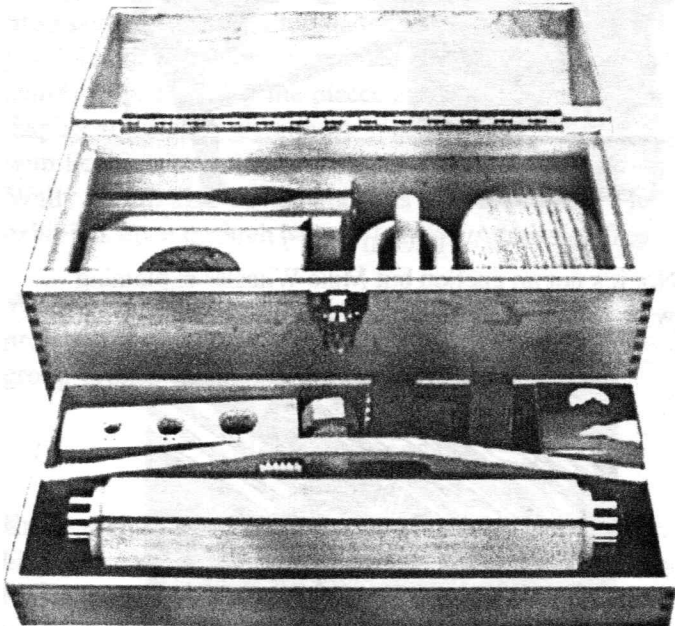
Wally Kemp turned ash bowl from 18"x18" log from which he cut off pith - also shown spalted maple bowl



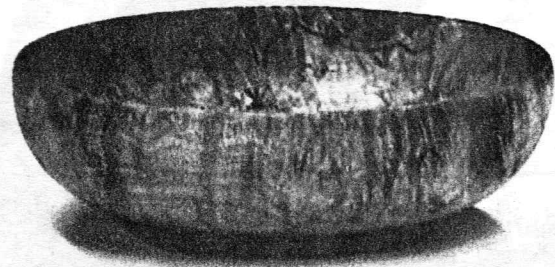
John Murphy's basswood/walnut and walnut burl lidded bowls (John will demo at future meeting)



Richard Friberg is really productive - many nice pieces



Mal Partridge's Maple toolbox with assortment of projects: Kaleidoscope, boxes, threaded objects, etc.



Janet Collins turned this beautiful figleaf maple burl bowl - note how raised base gives floating effect