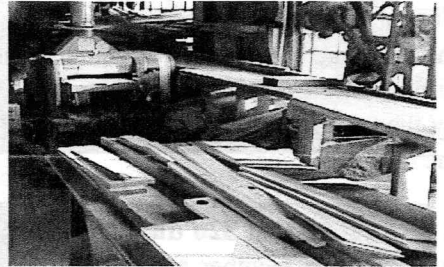
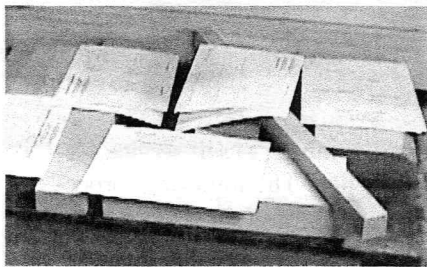
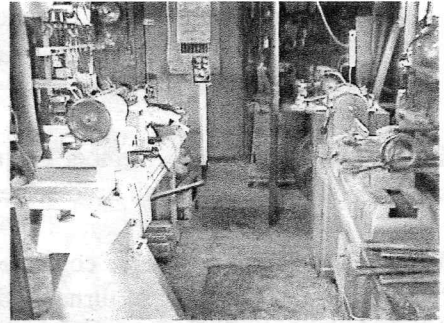
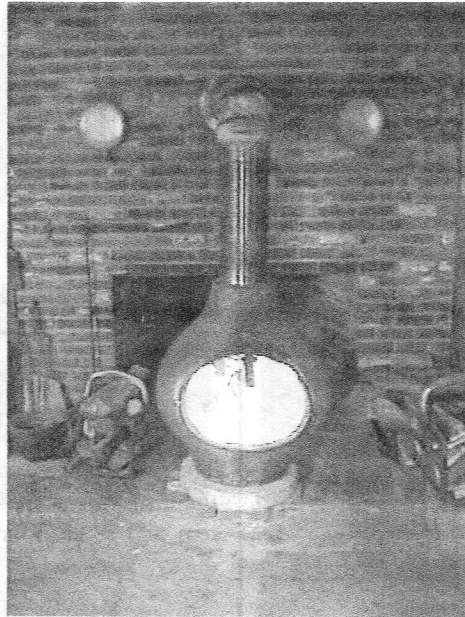
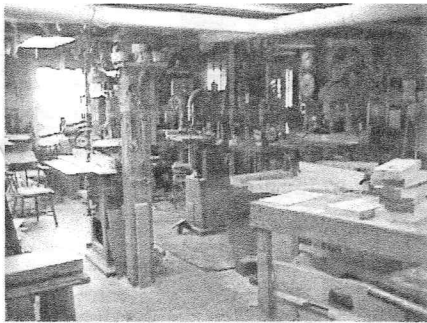

AS THE WOOD TURNS

February 2000



View Outside at Last Meeting - Snow and Rain - But Good Turnout



Members were warm & toasty at Jesse Meyer's shop to select wood for our AAW Collaborative Project

2000 MSSW Officers

President - Hank Cahill (781) 878-0234
Vice President - Felix Troiano (781) 749-1713
Treasurer - Wally Kemp (781) 871-1390
Secretary - Mal Partridge (781) 843-3883
Librarian - John Murphy (781) 834-1179
Newsletter - Mal Partridge (781) 843-3883



Next Meeting

Tuesday, February 22nd, 2000, 7:00 P.M.
At Hank Cahill's *Dust Bowl*
Refreshments by: Paul Marks
Member Challenge: Croquet set (mallet, ball)
Demonstration: Innovations in Turning
Member discussion and demos

Meeting Minutes

The January meeting was called to order at 7:18 at Hank Cahill's Dust Bowl

President's Report

Hank reviewed mail from Air Mate Visitors. The AAW certificate of liability insurance for third party coverage was received and discussed by members.

Our secretary for 1999 was not present. Treasurer **Wally Kemp** reported \$697 in treasury not including the addition of year 2000 dues. No librarian report.

New Business

A motion to elect the following officers for year 2000 was seconded and passed.

President - Hank Cahill
Vice President - Felix Troiano
Treasurer - Wally Kemp
Secretary - Mal Partridge

Hank reported a CNEW member has a Delta lathe (same as ours) for sale with accessories for \$200.

Wally reported that a member contacted him about the Christmas Party grab bag of turned gifts. The member did not attend party because of inexperience in turning. The member evidently didn't realize that participation in the grab bag is voluntary and in any case the turned gifts are well received no matter the level of experience by the turner. Christmas spirit prevails! Hope to see this member next year.

It was agreed that **\$20 dues** must be paid by **March** to continue as a member and receive newsletter and other benefits. Give or send to **Wally Kemp** before then.

Mal received E-Mail about AAW library materials available to chapters at no cost other than postage. See Winter 1998 American Woodturner (Volume 13 No. 4) lower right hand area of page 4. A copy of e-mail will be given to Librarian **John Murphy** for appropriate action.

Mal also showed a large list of woodturning links on the web. Two large boxes in the shop, unopened, contained **Hanks** new computer. Welcome to cyberspace, **Hank!**

Emilio and CNEW President **Bob Iuliano** met with and escorted Warren (Butch) and Pat Titus, AAW Conference Coordinators, around Providence and surrounding area with Providence as a potential site for the Year 2002 AAW Conference. Providence offers excellent convention facilities and would make a great East coast site with many area Woodturning groups available to volunteer their services.

Drawings for fabrication of components for our collaborative project were distributed by **Mal** to 9 members who have volunteered to participate:

Hank Cahill, John Murphy, Wally Kemp, Jeffrey Keller, Richard Friberg, Ernie Grimes, Roger Hill, Emilio Iannuccillo and Mal Partridge

Other members are urged to step forward and join in this interesting and learning experience -

“The Art of Precision Woodturning”

Hank and **Wally** showed some preliminary work they have done preparing for our project. One comment - use dry wood! **Mal** has designed and drawn over 60 detailed drawings to date. Our project will involve developing some innovative turning techniques, adding to our knowledge base.

Show and Tell was held after a refreshment break.



Library



The Library has a good selection of periodicals and books thanks to the donations by members. A self service system will be used for distribution. The following procedures have been set up to keep track of the collection.

The Librarian has been authorized to spend \$25.00 per month for additions to the library. Members are requested to submit their suggestions for new books, magazines and videos.

Check Out

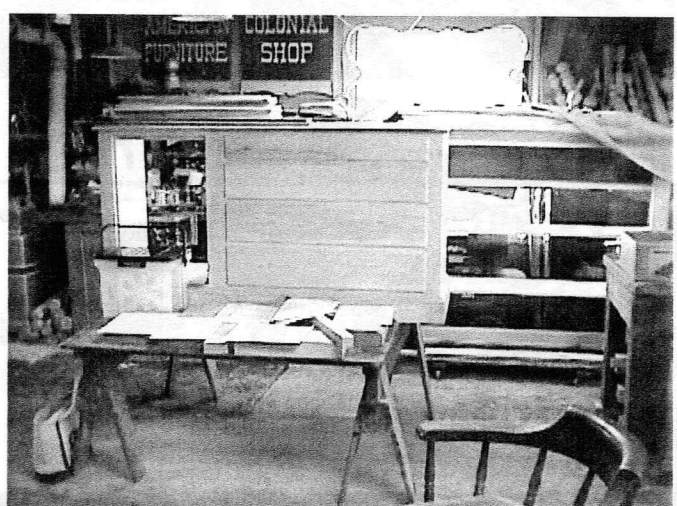
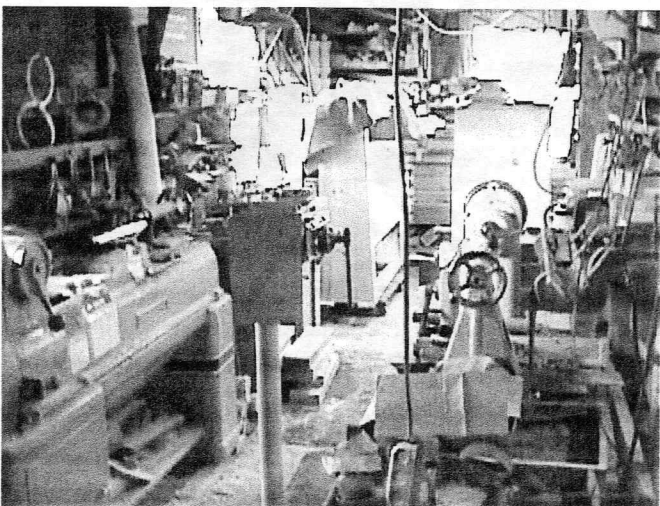
1. Sign and date control card found in book pocket
2. Place card in index box
3. If checking out a video: Give \$2.00 rental fee to **John Murphy** or place money in index box

Return

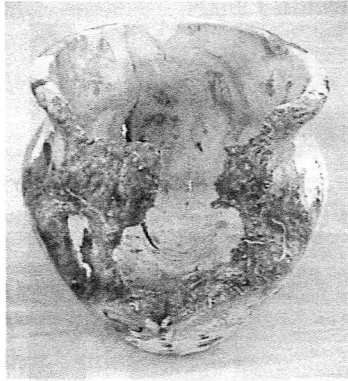
1. Find control card in index box and cross off name
2. Replace card in book pocket

Jesse Meyer's Shop

Designer & Builder of Early American Furniture



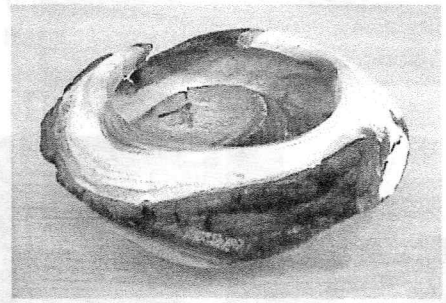
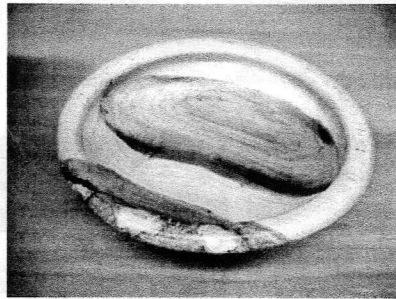
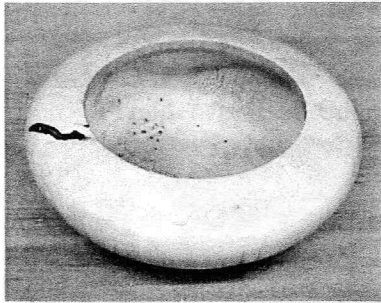
January 2000 Show & Tell



Cherry burl by Steve
"Burl King" Sarro



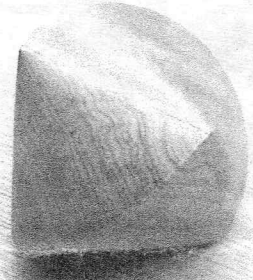
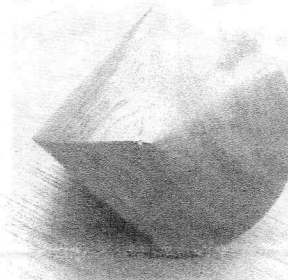
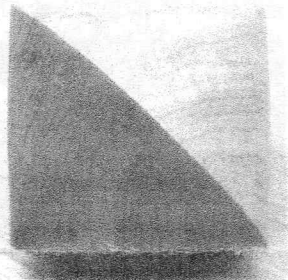
Box by Jeffrey Keller from
Richard Friberg's spalted
maple



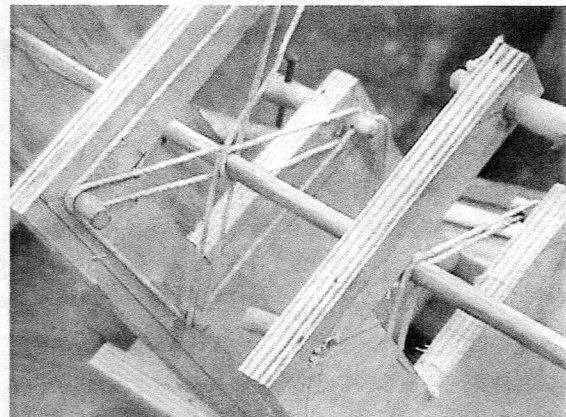
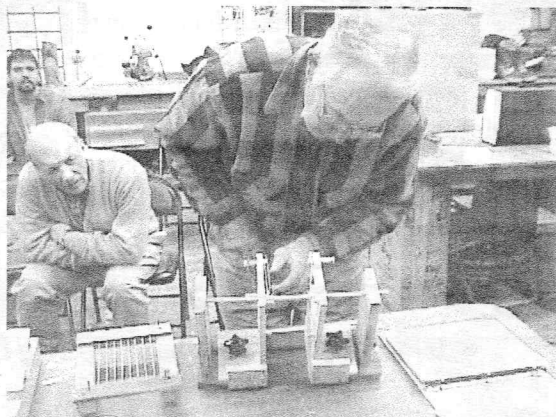
Richard Friberg's curly maple bowls and bowl with integral branch/knot



Steve Sarro's cherry burl



Three views of Emilio Iannuccillo's split and rotated cone from Scientific American



Wally Kemp demonstrates string steady for the turning of small diameter rods to simulate wire leads