

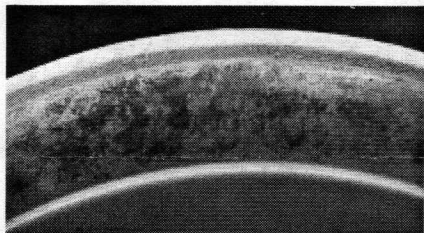
AS THE WOOD TURNS

February 2001

Oh! It Feels So-o-o Good II



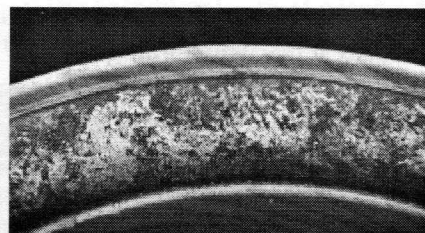
Richard Friberg Demonstrated Bowl Turning & Coloring



The Blues



Inspection time - Great demo Richard!



The Greens

2001 MSSW Officers

President - Hank Cahill (781) 878-0234
Vice President - Felix Troiano (781) 749-1713
Treasurer - Wally Kemp (781) 871-1390
Secretary - Mal Partridge (781) 843-3883
Librarian - John Murphy (781) 834-1179
Newsletter - Mal Partridge (781) 843-3883



Next Meeting

Tuesday, Feb. 27th, 2001
7:00 P.M.

At Hank Cahill's *Dust Bowl*
Refreshments by: Steve Sarro

Member Challenge: Button/s, lg. med. or sm.
Demo: Chain Saw Expertise by Jay Doherty

Meeting Minutes

The January Meeting was called to order at 7:06 pm at Hank Cahill's Dust Bowl

President's Report & General Business

Hank introduced two new members:

Bernard Feinerman and Leonard Langevin

Our AAW insurance policy was received for third party coverage. The Central Coast newsletter from George Paes was made available for member review. Hank reminded members present that dues for 2001 are now due.

Treasurer **Wally Kemp** reported \$798.98 in treasury. Expenses of \$400 for Jacques Vesery demo, \$20 for beverages, (some still available in refrigerator for .50 each), \$20 for chair rental and video production costs to be determined.

No report from Librarian **John Murphy**.

A video tape will be available of the Jacques Vesery demonstration. Check newsletter for details and availability. Habitat for Humanity Bird House display and auction will be held April 27 - 29 at South Shore Plaza.

The Gnome Rotary Engine was displayed at the Woodworking Show in Providence and some of our members demonstrated woodturning along with members from other groups. A small show but great interest shown by attendees at the Woodturning booths.

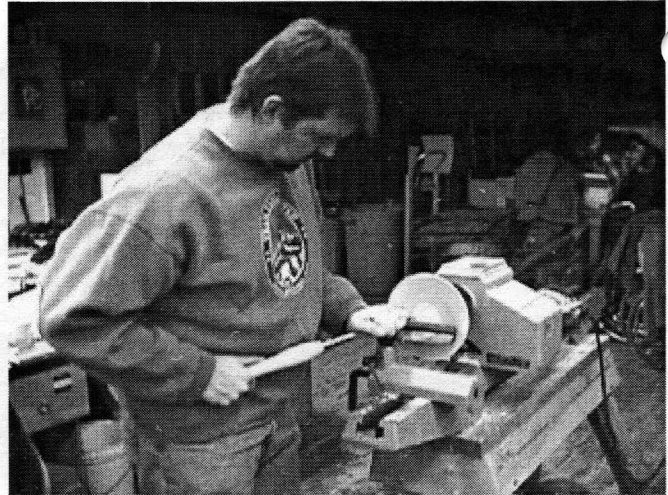
Mal passed out Gnome Engine wallet cards to participating members present per a request from **Wally**. A demo "The Art of Precision Woodturning" is scheduled for May 30th, 9 am, at the Retired Men's Club of Greendale, Inc., at the Greendale YMCA, Worcester. **Mal** will be showing the Gnome Rotary Engine with an overhead slide presentation. This group has a large membership and this is a great opportunity to create interest in woodturning for both MSSW and CNEW.

An audio tape was played of the sound of a Gnome Rotary Engine running. Put-put, roar, put-put, etc. as the magneto switch is toggled to control speed. The sound is available on the following web site:

<http://lincolnbeachey.com/gno.html>

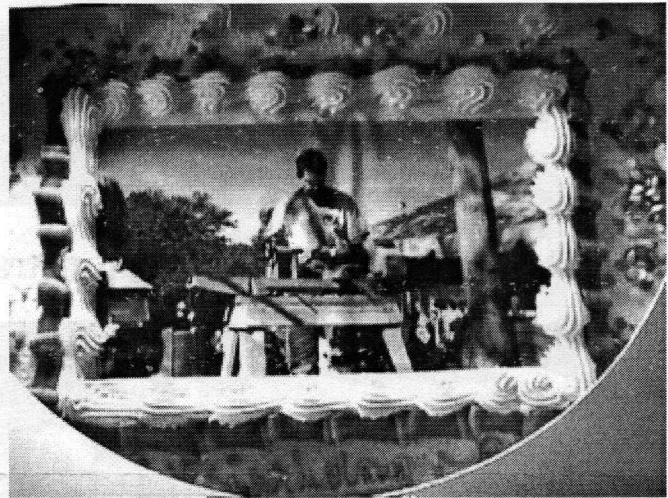
Quick Time is required to play, but is a free download.

The Richard Friberg Demonstration



Richard prepares stock for the bowl that he will use to demonstrate a technique for decorating the raised rim

The cake below was not part of the demonstration but was presented by his mother at his birthday party on January 27th. The edible photograph shows Richard demonstrating at Audubon Farm Day last year.



To make a point, you can't have your cake and eat it too. For members who haven't paid their dues as yet, this may be the last copy of the newsletter you will receive. As of last meeting the following members owe dues: RC, GW, RH, PM, JN, CT, and AV

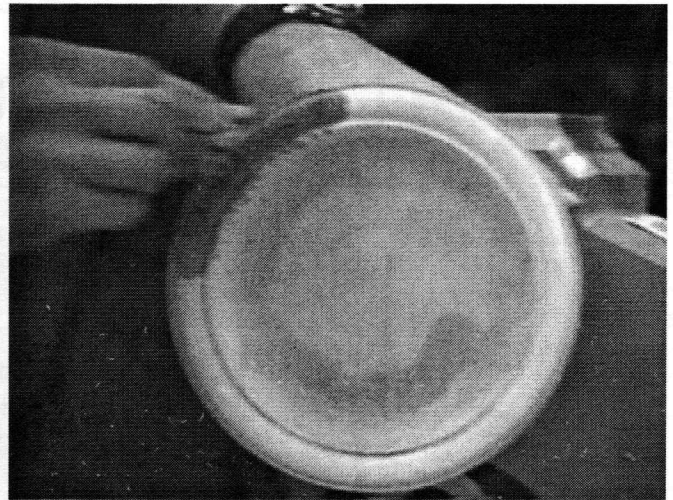
Attention Members

The South Shore Audubon Gift Shop in Marshfield welcomes members to display items for sale on a commission basis of 75/25%

Check with Wally Kemp for information



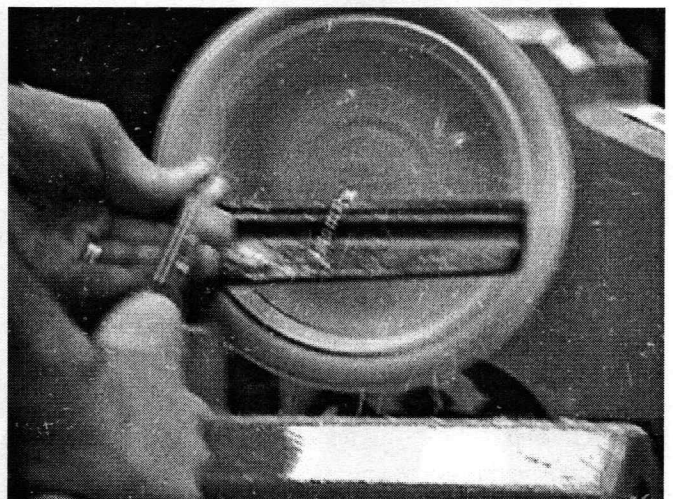
1. Hollowing bowl after shaping rim and finishing bottom so he doesn't have to reverse chuck



4. A wet sea sponge dabbed in another color paint is applied to obtain desired stippled effect



2. Rim and all surfaces are sanded prior to decorative and final finish being applied



5. Wait until dry, or use hair dryer to speed process then turn rim to remove excess paint and detail rim



3. A gloss lacquer coating is applied around rim prior to painting with low cost colored acrylic paint



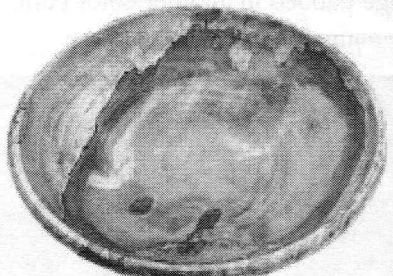
6. Final finish is 2 coats lacquer and wax. Shown is ultramarine blue. Gold stipple makes a nice effect

Show & Tell

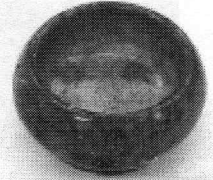
January 2001



Jeff Kellers 4th Pool cue-bloodwood,rosewood,maple burl-gloss spar varnish



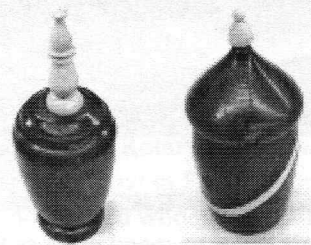
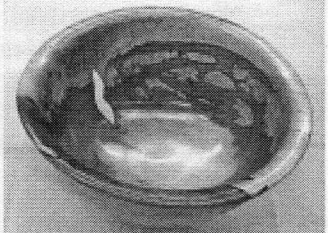
Wally's Wallywood bowl, used hot glue to prevent cracks, turned yellow



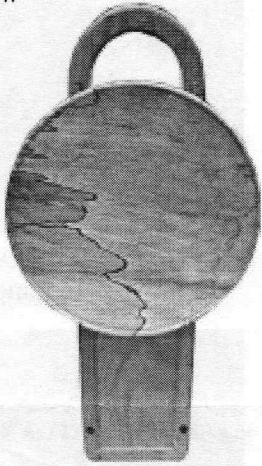
Jeff's cherry burl "good stuff"



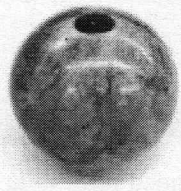
Felix Troiano's Wallywood maple vase and bowl which had cracks that were opened & cleaned up



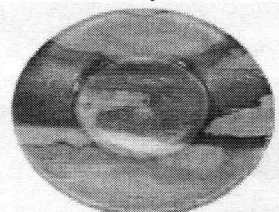
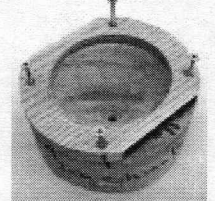
Russian Olive limb and holly boxes by Hank



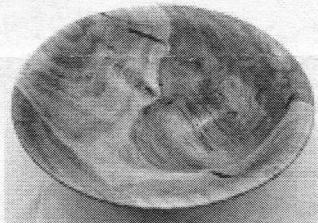
Hank's Friewood plate displayed using a plate hanger



Wally's round burl with jam chuck and clamp required when 3/4" Forstner bit caught and jammed



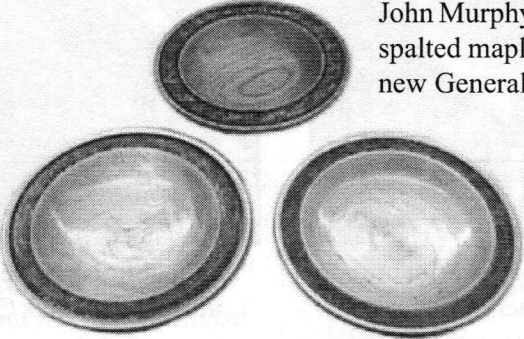
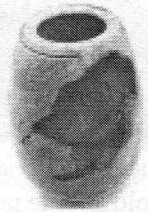
Wallywood maple plate by Hank - 5 coats buffed lacquer



John Murphy's "nice to turn" Wallywood bowl, spalted maple chalice and 1st large bowl turned on new General lathe



Maple burl and curly ash vessels by Rich Friberg



Richard Friberg's Decorated bowls

