

---

# AS THE WOOD TURNS

---

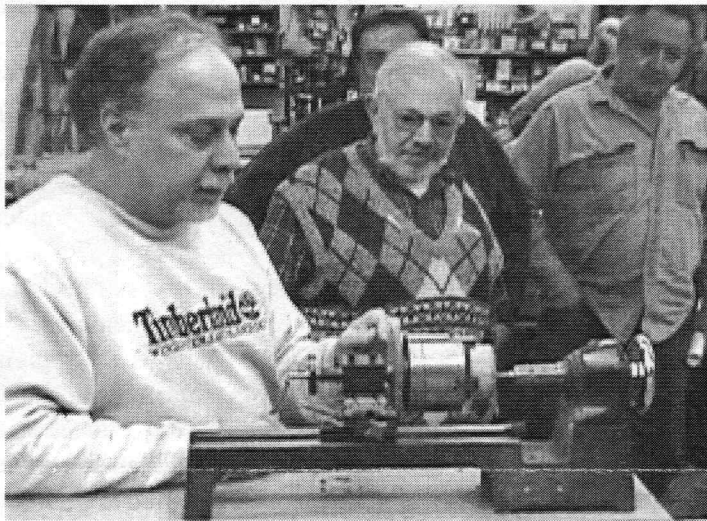
February 2002

---

## Threads

Don't Be Spooled, We're Not Talking  
About Sewing!

Angelo Iafrate demonstrated how to turn a threaded lidded box



Cutting threads in box top using Bonnie Klein fixture

### 2002 MSSW Officers

**President** - Hank Cahill (781) 878-0234  
**Vice President** - Felix Troiano (781) 749-1713  
**Treasurer** - Wally Kemp (781) 871-1390  
**Secretary** - Mal Partridge (781) 843-3883  
**Librarian** - John Murphy (781) 834-1179  
**Newsletter** - Mal Partridge (781) 843-3883



### Next Meeting

Tuesday, February 26th, 2002  
7:00 P.M.

At Hank Cahill's *Dust Bowl*  
Refreshments by: Angelo Iafrate  
Member Challenge: Multi-Axis turning  
Demonstration: TBD

## Meeting Minutes

The meeting was called to order at 7:00 pm at Hank Cahill's Dust Bowl

### President's Report and General Business

**Hank & Janet** introduced guests from North Bennet Street School, **Jean LeGwin**, from Milton and **Chris Ricci** from Pembroke.

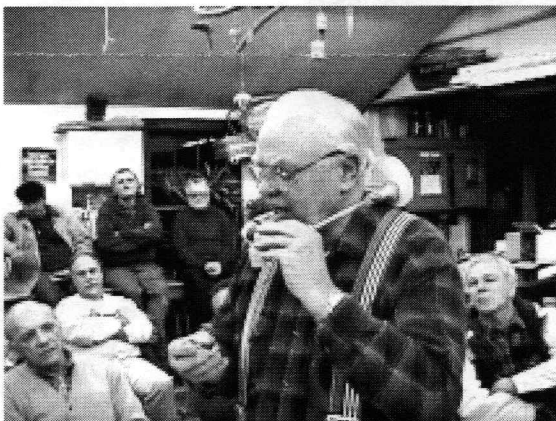
**Hank** suggested we make a donation to CERF which aids woodworkers who have suffered from disasters, as in the case of a CNEW member whose shop burned down. A \$50 donation was approved by members.

AAW 3rd party liability insurance fee of \$75 was also approved by members. Also members were again reminded to join AAW.

**Wally** reported \$724 in treasury before **Mal's** newsletter expenses of \$145.80 for 4 months.

Librarian **John Murphy** reported 2 books out since last July/August and 10 videos out for some time. Please return checked out items in a timely fashion or we will have to charge a penalty. ( \$\$\$ or give a demonstration on what you learned from the *returned* books/videos! )

The Resp-o-Rator dust mask for woodturners was demonstrated by **John Murphy**. ( The inventor visited John last year) It is available from Packard Woodworks for \$49.95.



**Jeff** suggested that the checks received from Audubon exhibit sales be checked for possible errors. **John Murphy** reported he sold 21 pieces.

## Notice

### 2002 Dues Are Due

Please give or send \$20 dues to Wally Kemp to continue as a member and receive our newsletter and other benefits of membership.

**Ernie** and **Bernie** reported on a wood sale ( 15 cents per board ft.) at Wilcox Park, Westerly, RI., to be held on February 9th. **Ernie** also mentioned the upcoming Springfield Woodworking Show.

**Angelo** reported on availability of two lathes for sale in Torrington, CT. A Nova 3000 for \$1000 and a CNC Woodright Lathe for \$2000.

**Wally** supplied information on the Eastern Massachusetts Guild of Woodworkers.

**Janet** said NBSS has a Woodright Pen Lathe, Model 361 with accessories, for sale -"best offer".

**Bernie** informed us that the Brockton Fuller Museum will become a Craft Center.

**Mal** showed preliminary drawings and sketches of our AAW Colaborative Challenge 2002 project. A meeting will be held for members who will be participating in the project when plans are completed.

**Mal** also had copies of his lathe toolholder article available for new members. He received a call from Butch and Pat Titus about giving a presentation at the 2002 Symposium at Rhode Island.

**Wally** showed a Planetor bit w/shank for end grain drilling. He has tried to get information on availability, but they are no longer being manufactured by Rule in Gloucester, MA. **Editors Note:** An E-Mail from **Angelo** says W.L.Fuller, Warwick, RI. may have a new SIMILSR drill bit that may be interchangeable.

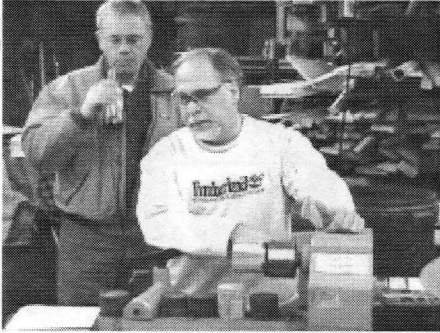
The member raffle was won by guest **Jean LeGwin**.

### Welcome New Members

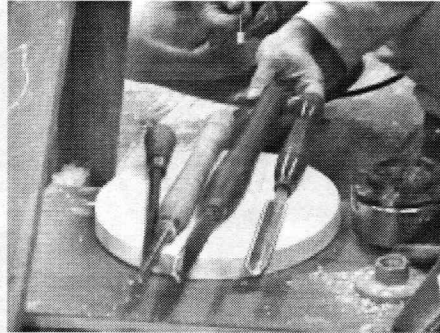
Ken Lindgren from Norwood  
Bob Iuliano from North Providence



# Angelo's Demonstration



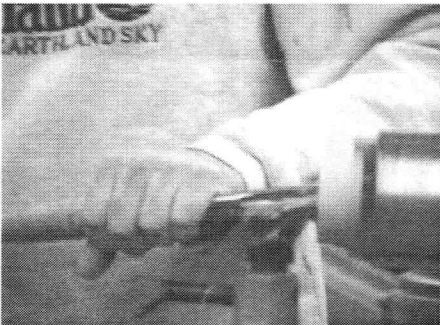
Angelo mounts blank in Axminster chuck to rough turn O.D.



Tools used: Small gouge or scraper, parting tool and roughing gouge



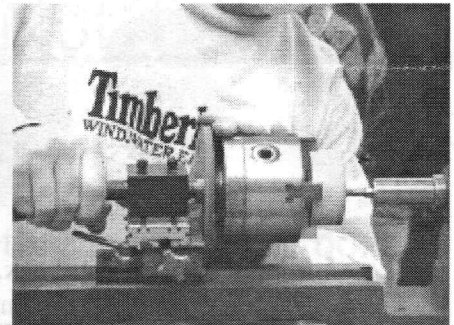
Parting the top off the body and marking top "T" and bottom "B"



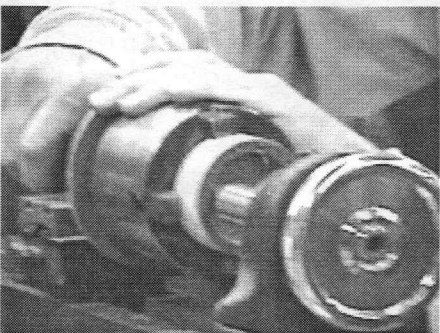
Chuck top, turn out interior, true rim, turn 1/16"x1/16" rabbet, chamfer



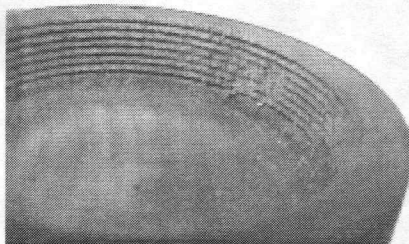
Flood thread area with super glue, sand-seal inside. Mount on threading jig



Move top so cutter just touches the inside surface of lid, move back



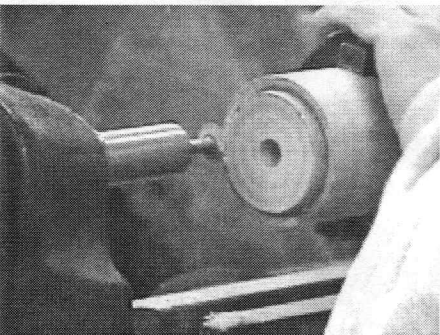
Move cutter into wood by .035-.040  
Feed to cut threads then back off



Threads cut in top - note some chip out caused by gremlins



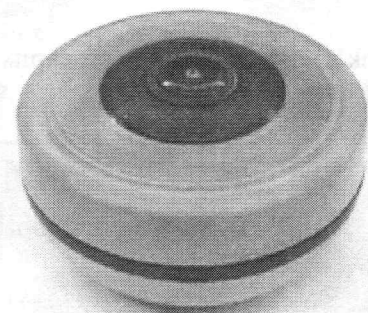
Prepare body, size shoulder 1/16" larger than inside of lid, hollow



Adjust cutter and cut threads, stop the cutter before shoulder to avoid damage, back off and remove body



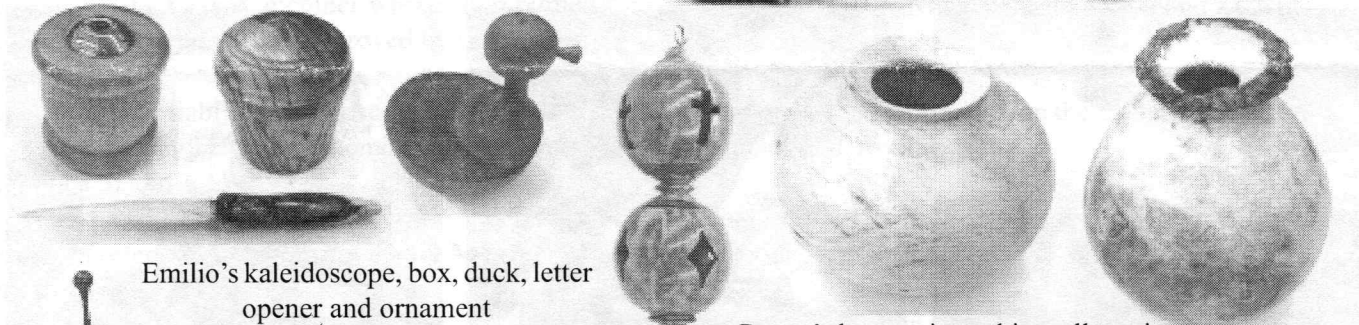
Thread on the lid (Good luck)  
True up top and body and turn to final shape



No this is not the finished piece, but a Bonnie Klein lidded box Angelo showed as an example

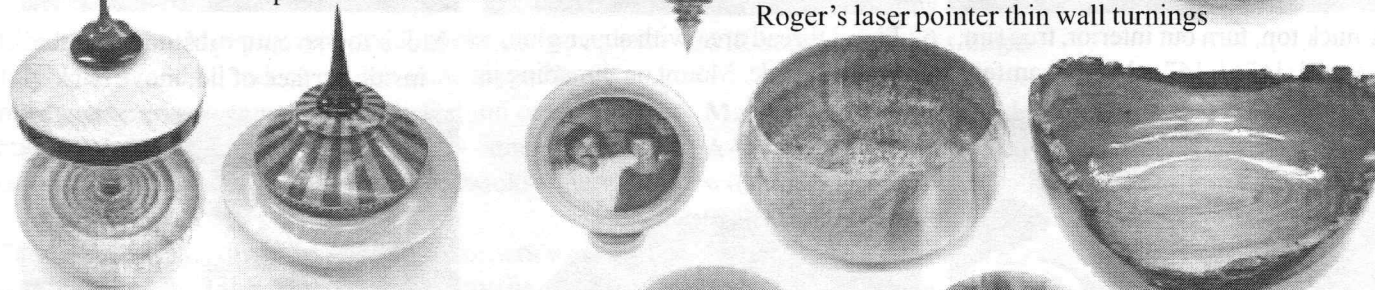
Detailed instructions, prepared by Angelo, were available at the meeting.

# Show & Tell January 2002



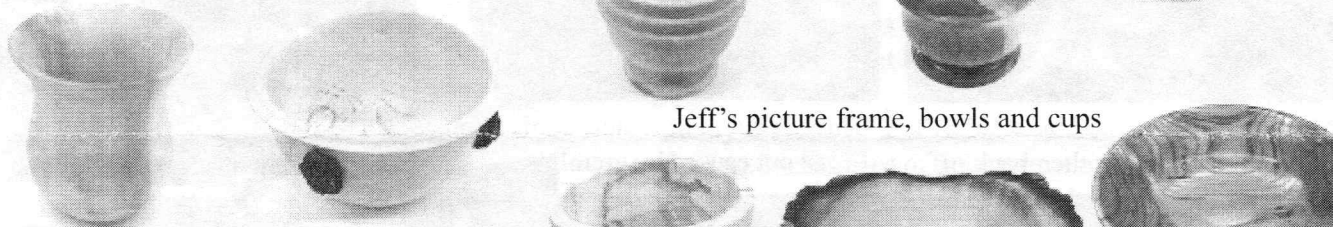
Emilio's kaleidoscope, box, duck, letter opener and ornament

Roger's laser pointer thin wall turnings

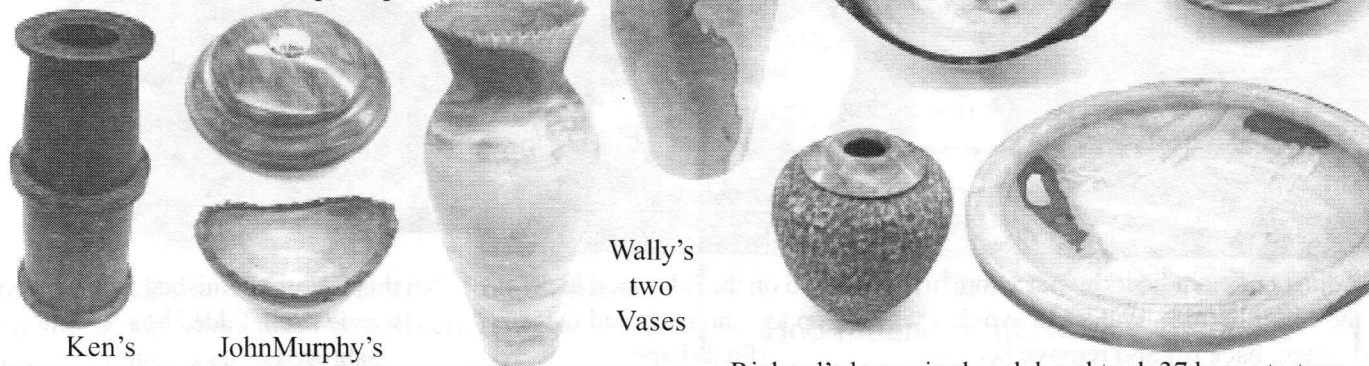


Leonard Langvin's "space ships"

Jeff's picture frame, bowls and cups



Hank's vase and bowl w/peachpits



Ken's separator model

JohnMurphy's creations

Wally's two Vases

Richard's large ripple ash bowl took 37 hours to turn