
AS THE WOOD TURNS

February 2006

Wickedly Wild and Wonderful Wood

Our Fuller Craft Museum Exhibit Opened to Large Crowds



2006 MSSW Officers

President - Hank Cahill (781) 878-0234
Vice President - Richard Friberg (508) 378-2436
Treasurer - Wally Kemp (781) 871-1390
Secretary - Mal Partridge (781) 843-3883
Librarian - Leonard Mandeville (508-586-7679)
Newsletter - Mal Partridge (781) 843-3883
Web site: <http://www.mssw.sitelinker.org/>



Next Meeting

Tuesday, February 28th, 2006, 7:00 P.M.
At Hank Cahill's *Dust Bowl*
Refreshments by: Sarah Alessandro
Member Challenge: Turning for S&T
Demonstration: Richard Friberg -
Producing the Barley Twist

President's Report and General Business

The Fifth New England Woodturning Symposium will be held May 13 - 8:30 AM - 5:00 PM at Pinkerton Academy, Derry, NH. Registration fee \$50/with lunch.

Treasurer Wally Kemp reported \$1414 in treasury. Dues are now due. Audubon Farm Day is September 30th and Wally will sign us up for a \$35 fee to demo and sell.

Lenny the Librarian reported 4 videos missing - not signed out. A new book has been added "Turn a Bowl" by Ernie Conover.

Mal and Ken reported on our pending exhibit and events at Fuller Craft Museum. Our Gnome Engine will be on display.

Jeff said we received our AAW \$500 grant check.

Wally will demonstrate February 5th at the Duxbury Library. (It was a great success - 50 people present with 4 interested in joining our group. Ken & Barbara Stevens, and Bob Allen helped control the crowd.)

The party for AAW President Angelo Iafrate was attended by 40 members of area woodturning clubs.

Ken reported that the South Shore Art Center Festival will be held June 16-18 on Cohasset Common. Our booth will cost \$285/ \$15 per person exhibiting. Sales usually are in the \$2000-\$3000 range. See Ken if you want to participate.

Also Ken is exhibiting in the Dillon Gallery at South Shore Art Center. A Gallery Talk will be held Sunday, March 5, 3pm.

The Liberty Tree turnings are now on display at our exhibit at Fuller Craft Museum at the request of the Brockton Historical Society.

The Patriot Ledger had an interesting article "Retired surgeon still works with his hands" about Wally Kemp. Copies will be available at meeting.

Welcome New Members

Peter Milner from Milton

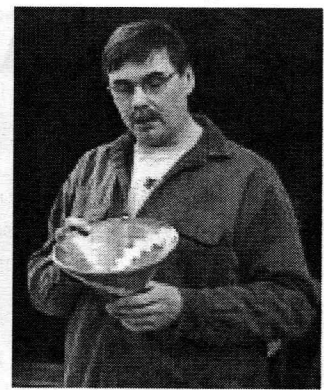
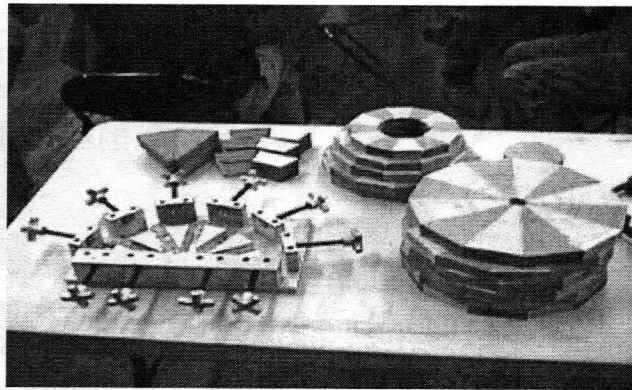
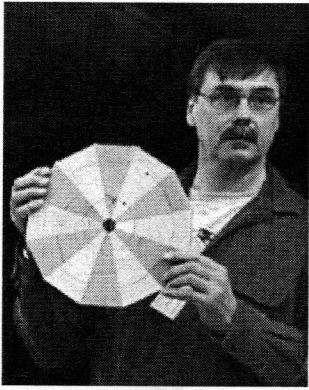
Dorothy Egan from Braintree

The Chainsaw Gang turned out for the Alden Street, Duxbury maple tree cutting!

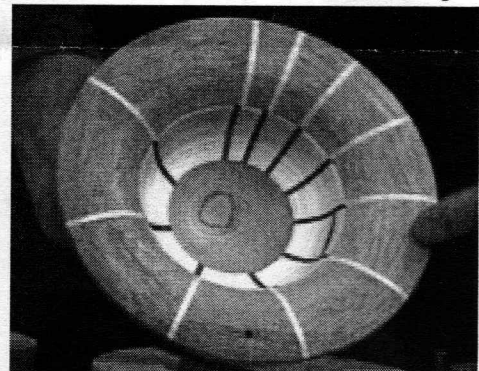
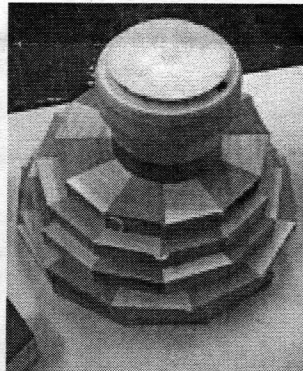


There were plenty of cold burls

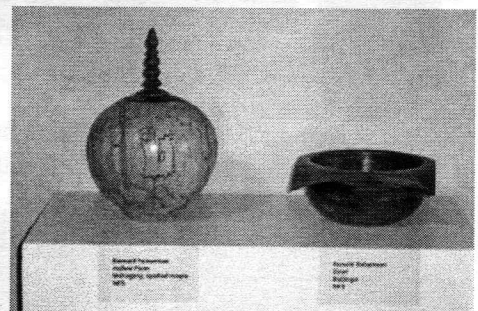
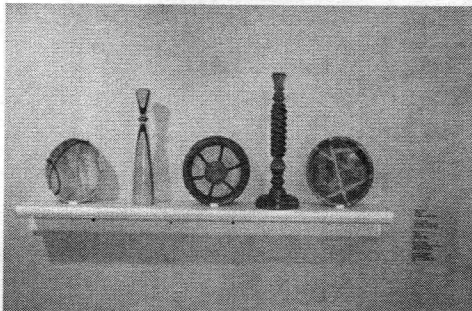
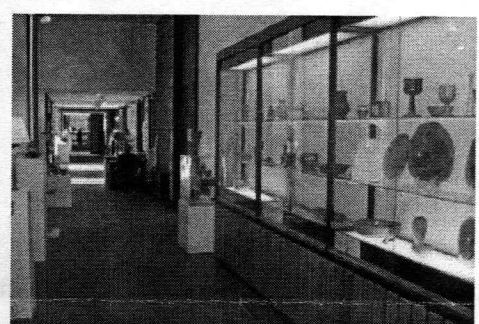
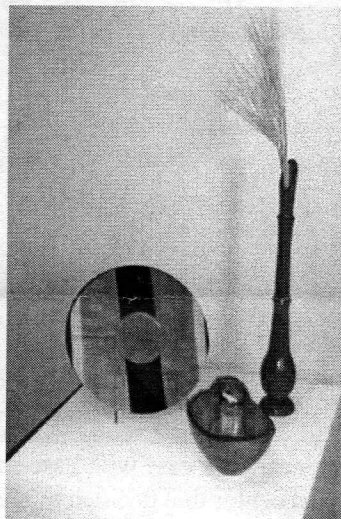
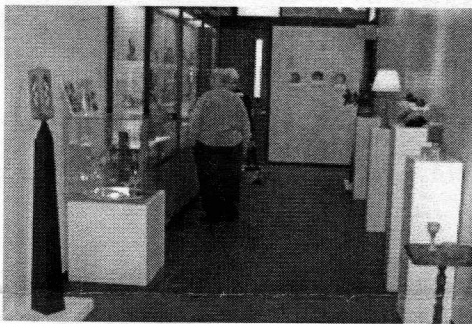
Nigel Howe Demonstrated His Method of Segmental Turning



Nigel draws cross sectional drawings of designs that come to him while driving - making notes on his Palm Pilot! Uses a digital angle finder and radial arm saw to cut segments - drum sander to flatten. Clamps pieces in aluminum jig using Gorilla glue wetting one side. A plywood base is used to glue up layers. He waits a week before turning.



Our Fuller Craft Museum Exhibit

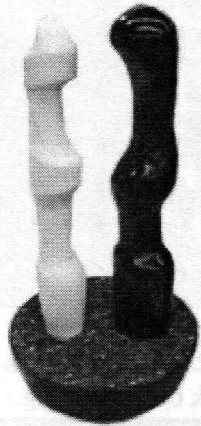


Shown are just a few of our turnings beautifully displayed by the museum staff. Our thanks to them for a great exhibit.

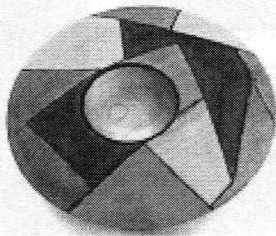
The exhibit is on display until April 2, 2006. You don't want to miss it! Bring the family, invite your friends.

Show & Tell

January 2006



Ken's B&W figures standing in coffee grounds



Andy Osborne's multi colored piece



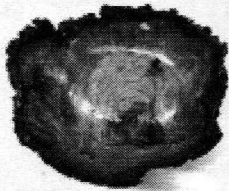
John Murphy's Cherry box



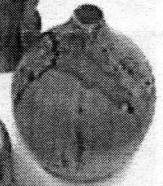
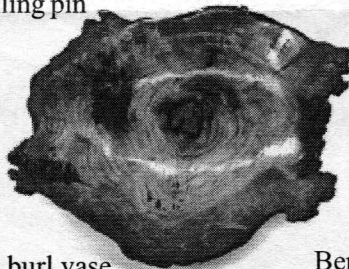
Harol Dyke's 131 piece segmented turning



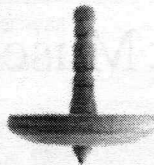
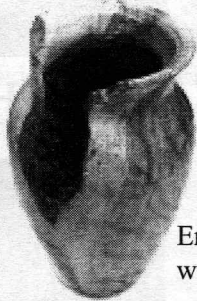
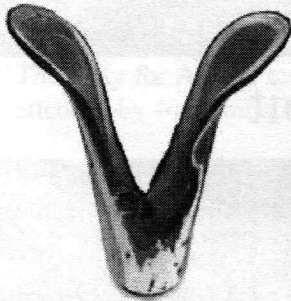
Nigel's French style rolling pin



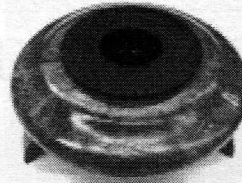
Wally's 3 Cherry burls, Yew crotch and White Pine burl vase



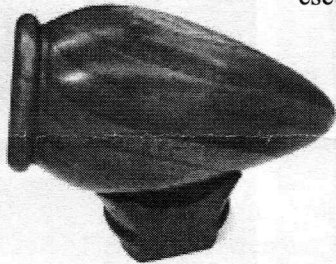
Ben Natale's spalted Maple & Birch pieces and Hickory box



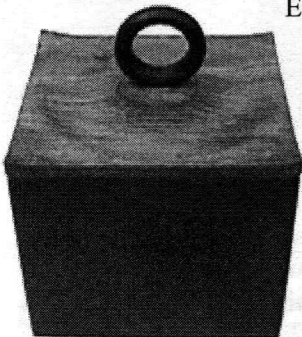
Ernie's Baltic Birch top with dowel spindle and escutcheon pin tip



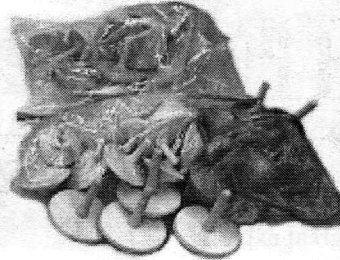
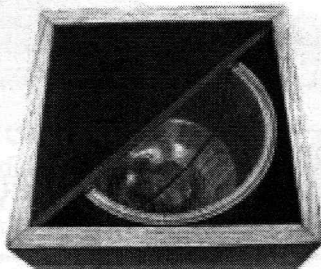
Jeff's Cherry piece, Maple bowl and Cherry and Birdseye Maple Pool cues below



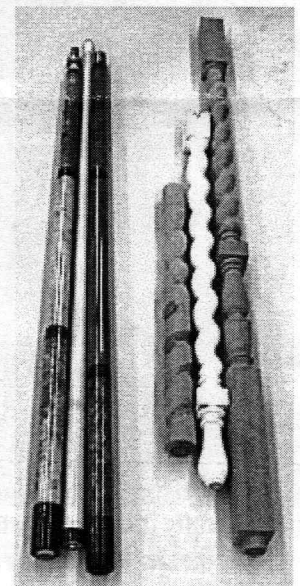
Emilio's Santa box, Jacaranda vase with base and last years gift plate with burl center that decided to break free!



Bob Sutter's magic box with mirror partition and half bowl that looks whole inside



Bags of tops for Fuller Museum SENSEation Day kid's to color



Richard Friberg's barley twist ballisters