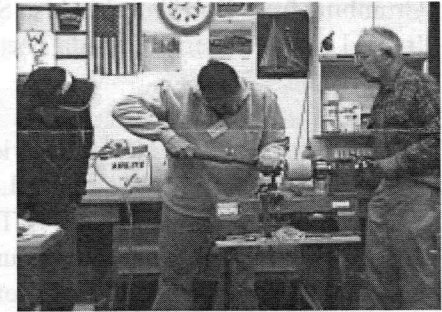
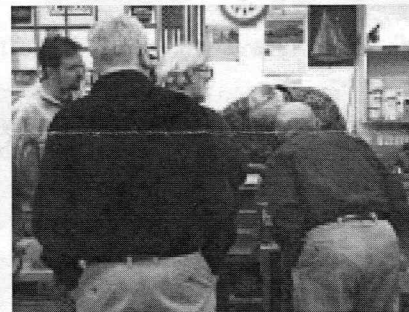
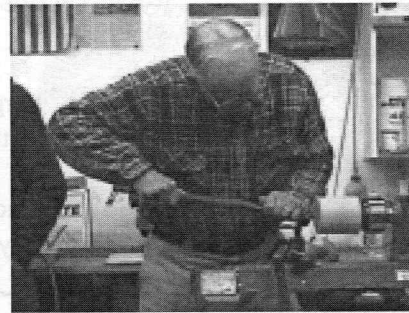
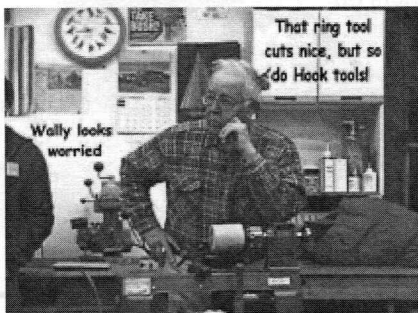
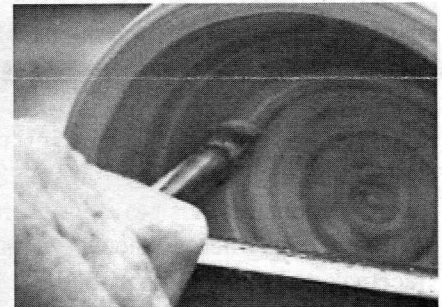
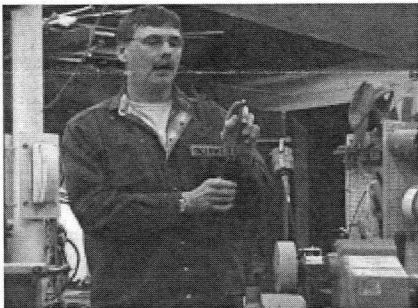


AS THE WOOD TURNS

February 2007 Issue 117

Getting your Hooks into End Grain with the Ring Tool

Nigel and Wally demonstrated the use of the ring and hook tools for turning end grain.



2007 MSSW Officers

President - Hank Cahill (781) 878-0234
Vice President - Richard Friberg (508) 378-2436
Treasurer - Wally Kemp (781) 871-1390
Secretary - Mal Partridge (781) 843-3883
Librarian - Leonard Mandeville (508-586-7679)
Newsletter - Mal Partridge (781) 843-3883
Web site: <http://www.mssw.sitelinker.org/>



Next Meeting

Tuesday, February 27, 2007, 7:00 P.M.
At Hank Cahill's *Dust Bowl*
Refreshments by: Mal Partridge
Member Challenge: Bracelet
Demonstration: Don Diedrich
What it Means to be Golden

Meeting Minutes

The meeting was called to order at 7:00 pm at Hank Cahill's Dust Bowl

Guest Pete Lauricella from Whitman was introduced and has become a member.

Hank received correspondence from AAW requesting all members join. Hank has applications for joining. The \$25 dues includes the American Woodturner Magazine. Members authorized \$75 contribution for AAW insurance. Four pen kits from Steebar Corp were raffled.

Mal presented Hank a color copy of the January Newsletter which featured his house and our Christmas party held there. Hank and his daughters were given a rousing hand by members for their hospitality.

Wally reported \$664, plus dues just received, in our treasury. He reported Farm Day is September 29th. He also mentioned his visit to a symposium at Colonial Williamsburg where in the Cobblers shop he spotted a lacemakers lamp he had made in the corner. Evidently they were also called cobblers lamps!

Ken mentioned the South Shore Art Festival to be held June 15-17 in Cohasset. The booth fee is \$275. Selling turnings will contribute \$25 toward booth fee.

Lenny the Librarian reported donations to the library: VCR's - "Art of Paddle Turning" from Bill Dooley and "Airbrushing" from Hank. DVD's - "Turned Bowls Made Easy" and "Beyond The Basic Bowl" by Bill Grumbine from Bob Trucchi. Also Sid asked for a Beth Ireland video "Turning Outside The Box". Lenny was authorized to purchase.

Lenny also reported the following videos missing. If you have any of these please return to Lenny.

#2 Turned Boxes by Ray Key, #11 Turning Wood by John Jordan #35 Woodturning a Foundation Course by Keith Rowley #36 Techniques, Coloring, Chatterwork, and Boxes by Bonnie Klein #37 Woodturners, Signatures in Wood by 3 turners #41 Basic Off Center Turning by Chris Stott

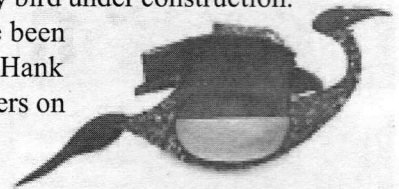
Jeff accepted orders for golf and T shirts with embroidered MSSW logo from members.

Liberty Tree Wood - Overheard at UPS "Some old guy in Abington has the wood" Hank (the old guy) brought two bowls for her.

Andy gave a Yankee Woodturning Symposium report and requested Mal send a MSSW membership list to Norm Mancuso for sending Symposium information to members. We will be able to register on their web site soon. \$135 for Symposium - After May 1, \$150 and \$175 at show. The Marriot will have rooms for \$95/night and Dorm rooms will be available for \$55. The Banquet will cost \$40. They expect 80% attendance from local woodturning groups. Top notch turners will be demonstrating. See their web site for details which can be accessed from our site.

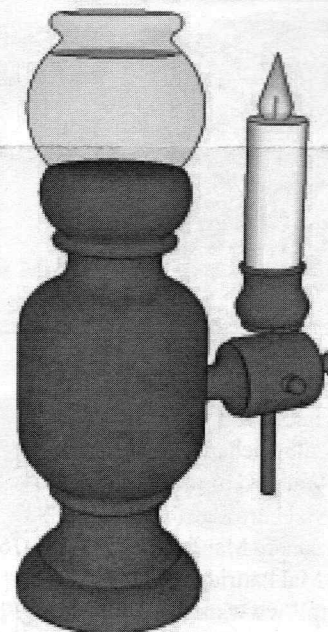
The Association of Revolutionary Woodturners and Rockler will be hosting a Robert Sorby demonstration February 25th between 1 pm and 4 pm at the Middlesex Community College, 590 Springs Road, Bedford, MA. For reservations call (617)497-1136 or E-mail store4@rockler.com

Ken had Magnolia tree nuts for members to decorate as eggs for our Brolly bird under construction. Coffee grounds have been used for texture and Hank will be carving feathers on wing tops.



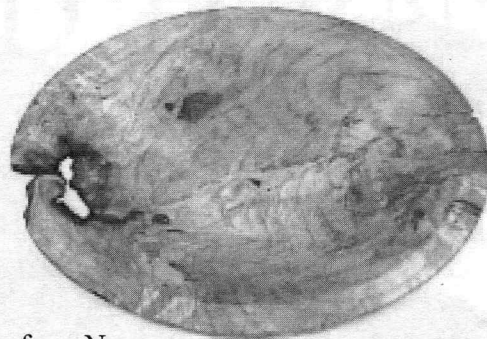
Richard Friberg is building his Timberframe shop and is now teaching turning at North Bennet Street School.

David Rice had photos of the chainsaw gang cutting Wally's Cherry wood.

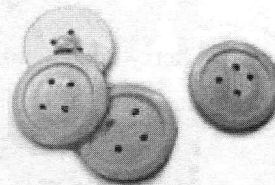
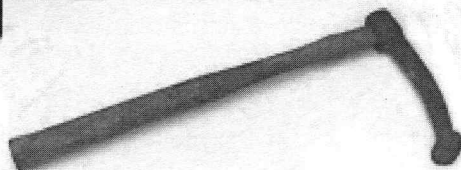
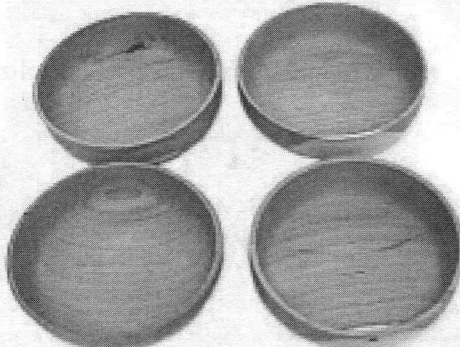
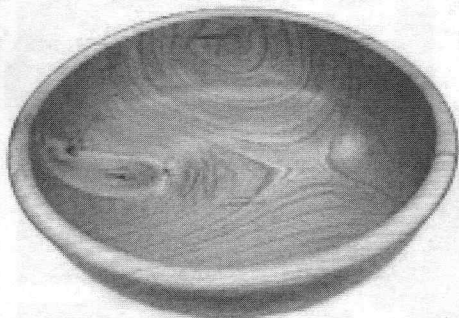
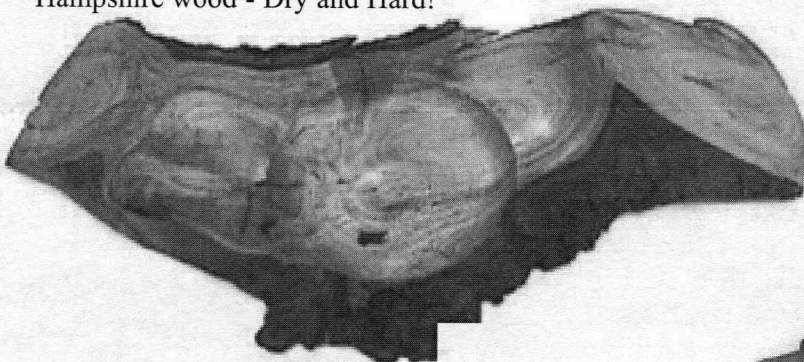
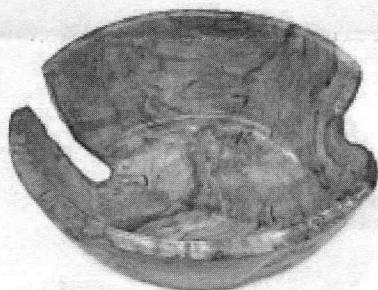


3D Lacemakers Lamp Drawn by Mal with Sketchup

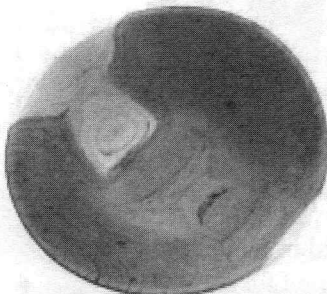
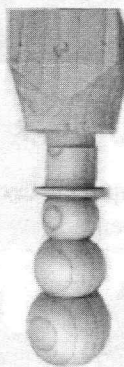
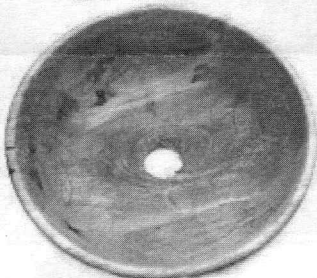
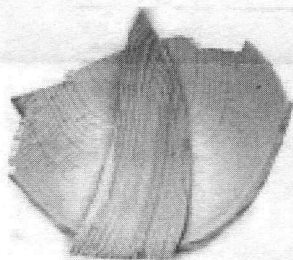
More Show & Tell



Hank's Maple burl pieces from New Hampshire wood - Dry and Hard!

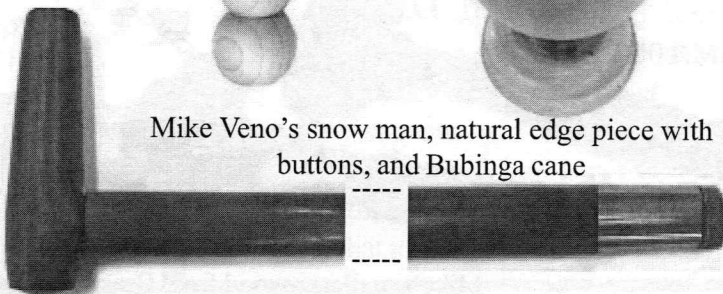


Jeff's bowls from Wally's Cherry wood, buttons and Pexto mystery tool "body hammer"



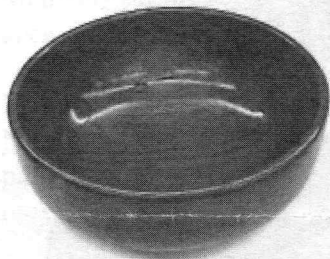
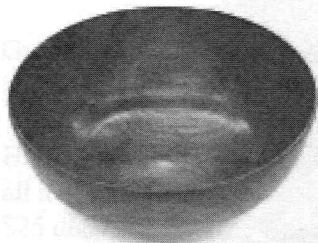
Bob Trucchi's bowls: "Pieces", "Funnel" and \$12 White Ebony wood from eBay

Mike Veno's snow man, natural edge piece with buttons, and Bubinga cane

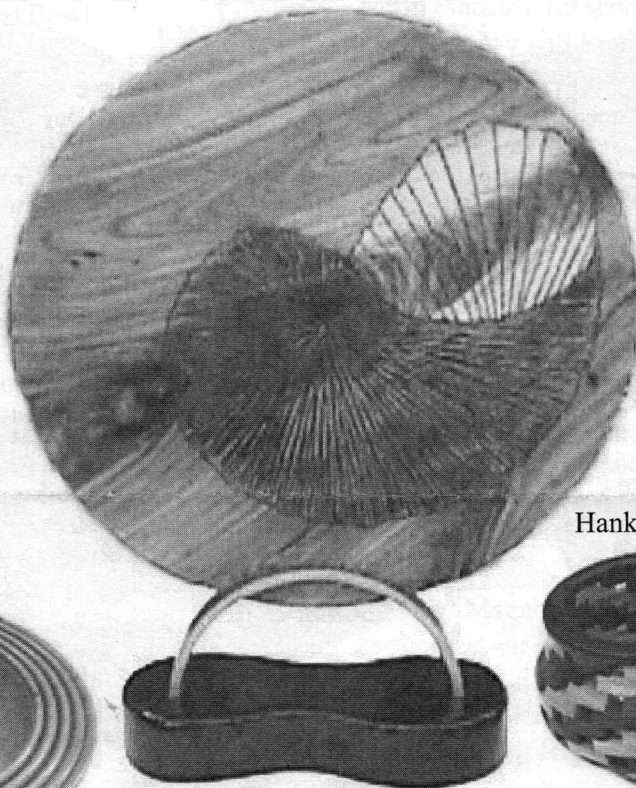


Show & Tell

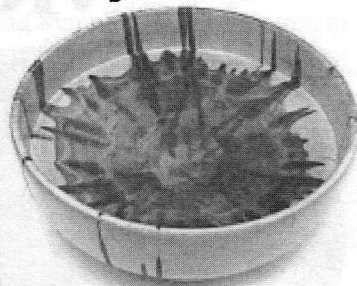
January 2007



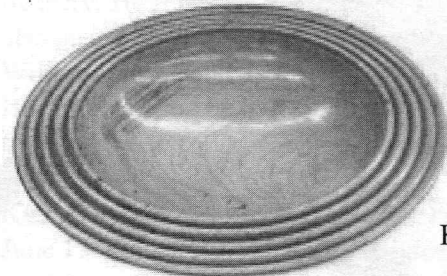
Paul O'Neill's Walnut bowls



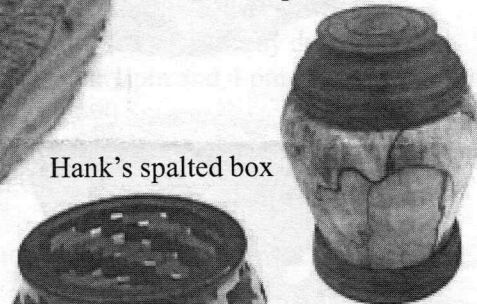
Ken's 23" dia. Elm Art piece "Fossilized"



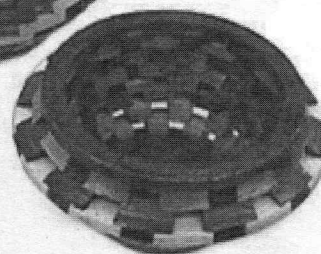
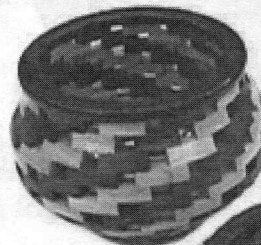
Bill Dooley's Black Heart Maple bowl



Andy's Cherry beaded edge bowl



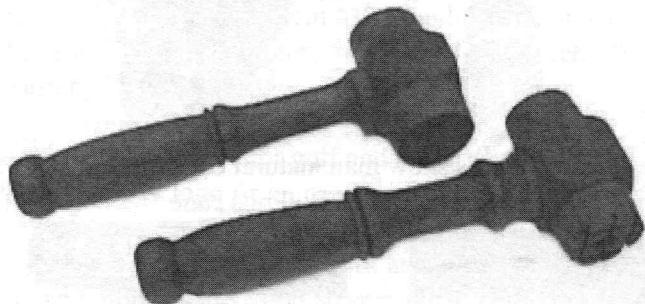
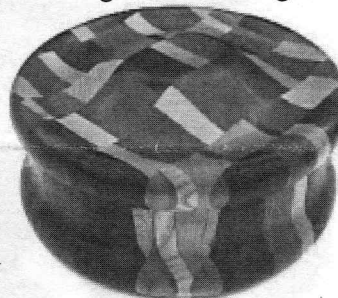
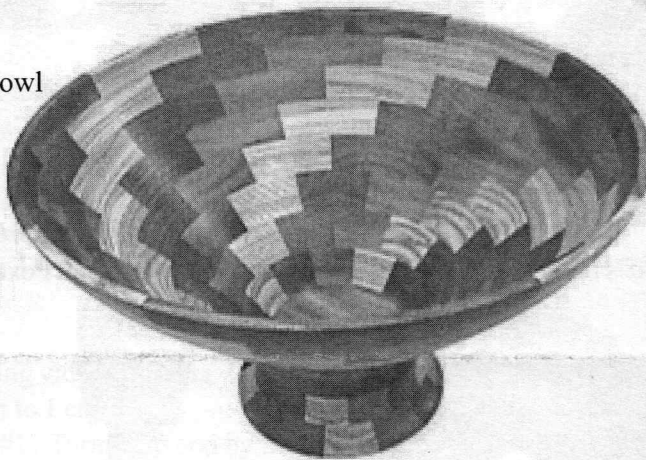
Hank's spalted box



Pete Lauricella's open segmented turnings



Nigel's Maple burl bowl, 18" dia. Ash, Walnut & Mahogany segmented bowl and segmented box from scraps



Mike's mallets - wood from Brazil



Don's chess pieces designed in Sketchup with 3/4" ball bearings inserted for weight