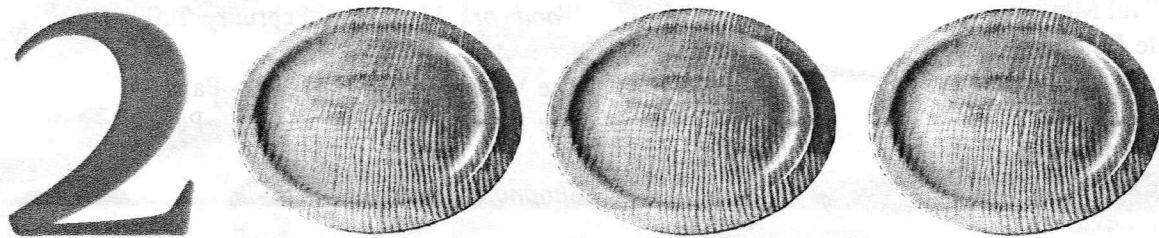

AS THE WOOD TURNS

January 2000



~~We Made It!~~
Turned

Welcome to the New Millennium - 1

MSSW's New Years Resolution is to encourage timid and new woodturners to speak up and seek help from our resource of turners willing to explain the unexplainable!

Our 3rd. annual **Christmas Party** was held on the 21st. of December at Hank Cahill's Dust Bowl (less dust!!). It was a festive occasion shared with six members of Upper Plymouth County Woodcarvers, our spouses and friends. There was plenty of good food and pleasant conversation. Gifts were pulled from the grab bag box and opened with accompanying oohs and aahs.

Hank was more than pleased with the **turnout** and wishes everyone a healthy and fulfilling new year, as do the MSSW officers. We look forward to a very productive year with more of our members becoming involved with turning and learning. The AAW Chapter Collaborative Challenge will be a major effort by some of our members - it would be great if each and every member could contribute.

1999 MSSW Officers

(Year 2000 Officer volunteers step forward)

President - Hank Cahill (781) 878-0234

Vice President - Felix Troiano (781) 749-1713

Treasurer - Wally Kemp (781) 871-1390

Secretary - Charles Rosen (781) 848-6589

Librarian - John Murphy (781) 834-1179

Newsletter - Mal Partridge (781) 843-3883



Next Meeting

Tuesday, January 25th, 2000

7:00 P.M.

At Hank Cahill's *Dust Bowl*

Refreshments by: Emilio Iannuccillo

Member Challenge: Twine Holder

Demonstration: TBD

New Gallery Artist

Member **Jack Nash** has a Gallery Exhibit at the South Shore Art Center, 119 Ripley Road, Cohasset, MA.
Gallery hours: Mon-Sat 10-4, Sun 12-4 Congratulations!

Year 2000 Refreshment List

January - Emilio Iannuccillo
February - Paul Marks
March - Pete Baxter
April - Charles Rosen
May - Ernie Grimes
June - Ray Cartier
July - Frank Jones
August - Bill Levin
September - Donald Nelson
October - Chris Tsiropoulos
November - Al Vandam
December - All members - Christmas Party Goodies

Year 2000 Officers

Volunteers welcome - Get your name on the front of the MSSW Newsletter! You don't need to report income received as there isn't any, only the satisfaction of serving as an officer of a great woodturning group. If you can't serve, why not help our President in arranging demonstrations or put on a demo yourself.

AAW Chapter Collaborative Challenge 2000

Eight members have volunteered to participate in our project. A meeting of volunteers will be held at **Jesse Meyers** shop, Wednesday, January 19th at 1pm, to select stock and assign components for fabrication. Those who can not attend can pick up drawings at the next MSSW meeting.

Editor's Note:

Our newsletter can be made available to members in Acrobat .pdf format for viewing on your computer in living color. Your turnings look great on screen and you can print them out in color if desired. Let's discuss it at the next meeting if you are interested.

Articles of Interest to Woodturners

Fine Woodworking Magazine, February 2000:

Center finding jig for bandsaw - Page 18
Miniature wooden mountain bike 10 1/2" high - Page 30
Note to Wally: Check out size of wooden spokes.
A wax primer - Page 46 & shopmade stains - Page 129

Woodwork Magazine, February 2000:

The Work of Betty Scarpino - Page 24
The Art of Fan Carving Birds - Page 44

Shopnotes, Number 49:

Lathe Mounted Disk Sander - Page 6

American Woodworker Magazine, February 2000:

Turning Baseball Bats - Page 12
Puny Tunes Miniature Flutes - Page 17
This references the "whistles" we made recently.
The web site is most interesting - includes a Puny Tune Museum, Hear a Puny Tune, Automatic Puny Tune player machine, many projects by Bryan Mumford - "Crackpot inventor" including clocks and Micro CNC machines.

Web site: www.bmumford.com

Mini Lathe Review - Page 68
Turning Plates - Page 98

Important Reminder

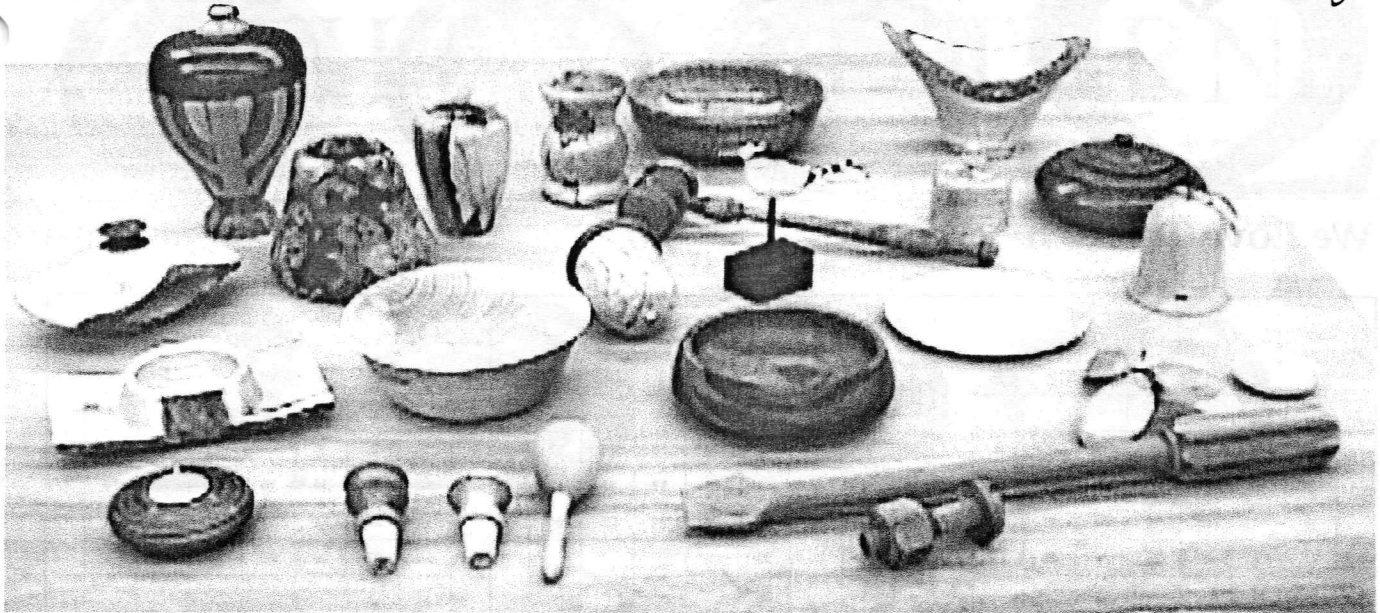
MSSW year 2000 membership dues are to be given or sent to treasurer **Wally Kemp**. Our dues are still only \$20 per year and includes the newsletter and all other benefits of our group. Checks should be made payable to MSSW.

Wally Kemp, Treasurer MSSW
688 Main Street
Hanover, MA 02339

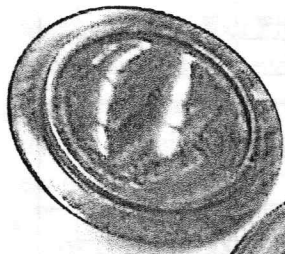
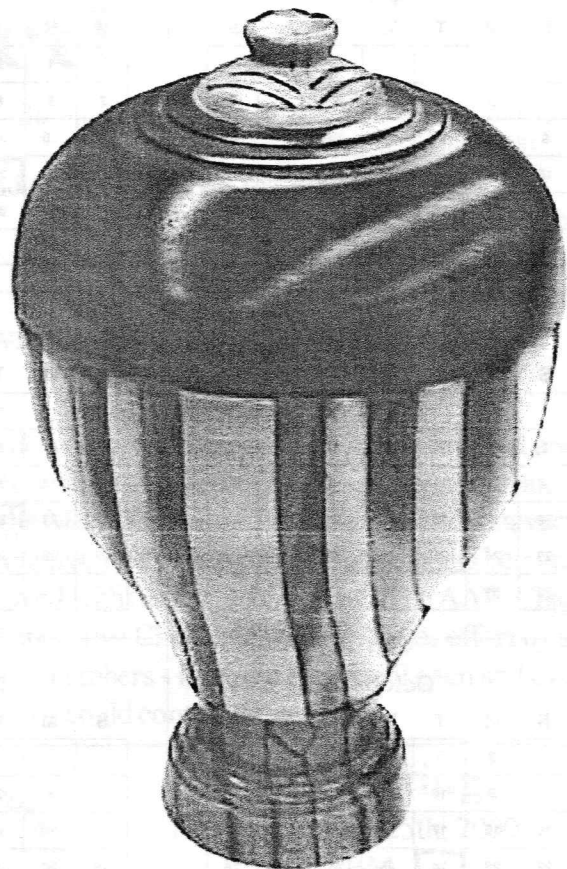
Now is the time to also join or renew your AAW membership. If you have joined AAW recently please notify **Mal** so he can update our membership list.

\$20 Well Invested

'99 Christmas Gifts and Show But Don't Tell Gallery

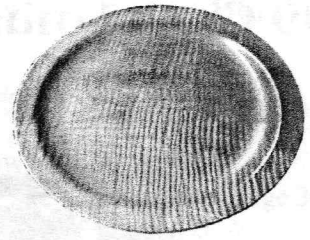
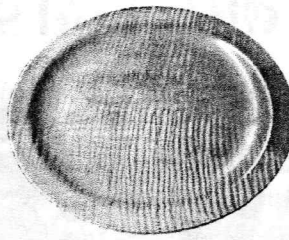
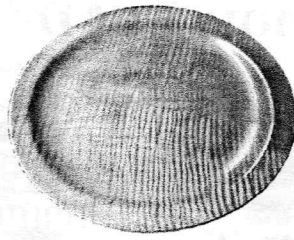
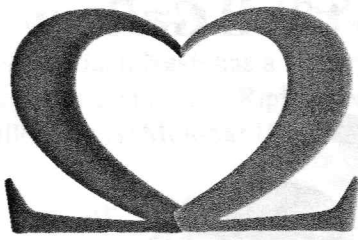


One of John Murphy's
Beautiful Boxes Shown
Closed Above and Open
Below - Note Rim Undercut



It Pleases The
Senses!

Is This The Balloon That Attempted To Fly Around
Hank's Dust Bowl?



We Love To Turn

January						
S	M	T	W	T	F	S
						1
2	3	4	5	6	7	8
9	10	11	12	13	14	15
16	17	18	19	20	21	22
23	24	25	26	27	28	29
30	31					

February						
S	M	T	W	T	F	S
		1	2	3	4	5
6	7	8	9	10	11	12
13	14	15	16	17	18	19
20	21	22	23	24	25	26
27	28	29				

March						
S	M	T	W	T	F	S
			1	2	3	4
5	6	7	8	9	10	11
12	13	14	15	16	17	18
19	20	21	22	23	24	25
26	27	28	29	30	31	

April						
S	M	T	W	T	F	S
						1
2	3	4	5	6	7	8
9	10	11	12	13	14	15
16	17	18	19	20	21	22
23	24	25	26	27	28	29
30						

May						
S	M	T	W	T	F	S
	1	2	3	4	5	6
7	8	9	10	11	12	13
14	15	16	17	18	19	20
21	22	23	24	25	26	27
28	29	30	31			

June						
S	M	T	W	T	F	S
				1	2	3
4	5	6	7	8	9	10
11	12	13	14	15	16	17
18	19	20	21	22	23	24
25	26	27	28	29	30	

July						
S	M	T	W	T	F	S
						1
2	3	4	5	6	7	8
9	10	11	12	13	14	15
16	17	18	19	20	21	22
23	24	25	26	27	28	29
30	31					

August						
S	M	T	W	T	F	S
		1	2	3	4	5
6	7	8	9	10	11	12
13	14	15	16	17	18	19
20	21	22	23	24	25	26
27	28	29	30	31		

September						
S	M	T	W	T	F	S
					1	2
3	4	5	6	7	8	9
10	11	12	13	14	15	16
17	18	19	20	21	22	23
24	25	26	27	28	29	30

October						
S	M	T	W	T	F	S
1	2	3	4	5	6	7
8	9	10	11	12	13	14
15	16	17	18	19	20	21
22	23	24	25	26	27	28
29	30	31				

November						
S	M	T	W	T	F	S
			1	2	3	4
5	6	7	8	9	10	11
12	13	14	15	16	17	18
19	20	21	22	23	24	25
26	27	28	29	30		

December							
S	M	T	W	T	F	S	
					1	2	
3	4	5	6	7	8	9	
10	11	12	13	14	15	16	
17	18	19	20	21	22	23	
24	25	26	27	28	29	30	
31	Tentative Date						

Massachusetts South Shore Woodturners