
AS THE WOOD TURNS

January 2019 - Issue number 250

Hands On planned at Hank's Dust Bowl : xxxxx from 9:00 am until noon

We invite beginning turners to a learning opportunity at the Hands On for one on one instruction. Spindle or bowl turning techniques will be covered. Please reserve your lathe with Tim Rix, or Pablo Gazmuri @ pgazmuri@comcast.net

Here are two photos of some white oak flooring available free to members from Dave Rice. They are sections of 3 foot by 4" wide tongue and groove flooring. He has 22 pieces. First come first served or he will bring it to the next meeting.



Dave's email is dergas5@aol.com.

Minutes of the December 18 Club Party

2019 dues are now due. They are \$50. You can pay online by credit card or by sending a check or cash.

We will be demonstrating February 8th (Friday) at Rockler's store in Porter Square, Cambridge. They will supply the wood. Michael Veno said he was interested in participating.

Demo Day will be held April 20th, 2019. We need volunteer turners. Let Steve know if you are interested.

Steve said that we will be meeting with the Arnold Arboretum on December 12th. They will have wood for us. Show up there in Jamaica Plain if you want some. Also the Arboretum is looking for a donation. The club voted to give them \$75.00 this year.

MSSW Officers

President- Steve Wiseman
(508)-285-9394 stevwsmn@aol.com
Vice president Len Langevin
(508)-789-4211 lennysminiatures@gmail.com
Treasurer John Duggan
(508)-583-7930 john.duggan06@comcast.net
Secretary Kevin Mulligan

Librarian Lenny Mandeville
(508)-586-7679 manleo@comcast.net
Webmaster Tim Rix
(617)-259-5618 rix.tim@gmail.com



Tuesday January 22, 2018

- at Hank's dust bowl at 409 Washington St., Abington, MA at 7 pm

Refreshments - by David Rice

Demo - Steve will turn a bowl

Sale - tools, wood and accessories from Sid for sale to members.

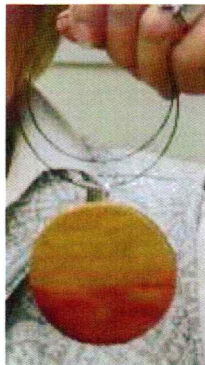
Steve has secured Sid's stuff consisting of some tools, accessories and a lot of wood to dispose of at the meeting. Sid still has his Shopsmith for sale with a Joiner and it's fully equipped -Best Offer

Sid and his wife Minnah are moving (February 2nd.) to Alta Easterly Apartments in Walpole.

Steve has been receiving radiation treatments for three weeks now for his Prostate cancer. It goes 45 days altogether. He expects to be more tired as the treatments progress.

Wally contacted COPD from dust from using his lathe. He was in South Shore Hospital and then a nursing home but is home now

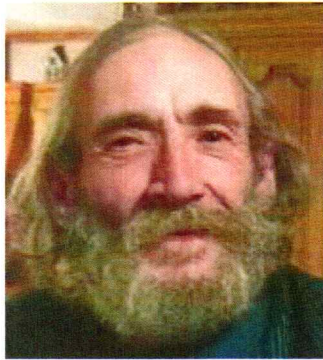
Table with all of the gift items made by members on display.



Ava shows off a necklace from Dusty of Box Elder



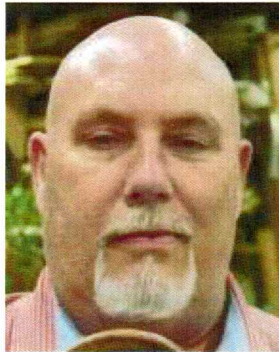
Dusty is holding two lidded boxes turned by Ian



Ian holds a shallow bowl turned by Paul O'Neil (who was absent but was delivered by ken Whiting)



Ken has a Cedar bowl he drew for Paul O'Neil turned by John Bagnell



John is holding coaster with an embedded club logo turned by Dave Burns



Dave holds a lidded box with an Ebony finial turned by Charlie McCarthy



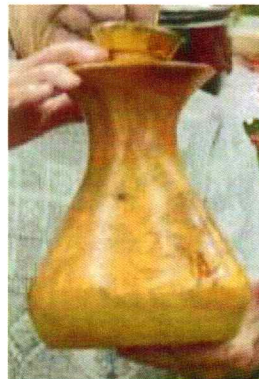
Charlie is holding a pen turned by Ava



Fred has a spalted Maple platter / shallow bowl combo turned by Kevin Mulligan



Kevin holds a natural edge bowl turned by Ben Natale.



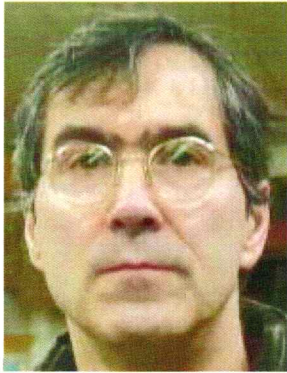
Ben has a spalted Maple lidded vase turned by Bill Dooley



Bill has a Maple bowl turned by
Richard Godmintz



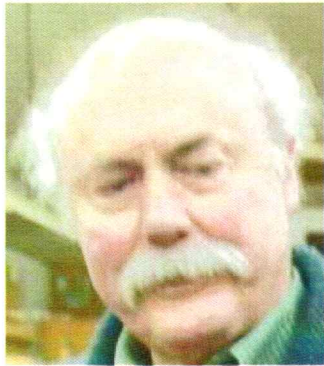
Richard has a hanging ornament with a
suspended Holly leaf and berries turned
by Lenny Langevin



Mike holds a lidded box of Yew with an antler
"knob" turned by Jeff



Lenny holds a hanging flower arrangement
turned and created by Michael Veno



Jeff has a small bird house ornament turned by John Shooshan



John shows us a Santa Claus ornament turned by Fred Johnson



Joe Centrino holds a lidded box turned by Steve Wiseman



Steve has a small bowl turned by Ken Lindgren



Ken has a ribbed lidded box honey bowl and dipper turned by Joe



Lenny Mandeville drew his own Santa abstract as his was the last object in the box.

Hands – on January 12

Hands On had a large turnout of both new and established turners.



Tim demonstrates cutting covers and rounds on a spindle.



Peter Soltz on the lathe, Billy Martin examines some wood and Ron Reynolds is in the rear.

Charlie McCarthy has a discussion with Joe Centrino



Phil Vaughan observes Peter Soltz on the lathe



Another shot of Peter and Ron



Lenny Mandeville and Billy Martin in the front with Wayne Miller on the right.



(l-r) Wayne Miller, Ken Whiting and Richard Godmintz discuss a turning



Bob Courchesne works on a small bowl



Peter Soltz works on his turning



Tim talks about the different uses of woodturning tools to some interested attendees

Upcoming Events

We will be demonstrating February 8th (Friday) at Rockler's store in Porter Square, Cambridge.

Demo Day will be held April 20th, 2019.

AAW Information for New Wood Turners

The American Association of Woodturners maintains a site for those interested in learning about woodturning. It has lots of free information about getting started in woodturning. While we recommend that everyone interested in woodturning join the AAW, there is lots of free information for beginning and seasoned turners alike available in the Discover Woodturning pages.

<http://www.woodturner.org/?page=DiscoverWTHome>

Items For sale at the Club store : – contact Ron Reynolds at reynoldsrn@comcast.net

JSP respirators spare parts (batteries, tear off shields, filters, pre-filters, and replacement face shield) available in the store

MSSWT MEMBER STORE

GLUES:		PRICE
	2 OZ. CA	4.50
	2 OZ. RUBBERIZED	6.00
	8 OZ. CA	13.00
	16 OZ. CA	23.00
	THICK, MEDIUM, THIN: SAME PRICE	
	2 OZ. ACCELERATOR (spray bottle)	3.50
	8 OZ. ACCEL. REFILL	5.75
	2 OZ. DEBONDER	3.25
	4 OZ. EPOXY	6.00
	2 OZ. REPLACEMENT CAPS	0.50
	LONG NOZZLES	0.75
	2 OZ. EMPTY BOTTLES	0.75
ANCHORSEAL:		
	LARGE (approx. 1 gallon)	16.00
	MEDIUM (approx. 1/2 gallon)	9.00
	SMALL (approx. 1 quart)	5.00
SANDING DISKS:		
	2"	3.50
	3"	4.50
	2" or 3" Replacement H&L Disk	0.50
	2" HOLDER	10.50
	3" HOLDER	12.50
	2" BLUE HOLDER	14.50
	3" BLUE HOLDER	16.50
	1/2" SOFT INTERFACE PAD EXTENSION	5.50
	3" HANDY SANDER (Palm Sander)	8.50
	SANDING TACO	4.50
	2 or 3" HAND HELD HOLDER (Kidney Shape)	12.00
CLOTHING:		
	CAPS	15.00
	TEE SHIRTS	16.00
	2X TEE SHIRT	18.00
	POLO SHIRT	27.00
	2 X POLO SHIRT	29.00
MISCELLANEOUS:		
	3" Lambswool Buff	9.00