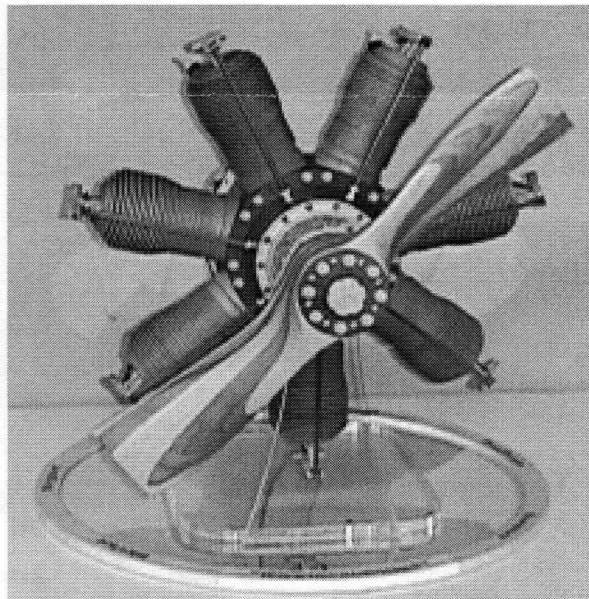

AS THE WOOD TURNS

July 2000

When You Hit a Homerun 3rd is Closest to Home -
And We Hit a Homerun!



Our AAW Chapter Collaborative Challenge 2000 Placed 3rd at the AAW Symposium, Charlotte, NC

The 50 HP Gnome Rotary Engine Circa 1909 received much acclaim from those members at the convention who appreciated a collaborative entry that was Ivory Pure - 99 44/100% wood and was free of gimmicks and animation. After all we are an Association of Woodturners. We congratulate the Glendale Woodturning Guild, Glendale, CA for their 1902 American LaFrance Steam Fire Engine which placed 1st, and the Woodturners of North Texas, Fort Worth, TX for their 2nd Place entry "Around The World In 80 Turns".

And to the 22 other excellent Chapter Collaboration Challenges, well done!

2000 MSSW Officers

President - Hank Cahill (781) 878-0234
Vice President - Felix Troiano (781) 749-1713
Treasurer - Wally Kemp (781) 871-1390
Secretary - Mal Partridge (781) 843-3883
Librarian - John Murphy (781) 834-1179
Newsletter - Mal Partridge (781) 843-3883



Next Meeting

Tuesday, July 25th, 2000
7:00 P.M.

At Hank Cahill's *Dust Bowl*
Refreshments by: Chris Tsioropoulos
Member Challenge: Plumb Bob
Demonstration: TBD

Meeting Minutes

The June meeting was called to order at 7:10 at Hank Cahill's Dust Bowl

General Report

Hank announced that this would be a short meeting as he and other members were leaving right after the meeting for the trip to Charlotte, NC for the AAW Symposium 2000.

Treasurer **Wally Kemp** reported approximately \$900 in treasury after **Mal** submitted Newsletter and project expenses for last six months.

Librarian **John Murphy** reported two books still out since April. They are now overdue.

Mal reported that 1000 copies of the special edition newsletter were printed for distribution at the AAW Symposium as requested by Hank. The cost was \$155.40 which included a 20% discount from Kinko's.

The Gnome Rotary Engine project is completed and ready to head for Charlotte. **Mal** is driving down and will take it with him.

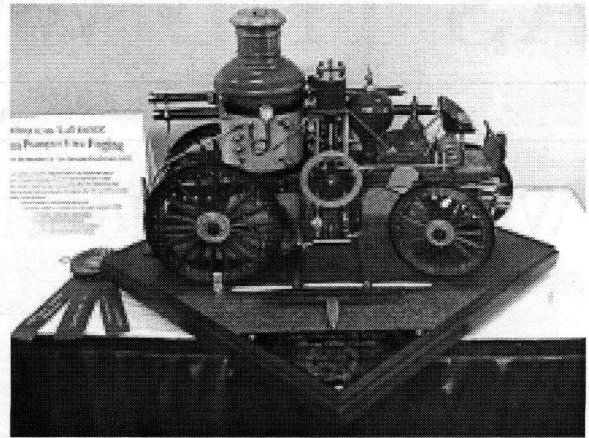
A call was received by **Mal** from Angela Daughty from Woodshop News. They want to do a story on the Gnome project after seeing our June newsletter.

Wally Kemp reported that he has 16 ft of hard maple tree logs 40" diameter (some spalted) ready to be cut for turning. **Wally** also showed a low cost holder, purchased from Lee Valley Tools, for holding pieces when routing to prevent possible finger damage.

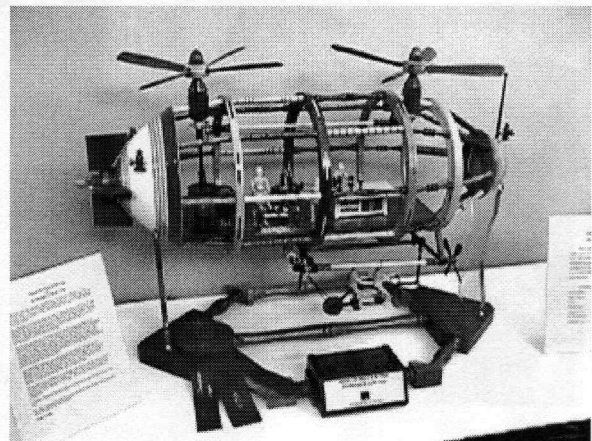
Wally also explained in detail how he eliminated chip out when turning his parting tool ornaments. He glued the four blocks over whole area using hyde glue and heavy craft bag paper between the pieces. The glue was dissolved with vinegar after turning. The results were much better. He said he still is having trouble getting slots at right angle to stock. **Mal** suggested taping a plastic right angle triangle to the tool and line it up with tool rest set parallel to work.

A Show & Tell and wood swap closed out the meeting, and we "hit the road to Charlotte"!

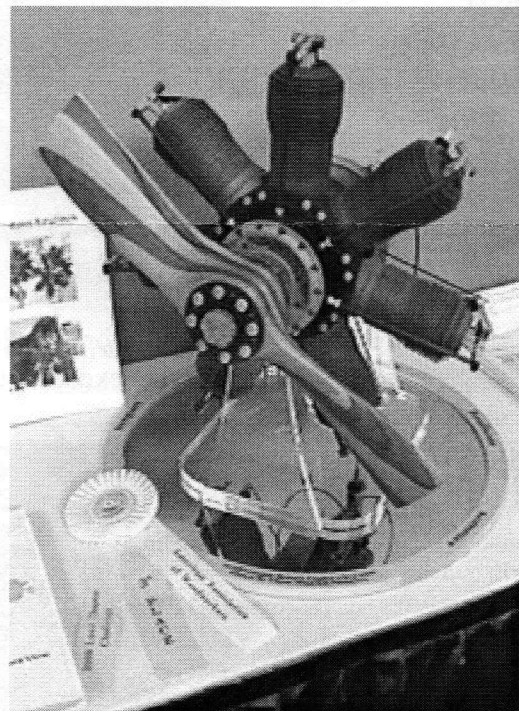
AAW Chapter Collaborative Challenge 2000 Winners



1st Place

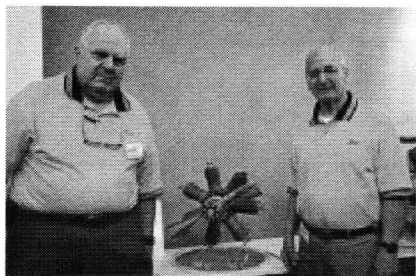


2nd Place



3rd Place

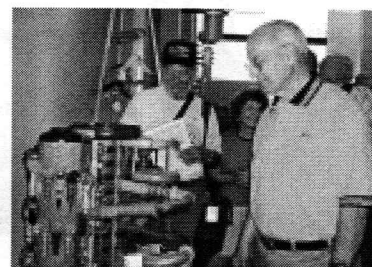
AAW 14th Annual Symposium 2000, Charlotte, NC



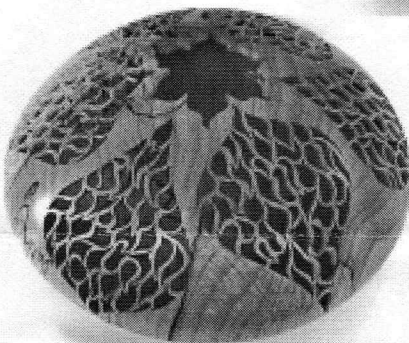
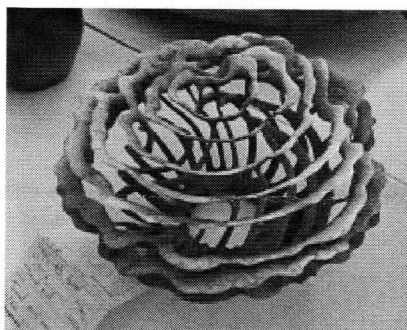
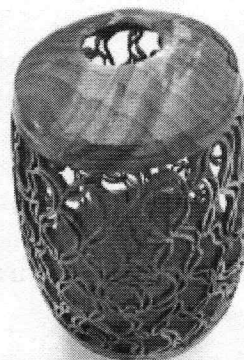
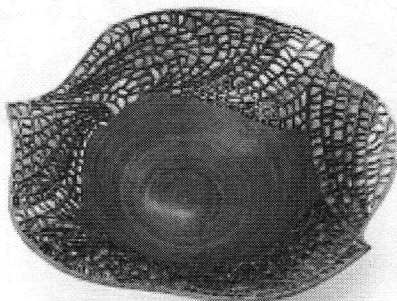
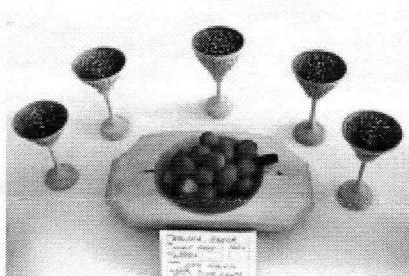
Hank & Mal awaiting crowd



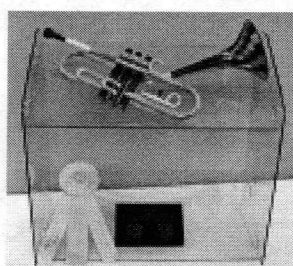
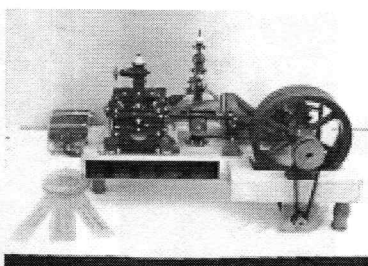
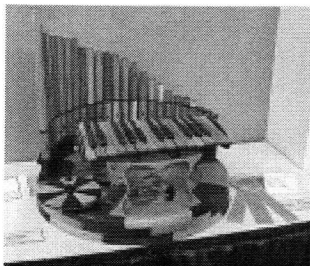
Some of the Chapter Collaborative 25 Entries



Mal checks out Chicago's entry - note Gnome brochure in hands of member



Just a few of the many creative, beautiful, amazing, impossible, colorful pieces of art at the Instant Gallery



The Three Honorary Mention Chapter Collaborative Challenge Winners

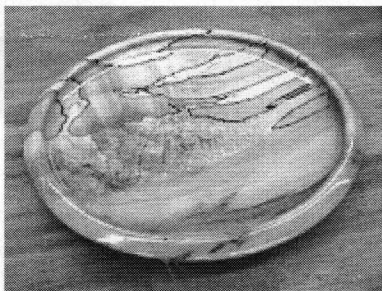
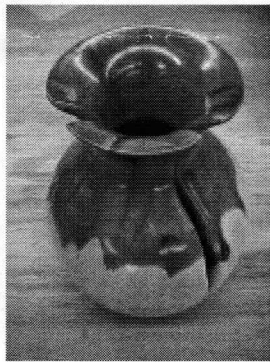
Mal & Demonstrator Myron Curtis

Check out the AAW web site for additional pictures: <http://www.woodturner.org/sym/sym2000/chapchal/>

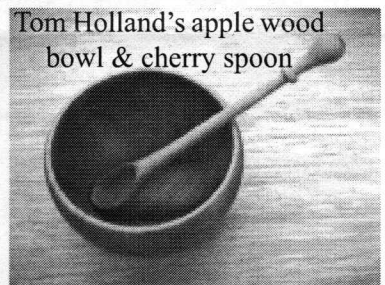
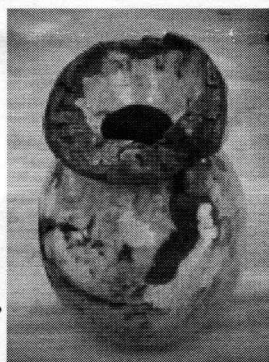
June 2000 Show & Tell



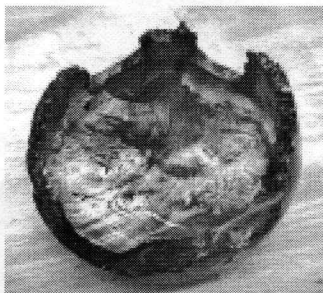
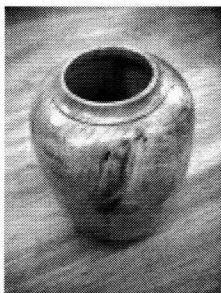
Completed AAW chapter collaborative rotary engine project and Cherry table by Tom Holland



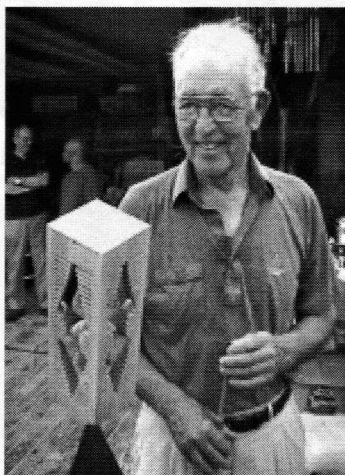
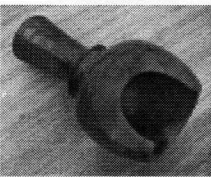
Felix's 3 fine pieces - "cedar crack"
Spalted maple plate & Maple burl



Tom Holland's apple wood
bowl & cherry spoon



Richard Friberg showed 4 nice pieces - the maple burl
received from Roger - the scoop is from walnut



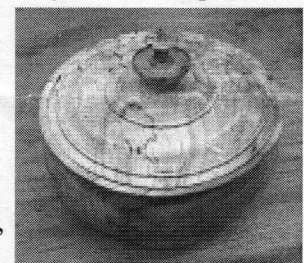
Wally, after much practice, completed a parting tool art
work to his satisfaction - so light it floats in space!



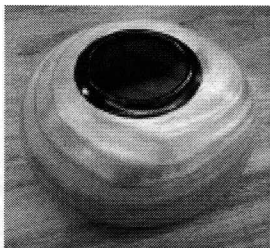
Hank's pauloma, walnut, zebra,
and ebony vase - walnut from
1st Gnome crankcase



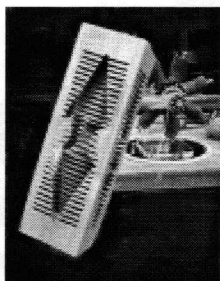
Roger Hill's Maple Burl



Jeff's spalted maple box



Pauloma w/ walnut rim
(painted black)



Hank's Pauloma bowl with gold
epoxy filled decoration designed
by his grandson