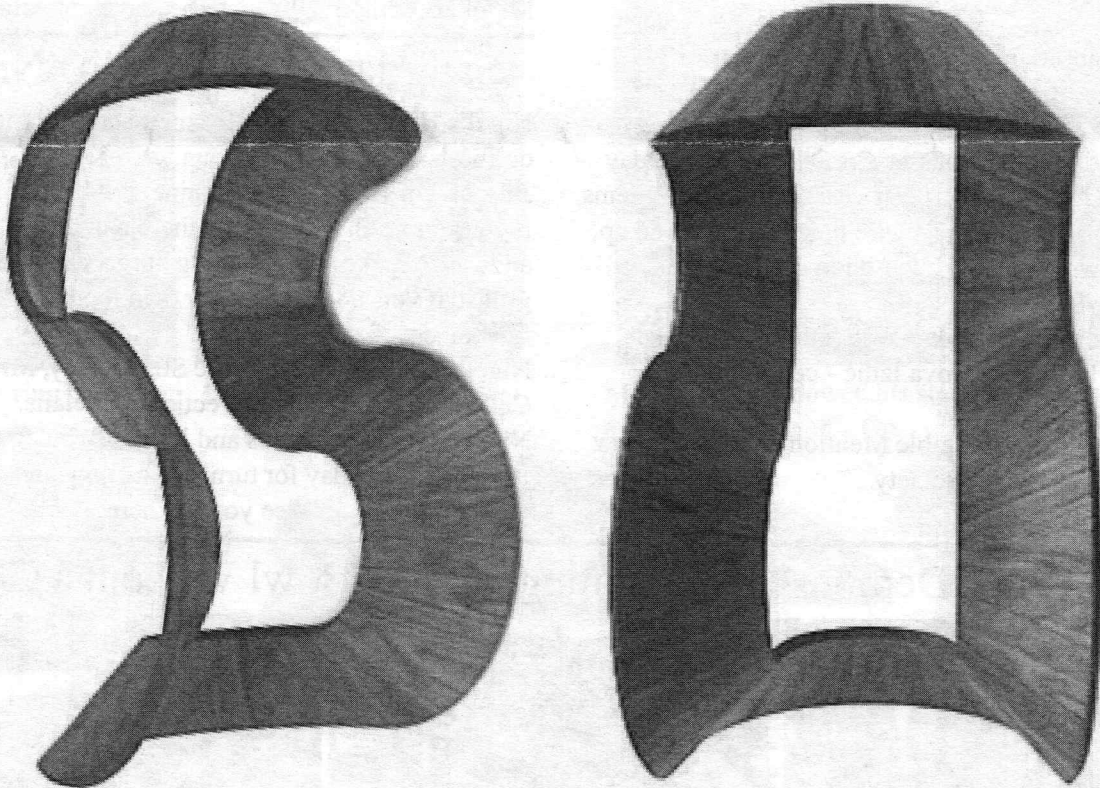

AS THE WOOD TURNS

July 2007 Issue 121

These Bowls Don't Hold Water!

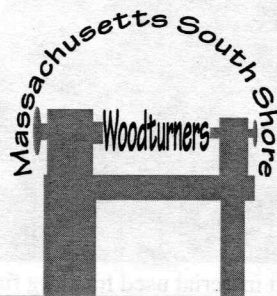


But They Do Hold Your Attention

Ron Robertson was inspired by the article in American Woodturner "Twisted Possibilities" by Malcolm Tibbetts to turn three stave-constructed Cherry bowls, cut them, and glue together to form a twisted shape. Two views are shown SO you can see how the twisted ribbon seems to change shape depending on how viewed.

2007 MSSW Officers

President - Hank Cahill (781) 878-0234
Vice President - Richard Friberg (508) 378-2436
Treasurer - Wally Kemp (781) 871-1390
Secretary - Mal Partridge (781) 843-3883
Librarian - Leonard Mandeville (508-586-7679)
Newsletter - Mal Partridge (781) 843-3883
Web site: <http://www.mssw.sitelinker.org/>



Next Meeting

Tuesday, July 24, 2007, 7:00 P.M.
At Hank Cahill's *Dust Bowl*
Refreshments by: Jae Ewart
Member Challenge: Something to turn at
Nigel's Hand's On Saturday
Demonstration: TBD

Meeting Minutes

The meeting started at 7:00 pm at Hank Cahill's Shop

Visitors John Keane from Whitman and Ed Corvelli from Duxbury have become members.

Hank reported that the AAW Grant check for \$550 was received and passed on to Treasurer Wally Kemp who reported \$1042 plus the \$550, \$275 from Ken, and \$54 Mal collected from previous meeting.

Hank asked for demonstration suggestions.

Lenny the Librarian reported a few late items. He received donations of 2 books and 2 DVD's.

Ken reported on the Cohasset Art Festival. Three day sales were \$1200 (same as last year). Jeff said all items were underpriced and items with holes were picked up, but not always sold. A skew used in demo was lost.

Sidney Katz has a new One-Way lathe and Stephen Jean-Marie has a new Nova lathe - congratulations!

Wally received an Honorable Mention at a Juried show by the North River Art Society.

Andy reported on the Yankee Symposium which was attended by 223 people. The Demonstrators liked the size of audience. Vendors included One Way. Twenty MSSW members attended, the most from any group.

Jeff requested items for Norwell Library exhibit be dropped off at Hank's Shop for pickup.

Ken talked about our exhibiting at King Richard's Faire.

Ian had CD's with photos from Yankee Symposium.

Members without 2007 on label have not paid dues.

Saturday Hand's On At Nigel's

Nigel's Hand's On Party for members and their wives or guests, will be under the tent at his shop Saturday, July 21st. at 10 am. Rain or shine. Pot luck is good, but if you can't bring something there will be loads of food anyway. Nigel will be cooking burgers and dogs on the grill so if you want bring your own food to cook that's fine too.

Nigel's address is: 9 Wallace St., Berkley, MA.

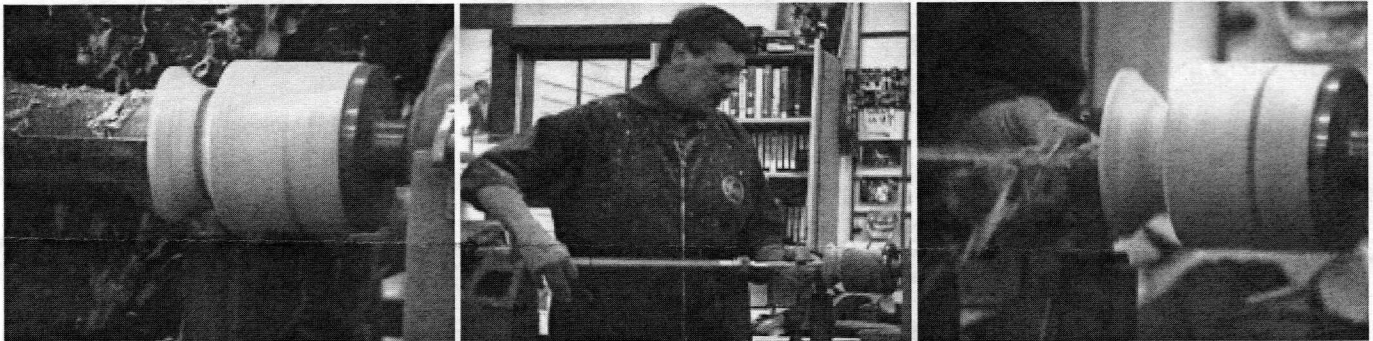
Cell #617-593-7750 for directions or details.

Nigel hopes to see loads and loads of you on the 21st.

It's a hand's on day for turning, learning and eating!

See you all there.

Nigel Howe Demonstrated Turning a Small Bowl Without a Chuck

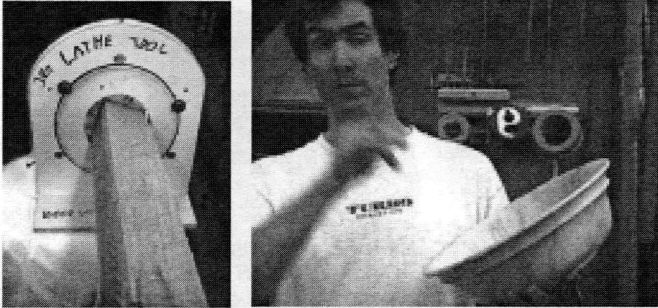


Stock mounted to faceplate with extra stock allowed for jam chuck. Outside and inside turned to shape and parted off.



Jam chuck is turned without a taper to fit bowl. T shirt material used for snug fit. Taped in place with masking tape. Bottom turned

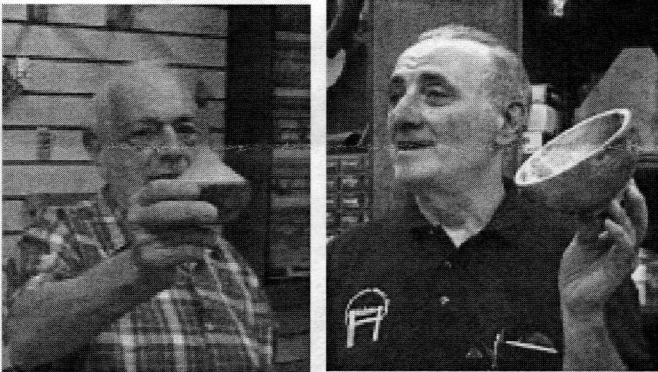
More Show & Tell



Mike's square fixture for newell posts & large bowl

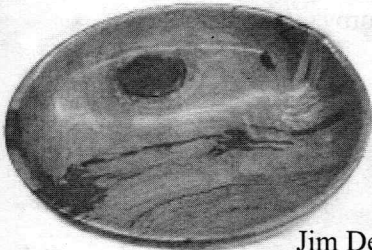


Mike Wells Jr. showed his scrolled Ireland plaque at a Saturday Hand's On



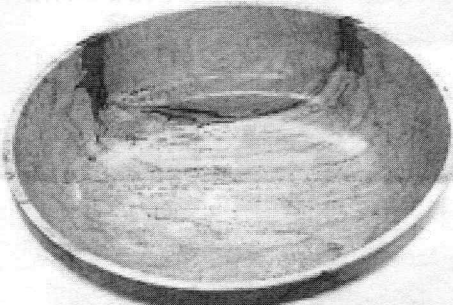
Bernie's ring holder

Bob Iuliano's smile & bowl

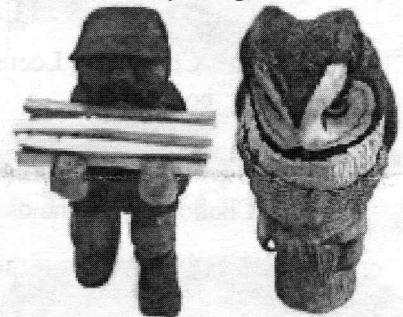
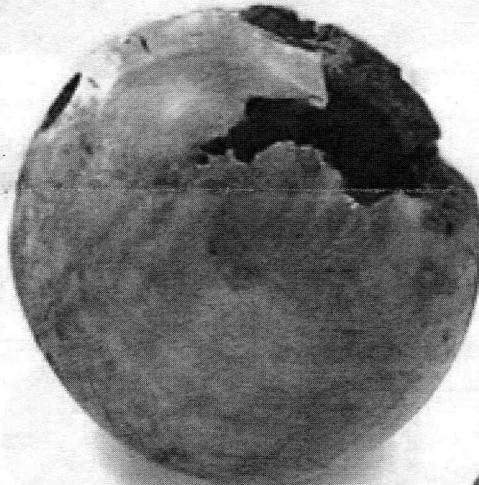


Jim Denker's first turned dish and Phantom fish from Apple tree

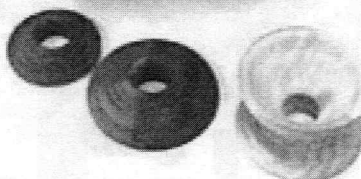
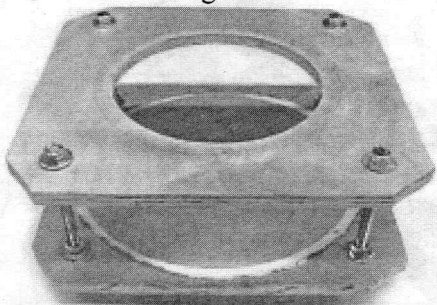
Lenny Langevins bowl



Jeff's large Maple bowl and turning fixture



Bill George's carvings



Wally's large sphere with proposed caps and small ball and donut chuck

Show & Tell

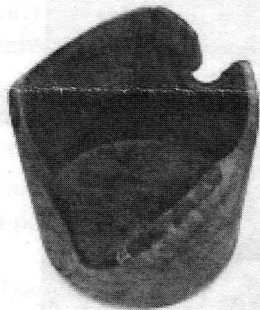
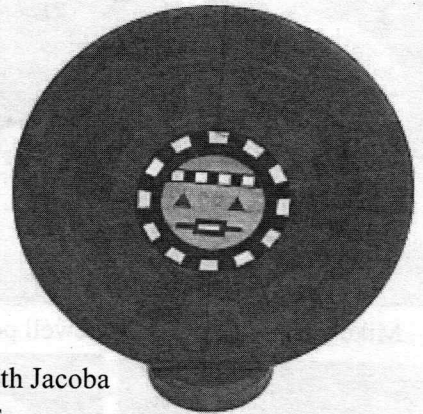
June 2007



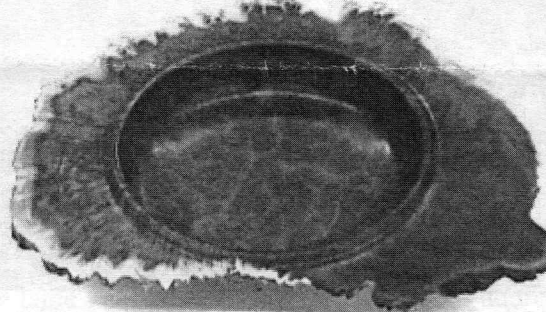
Bernie's off center Oak piece with torch burning



Ian's segmented pieces: Birch and Holly with Jacoba bottom bowl and plate from scraps



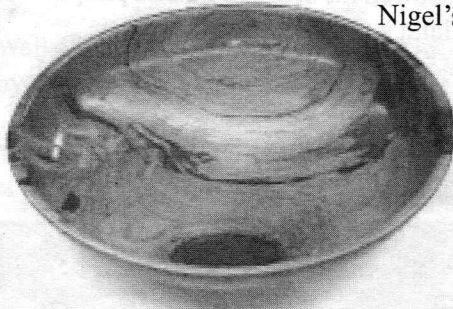
Ron's burl piece



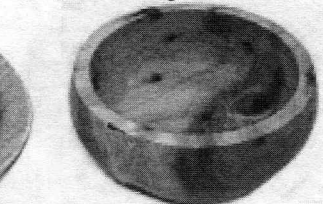
Nigel's Australian Horistas Burl piece



Andy's Cherry bowl textured with Sorby texturing tool

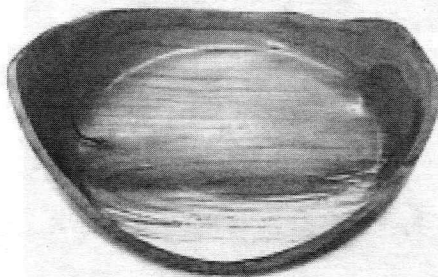


Paul O'Neill's Cherry and Locust bowls

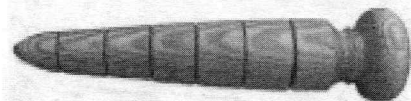
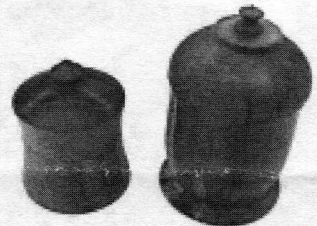


Don's bowl from Cedar crotch

Jae Ewart's Maple Member Challenge ring stand



Bob Trucchi's boxes and dibble



Charlie Rosen's Apple bowl and dibble



Ken's Oak burl piece and Willow burl bowl on branch

