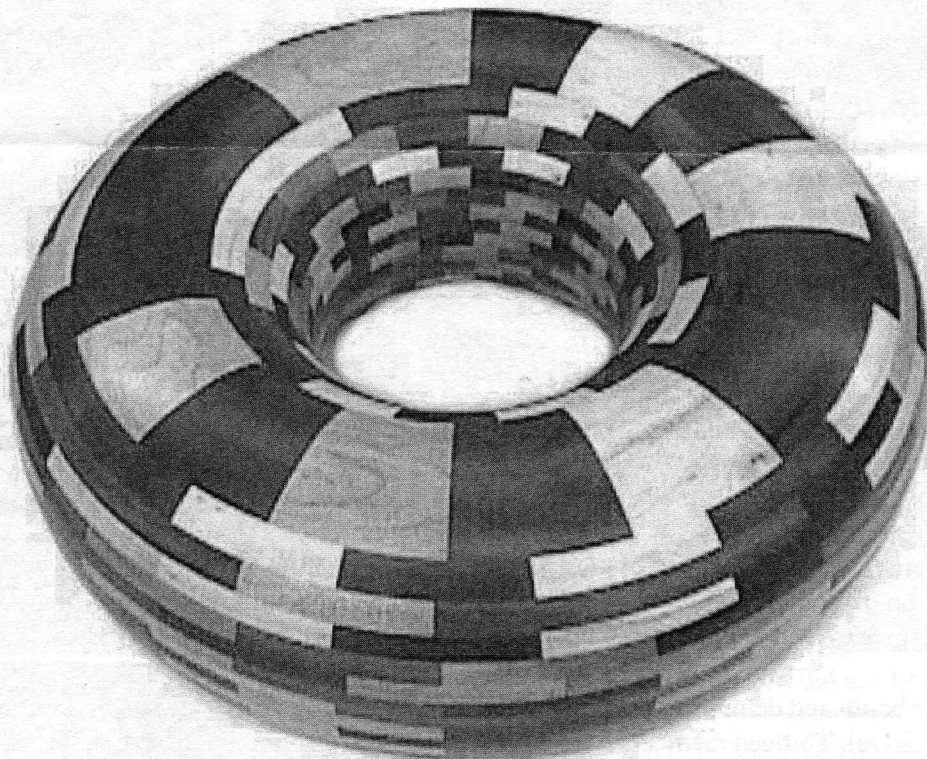

AS THE WOOD TURNS

July 2008 Issue 133

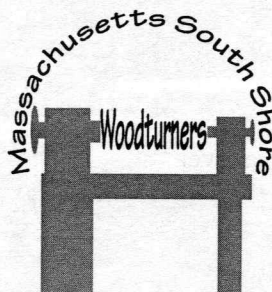
Donut Shop Challenge



Ron Robertson's large segmented Maple, Walnut and Bloodwood turning offers a good challenge for Donut Shops to duplicate as an edible donut, perhaps from wood flour!

2008 MSSW Officers

President - Hank Cahill (781) 878-0234
Vice President - Richard Friberg (508) 378-2436
Treasurer - Wally Kemp (781) 871-1390
Secretary - Mal Partridge (781) 843-3883
Librarian - Ron Robertson (781-545-8295)
Newsletter - Mal Partridge (781) 843-3883
Web site: <http://www.mssw.sitelinker.org/>



Next Meeting

Tuesday, July 22, 2008, 7:00 P.M.
At Hank Cahill's *Dust Bowl*
Refreshments by: Ron Robertson
Member Challenge: Donut/s
Normal size, textured to simulate type
Demonstration: TBD

Meeting Minutes

The meeting was called to order at 7:00 pm at Hank Cahill's Dust Bowl

President's Report and General Business

Guest present were Rick Gagnon from Weymouth and Taik Wong from Quincy.

Hank showed a copy of the CNEW SKEW newsletter that featured Nigel's Jam Chuck demonstration. "It was all Nigel!" Newsletter received from Surrey England group and Lenny Mandeville gave him information on The Woodery Lumber Company Lunenburg, MA.

No Hand's On at Hanks as Nigel will have a Hand's On at his shop on July 12th.

Mal submitted Newsletter expenses for 5 months of \$247.25 to Wally for payment. He again called for refreshment volunteers for future meetings.

The Nocona Bat Factory in Fall River is now open. Bernie will contact them to arrange for future tour.

Binder was passed around that included articles on Turning Tool Handles, Jazzing Up a Hobby Knife and information on a new hobby shop in Braintree, MA

Ron reported that some books are overdue from library. He has given a talk on computers and free programs available and would give to members if interested.

Ken reported on our booth and demonstration at the South Shore Arts Festival. Thirteen members worked at the show. \$2500 in sales. Each member with items on display or for sale were charged \$25 to cover entry fee.

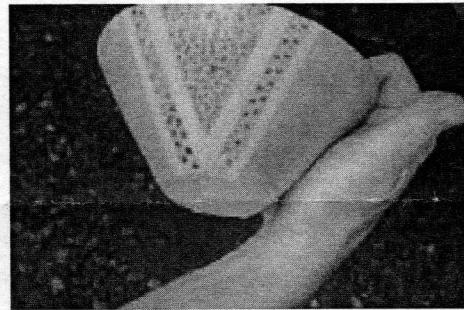
Ian has volunteered to do maintenance on our Lathes for Hand's On at Nigels. Note: Ron Robertson and Ian made the excellent safety windiws for the lathe stands. They can be seen in the photos of Nigel's Hand's On. Thanks for the great work, appreciated by all members.

A \$100 donation was authorized for CERF Relief Fund.

Wally received a check for \$100 from Jean LeGwin for 5 year membership and reported that treasury has over \$2000.

A work party meeting location was set up to cut up a burl located in Duxbury. Notice sent by Email.

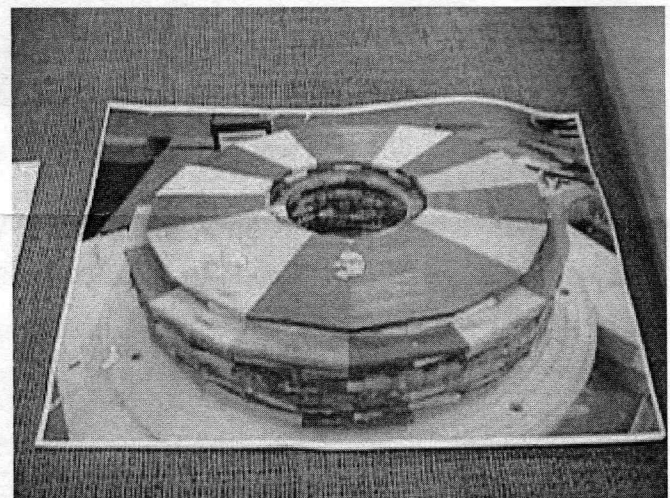
Members reviewed the AAW Symposium held in Richmand, VA. They thought Angelo did good job. Good spacious setup with 15 demonstrations at a time. \$60,00 received at auction. Ken said one session had nothing at all to do with Woodturning. David Rice went to some great sessions and thought the Symposium was well worth it. Bob Allan said there was some very high end work, but demos were on everything. William Hunters talk was great. All are looking forward to 2010 AAW Symposium in Hartford, CT.



Andy Osborne used a Dremel tool burr to decorate his turning at Nigel's Hand's On



Jim Denker demonstrated his new DENKER 35MM Rotary Planing and Carving Head at Nigel's Hand's On

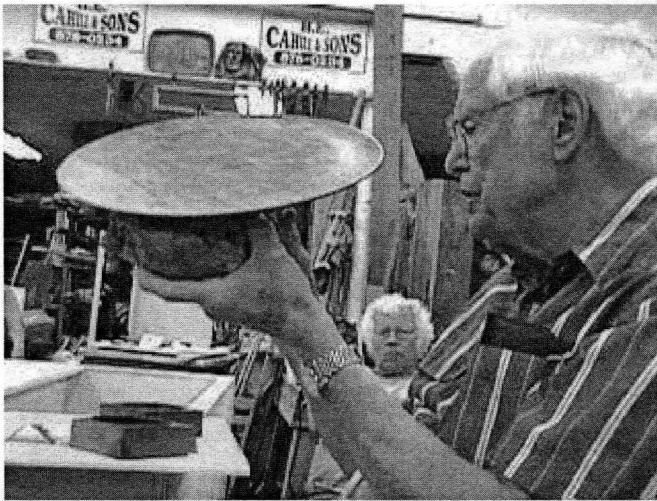


Ron Robertson's doughnut in raw ingredient state.

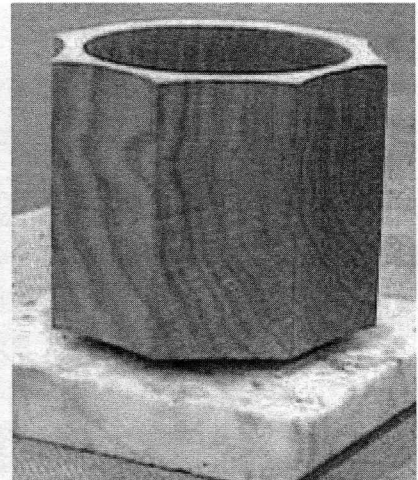
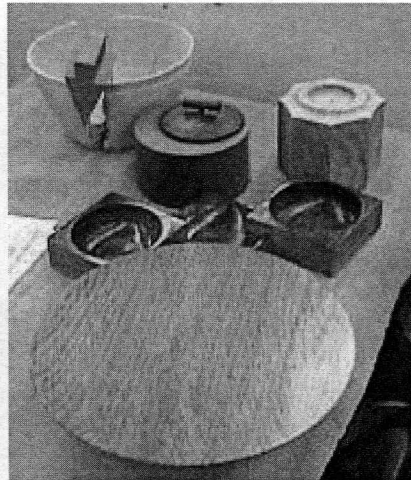
Welcome New Member

John Destrampe from Rockland

Bob Sutter Gave an Interesting Talk on Design



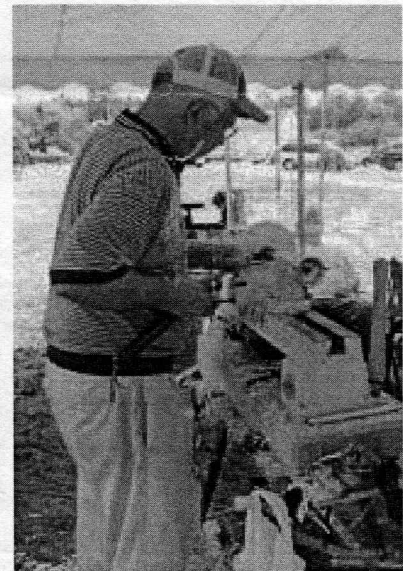
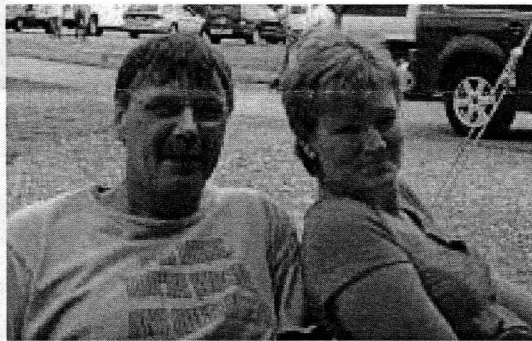
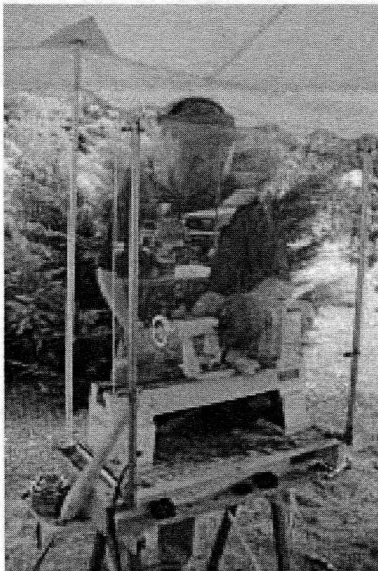
What you see and how you see it is critical to good design. Work out design on paper. Check pottery for design ideas



Example pieces used during Bob's presentation

Add a base spacer and see how the piece floats!

A Great Turnout for Nigel and Gill's Annual July Hand's On Party

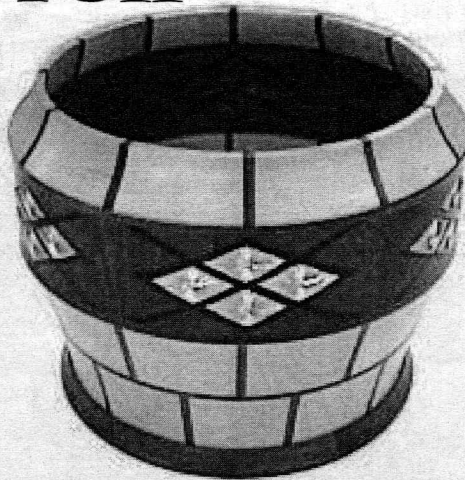


Show & Tell

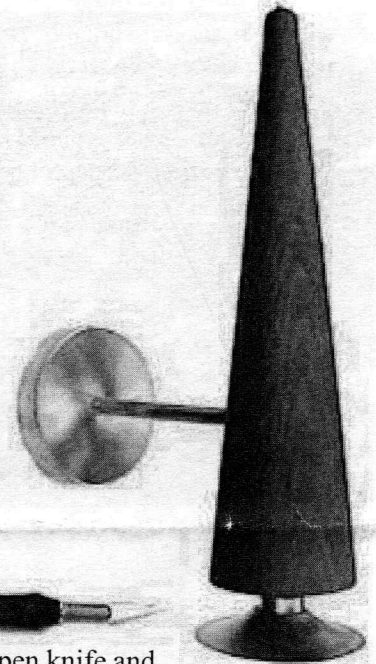
June 2008



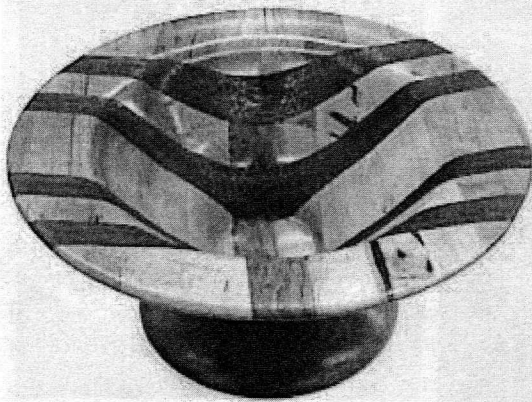
Sid Katz's punky Pine piece held together with Bartop Epoxy



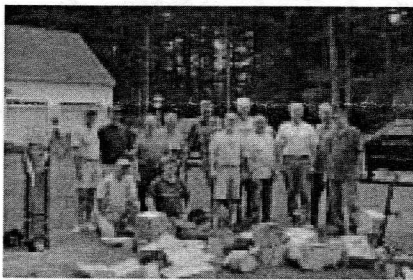
Harold Dyke's Black Walnut, Maple and Ebony segmented turning with Pewter inlays



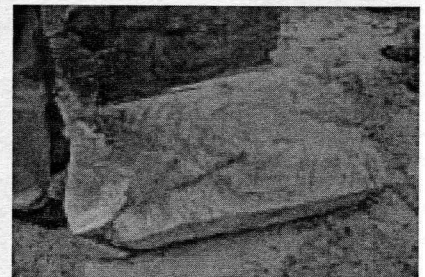
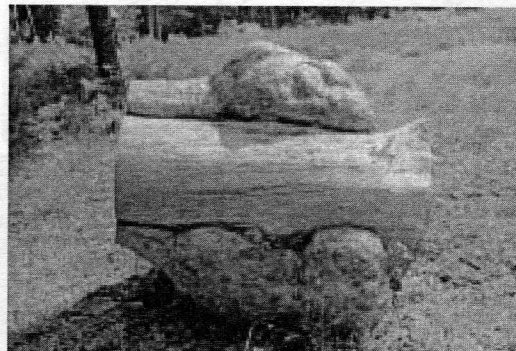
Member challenge Curly Maple pen knife and wall lamp by Mike Veno



Ian Manley's Maple and Mahogany piece, Cedar goblet, 3 Quina wood boxes and box turned with skew at Cohasset



A Group of Cutups!
Duxbury Burl Work Party
Saturday, July 5, 2008



Thanks to Bernie Feinerman, Ed Corvelli and Bill Dooley for supplying photographs of the work party.