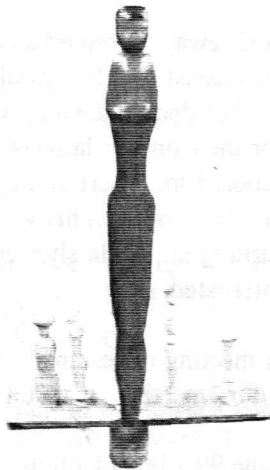


AS THE WOOD TURNS

June 1999

Wally Kemp Demonstrated Off Center Turning



Multi Center Ms Oscar

He also discussed multiple center turning showing practice pieces and a tall slender turned figure shown above.

Wally Won 1st Place Sculpture at the North River Arts Society Festival Of The Arts with his turned vase *Origins*.

Judges comment:

Natural Quality
Leaf enhances spirit of work.
Superb!!



It Wasn't Thanksgiving But We Had Lots Of Goblets

And not a turkey in the lot



Jack Nash's 8 Holly and Beech Goblets.

Members presented a total of 22 goblets at show and tell! A great challenge response.

1998 MSSW Officers

President - Hank Cahill (781) 878-0234
Vice President - Felix Troiano (781) 749-1713
Treasurer - Wally Kemp (781) 871-1390
Secretary - Charles Rosen (781) 848-6589
Librarian - John Murphy (781) 834-1179
Newsletter - Mal Partridge (781) 843-3883



Next Meeting

Tuesday, June 22, 1999 7:00 P.M.
At Hank Cahill's *Dust Bowl*
Refreshments by: **Janet Collins**
Member Challenge Project: **Lidded Box**
Demonstration: **Hank** discusses finishing
Members to bring an unfinished bowl

Meeting Minutes

The May meeting was called to order at 7:15 at Hank Cahill's Dust Bowl

President's Report

Hank reviewed correspondence and contacts: A large box of catalogs was received from Craft Supplies USA along with 4 \$25 merchandise gift certificates. It was agreed that one certificate would be raffled each month. A tentative date of Saturday, Sept 25 has been set for Al Stirt's demo. Hank will meet Jack Vesery at Tacoma. See the Summer 1999 American Woodturner, page 30, for an article about Jack.

Treasurer **Wally Kemp** reported \$1,022.85 in treasury.

Librarian **John Murphy** accepted from **Mal** 3 new videos received from Robert Sorby. Members looked forward to reviewing them. He again requested return of books and videos checked out some months ago.

Old & New Business

Hank commented favorably on **Mal's** report on Keith Rowley in last newsletter. Editors Note: A written report, with pictures, by members who attended AAW Tacoma would be appreciated for next newsletter.

At the South Shore Art Center's juried show **Roger Hill** & **Jack Nash** had pieces accepted. **Hank** won a 3rd place. Congratulations!

Our group had 7 pieces accepted for display at the North River Art Society Festival Of The Arts on Memorial day weekend. **Jack Nash**, **Roger Hill**, **Richard Friberg** 2 pieces each, and **Wally Kemp** 1 piece.

Wally reported that we will again be demonstrating at Audubon Farm Day this fall.

Janet Collins showed samples, purchased in 10 lb. lots for \$10, grits from 80 to 400, from a sandpaper supplier: C & S Abrasive Supply, 7700 Fitzwater Road, Brecksville, OH 44141 Tel (440)546-9592.

Paul Marks requested advice on removing end play on lathe headstock bearings.

Mal's daughter purchased Wally Kemp's 1st prize birdhouse at the South Shore Habitat for Humanity show and auction. The birdhouse was turned from wood obtained from a tree cut down behind her home at a dam reconstruction. While Mal was at the show a gentleman who saw **Wally Kemp's** name on the birdhouse mentioned that he knew Wally fifty years ago. As Tufts students they dated Smith girls at a dance! Wally recalled the event with fond memories and good humor.

A Oneway Stronghold chuck with a 1 1/2 x 8 insert, purchased by **Mal**, would not fit his South Bend Lathe. Rather than place a special order for an insert designed for the Conover lathe (#302), which would fit, he rebored the insert and can now use the chuck with another insert on his wood lathe as well as on the metal turning lathe. He showed the modified insert to those interested.

A meeting refreshment list, prepared by lottery, for future meetings is as follows:

June 99 - Janet Collins

July 99 - Jesse Meyer

August 99 - Richard Friberg

September 99 - Cristina Dutra

October 99 - Jeffrey Keller

November 99 - John Sousa

December 99 - Christmas Party - All members

The May newsletter was printed by Kinko's for better photo quality at only a small increase in price. They printed 150 copies by mistake rather than the 50 requested - plenty of extra copies for members! The previous issues were produced on an Office Max copy machine which has become useless for reproducing photos and was time consuming. Member's work is worth reproducing as faithfully as possible. Newsletters in color are available for viewing at the meetings and for downloading off the internet.

The June member challenge project is a turned lidded box. **Hank** will prepare a list for future challenges. This has been a successful program with many members participating.

Janet Collins won the Turned Object Lottery for the turning by **John Shooshan**, now it's her turn to contribute a piece for June's lottery. A wood swap was also held after **Wally's** demo on off center turning.

Members: Bring an unfinished bowl to be finished by **Hank** or you at next meeting.

Lathe Turning Tool Rack

By Mal Partridge

This tool rack was constructed to accommodate the 15 Sorby Micro Turning Tools and could be adapted to hold larger tools using PVC pipe of suitable size. Thanks to Tom Kamila for the basic idea for the shape of the PVC tool holders.

This rack has a number of features:

- Can be wall mounted or set between lathe bed rails.
- Carrying handle for portability.
- Backboard for tool visibility and injury protection.
- Dowel tool support prevents chip accumulation and connects holders for rigidity.
- Low cost but looks good and works well.
- Tools are easy to remove and replace.

The holders were fabricated from 1" Bristol Pipe PVC 1120 SCH 40 ASTM D-1785 (1 1/64" I.D. 1 5/16" O.D.) Cost \$1.98 for 10 ft.

Other PVC pipe sizes for larger tools:

- 1 1/4" - 1 11/32" I.D. 1 21/32" O.D. (Holder length 8")
- 1 1/2" - 1 19/32" I.D. 1 29/32" O.D. (Holder length 11")

Holder fabrication is the same but mounting details will vary.

Two 6" holders are made at a time from one 9 1/16" length of pipe. The 1/16" allows for saw cut and finish sanding. Drill a 5/16" hole at each end of the pipe centered 5/16" from each end and in line with each other. A fixture with a 5/16" alignment dowel to locate the piece in the first hole helps align the second hole. Make sure the holes are centered on the pipe.

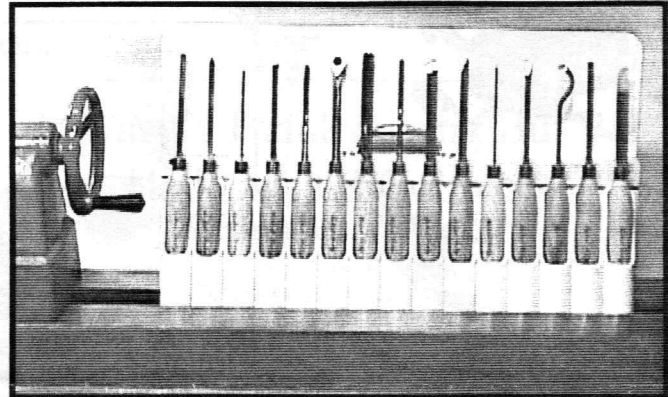
Layout a symmetrical cutting line starting 3 1/32" from each end with the dowel holes in a vertical position. Here again a board with a dowel positions the pipe properly and can be used when cutting the two holders apart on the band or scroll saw. See side view for layout. (Once you have a finished holder you can attach it to the other pipe lengths with a short dowel and scribe the cutting line with a pencil. Do this from each end and you will have two parallel lines for cutting between.) Sand to remove saw marks and flash. A scraper is used to deburr edges.

Drill and countersink a hole 1/2" from top of holder and centered for a 1/2" #6 flat head screw.

Prepare a 1x3-20" long, or to suit number of holders, as shown in end view. A tapered rabbet is cut leaving a 1" flat at top. The taper is 3/16" x 1 1/2" (8°). Drill two mounting holes at each end of this piece for wall mounting. Attach the holders with one screw each (after sliding on length of 5/16" dowel) to the tapered area.

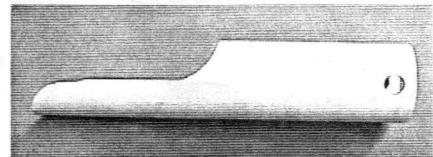
Attach a backboard made from 1/8" white masonite or thin plywood. If a handle is desired attach to top and cut out backboard for access, as shown.

That finishes the low cost aspect of this project. Next comes purchasing the Sorby Micro Tools made easier with the beautiful Robert Sorby catalog you can pick up at the June meeting!

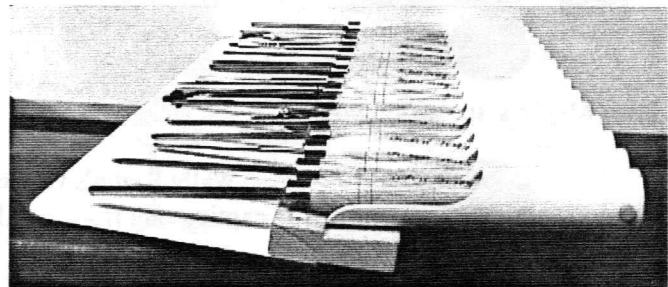
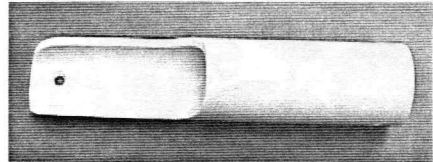


Tool rack set between lathe bed rails - handy!

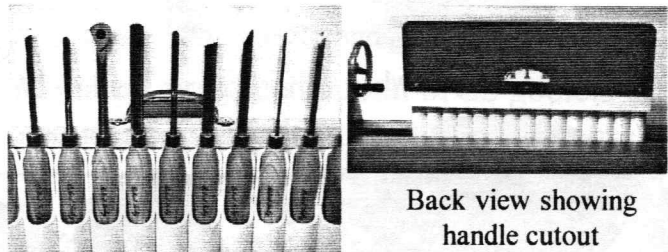
Holder side view



Holder top view



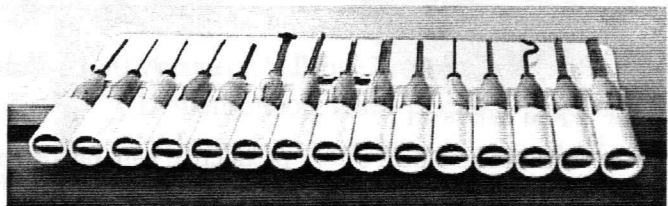
End view showing tapered rabbet in mounting board



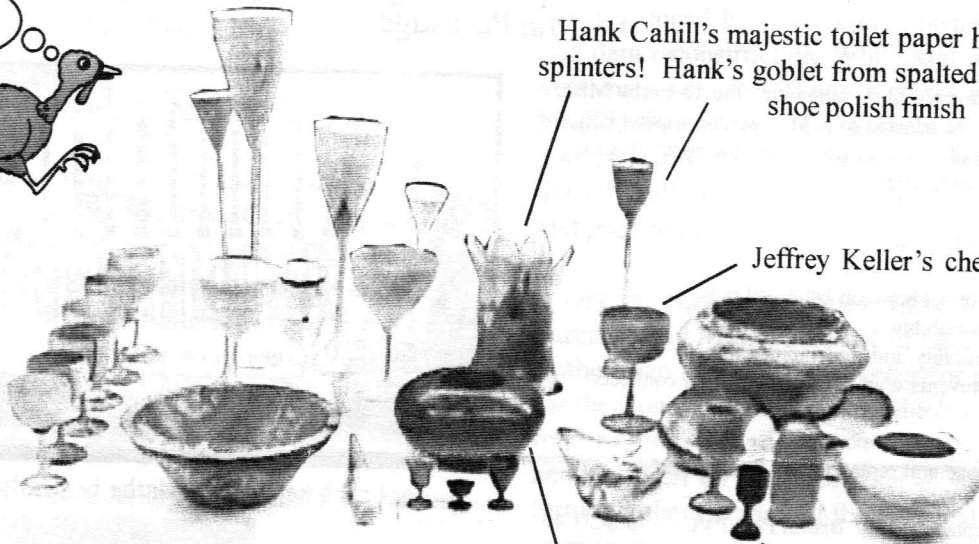
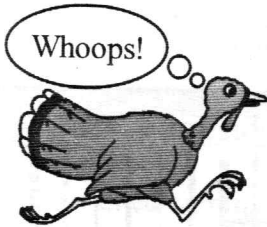
Closeup of handle area

Back view showing handle cutout

Bottom View



Show & Tell



Hank Cahill's majestic toilet paper holder - check for splinters! Hank's goblet from spalted maple with brown shoe polish finish

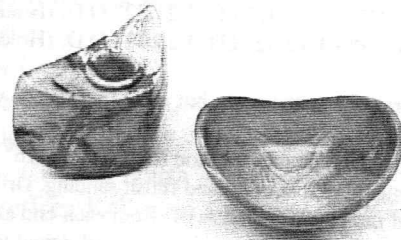
Jeffrey Keller's cherry goblet

Wally's cherry burl bowl - he likes the shape, so do we

John Shooshan's early goblet turnings - cherry and cocobolo



Jesse Meyer's six maple goblets



Emilio Iannuccillo turned all faces of the maple diamond shaped object. The bowl turned from rhododendron "found along the side of the road" has a red crayon decorative band below rim



Cherry bowl

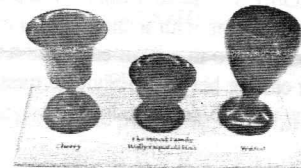
Wally Kemp's Goblet with captive ring from a walnut limb



Stopper



Mal's sanding fid

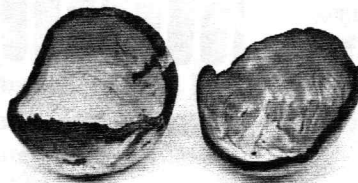


Mal's miniature goblets - The Wood family: Cherry, Wally "chip of old block", and Walnut



Red oak bowl

Richard Friberg's very productive with his recently obtained Oliver lathe, 5ft. bed, built in 30's!



Cherry Burl Crab apple



Charlie Rosen's Silver Maple Spalted Bowl