

AS THE WOOD TURNS

June 2018 - Issue number 244

Hands On was June 9th ; July Hands On is the club picnic July 28th at Peter Soltz's home in Canton

August 11th Hands On at Hank's Dust Bowl

We invite beginning turners to a learning opportunity at the Hands On for one on one instruction. Spindle or bowl turning techniques will be covered. Please reserve your lathe with Pablo Gazmuri @ pgazmuri@comcast.net

Jim Flannery's train set



Jim Flannery's train set went back home to Boles Road Marshfield where it was fabricated. Accepting the donation from the South Shore Woodturner's was Jim's son in law who is remodeling the house for the Flannery family.

Minutes of the June 26th meeting

Visitors- Glen Williamson from Hull; Dan Callahan from Weymouth; Tom Stewart from Mansfield and Lynn Siegman from Norfolk

Picnic- Prior to the picnic on Friday, July 27th the club needs a volunteer to drive the loaded club trailer to Peter Soltz's home in Canton from Hank's. Help is also needed there with unloading tables, the grinder and two lathes and setting them up. This is a potluck event where members are encouraged to bring side dishes of vegetables, fruit or dessert. There will be hot dogs, hamburgers and cold drinks. Bob Monaghan has volunteered to bring lobsters as well. Thank you Bob! The party begins at 10:00 am and goes until the last person leaves. This will also be the club Hands On for the month of July so bring your tools if you want to turn.

MSSW Officers

President- Steve Wiseman
(508)-285-9394 stevwsmn@aol.com
Vice president Len Langevin
(508)-789-4211 lennysminiatures@gmail.com
Treasurer John Duggan
(508)-583-7930 john.duggan06@comcast.net
Secretary Tim Rix
(617)-259-5618 rix.tim@gmail.com
Librarian Lenny Mandeville
(508)-586-7679 manleo@comcast.net
Webmaster Tim Rix
(617)-259-5618 rix.tim@gmail.com



Tuesday July 24, 2018

- at Hank's dust bowl at 409 Washington St., Abington, MA at 7 pm

Refreshments – by Jeff Keller

Demo - Michael Veno will turn his flowers for us

James Library has a one day Christmas Craft Fair Saturday, December 2nd, from 9:00 am to 3:00 pm. The fee is \$95.00 to be split among those selling items. We will get an eight foot table for our display. This was voted on and passed as a club sponsored event.

Summerfest- Takes place Saturday, August 18th at the Brockton High School. Headed up by Michael Veno, we will turn tops for the kids and have a table to display and sell turned items. Mike is looking for volunteers to turn tops from 10:00 to 1:00; 12:00 to 3:00 and 3:00 to 5:00. We will have two lathes. Turners for this event must be members of AAW for insurance purposes. This is a club sponsored event. Tell Mike if you want to participate.

Steve announced that he has a meeting scheduled with representatives from the Arnold Arboretum and the two other participating woodturning clubs on July 10th to finalize things for our show and exhibit there October 6th thru 8th on Columbus Day weekend. There will be a Friday night reception. There will be demos inside and outside. This is being treated as an educational event. We will need display case pieces to be brought to the August meeting. More on this later.

John announced the club has \$5200 in the bank.

Wayne Miller said he is moving and has a large pile of exotic hardwoods available for sale at a discounted rate. Contact him if you are interested.

Steve told us that Downes & Reeder Hardwood is now known as Rugby ABP (Architectural Building Products) in Stoughton. They have new hours of operation. Retail wood sales are from 7:00 am to 1:30 pm Monday through Friday. Saturday 7:00 am until 11:30 pm.

Cohasset festival- Steve announced the club wanted to extend it's thanks and appreciation to Lenny Langevin for running the event. The club also wanted to thank John Shooshan for the 150 plus tops he turned and gave away to excited youngsters. Lenny said he wanted to thank Bill Leary for manning the club trailer to haul items to and from Cohasset as well.

The club grossed \$6,150 for the event including the sales tax. This sets an all time record for sales. There were 69 individual sales (some were multiple items). Everyone who participated sold something in our 30 foot tent. Steve said it was the best display of merchandise he has seen. Steve also received a second place award in the juried portion of the show.



Eleven turners participated in the Festival- Lenny Langevin, Lenny Mandible, John Shooshan, Ken Lindgren, Andy Osborne, Steve Wiseman, Jim Kelly, Bill Dooley, Jeff Keller, Kevin Mulligan and Ellen Williams.



Lenny and John turn some tops



Bill Dooley works on a chalice for some lucky person.



Lenny turns another top



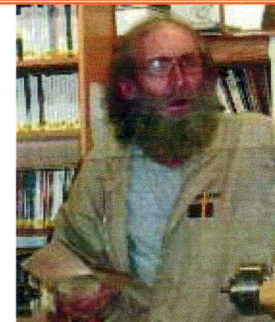
John parts off yet another top



Steve was awarded 2nd place for his juried turned work seen here. He also entered a natural edge bowl.

Demo – making a winged bowl

Ian began his demo with an explanation of how he positions his blank prior to turning it on the lathe



The wood consists of an 8-12 inch blank 3-4 inches in diameter. Ian drills a 5/16 inch hole in the center for mounting and brings up the tailstock



The back, or bottom, of the wing box has been turned with a formed tenon & rotated around to facilitate hollowing out the inside.



The bottom is hollowed out & you see a profile of the (almost) finished bowl. The tenon needs to be cleaned up.



The finished winged bowl

Show and Tell

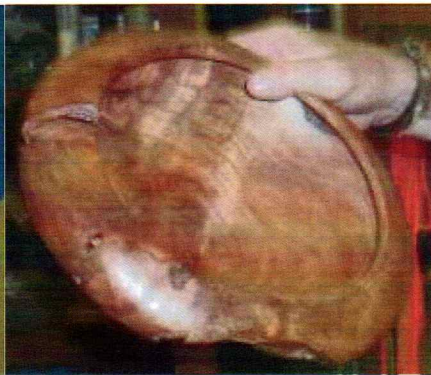


Michael Veno's turned flowers in stands. Michael used wet wood - twigs from a tree which he cut into end grain and turned over to form the flower petals. He then dyed them. The bases are turned from apple.



Charlie holds two goblets turned with a natural edge & captive ring. He used a texture tool & wipe on poly finish on the first one, the second goblet has a natural edge with a burl top & bottom with an Ebony stem.

Steve Herrmann showed us this spalted Ash bowl which he filled parts of with CA glue. The finish is Tung oil.



Kevin showed four Cherry bowls turned from a root. He finished the first bowl with Hampshire Sheen and Yorkshire Grit sanding to 600 grit before buffing with the Beal System. He said he spent more time on finishing it than on turning,



Kevin's fourth Cherry bowl - this one is nice and thin - natural edge example.

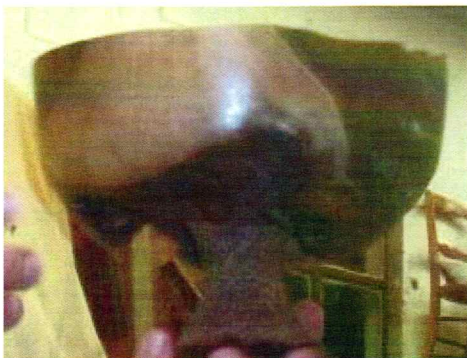


Wayne holds a "Telidlescope", so called because it has a lens at the end instead of a collusion of oil with pieces in it to create different shapes when viewed. It is segmented acrylic with three special mirrors inside. Wayne used a number 16 IPS acrylic solvent in gluing the pieces together.



Glenn showed a small Walnut bowl he turned recently & two pens from Purple Heart

Ben showed us this Black Walnut bowl



Ken holds a pedestal bowl in these two views. He started with a piece of Walnut with some outside rot. The base is also Walnut but Ken used Maple for the stem. He turned a round tenon to unite the top and bottom which he textured. Next he hit it with a blowtorch for color and added some coffee grounds for texture. The end result is that the stem matches the upper and lower walnut fairly closely.

Andy holds a large Cedar bowl from wet turned end grain. He used superglue inside and out. He finished it with a Urethane gloss oil.



Lenny showed us a natural edge piece of wood which he hollowed out two center areas. He said it was going to be thrown out upon which Ken Lindgren volunteered to take it home and repurpose it to give back to Lenny. The second picture is a piece of Cholla Cactus (center) wood which Len received from Bernie, the third is a small chunk of Maple burl & added an Ebony foot, & lastly this cane he turned from Tiger Maple. He added a brass collar & a "Berniewood" knob, sanded to 3000 grit & used wipe on poly for the finish. It was then buffed. Rubber tip



Two views of Sid's latest box with a Woodturner's friction fit. The top has a textured look also. The wood is Batu from southeast Asia which is similar to Mahogany. It is finished with Myland's Friction Polish.



Chainsaw party
Saturday's [6/30] Chain Saw Party at Peter Bickford's place in Hingham. Peter was the recipient of two pieces of maple tree with many burls cut from a site on Main Street, Rte 228 in Hingham.

Pictured (l-r) are Tyler Paine, Bill Dooley, Tim Rix (behind him), Ellen Williams, Wally Kemp (our supervisor), David Rice, Ken Lindgren, Ken Whiting (behind him), Andy Osborne & Joe Feeny. Not pictured- Jeff Keller



One of two parts of the maple tree with several burls in evidence



Ken Whiting and Joe Feeny cut into the trunk.



Ken Whiting & Tim Rix discuss a cut as Ellen Williams looks on.



Andy Osborne goes to work.



Ken works on cutting through a 3 ½ foot part of the trunk



Joe makes a long cut through the center.



All together now! The trunk is rolled over with assistance from Ken Lindgren, Andy Osborne, Tim Rix, Joe Feeny & Ellen Williams.



At the end only a few pieces were left. Ken takes one last cut

Upcoming Events

Summerfest- Takes place Saturday, August 18th at the Brockton High School

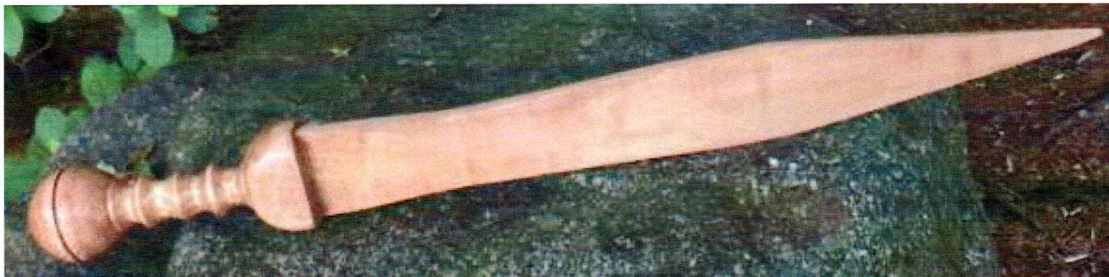
Arboretum show - Columbus Day weekend (October 6th & 7th).

Farm Day 2018 - Oct. 20 (3rd Saturday in Oct.) {Oct. 27 is raindate} at the Daniel Webster estate in Marshfield

James Library has a one day Christmas Craft Fair Saturday, December 2nd, from 9:00 am to 3:00 pm.

The Audubon Craft show for the Christmas Holidays will begin with the Open house on Saturday, December 1st. Exhibits should be dropped off the preceding week and can remain until Thursday, December 20th.

Articles of general interest



Here is a photo of a finished knife made by Sidney Katz's grandson, Alex. He came over to Jeff's shop last Saturday and turned the handle on his lathe before going home and cutting the blade part out on the bandsaw. The wood is Beech.

From: peter soltz <psoltz29@gmail.com> "Sidney and I have combined our collections of Woodsmiths, and we have issues 7 thru 145 available for no charge if one our members would like them".

Items For sale at the Club store : – contact Ron Reynolds at reynoldsrn@comcast.net

JSP respirators spare parts (batteries, tear off shields, filters, pre-filters, and replacement face shield) available in the store

MSSWT MEMBER STORE

GLUES:		PRICE
	2 OZ. CA	4.50
	2 OZ. RUBBERIZED	6.00
	8 OZ. CA	13.00
	16 OZ. CA	23.00
	THICK, MEDIUM, THIN: SAME PRICE	
	2 OZ. ACCELERATOR (spray bottle)	3.50
	8 OZ. ACCEL. REFILL	5.75
	2 OZ. DEBONDER	3.25
	4 OZ. EPOXY	6.00
	2 OZ. REPLACEMENT CAPS	0.50
	LONG NOZZLES	0.75
	2 OZ. EMPTY BOTTLES	0.75
ANCHORSEAL:		
	LARGE (approx 1 gallon)	15.00
	MEDIUM (approx. 1/2 gallon)	9.00
	SMALL (approx. 1 quart)	5.00
SANDING DISKS:		
	2"	3.50
	3"	4.50
	2" or 3" Replacement H&L Disk	0.50
	2" HOLDER	10.50
	3" HOLDER	12.50
	2" BLUE HOLDER	14.50
	3" BLUE HOLDER	16.50
	1/2" SOFT INTERFACE PAD EXTENSION	5.50
	3" HANDY SANDER (Palm Sander)	8.50
	SANDING TACO	4.50
	2 or 3" HAND HELD HOLDER (Kidney Shape)	12.00
CLOTHING:		
	CAPS	15.00
	TEE SHIRTS	16.00
	2X TEE SHIRT	38.00
	POLO SHIRT	27.00
	2 X POLO SHIRT	29.00
MISCELLANEOUS:		
	3" Lambswool Buff	9.00