

AS THE WOOD TURNS

June 2000

Meeting Minutes

The May meeting was called to order at 7:20 at Janet Collins shop

President's Report

Steve Sarro won a 1st place at *North River Art Society* show. **Roger Hill** received an Honorable Mention.

Treasury currently at \$1,150.97.

Other Business

LIVOS naturals organic coatings literature was distributed. Made in Germany, sold at Woodcraft, Woburn.

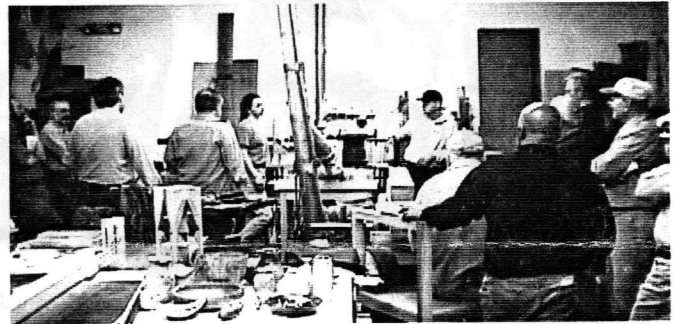
Wally Kemp's handout illustrated relationship of bowl forms to log - very helpful. **Janet** showed a book from 1985 - *The Art of Turned Wood Bowls*.

Mal reviewed the status of our AAW Chapter Collaborative Challenge 2000. The project was on display and is complete except for base. (Editors note: See special edition of newsletter for details of our project)

Janet's interesting demo related to her tall post bed under construction and how she made a large indexing fixture for cutting reeds and flutes on her large lathe. (formally owned by **Jesse Meyer**) A jig with a small router which slides along the lathe bed was used by **Janet** and members to cut flutes on a sample post.

A wood raffle was held prior to adjourning.

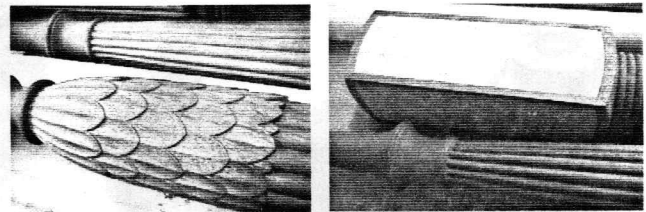
May Meeting at Janet's Shop



Members at attention as Janet demonstrates



Roger concentrates as Janet cuts flute



Details of carvings, reeds, flutes and inlay on Janet's mahogany Sheraton Style Tall Post Bed under construction. The posts were turned at North Bennet Street School on their Oliver lathe. Janet is Director of Workshops and an instructor at the school.

2000 MSSW Officers

President - Hank Cahill (781) 878-0234
Vice President - Felix Troiano (781) 749-1713
Treasurer - Wally Kemp (781) 871-1390
Secretary - Mal Partridge (781) 843-3883
Librarian - John Murphy (781) 834-1179
Newsletter - Mal Partridge (781) 843-3883



Next Meeting

Tuesday, June 27th, 2000
7:00 P.M.

At Hank Cahill's *Dust Bowl*
Refreshments by: Ray Cartier
Member Challenge: Kitchen scoop
Demonstration: TBD

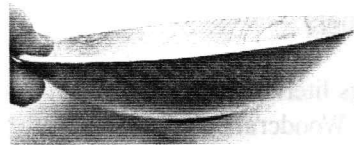
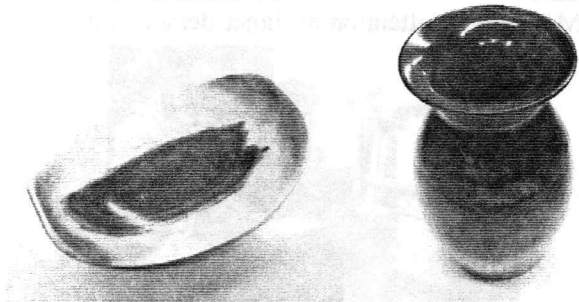
April 2000 Show & Tell



Jeff's pull

Jeffrey Keller with pool cue - cocobolo & maple from Rockler kit

Janet's walnut candy bowl

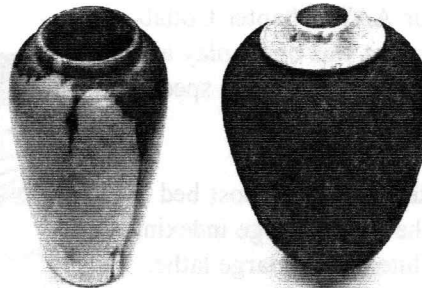
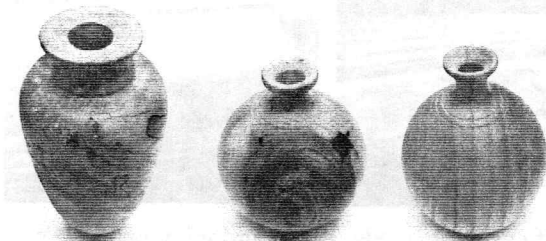


Emilio's ash bowl with blue bottom - used liming wax to fill grain



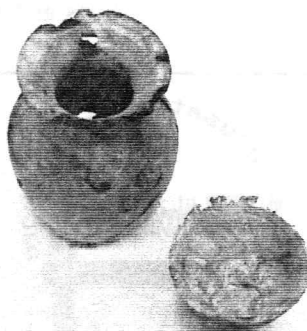
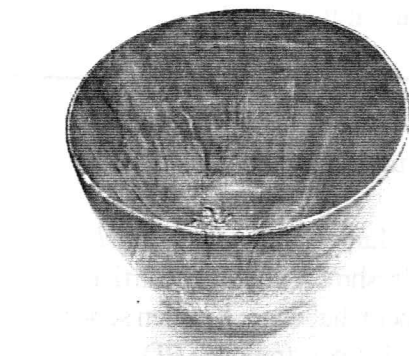
Emilio's maple bowl

Felix Troiano turned catalpa bowl wet - urethane finish on vase

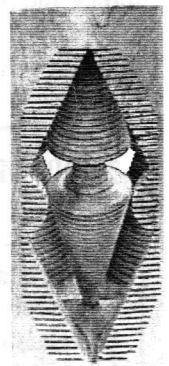
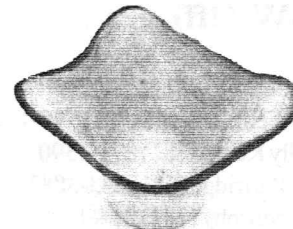


Janet Collins quilted curly maple plate - wood from NH Symposium

Richard Friberg's spalted maple & ash weed pots - bird's eye maple top, used Dremel tool to create feathers, painted black



Wally's light pull



Paul Marks turned maple burl green - tung oil & Butchers wax finish

Wally Kemp's "mistake" Micromesh finish - like wax
Wally continues to experiment with his new parting tool to make ornaments