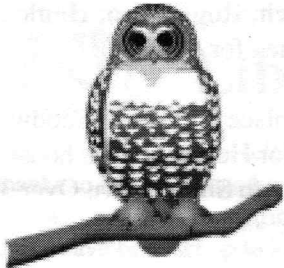
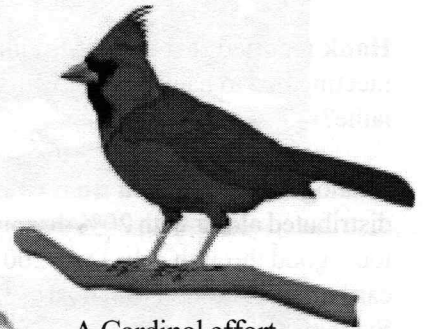

AS THE WOOD TURNERS

June 2001

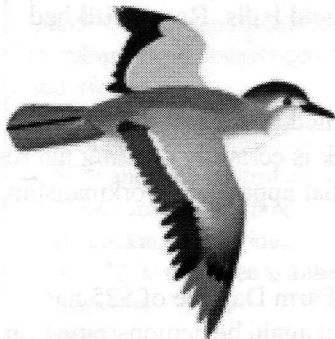
Some Turnings Are For The Birds



I don't give a Hoot!



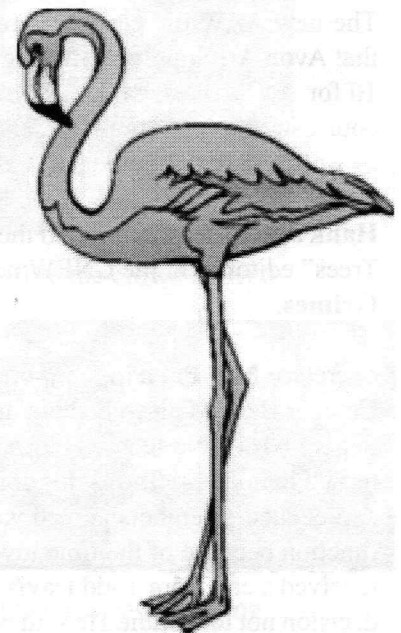
A Cardinal effort



This is great, but where's the landing strip?



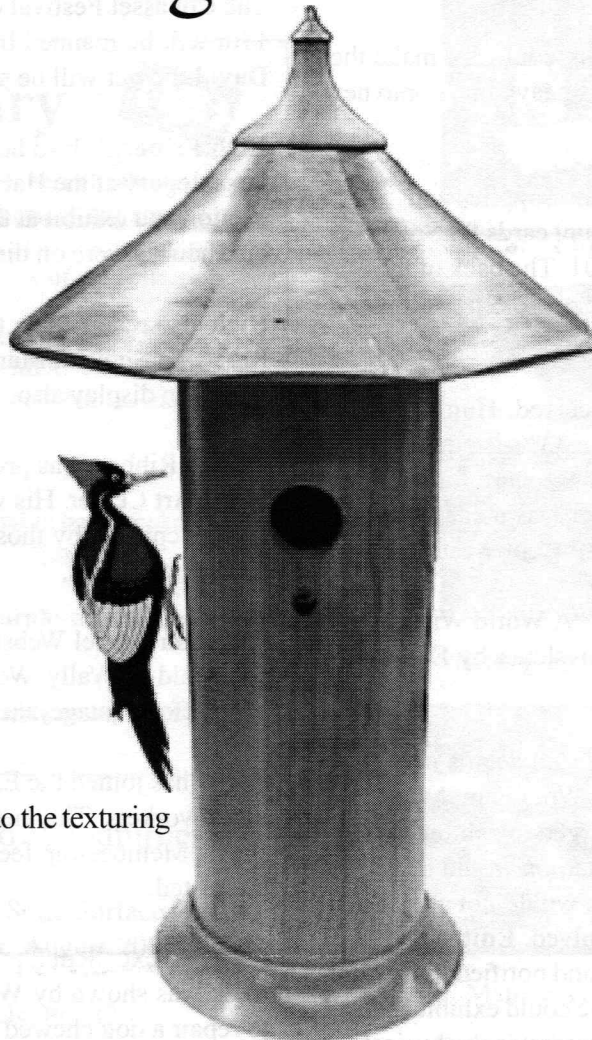
I'll do the texturing



Just my size, but I make a better lawn ornament



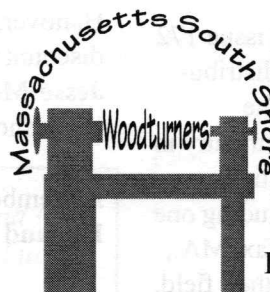
Something to Crow about!



Roger Hill's latest bird house under construction
Turned from cherry and mahogany

2001 MSSW Officers

President - Hank Cahill (781) 878-0234
Vice President - Felix Troiano (781) 749-1713
Treasurer - Wally Kemp (781) 871-1390
Secretary - Mal Partridge (781) 843-3883
Librarian - John Murphy (781) 834-1179
Newsletter - Mal Partridge (781) 843-3883



Next Meeting

Tuesday, June 26, 2001, 7:00 P.M.
At Hank Cahill's *Dust Bowl*
Refreshments by: Leonard Manderville
Member Challenge: Turned Bowl from dry wood and unsanded (tool finish only)
Demo: Rich Friberg - Texturing w/Sorby tool

Meeting Minutes

The meeting was called to order at 7:15 pm at Hank Cahill's Dust Bowl

President's Report & General Business

Two visitors were introduced; Jay Creedon and Cliff Colley.

Hank reported that **John Murphy** could not make the meeting due to back pain. (Lifting heavy burls onto new lathe?)

Catalogs were received from Craft Supplies and distributed along with 20% discount cards for Sorby tools good through July 15th, 2001. The back of the card shows the new **Sorby RS2000 Deep Hollowing System** components.

The new AAW directory was received. **Hank** reported that Avon Art Supply is offering a 33% discount June 9-10 for Air brushes, paints, etc. A brochure for summer courses at South Shore Art Center was made available as well as a Brookfield (CT) Craft Center catalog.

Hank also called attention to the "A World Without Trees" editorial in the CNEW newsletter by **Ernie Grimes**.

Secretary **Mal Partridge** reported on details of the Cracker Barrel Fair to be held at Wrentham, MA on Sept. 13-16th. No fee will be charged to exhibit or sell turned items but a % of sales donation would be appreciated. Members agreed we would not attend this function because of the time involved. **Editors note:** I received a call from Todd Davis and notified him of our decision not to exhibit. He said we could exhibit and sell for 1 or 2 days if we wanted. Saturday is the busiest day and is open from 8 am to 10 pm, Sunday from 8 am to 8 pm.

Pictures of our Gnome Rotary Engine were in issue 172 of WW1 Aero, a magazine with International distribution. Also in the Models section a mention of the MSSW special edition newsletter describing our entry in the AAW 2000 Symposium Chapter Collaborative Challenge. Many calls have been received including one from a Radio Controlled Airplane club in Halifax, MA., the Wingbusters, inviting our members to visit their field.

A packet of information was received by **Mal** from the College Park Aviation Museum. A "Care package" of information about our group and how we built the 50HP Gnome rotary engine was sent. MSSW is getting a great deal of publicity and recognition for it's efforts in fabricating this project.

Treasurer **Wally Kemp** reported \$947 in the treasury.

The Cohasset Festival on the Common June 15, 16 & 17th will be manned by **Rich, Roger, Leo, Hank** and **David**. Power will be supplied for our lathe.

Rich Friberg's bird house place 2nd in the woodworking category at the Habitat for Humanity bird house auction and exhibit at the South Shore Plaza. Over 350 bird houses were on display.

Rich also received an Honorable Mention at the North River Art Show at Marshfield Hills. **Roger Hill** had pieces on display also.

A Blue Ribbon was presented to **Rich** at the South Shore Art Center. His work is certainly creating interest and acceptance by those that appreciate workmanship and artistic talent.

Audubon Daniel Webster Farm Day fee of \$25 has been paid by Wally. We will again be demonstrating on the platform (stage) this fall.

Wally has joined the Eastern Massachusetts Guild of Woodworkers. The meetings are held at members shops. Membership fee is \$40. Check with **Wally** if interested.

CIBA an excellent 2 part Epoxy used in restoration work was shown by **Wally**. **Janet Collins** has used it to repair a dog chewed chair rail. It is available from Industrial Supply in Tewksbury.

Leo Manderville mentioned a source of hardwoods in Hanover. **Ernie** said that Kingspor offers a 10% discount to members if a membership list is supplied. **Jesse Meyer's** bandsaw was on the cover of Woodshop News!

A member turning and wood raffle was held. **Tom Holland** won **John Murphy's** nice piece.

Notice to Woodturners

Paul Marks can offer an opportunity for a limited number of turners to exhibit their work in a craft and gift gallery in Dennis, MA. The work would be sold on consignment. The pieces should be moderately priced gift items and other small works. Contact Paul directly by e-mail PMarks1694@aol.com or phone at 617-731-9114.



Library



The Library has a good selection of periodicals and books thanks to the donations by members. A self service system will be used for distribution. The following procedures have been set up to keep track of the collection.

The Librarian has been authorized to spend \$25.00 per month for additions to the library. Members are requested to submit their suggestions for new books, magazines and videos.

Check Out

1. Sign and date control card found in book pocket
2. Place card in index box
3. If checking out a video:
Give \$2.00 rental fee to **John Murphy** or place money in index box

Return

1. Find control card in index box and cross off name
2. Replace card in book pocket

Articles of Interest to Woodturners

Turning a Corian or other Solid Surface Pen
Creative Woodworks & Crafts, August 2001, Pg. 30

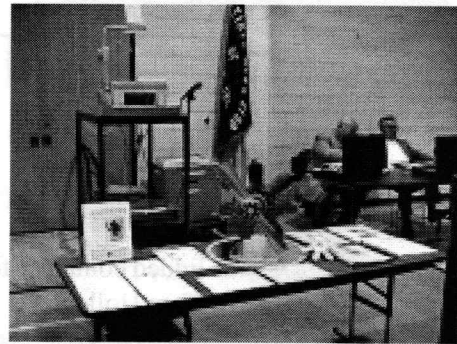
The French Vessels, Pg. 32
Wire Inlay in Turnings, Pg. 62
A Conductors Baton, Pg. 74
All in *Woodwork*, August 2001

Pure & Simple by Al Stirt, Pg 31
(Remember his demo?)
Woodturner, June 2001

Our deepest sympathy goes to Hank and his family for the loss of his beloved wife Lucy.

Our 50HP Gnome Rotary Engine

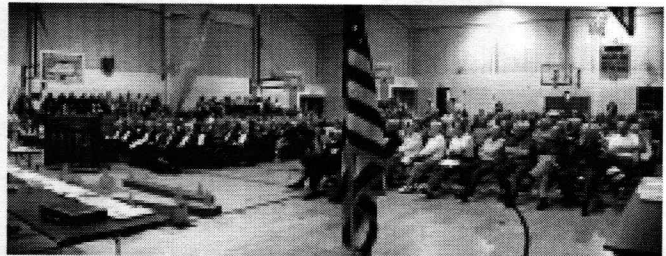
Mal's Presentation to 300 members of the
Retired Men's Club of Greendale
Worcester, MA - May 30, 2001



Membership forms for MSSW and CNEW at the ready



Setting up before the crowd arrived



Members at beginning of meeting



Members Choral group
(Should we sing the Ode to Burls before each meeting?)

Show & Tell

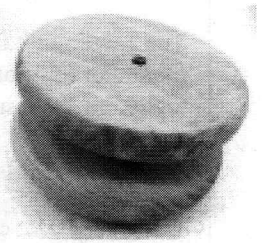
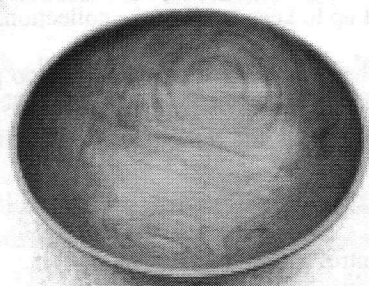
May 2001



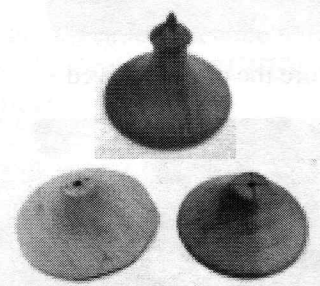
John Murphy made this lidded container for the raffle. Won by Tom Holland



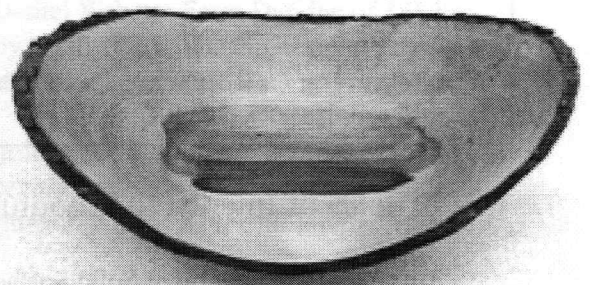
Rich Friberg's hemlock burl shell and textured vase



Cherry bowl and hose pulley by Tom Holland



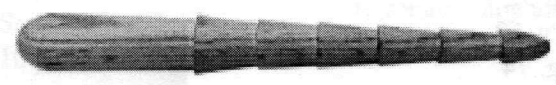
Bird house summit variations by Roger Hill



Wally Kemp's end grain spalted maple bowl and large oval apple bowl



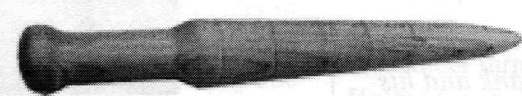
Jeff Keller's russian olive cup



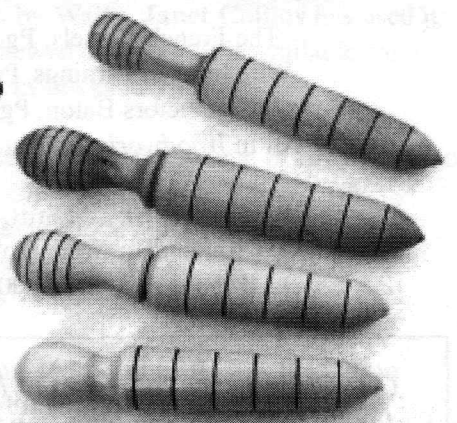
Paul Mark's dibber



Jeff's dibber



David Hutchin's dibber



Jesse Meyer made 4 maple dibbers with four different finishes

Member Challenge Dibbers