

---

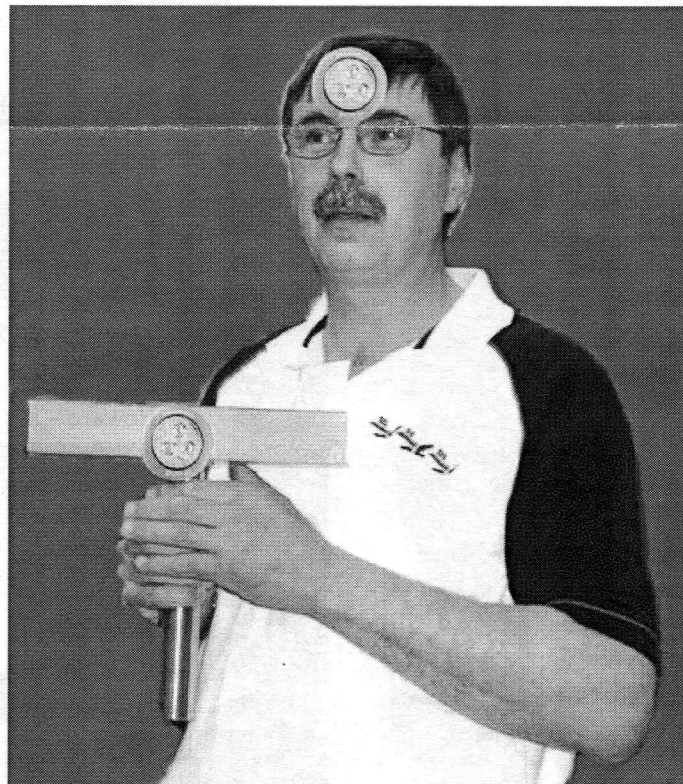
# AS THE WOOD TURNS

---

June 2006

---

## The Light Side of Turning



Nigel Howe saw the light, and purchased it at Linens 'n Things, a Sylvania Dot-it Bright White LED Light which has a reusable unique 3M adhesive back. He mounted it on a tool rest to shine into turnings. As you can see he got carried away!

Safety Note: Sylvania does not recommend fastening Dot-it's to skin.

### 2006 MSSW Officers

**President** - Hank Cahill (781) 878-0234  
**Vice President** - Richard Friberg (508) 378-2436  
**Treasurer** - Wally Kemp (781) 871-1390  
**Secretary** - Mal Partridge (781) 843-3883  
**Librarian** - Leonard Mandeville (508-586-7679)  
**Newsletter** - Mal Partridge (781) 843-3883  
**Web site:** <http://www.mssw.sitelinker.org/>



### Next Meeting

Tuesday, June 27, 2006, 7:00 P.M.  
At Hank Cahill's *Dust Bowl*  
Refreshments by: Mike Veno  
Member Challenge: Lidded Bowl or  
Napkin Ring set  
Demonstration: TBD

## Meeting Minutes

The meeting was called to order at 7:00 pm at Hank Cahill's Dust Bowl  
President's Report and General Business

Guests present were Ian Manley from Acushnet and William Dooley from Hanover who have become members.

The meeting was conducted by V.P. Richard Friberg as Hank was in Hospital.

Ken reported that the South Shore Art Festival would be held June 15, 16, and 17. We will have demo and selling booths. Setup Friday 8am show starts at 2pm. Members needed for setup and booth duty. A \$15 fee from each member's sales will go towards booth costs.

Wally reported \$1788 in treasury. The Jet motor is still out of service. A gallon of Anchor Seal for \$11 was available.

Richard Friberg has been teaching Historic Timber Framing at North Bennet Street School.

Hand's On workshop at Nigel's Shop will be held at 10am on Saturday the 24th of June. All are welcome.

Andy Osborne reviewed progress on the 2007 New England Woodturning Symposium. Volunteers are needed. Ken will write Grant applications for \$1000 for each club participating. A new AAW Chapter will be set up for New England Symposium. Site selection that will meet our needs is ongoing.

All of the Liberty Wood is now at Hank's shop for members to use. Hank would appreciate reducing the large pile as soon as possible!

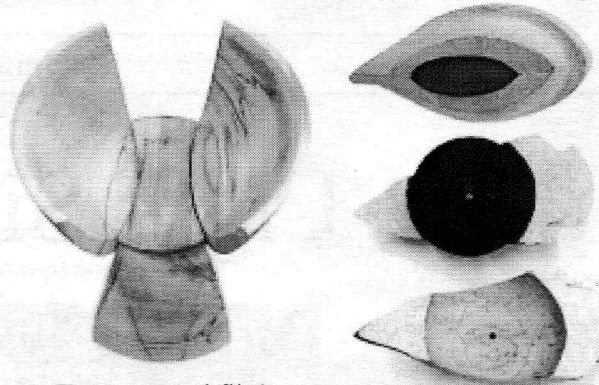
Peter Teubel offered a truckfull of dry Walnut for the wood swap. He also had boxes of 100 pairs of industrial gloves for sale at \$6.00/box.

Charlie Rosen will be redoing our web site and would like members to contribute writeups on woodturning events they participate in and other articles of interest.

**June Member Challenge** Lidded Bowl, see example: <http://bobhamswwing.homestead.com/liddedbowl.html>  
Alternate: A set of napkin rings: Reference Woodwork Magazine, August 2006, "A Set of Napkin Rings".

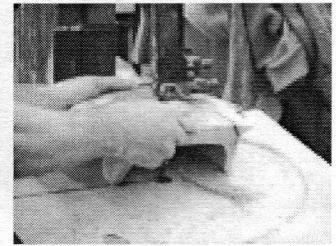
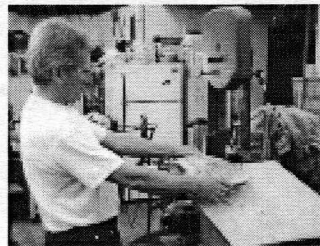
## Michael Brolly Demonstration

Michael used his creative talents to create unusual pieces from turnings supplied by members at a meeting on Saturday June 20th at Hank's shop.

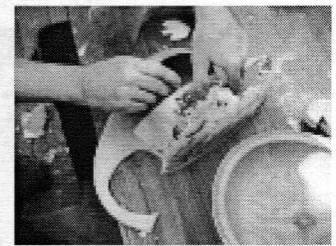
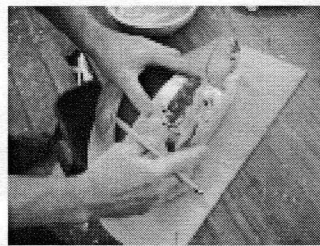


Two cuts and flip!

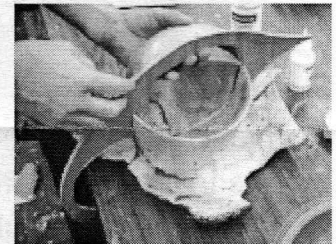
Brolly eye construction.



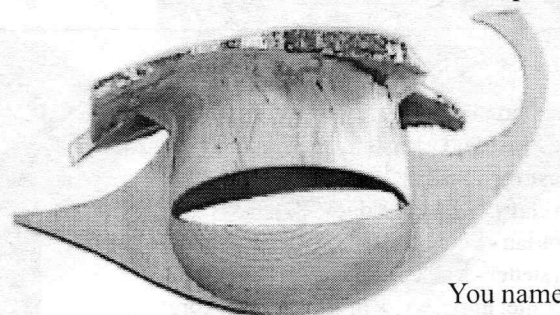
Beware - it's Hank's bandsaw!



The cut turning is used as template to shape plywood.



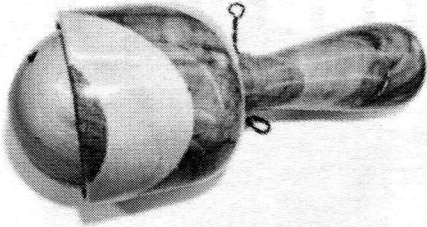
Second bowl is cut in half and assembled to piece.



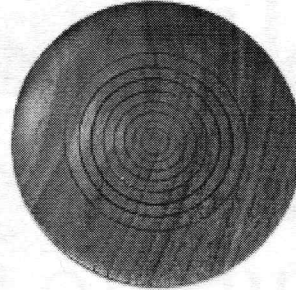
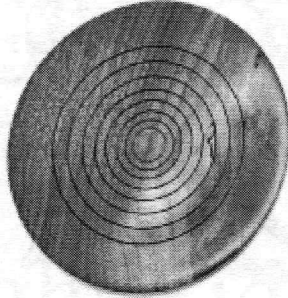
You name it!

Michael kept us abreast of his artistic creations.

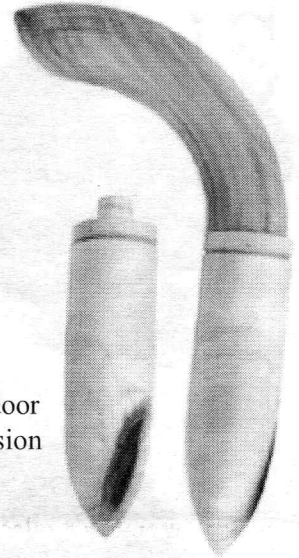
# More Show & Tell



Jeff's ball & cup toss toy



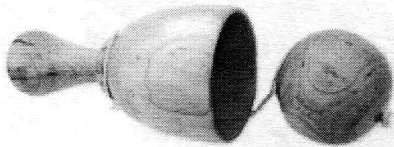
Andy Osborne's thin walnut plates



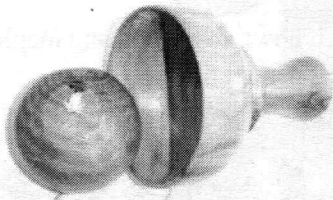
Emilio's round door stop and conversion to a dibble



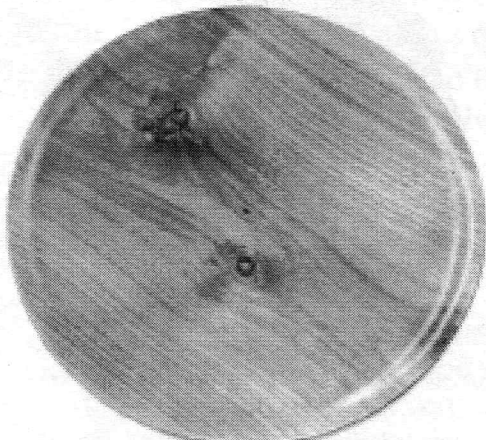
Janet Collin's mahogany ball & cup member challenge



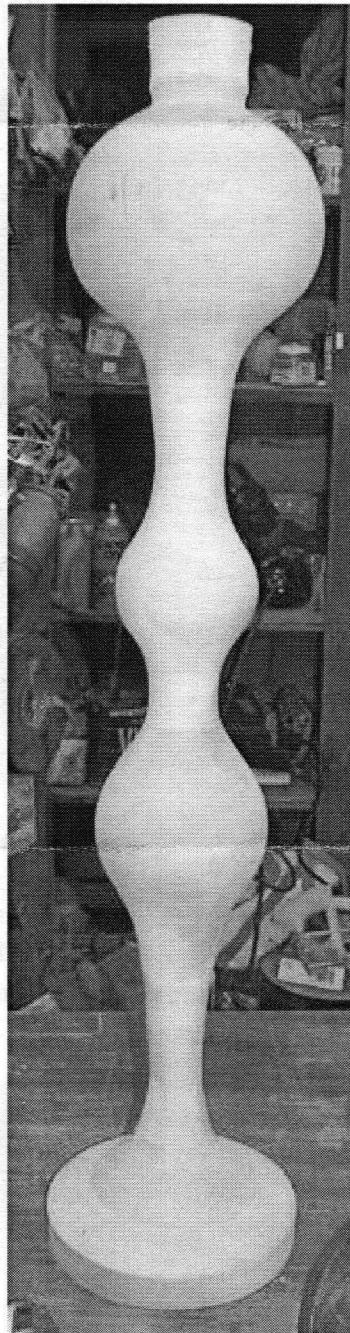
Ed Morey's maple ball & cup



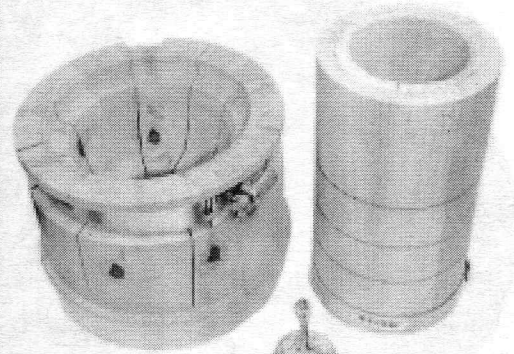
Jim Weidenfeller's walnut and sassafras ball & cup toss toys



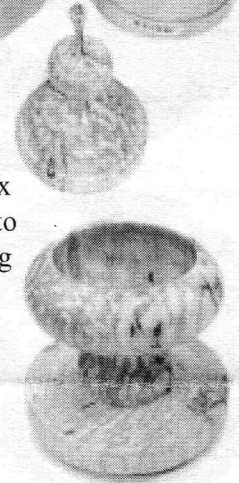
Paul O'Neill's plate



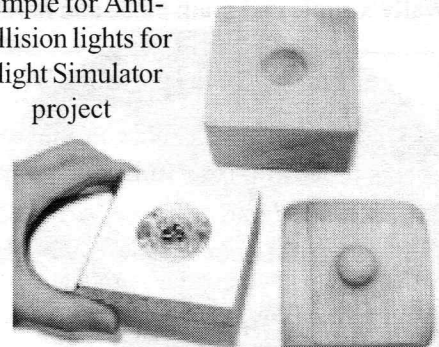
One of 4 commission pieces by Ken Lindgren



Sidney's finial box and chucks used to hold while turning

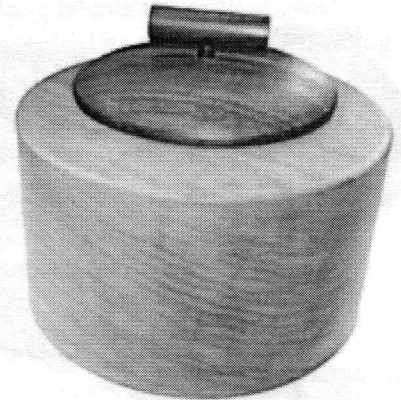
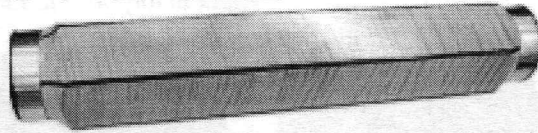
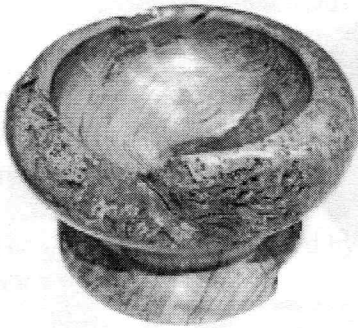


Don Diedrich's forms used to create acrylic dimple for Anti-collision lights for Flight Simulator project



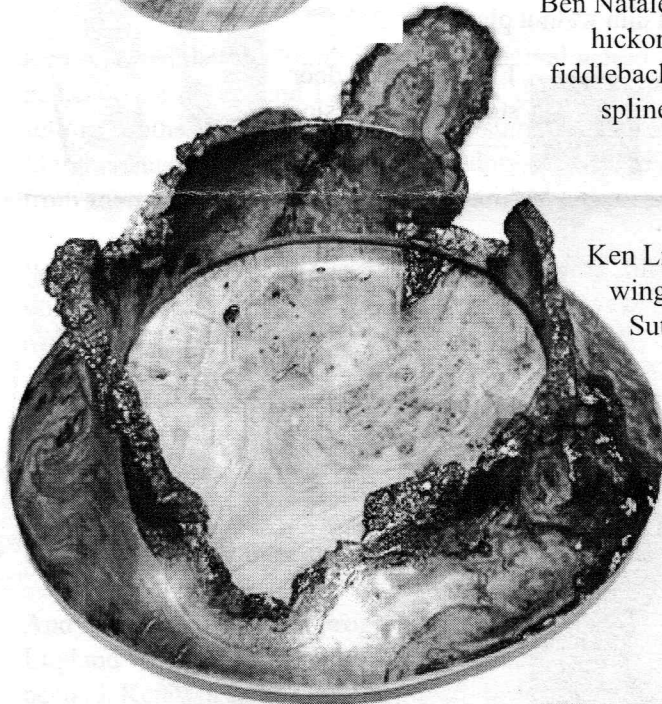
# Show & Tell

May 2006



Ben Natale's cherry burl bowl,  
hickory doorstops and  
fiddleback maple with cherry  
splines kaleidoscope

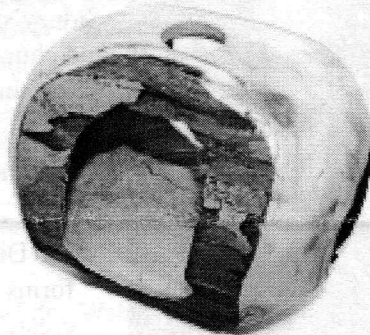
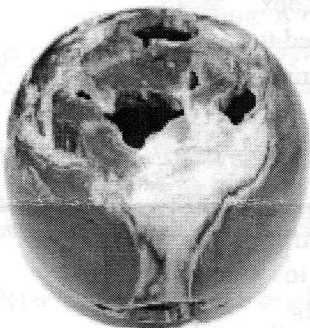
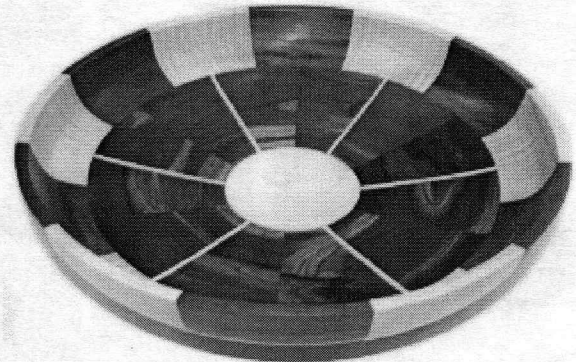
Bob Sutter's cherry and rosewood box



Ken Lindgren's cherry burl  
winged piece from Bob  
Sutter's wood swap



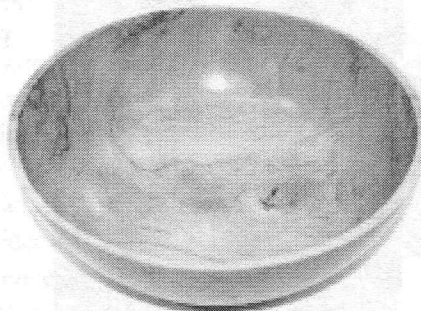
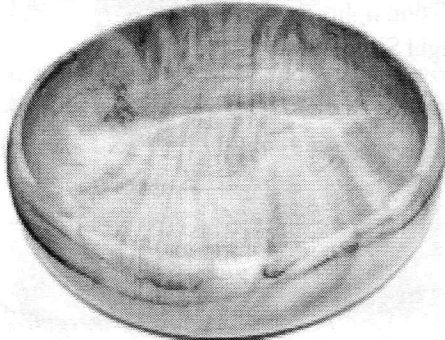
Nigel's oak crotch bowl, rosewood and maple  
segmented plate



Wally's apple end grain piece and hollow Liberty Tree wood turning



Harold Dyke's black walnut, ebony and  
maple piece with pewter inlays for  
Grandson's Air Force Academy graduation



Jeff Keller's sycamore and cherry bowls